

COAL OWNED BY _____

NEW LOCATION...

DRILL DEEPER...

ABANDONMENT...

SEP 7 1953

COMPANY The Manufacturer Light & Heat Co

ADDRESS 800 Union Trust Bldg. Pgh. Pa.

FARM Ralph Montgomery

TRACT 1 ACRES 40 LEASE NO. 18538

WELL (FARM) No. 1 SERIAL No. 3576

ELEVATION (SPIRIT-LEVEL) 1344

QUADRANGLE Littleton

COUNTY Wetzel DISTRICT Proctor

ENGINEER John A. Loudon

ENGINEER'S REGISTRATION No. 12710

FILE No. _____ DRAWING No. Y-13-883

DATE 19 Aug. 53 SCALE 1" = 800'

STATE OF WEST VIRGINIA
DEPARTMENT OF MINES
OIL AND GAS DIVISION
CHARLESTON

WELL LOCATION MAP

This was NOT Wet-994-A
103-00994A (30994)

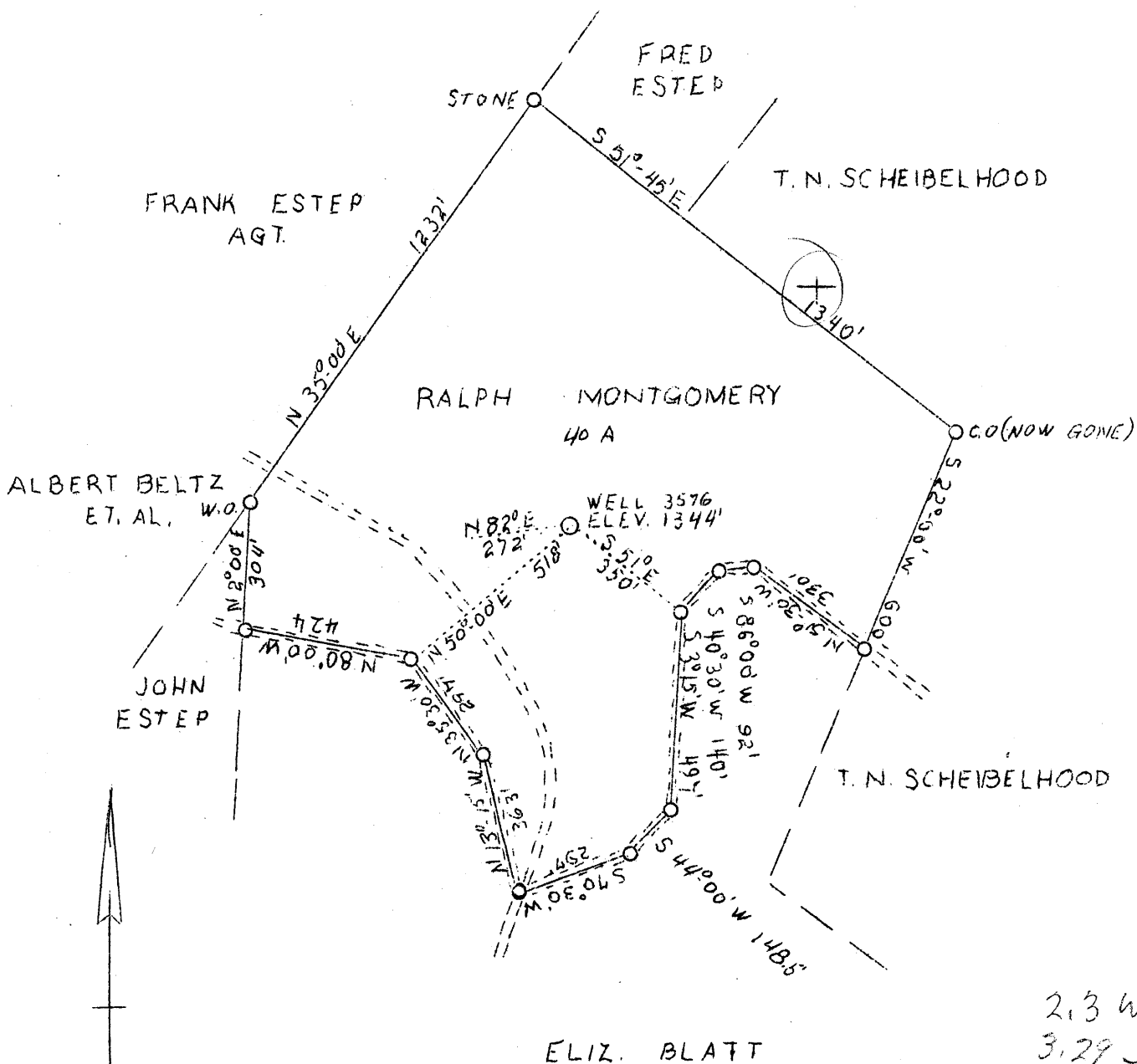
Now 201

+ DENOTES LOCATION OF WELL ON UNITED STATES TOPOGRAPHIC MAPS, SCALE 1 TO 62,500. LATITUDE AND LONGITUDE LINES BEING REPRESENTED BY BORDER LINES AS SHOWN.

- DENOTES ONE INCH SPACES ON BORDER LINE OF ORIGINAL TRACING.

LATITUDE 39° 45'

LONGITUDE 80° 41'



2.3 W
3.29 J

Company Address The Mfg. Light & Heat Co.
800 Union Trust Bldg.,
Pittsburgh, Pa.

Farm Tract Ralph Montgomery
1

Acres 40

Lease No. 18538

Well (Farm) No. One

Serial No. 3576

Elevation (SP) 1344'

Quadrangle Littleton N.W. 1/4

County Wetzel

District Proctor

Engineer A. J. Russell

Eng. Reg. No. -

Drawing No. Y-8-79

Date 9-27-38 - Scale 1" = 400'

STATE OF WEST VIRGINIA
Department of Mines
OIL & GAS DIVISION
Charleston

WELL LOCATION MAP

File No. Wet-201

x Denotes location of well on U. S. Topographic Maps, scale 1 to 62,500, latitude and longitude lines being represented by border lines as shown.

- Denotes one inch spaces on border line of original tracing.

WEST VIRGINIA DEPARTMENT OF MINES
OIL & GAS DIVISION
W E L L R E C O R D

Permit No. Wet 201-D
Littleton Quad.

Gas Well
CASING & TUBING

Company	The Manufacturers Light & Heat Co.
Address	800 Union Trust Bldg., Pittsburgh, Pa.
Farm	Ralph Montgomery Acres 40 8 1/2 3'7
Location	-- 6 5/8 133'7
Well No	1-3576 Elev. 1344'
District	Proctor Wetzol County
Surface	Ralph Montgomery, R.D.#1, Proctor, W.Va.
Mineral	The Mfrs. Light & Heat Co. 800 Union Trust Bldg., Pittsburgh, Pa.
Commenced	8-30-43
Completed	10-1-43
Open flow	16/10ths W in 1 1/2"
Volume	70,558 C.F.
Rock Pressure	600 lbs. 19 hrs.

DRILLED DEEPER

✓ Sand Salt	2198	2204	
Slate & Lime	2204	2250	
✓ Big Lime	2250	2307	
✓ Big Injun Sand	2307	2582	
Slate & Lime	2582	2660	
Lime Shells	2660	2680	
Slate & Lime	2680	2865	
Slate	2865	2915	
Slate & Lime	2915	3000	
Red Rock	3000	3072	
Slate	3072	3118	
✓ 50' Sand	3118	3140	Gas at 3125'
Slate	3140	3166	
✓ Gordon Sand	3166	3186	
Slate	3186	3218	
Slate & Lime	3218	3244	
Slate	3244	3273	
✓ 5th Sand	3273	3283	
Slate & Lime	3283	3300	
TOTAL DEPTH		3300	

3300
8612
1102

WEST VIRGINIA DEPARTMENT OF MINES

OIL & GAS DIVISION

WELL RECORD

Permit No. Wet-201

Gas Well

Littleton Quad.

CASING & TUBING

Company	The Manufacturers Light & Heat	13 Cond.	16	16
Address	800 Union Tr. Bldg., Pgh. Pa.	10	465-9	465-9
Farm	Ralph Montgomery ACRES 40	8-1/4	1617-8	1617-8
Well No.	3576 ELEV. 1344	6-5/8	2169-4	2169-4
District	Proctor, Wetzel County			
Surface	Ralph Montgomery, Proctor, W. Va.	No Packer		
Mineral	Mfg. Light & Heat Co., Pgh. Pa.			
Drilling commenced	Nov. 11, 1938	Not Cemented		
Drilling completed	Jan. 18, 1939			
Date shot	Not shot	COAL ENCOUNTERED:		
Open Flow	24/10ths Merc. in 6-5/8"	270'	12"	
Volume	9,200,000 c.f.	780'	12"	
Rock Pressure	250 lbs. 48 hrs.	1065'	36"	
Fresh Water	140 - 5 blrs. per hr.	1162'	48"	
Salt Water	1900 6 blrs. per hr.			

FORMATION COLOR ^{HAY} TOP BASE RESULT					FORMATION COLOR ^{HAY} TOP BASE RESULT					
Red Clay	red	s	0	12	Shale	black	s	1265	1280	
Shale	gray		12	100	✓Murphy Sand		m	1280	1325	
Red Rock	red	s	100	114	Slate	white	s	1325	1328	
Slate&Shells	wh.		114	160	Red Rock	red	s	1328	1350	
Slate	wh.		170	180	Slate&Shells		h-s	1350	1420	
Red Rock	red		180	190	Red Rock	red	s	1420	1430	
Lime	wh.	h	190	195	Slate&Shell		m	1430	1465	
Red Rock & Shells			195	270	✓Little Dunkard					
✓Coal	blk.	s	270	271		lgt. Solid		1465	1570	Little Gas 1539
Lime	wh.	m	271	300						
Blue Mud	blue	s	300	320	Slate	dark	s	1570	1593	
Red Mud	red	s	320	350	Slate&Shells	wh.	sol	1592	1600	
Sandy Lime	wh.	h	350	365	Sand	wh.	"	1600	1605	
Red Rock	red	s	365	379	Slate	wh.	s	1605	1620	
Gritty Lime	wh.	m	379	392	Red Rock	red	s	1620	1635	
Red Rock	red	s	392	397	Slate	lgt.	s	1635	1670	
Lime	wh.		397	400	Shells	lgt.	h	1670	1715	
Red mud	red	s	400	443	Slate&Shells	wh.	sol	1715	1735	
Slate	wh.		443	460	solid	Gas Sand	wh.	m	1735	1838
Red rock	red	s	460	490	solid	Slate	dark	s	1838	1867
Slate&Shells	wh.	h	490	535	✓Salt Sand	wh.	h	1867	1940	
Red Rock	red	s	435?	550	Slate			1940	1955	
Slate&Shells	wh.	h	550	600	Sandy Lime	wh.	h	1955	1970	
Red Rock	red	s	600	615	Slate	dark	s	1970	2020	
Slate&Shells	wh.	h	615	645	Slate&Shell	wh.		2020	2050	Solid
Red Rock	red	s	645	665	✓Salt Sand	wh.		2050	2085	Solid
Slate&Shells	wh.	h	665	685	Slate	dark	s	2085	2140	
Red Rock	red	s	685	695	Lime	black	h	2140	2150	
Slate	wh.	h	695	710	✓Maxon Sand			2147		
Slate	blk.	s	710	725	Salt					
Slate&Shells	wh.	h	725	780	Gas 2178 - Test	24/10 Merc.				in 6-5/8" opg.
✓Coal	blk.	s	780	781						
Slate&Shells	wh.	m	781	835						
Slate	drk.	s	835	870	TOTAL DEPTH				2198	
Slate&Shells	wh.		870	900						
Sand	wh.	s	900	920	solid					
Lime	wh.	h	920	980						
Red Rock	red	s	980	995						
Lime	wh.	h	995	1065						
✓Mapletown										
Coal	blk	s	1065	1068						
Lime	h		1068	1162						
✓Pitts. Coal	blk	s	1162	1166	Sh. water					
Slate&Shells	m		1166	1185						
Slate	wh.	s	1185	1205						
Red Rock	red	s	1205	1215						
Slate	wh.	h	1215	1240						
Sand	wh.	s	1240	1265						