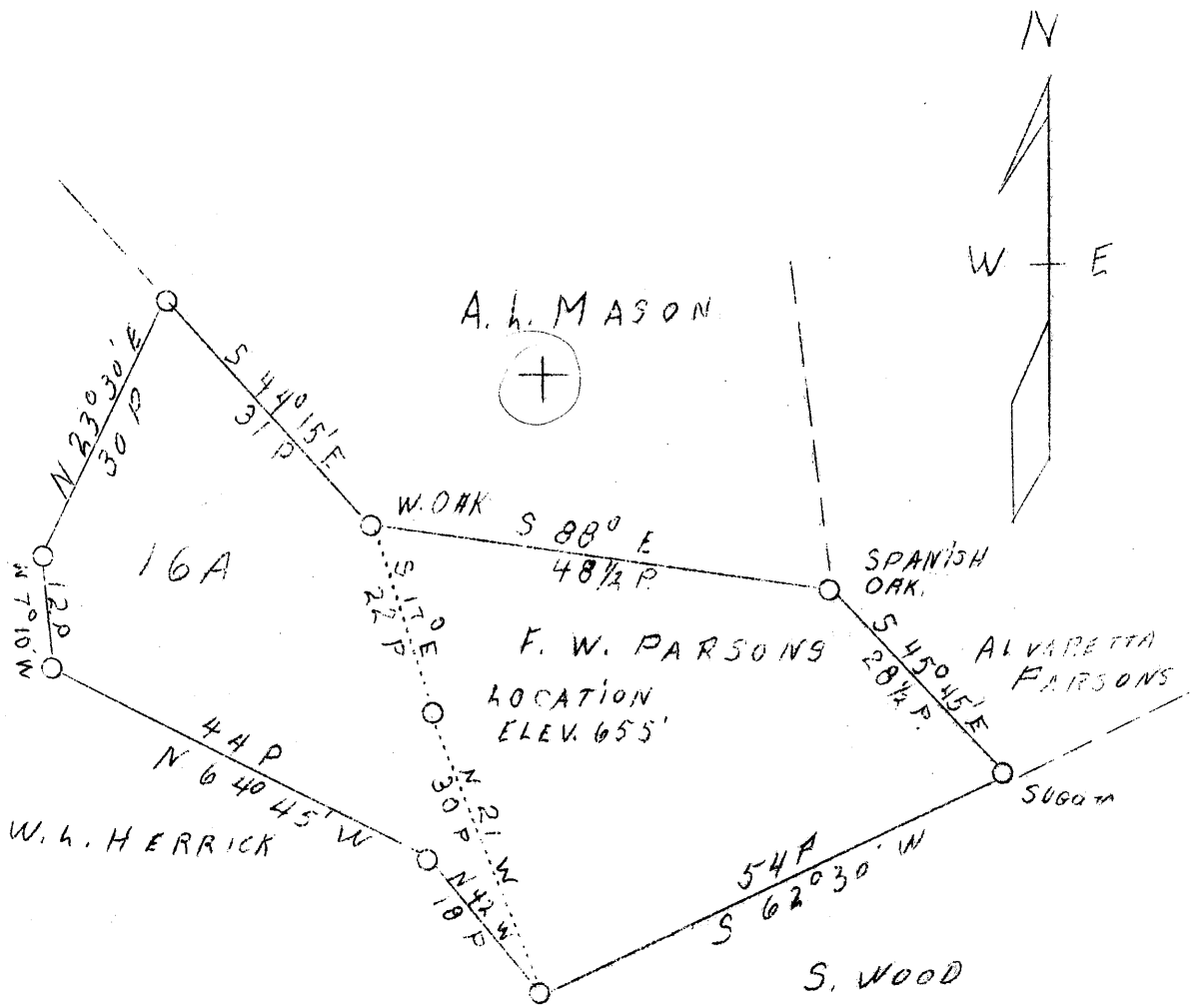


LATITUDE 39° 45'

LONGITUDE 80° 45'



3.79 W  
2.88 S

well location

Company	George P. Wasmuth	STATE OF WEST VIRGINIA Department of Mines OIL & GAS DIVISION Charleston  WELL LOCATION MAP File No. <u>Wet-706</u>  x Denotes location of well on U. S. Topographic Maps, scale 1 to 62,500, latitude and longitude lines being represented by border lines as shown.  - Denotes one inch spaces on border line of original tracing.
Address	Glendale, W. Va.	
Farm	F. W. Parsons	
Tract	#1	
Acres	16	
Well (Farm) No.	One	
Elevation (SP)	655	
Quadrangle	New Martinsville <i>NW</i>	
County	Wetzel	
District	Proctor	
Engineer	F. W. Parsons	
Eng. Reg. No.	203	
File No.	W.	
Date	Oct. 20, 1938	
Scale	1" - 20 poles	

Latitude

.135  
1.43w

Longitude

Topo Location

7.5' Loc. \_\_\_\_\_ 15' Loc. \_\_\_\_\_  
(calc.) \_\_\_\_\_

Company George P Wabornuth

Farm FW Parsons #1

15' Quad \_\_\_\_\_  
(sec.)

7.5' Quad New Martinsville

District Proctor

WELL LOCATION PLAT

County 103 Permit 206

WEST VIRGINIA DEPARTMENT OF MINES

OIL & GAS DIVISION

WELL RECORD

Permit No. Wet-206

Gas Well

New Martinsville Quad.

CASING & TUBING

Company	Geo. P. Wasmuth	10	22	
Address	Glendale, W. Va.	6-5/8	235	235
Farm	F. W. Parsons ACRES 20	5-3/16	493	493
Location	Proctor Creek	2	581	581
Well No.	One - ELEV. 655			
District	Proctor - Wetzel County			
Surface & Mineral	F. W. Parsons, Proctor, W. Va.			
Drilling commenced	Oct. 26, 1938			
Drilling completed	Nov. 9, 1938			
Open Flow	40/10ths Merc. in 2 inch			
Volume	1,000,000 c.f.			
Rock Pressure	127 lbs. 6 hrs.			

Packer:  
 Gas Packer  
 Size - 5-3/16x2x16  
 Depth Set - 565  
 Perf. Top - 577  
 " bot. - 577 1/2  
 6" cage used

COAL ENCOUNTERED:  
 165' 18"  
 250' 12"

Formation Color <sup>Har</sup> 5 TOP Base Result Formation Color <sup>Har</sup> 5 TOP Base Result

Formation	Color	<sup>Har</sup> 5	TOP	Base	Result	Formation	Color	<sup>Har</sup> 5	TOP	Base	Result
Clay			0	15							
Gravel			15	20							
Lime Stone			20	50							
Slate & Shells			50	105							
Lime			105	160							
Slate			160	165							
Maple Coal Blossom			165	166 1/2							
Lime			166 1/2	180							
Slate			180	235							
Lime			235	250							
Pittsburgh Coal Blossom			250	251							
Lime & Shells			251	270							
Sand			270	290							
Lime			290	310							
Slate			310	350							
Red Rock			350	360							
Slate			360	380							
Red Rock			380	420							
Lime			420	440							
Red Rock			440	455							
Slate			455	480							
Lime			480	482							
Slate			482	492							
Sand Horse Neck?			492	529	Gas 495-502	100 M					
Slate			529	535							
Lime			535	570							
Sand Cow Run			570	581	Gas 571-581	900 M					
Total Depth				581 1/2							