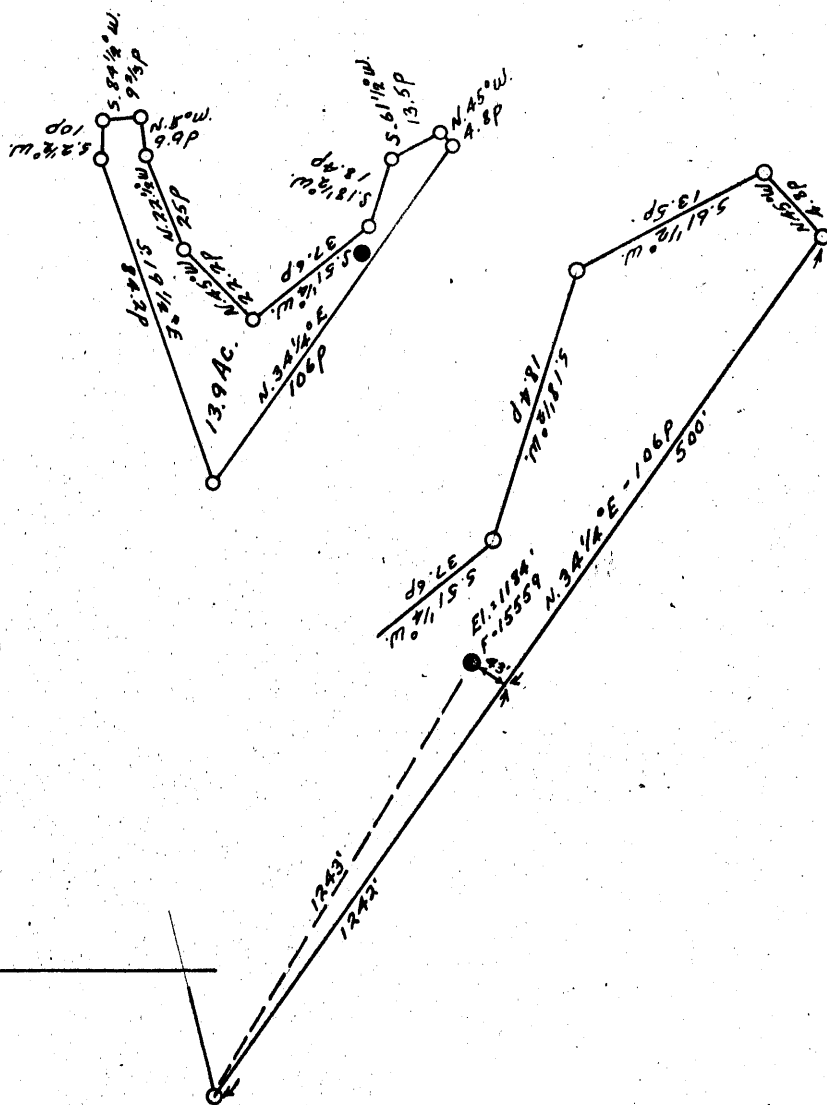


LATITUDE 39 ° 45

LONGITUDE 80 ° 40

2.65 S
2.42 W



COAL OWNED BY _____
Reopened

NEW LOCATION.....

DRILL DEEPER.....

ABANDONMENT.....

COMPANY The Manufacturers Light & Heat Co.

ADDRESS 800 Union Trust Bldg. Pgh. Pa.

FARM J. D. Montgomery

TRACT 1 ACRES 13.9 LEASE NO. 26599

WELL (FARM) NO. 1 SERIAL NO. F-15559

ELEVATION (SPIRIT LEVEL) 1184'

QUADRANGLE Littleton NW

COUNTY Wetzel DISTRICT Procter

ENGINEER Thomas E. Virgin J.M.

ENGINEER'S REGISTRATION NO. 1503

FILE NO. _____ DRAWING NO. Y-13-897

DATE 28 Aug. 53 SCALE 1" = 800'

STATE OF WEST VIRGINIA
DEPARTMENT OF MINES
OIL AND GAS DIVISION
CHARLESTON

WELL LOCATION MAP

FILE NO. Wet-212-Redrill

+ DENOTES LOCATION OF WELL ON UNITED STATES TOPOGRAPHIC MAPS, SCALE 1 TO 62,500. LATITUDE AND LONGITUDE LINES BEING REPRESENTED BY BORDER LINES AS SHOWN.

- DENOTES ONE INCH SPACES ON BORDER LINE OF ORIGINAL TRACING.

4

STATE OF WEST VIRGINIA
DEPARTMENT OF MINES
OIL AND GAS DIVISION

Sittleton

WELL RECORD

Storage

Permit No. WET-212-R

Oil or Gas Well Gas
(KIND)

Company THE MANUFACTURERS LIGHT AND HEAT COMPANY
Address 800 Union Trust Building, Pittsburgh, Pa.
Farm J. D. Montgomery Acres 139
Location (waters) _____
Well No. 4225 Elev. 1184'
District Proctor County Wetzel
The surface of tract is owned in fee by _____
Address _____
Mineral rights are owned by _____
Address _____
Drilling commenced September 1, 1953
Drilling completed October 30, 1953
Date Shot _____ From _____ To _____
With _____
Open Flow 1.0 /10ths Water in 1/8 _____ Inch
_____ /10ths Merc. in _____ Inch
Volume .122 _____ Cu. Ft.
Rock Pressure 43 _____ lbs. 48 _____ hrs.
Oil _____ bbls., 1st 24 hrs.
Fresh water _____ feet _____ feet
Salt water _____ feet _____ feet

Casing and Tubing	Used in Drilling	Left in Well	Packers
Size			
16			Kind of Packer _____
13			
10		411'8"	Size of _____
8 1/4		1525'11"	
7		1977'6"	Depth set _____
5 3/16			
3			Perf. top _____
2			Perf. bottom _____
Liners Used			Perf. top _____
			Perf. bottom _____

CASING CEMENTED	SIZE	No. Ft.	Date
COAL WAS ENCOUNTERED AT		FEET	INCHES
	FEET	INCHES	FEET
	FEET	INCHES	FEET

Formation	Color	Hard or Soft	Top	Bottom	Oil, Gas or Water	Depth Found	Remarks
Top of Maxon Sand			1975		Schlumberger Measurement		
Bottom of Maxon Sand			1985				
Total Depth			1985				

