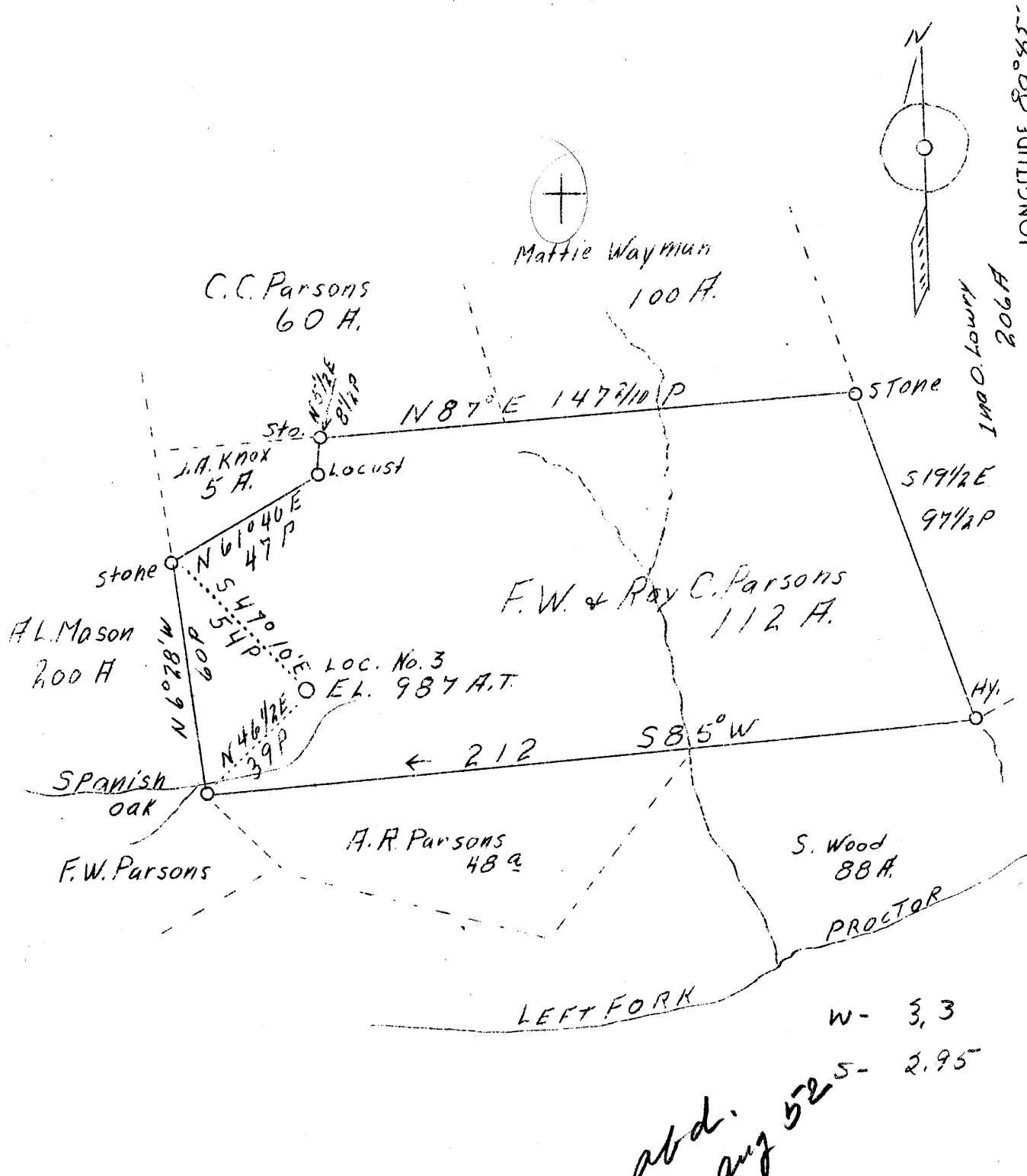


LATITUDE 39°45'

LONGITUDE 80°45'



New location

Company	Bahren-Goad Co.	STATE OF WEST VIRGINIA
Address	Charleston, W. Va.	Department of Mines
Farm	F.W. & Roy C. Parsons	OIL AND GAS DIVISION
Tract	1	Charleston
Acres	112	
Well (Farm) No.	3	WELL LOCATION MAP
El. (S. L.)	987	File No. <u>Wet-219</u>
Quadrangle	New Martinsville	x Denotes location of well on U.S. Topographic Maps, scale 1 to 62,500, latitude and longitude lines being represented by border lines as shown.
County	Wetzel	- Denotes one inch spaces on border line of original tracing.
District	Proctor	
Eng.	F.W. Parsons	
Eng. Reg. No.	203	
File No.	5	
Date	1/24/39	
Scale	1" = 40 P.	

WEST VIRGINIA DEPARTMENT OF MINES

OIL & GAS DIVISION

WELL RECORD

Permit No. Wet-219

Gas Well

New Martinsville Quad.

CASING & TUBING

Company	Boren-Goad Company	10	18
Address	Charleston, W. Va.	8-1/4	97
Farm	F. W. Parsons ACRES 112	6-5/8	717
Well No.	2 ELEV. 987	5-3/16	902 902
District	Proctor - Wetzel County		
Surface & Mineral	F. W. Parsons, Proctor, W. Va.	COAL ENCOUNTERED:	
Drilling commenced	Jan. 27, 1939	Feet	Inches
Drilling completed	March 21, 1939	585	12
Date shot	3/21/39 - Depth 959-969	674	24
	1036-1041		
Open Flow			
Volume	73,000 c.f.		
Rock Pressure	138 lbs. hrs.		
Water			

Formation Color ^{Max} Top Base Result Formation Color ^{Max} Top Base Result

Formation	Color	Max	Top	Base	Result	Formation	Color	Max	Top	Base	Result
Shale			0	250							
Sand			250	272							
Shale			272	295							
Gritty Lime			295	315							
Unrecorded			315	470							
Red Lime			470	585							
Mapletown Coal			585	586							
Gray Shale			586	605							
Lime			605	665							
Gray Shale			665	674							
Pittsburgh Coal			674	676	10 bailers water						987
Lime & Shale			676	702							674
Murphy Sand			702	715							313
Gray Shale			715	750							
Lime Sand			750	798							
Red Rock			798	887							
White Slate			887	906							
Lime			906	915							
Horseneck Sand			915	942	Show Gas - 930						
Break			942	954							
Cow Run Sand			954	967	Gas 963 - 967						
Sand			967	985							
Broken Sand			985	1036	Gas 1036 - 1041						
Gas			1036	1041							
Pink Rock			1041	1056							
Shale			1056	1200							
Second Cow Run Shale			1200	1206							