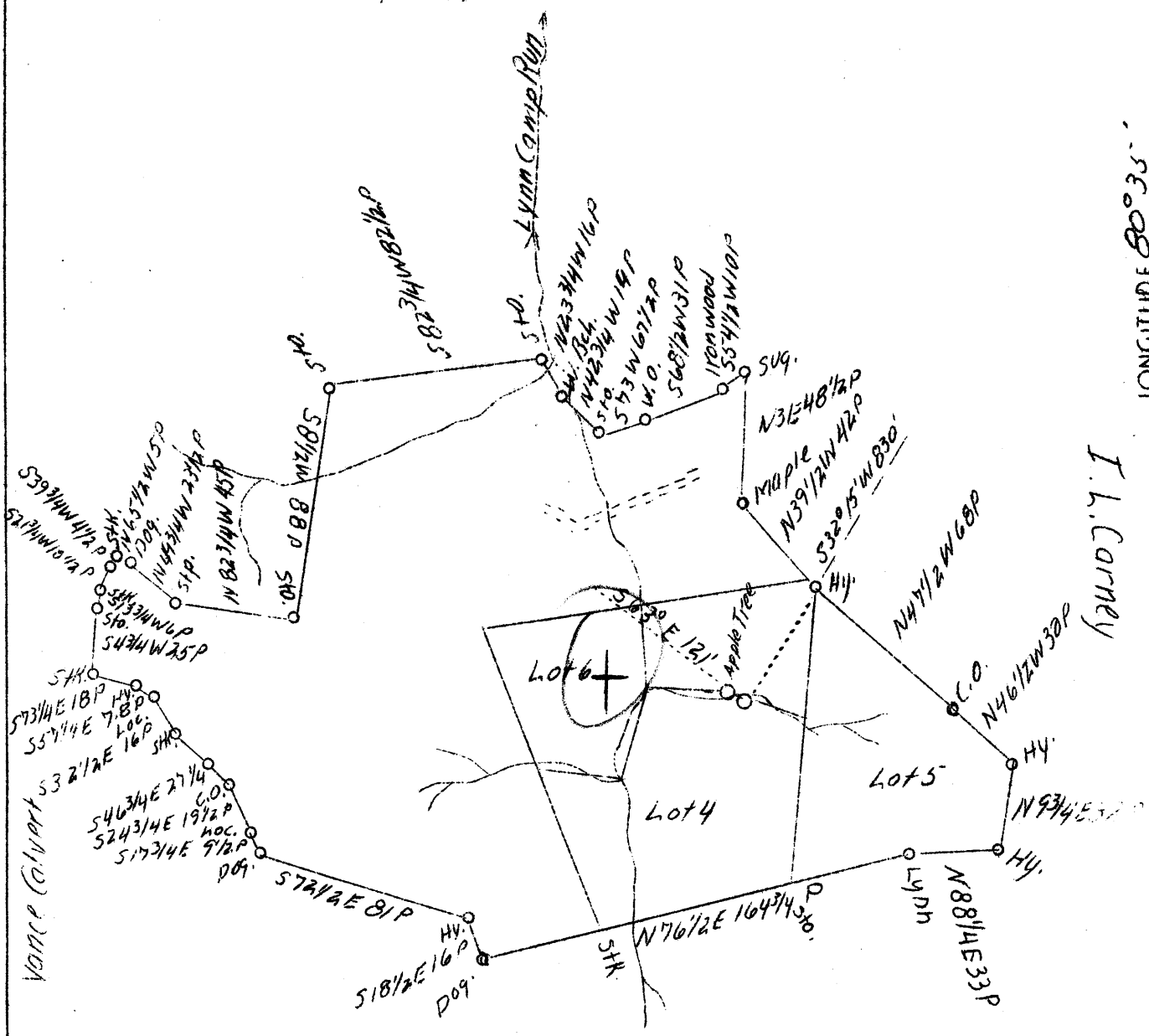


LATITUDE 39° 45'

LONGITUDE 80° 35'

E.W. Yocum



I. L. Corney

Harry Lemaster

W - 3.46
S - 4.99

New location

Company	J.H. Ferrell	STATE OF WEST VIRGINIA
Address	Grantsville W.Va.	Department of Mines
Farm	H.L. Calvert	OIL AND GAS DIVISION
Tract	4	Charleston
Acres	240	
Well (Farm) No.	1	WELL LOCATION MAP
El. (S.L.)	1138	File No. <u>Wet-227</u>
Quadrangle	Littleton N.	
County	Wetzel	
District	Proctor	
Eng.	Bruce Ferrell, Jr.	x Denotes location of well on U.S. Topographic Maps, scale 1 to 62,500, latitude and longitude lines being represented by border lines as shown.
Date	7/10/39	- Denotes one inch spaces on border line of original tracing.
Scale	1" = 60 Pcs.	

WEST VIRGINIA DEPARTMENT OF MINES
OIL & GAS DIVISION
W E L L R E C O R D

Permit No. Wet-227
Littleton Quad.

Oil Well

Company J. H. Farrell
Address Grantsville, W. Va.
Farm H. L. Calvert ACRES 250
Location Lynn Camp
Well No. 1 ELEV. 4136
District Proctor - Wetzel County
Surface & Mineral H. L. Calvert, Silver Hill, W. Va.
Commenced July 1, 1939
Completed March 5, 1940
Shot 3/6/40 - depth 3110-35
Open Flow 70/16ths Merc. - inch.
Oil 8 bbls.
Fresh Water 190
Salt Water 2060

CASING & TUBING

16	450	450
8-1/4	1570	1570
6-5/8	2090	2090
5-3/16	2450	2450
2	3135	3135

Coal at 1033

Soil	dk	s	0	8	Slate	bk	s	2480	2650	
Sand	yl	s	8	35	Sand Berea Grit			2650	2695	
Slate	wh	s	35	90	Slate	wh	s	2695	2775	
Rock	rd	s	90	110	Sand	wh	h	2775	2780	
Sand	yl	s	110	140	Lime	wh	s	2780	2890	
Lime	wh	h	140	180	Slate	bk	s	2890	2950	
Sand	bl	s	180	210	Lime	rd	h	2950	2960	
Lime	wh	h	210	235	Slate	bk	s	2960	2990	
Shell	bl	h	235	250	Shell	wh	h	2990	3030	
Red Rock	rd	s	250	360	Slate	wh	s	3030	3070	
Slate	bl	s	360	450	Sand Gordon Stray			3070	3085	Oil
Red Rock	rd	s	450	455	Slate	bk	s	3085	3110	
Slate Shells		s	455	670	Sand Gordon			3110	3135	
Sand	wh	h	670	690	Total Depth				3135	
Slate	wh	s	690	735						
Lime	wh	h	735	745						
Red Rock	rd	s	745	765						
Lime	wh	h	765	795						
Slate & Lime		h	795	810						
Mt. Coal	bk	s	810	815						
Lime	wh	h	815	1033						
+125 Pitt. Coal		s	1033	1041						
Slate	wh	s	1041	1065						
Red Rock	rd	s	1065	1100						
Sand	wh	h	1100	1120						
Slate	wh	s	1120	1135						
Red Rock	rd	s	1135	1235						
Slate	wh	s	1235	1300						
Red Rock	rd	s	1300	1365						
Sand	wh	h	1365	1410						
Slate	bk	s	1410	1498						
Red Rock	rd	s	1498	1510						
Slate	wh	s	1510	1530						
Lime	wh	h	1530	1570						
Slate	bl	h	1570	1590						
Sand	wh	h	1590	1625						
Slate&Shells		s	1625	2030						
Lime	bk	h	2030	2042						
Sand	wh	s	2042	2112 W 2050 (Maxtom)						
Slate	bk	s	2112	2180						
Lime	wh	h	2180	2215 - 1042						
Sand Big Injun			2215	2480						

WEST VIRGINIA DEPARTMENT OF MINES
OIL & GAS DIVISION
WELL RECORD

Permit No. ^{Grant} Wet-227
Littleton Quad.

Oil & Gas Well

Company J. H. Ferrell
Address Grantsville, W. Va.
Farm H. L. Calvert ACRES -
Location -
Well No. 1 ELEV. 1138
District Procter - Motzel County
Surface & Mineral -
Commenced Aug. 21, 1939
Completed April 5, 1940
Open Flow -
Volume -
Rock Pressure -
Oil -
Water -

CASING & TUBING
16 14
10 437
8-1/4 1564
6-5/8 2150
5-3/16 2456

Use this one

Clay	0	15	Water	Slate	1530	1530
Sand	15	30		Sand	1550	1575
Lime	30	85		Break	1575	1600
Red Rock	85	105		Salt Sand	1600	1685
Lime	105	180		Slate	1685	1690
Slate	180	240		1st Salt Sand	1690	1720
Red Rock	240	275		Slate	1720	1740
Slate	275	345		2nd Salt Sand	1740	1790
Lime	345	460		Slate	1790	1840
Red	460	480		3rd Salt Sand	1840	1900
Slate	480	500		Slate	1900	1995
Red Rock	500	510		Winton Sand	1995	2100
Lime	510	530		Break	2100	2102
Slate&Shells	530	540		Line - black	2102	2120
Lime	540	730		Lime	2120	2150
Red Rock	730	735		Big Lime	2150	2210 -1012
Lime	735	760		Injun Sand	2210	2470
Red Rock	760	770		Slate	2470	2735
Lime	770	900		Lime	2735	2898
Slate	900	915		Red Rock	2898	2919
Mapletown Coal	915	918		Slate	2919	3047
Lime	918	1025		Gordon Stray	3047	3070
Slate	1025	1033		Slate	3070	3080
Pittsburgh Coal	1033	1037		Gordon Sand	3080	3081
Slate	1037	1042		To	3084	3095
Lime	1042	1075		Total Depth		3100
Red Rock	1075	1280				
Lime	1280	1290				
Slate	1290	1315		Water at 1770 - enough to drill with		
Red Rock	1315	1350				
Gray Shale	1350	1380		Water at 2050 - hole full		
Red Rock	1380	1435				
Gritty Lime	1435	1460		Gordon stray 3047		
Gray Shale	1460	1510				
Sand	1510	1520		Gas 3081-3084		
Slate	1520	1527				
Lime	1527	1530		Oil 3084-3095		