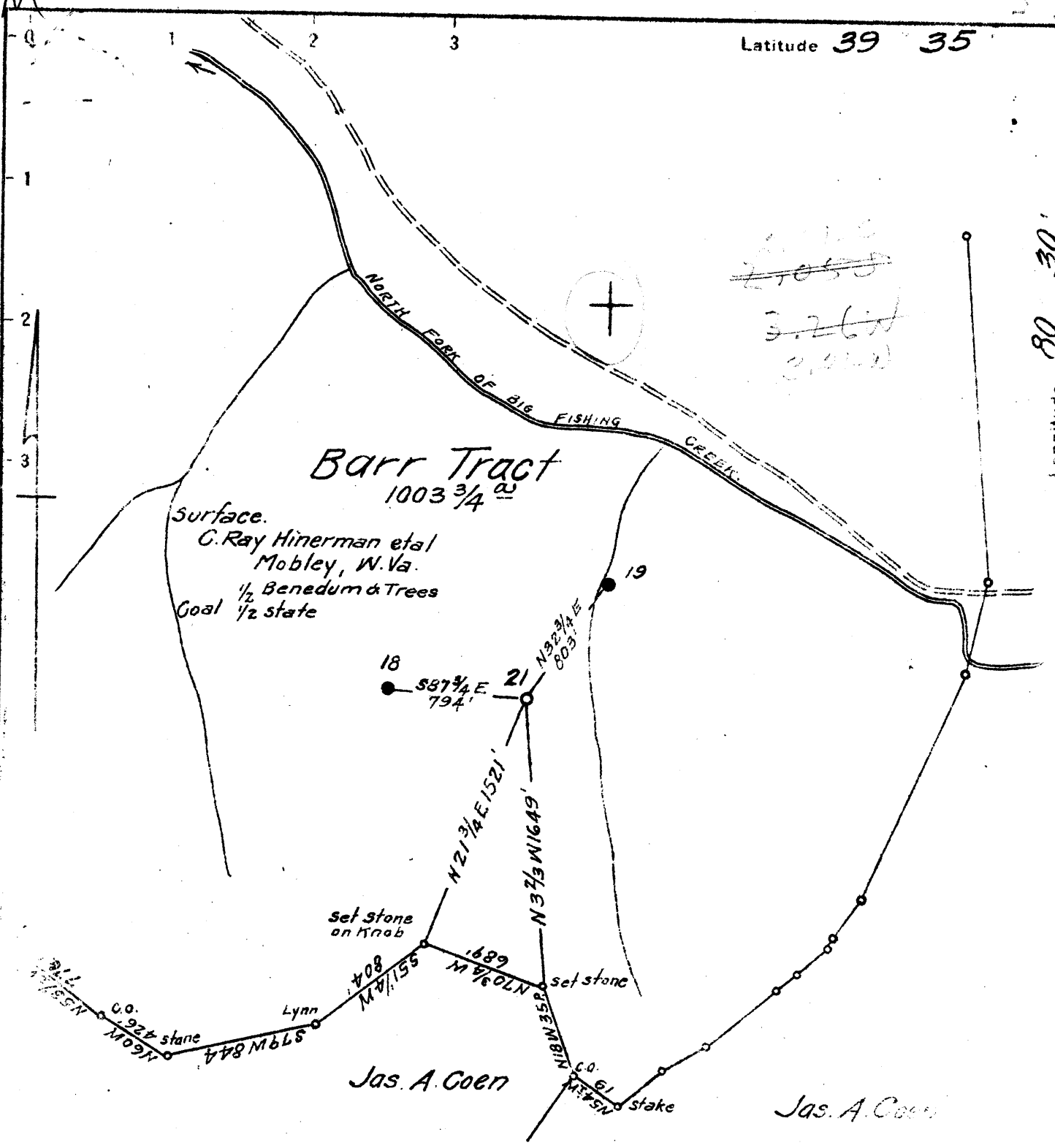


Latitude 39 35

Longitude 80 30



New Location X
 Drill Deeper
 Abandonment

N8E4 Map N69

Company South Penn Natural Gas Co.
 Address Parkersburg, W. Va.
 Farm Barr Tract
 Tract _____ Acres 1003 3/4 Lease No. 81357
 Well (Farm) No. 21 Serial No. _____
 Elevation (Spirit Level) 1071.83
 Quadrangle Littleton
 County Wetzel District Grant
 Engineer Ermon Haines
 Engineer's Registration No. _____
 File No. _____ Drawing No. _____
 Date 6-15-44 Scale 1"=800'

STATE OF WEST VIRGINIA
 DEPARTMENT OF MINES
 OIL AND GAS DIVISION
 CHARLESTON

WELL LOCATION MAP
 FILE NO. WET-312

+ Denotes location of well on United States Topographic Maps, scale 1 to 62,500. latitude and longitude lines being represented by border lines as shown.
 - Denotes one inch spaces on border line of original tracing.

WEST VIRGINIA DEPARTMENT OF MINES
OIL & GAS DIVISION
W E L L R E C O R D

Permit No. Wet 312		Oil Well
Littleton Quad.		CASING & TUBING
Company	South Penn Natural Gas Company	
Address	Union Trust Bldg., Parkersburg, W.Va.	
Farm	Barr Tract	Acres 1003.75
Location	Big Fishing Creek	10 480 480
Well No.	21 Elev. 1071.83	8 1/2 1320 1320
District	Grant Wetzel County	6 5/8 2067 2067
Surface	C. Ray Hinerman et al, Mobley, W.Va.	
Mineral	South Penn Natural Gas Co. et al .	
Commenced	Parkersburg, W.Va.	Coal at 708' 48"
Completed	July 20, 1944	810' 96"
Date shot	Aug. 19, 1944	
Volume	Aug. 19, 1944 Depth 2182 to 2198	
Oil	with 60 qts. (Bomb Shot)	*Est. of producing 50 bbls. of oil per day.
Water	1721-1724 : 1774-1777 2 blrs.	Hope fills up 800' of oil.

Conductor		14	Gritty Lime	1328	1342
Clay	0	12	Slate-Lime S	1342	1375
Rock	12	18	Sand	1375	1400
Slate	18	20	Black Shale	1400	1412
Rock	30	45	Lime	1412	1457
Slate	45	62	Dark Slate	1457	1460
Rock	82	85	Gas Sand	1460	1527
Slate	85	105	Slate	1527	1531
Lime	105	125	Sand	1531	1548
Red Rock	125	140	Slate & Shell	1548	1600
Slate	140	170	Sand	1600	1610
Lime	170	205	Brown Slate	1610	1625
Red Rock	205	220	1st Salt Sand	1625	1664
Lime, Slate	220	360	Slate, Dark	1664	1667
Gritty Lime	360	383	Sand	1667	1675
Slate	383	425	Slate	1675	1685
Sand	425	445	Gritty Lime	1685	1712
Slate	445	465	Black Shale	1712	1717
Lime-Sand	465	490	2nd Salt Sand	1717	1860
Slate	490	505	Slate	1860	1875
Lime Shells	505	525	White Sand	1875	1895
Sand, White	525	560	Gritty Lime	1895	1918
Slate, Lime, Sand	560	708	Red Rock	1918	1922
Mapletown Coal	708	712	Slate	1922	1930
Slate, Lime	712	810	Red Rock	1930	1934
Ph. Coal	810	818	Lime	1934	1949
Slate	818	821	Red Rock	1949	1958
Gritty Lime	821	830	Lime	1958	1966
Slate, Lime	830	868	Red Slate-Lime	1966	1975
Red Rock	868	890	Black Slate	1975	1996
Lime, Slate	890	948	Lime	1996	2012
Sand	948	973	Slate	2012	2026
Slate	973	1004	Little Lime	2026	2030
Red Rock	1004	1020	Pencil Cave	2030	2034
Slate, Lime	1020	1038	Big Lime	2034	2083
Red Rock	1038	1043	BIG INJUN	2083	
Slate	1043	1046	Gas & Oil show 2182-2187	468,	255 C.F.
Red Rock	1046	1058	& 7 hrs, later- Oil & Gas 2188-2198		
Lime, Slate	1058	1105	365,178 C.F. & 7 bbls Oil (Total depth)		
Red Rock	1105	1128	REMARKS: Gas test 7 hrs. after 1st gas		
Slate, Lime	1128	1185	6"M-1 1/2" or 365,178 C.F. Well was shot in		
Slate, Shell	1185	1212	B. Injun & produced 32 bbls. of oil after		
Red Rock	1212	1215	shot & gas test 2.2" M-1 1/2" or 221,202'.		
Gritty Lime	1215	1238	No drilling difficulties. Tools were		
Red Rock	1238	1243	stuck A.S. by drilling out filling on		
Lime	1243	1246	top of bomb shot & due to not enough		
Slate	1246	1255	water put in hole the gas broke thru		
Black Shale	1255	1270	bridge & stuck the tools which were		
Gritty Lime	1270	1285	later gotten out. Not acidized. Rock		
White Slate	1285	1304	pressure not taken due to conditions.		
Big Dunkard	1304	1310	Must be a very high R.P. Gas from Pitts.		
Slate & Shell	1310	1328	Coal ,4,000 C.F. per day utilized by		
			braden head.		

BARR TRACT NO. 21~~8~~ WELL.

Grant District, Wetzel County, W. Va.

By South Penn Natural Gas Co., Barkersburg, W. Va.

Located 2.03 mi. S. of 39° 35' and 3.27 mi. W. of 80° 30' - SE - Littleton Quadrangle

Elevation, 1071.83' L.

Permit Wet-312.

Completed Aug. 1944.

10 bbls. oil and 300,000 cu. ft. gas in Big Injun.

Section based on samples from 1625 to 2211', examined by J. H. C. Martens.

Record to RCT from Martens March 24, 1945.

Top. Bottom. Thickness.

PENNSYLVANIAN, 270+ FEET

1625 - 1664	39	Sandstone, light-gray to brownish, medium-grained
1664 - 1675	11	Siltstone, gray, coarse
1675 - 1685	10	Shale, dark-gray to black, with a little coal, 70%; gray siltstone, 30%
1685 - 1705	20	Shale, dark-gray to black, very silty
1705 - 1714	9	Shale, dark-gray, with siderite concretions and a little coal
1714 - 1836	122	Sandstone, light-gray to white, medium- to coarse-grained
1836 - 1853	17	Siltstone, gray
1853 - 1874	21	Shale, very dark gray
1874 - 1895	21	Sandstone, white, fine

MAUGH CHUNK GROUP, 115 FEET

1895 - 1900	5	Shale, green
1900 - 1909	9	Shale and siltstone, green, dolomitic
1909 - 1932	23	Shale, red
1932 - 1942	10	Siltstone, light-green, calcareous, 50%; red shale, 50%
1942 - 1950	8	Shale, red and green
1950 - 1968	18	Shale, red, 50%; green siltstone and shale, 50%
1968 - 1975	7	Shale, red, calcareous
1975 - 1984	9	Shale, gray, soft, distinctly laminated
1984 - 1992	8	Limestone, brownish-gray, 60%; red and gray shale, 40%
1992 - 2010	18	Shale, gray and green, soft, thinly laminated

GREENBRIER LIMESTONE, 125 FEET

2010 - 2041	31	Limestone, light-brown, with considerable amount of shale cavings
2041 - 2087	46	Limestone, brown and light-brown; a little sand, 2082-2087'
2087 - 2092	5	Limestone, very light brown, somewhat dolomitic, slightly sandy
2092 - 2102	10	Limestone, light-brown, slightly sandy
2102 - 2110	8	Limestone, light-brown, oolitic, sandy
2110 - 2118	8	Limestone, very light brown, sandy; contains a few oolites
2118 - 2129	11	Sandstone, nearly white, fine- to medium-grained, highly calcareous

Big Lim

2129 - 2135	6	Sandstone, nearly white, fine, with a few coarse grains, calcareous, and dolomitic
-------------	---	--

POCONO FORMATION, 76+ FEET

2135 - 2211	76	Sandstone, white to very light gray, fine- to medium-grained; sample from 2187 to 2198' contains fragments showing pore spaces lined with white clayey material (gas, 2182-2187'; oil and gas, 2188-2198')
-------------	----	--

2211 Total depth by samples