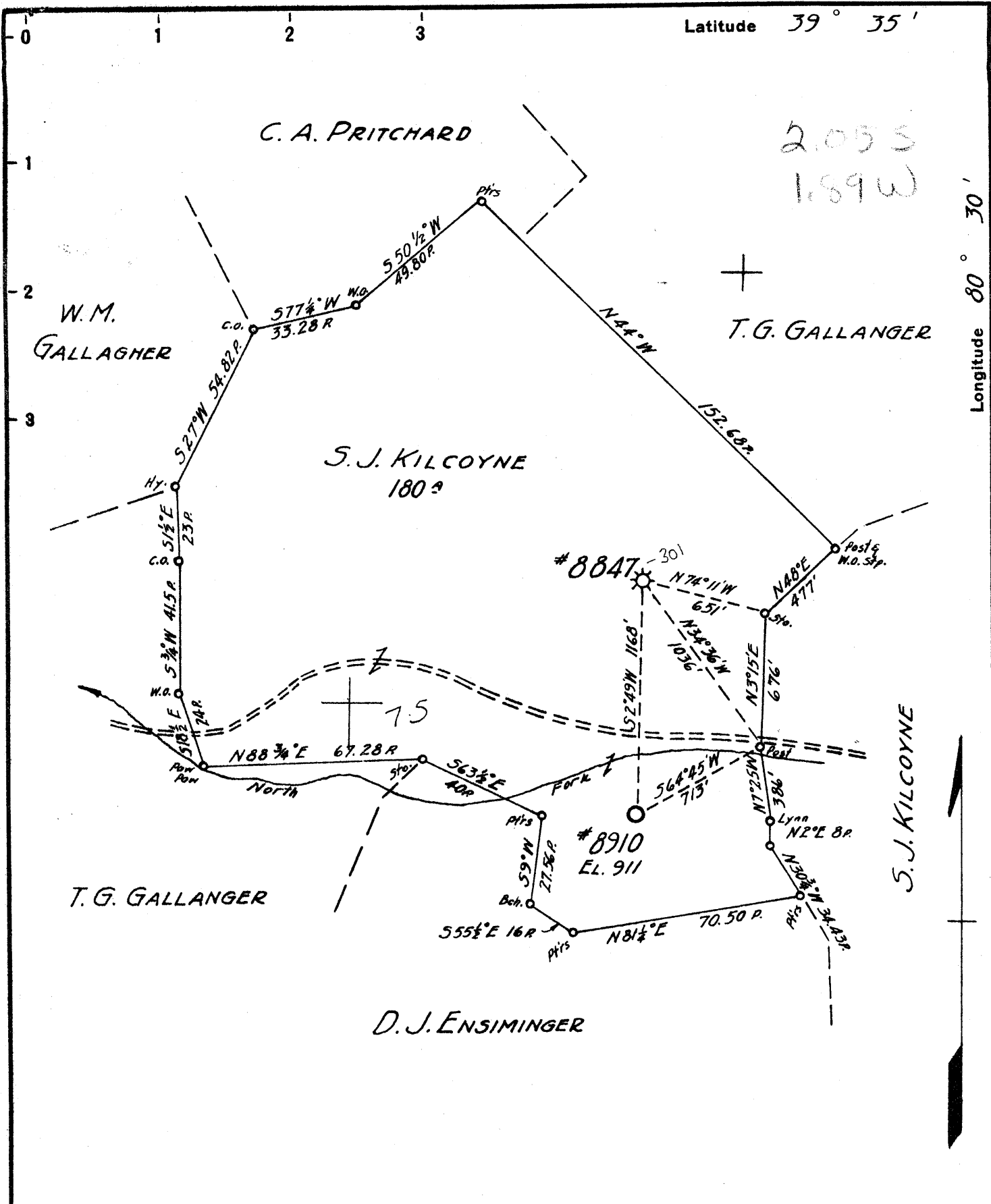


Latitude 39° 35'

Longitude 80° 30'



2.05 S
1.89 W

15

New Location...
 Drill Deeper...
 Abandonment...
 155442 4-26-68

Map Sh. 32. Sq. N8 E5. F.B. 591 P.22

Company	Hope Natural Gas Co.		
Address	Clarksburg, W.Va.		
Farm	S.J. Kilcoyne		
Tract	Acres	180	Lease No. 53638
Well (Farm) No.	Serial No.	8910	
Elevation (Spirit Level)	911		
Quadrangle	Littleton	SE	
County	Wetzel	District	Grant
Engineer	W.M. Bowers		
Engineer's Registration No.	900		
File No.	Drawing No.		
Date	6-26-44	Scale	1" = 40 P.

STATE OF WEST VIRGINIA
 DEPARTMENT OF MINES
 OIL AND GAS DIVISION
 CHARLESTON

WELL LOCATION MAP
 FILE NO. WET-313-P

+ Denotes location of well on United States Topographic Maps, scale 1 to 62,500, latitude and longitude lines being represented by border lines as shown.

- Denotes one inch spaces on border line of original tracing.

WEST VIRGINIA DEPARTMENT OF MINES
OIL & GAS DIVISION
W E L L R E C O R D

Permit No. Wet 313				
Littleton Quad.				
Company	Hope Natural Gas Company			Coal Gas Well
Address	445 West Main St., Clarksburg, W.Va.			CASING & TUBING
Farm	S.J. Kilcoyne	Acres 180	8 $\frac{1}{2}$	24 24
Location			6 $\frac{5}{8}$	152 152
Well No	8910	Elev. 911	5 $\frac{3}{16}$	595 595
District	Grant	Wetzel County		
Surface				Casing not cemented
Mineral				Coal at 520' 48"
Commenced	July 13, 1944		624'	?
Completed	July 24, 1944			
Open flow	7/10ths W in 1" FM			
Fresh Water	40-55			
Salt Water	None recorded			

DRILLED TO PITTSBURGH COAL ONLY

Sand	240	275	
Native Coal	520	524	
Lime	550	590	
Lime	595	620	
Slate	620	624	
Pittsburgh Coal	624	?	Gas 624
TOTAL DEPTH		627	