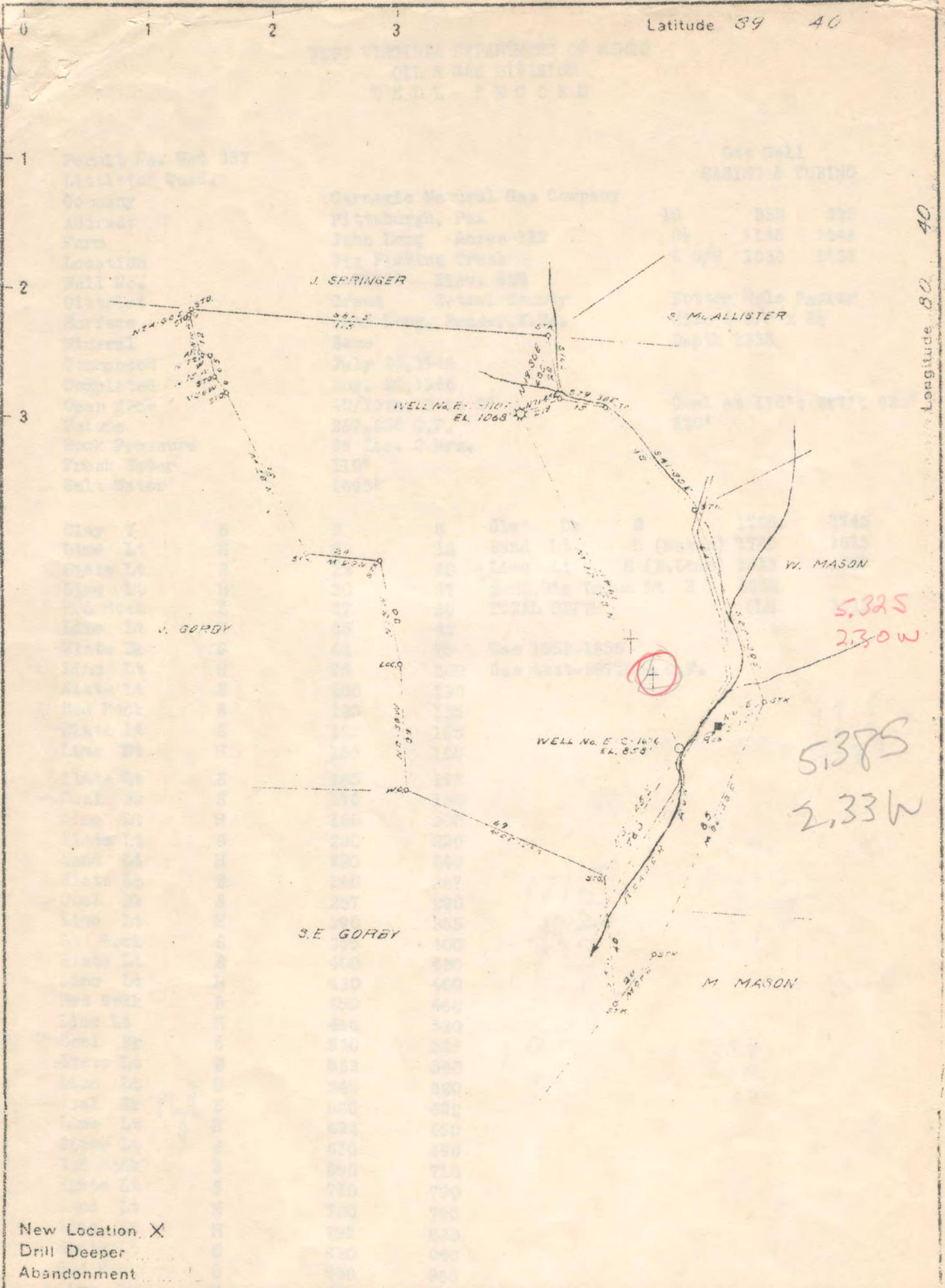


Latitude 39 40

Longitude 80 40



New Location X  
 Drill Deeper .....  
 Abandonment .....

Company CARNEGIE NATURAL GAS CO.  
 Address PITTSBURGH, PA.  
 Farm JOHN LONG  
 Tract \_\_\_\_\_ Acres 112 Lease No. E-10493-75  
 Well (Farm) No. 2 Serial No. 1626  
 Elevation (Spint Level) 858'  
 Quadrangle LITTLETON S.W.  
 County WETZEL District GREEN  
 Engineer R. L. SWEENEY  
 Engineer's Registration No. \_\_\_\_\_  
 File No. \_\_\_\_\_ Drawing No. \_\_\_\_\_  
 Date 3-20-46 Scale 1" = 40' or 600'

STATE OF WEST VIRGINIA  
 DEPARTMENT OF MINES  
 OIL AND GAS DIVISION  
 CHARLESTON

WELL LOCATION MAP  
 FILE NO. WET-333

+ Denotes location of well on United States Topographic Maps, scale 1 to 62,500, latitude and longitude lines being represented by border lines as shown.

- Denotes one inch spaces on border line of original tracing

WEST VIRGINIA DEPARTMENT OF MINES  
OIL & GAS DIVISION  
WELL RECORD

Permit No. Wet 333  
Littleton Quad.

Gas Well  
CASING & TUBING

Company Carnegie Natural Gas Company  
Address Pittsburgh, Pa.  
Farm John Long Acres 112  
Location Big Fishing Creek  
Well No. 2-El626 Elev. 858  
District Green Wetzell County  
Surface John Long, Reader, W.Va.  
Mineral Same  
Commenced July 24, 1946  
Completed Aug. 26, 1946  
Open flow 40/10ths W in 2"  
Volume 267,000 C.F.  
Rock Pressure 68 lbs. 2 hrs.  
Fresh Water 110'  
Salt Water 1695'

10	333	333
8 1/4	1146	1146
6 5/8	1838	1838

Bottom Hole Packer  
Size 6 5/8 x 8 1/4  
Depth 1838

Coal at 178'; 287'; 620'  
530'

Clay Y	S	0	8	Slate Dk	S	1705	1745
Lime Lt	H	8	12	Sand Lt	H (Maxon)	1745	1815
Slate Lt	S	12	20	Lime Lt	H (B.Lime)	1815	1852
Lime Lt	H	20	27	Sand, Big Injun Lt	H	1852	
Red Rock	S	27	35	TOTAL DEPTH	SLM	1912	
Lime Lt	H	35	42				
Slate Dk	S	42	75	Gas 1852-1855			
Lime Lt	H	75	100	Gas test-267,000 C.F.			
Slate Lt	S	100	130				
Red Rock	S	130	135				
Slate Lt	S	135	155				
Lime Et	H	155	165				
Slate Lt	S	165	178				
Coal Bk	S	178	180				
Lime Lt	H	180	200				
Slate Lt	S	200	220				
Sand Lt	H	220	240				
Slate Lt	S	240	287				
Coal Bk	S	287	290				
Lime Lt	H	290	355				
Red Rock	S	355	400				
Slate Lt	S	400	430				
Lime Lt	H	430	450				
Red Rock	S	450	460				
Lime Lt	H	460	530				
Coal Bk	S	530	533				
Slate Lt	S	533	540				
Lime Lt	H	540	620				
Coal Bk	S	620	622				
Lime Lt	H	622	650				
Slate Lt	S	650	690				
Red Rock	S	690	710				
Slate Lt	S	710	780				
Sand Lt	H	780	795				
Lime Lt	H	795	830				
Slate Lt	S	830	840				
Red Rock	S	840	860				
Lime Lt	H	860	880				
Slate Lt	S	880	930				
Red Rock	S	930	955				
Lime Lt	H	955	970				
Slate Dk	S	970	995				
Sand Lt	H	995	1065	Little Dunkard			
Slate Dk	S	1065	1100				
Rock Pink	S	1100	1120				
Slate Lt	S	1120	1215				
Gas Sand Lt	H	1215	1255				
Slate Dk	S	1255	1275				
Lime Lt	H	1275	1290				
Sand Lt	H	1290	1335	1st Salt Sand			
Slate Dk	S	1335	1360				
Sand Lt	H	1360	1405	2nd salt Sand			
Slate Dk	S	1405	1450				
Sand Lt	H	1450	1625				
Slate Dk	S	1625	1660				
Sand Lt	H	1660	1705	3rd Salt Sand			

658  
178  
440

658  
287  
377

658  
530  
533

658  
620  
622

858  
620  
710

1815  
852  
957

1815  
125  
1940  
857  
1083

1705  
1745  
1815  
1852  
1912

958  
824  
538

WEST VIRGINIA DEPARTMENT OF MINES  
OIL & GAS DIVISION  
W E L L R E C O R D

Permit No. Wet 333-D  
Littleton Quad.  
Company  
Address  
Farm  
Location  
Well No.  
District  
Surface  
Mineral  
D.D. Commenced  
D.D. Commenced

Carnegie Natural Gas  
Pittsburgh, Pa.  
John Long Acres 112  
Big Fishing Creek  
2 E 1626 Elev. 858  
Green Wetzel County  
John Long, Reader, W.Va.  
John Long, Reader, W.Va.  
May 21, 1947  
June 10, 1947

Gas Well  
CASING & TUBING

DRILLED DEEPER

Commenced to D.D. at 1912' in Big Injun Sand

✓ Sand	Lt	H	1912	2104	Big Injun
Slate	Dk	S	2104	2255	
✓ Sand	Lt	H	2255	2285	Berea
Slate	Dk	S	2285	2520	
Red Rock		S	2520	2525	
Slate	Dk	S	2525	2540	
Red Rock		S	2540	2550	
Lime	Lt	H	2550	2575	
Slate	Dk	S	2575	2668	
✓ Sand	Lt	H	2668	2685	Gas 2672 and 2675-2678 Gordon Stray
Slate	Dk	S	2685	2702	
Slate & Shells		S	2702	2854	
Total Depth				2854	

2672  
858  
-----  
1814

2854  
1912  
-----  
942