



West Virginia Department of Environmental Protection
Office of Oil and Gas
WELL LOCATION FORM: GPS

API: 47-103-00333 P WELL NO.: WV 656386 (Long #1626)

FARM NAME: Long

RESPONSIBLE PARTY NAME: EQT Production Company

COUNTY: Wetzel DISTRICT: Green

QUADRANGLE: Pine Grove 7.5'

SURFACE OWNER: Bonnie Higgins

ROYALTY OWNER: John Long et. al.

UTM GPS NORTHING: 4382591

UTM GPS EASTING: 524977 GPS ELEVATION: 261 m (857 ft)

The Responsible Party named above has chosen to submit GPS coordinates in lieu of preparing a new well location plat for a plugging permit or assigned API number on the above well. The Office of Oil and Gas will not accept GPS coordinates that do not meet the following requirements:

1. Datum: NAD 1983, Zone: 17 North, Coordinate Units: meters, Altitude: height above mean sea level (MSL) – meters.
2. Accuracy to Datum – 3.05 meters
3. Data Collection Method:

Survey grade GPS : Post Processed Differential
Real-Time Differential

Mapping Grade GPS : Post Processed Differential
Real-Time Differential

4. Letter size copy of the topography map showing the well location.

I the undersigned, hereby certify this data is correct to the best of my knowledge and belief and shows all the information required by law and the regulations issued and prescribed by the Office of Oil and Gas.

Ben R. Sengstack
Signature

P.S. 2092
Title

5-15-2012
Date

Topo Quad: Pine Grove Scale: 1" = 2000' 103.00333 P
 County: Wetzel Date: May 14, 2012
 District: Green Project No: 40-34-00-09

47-103-00333 (WV 656386)

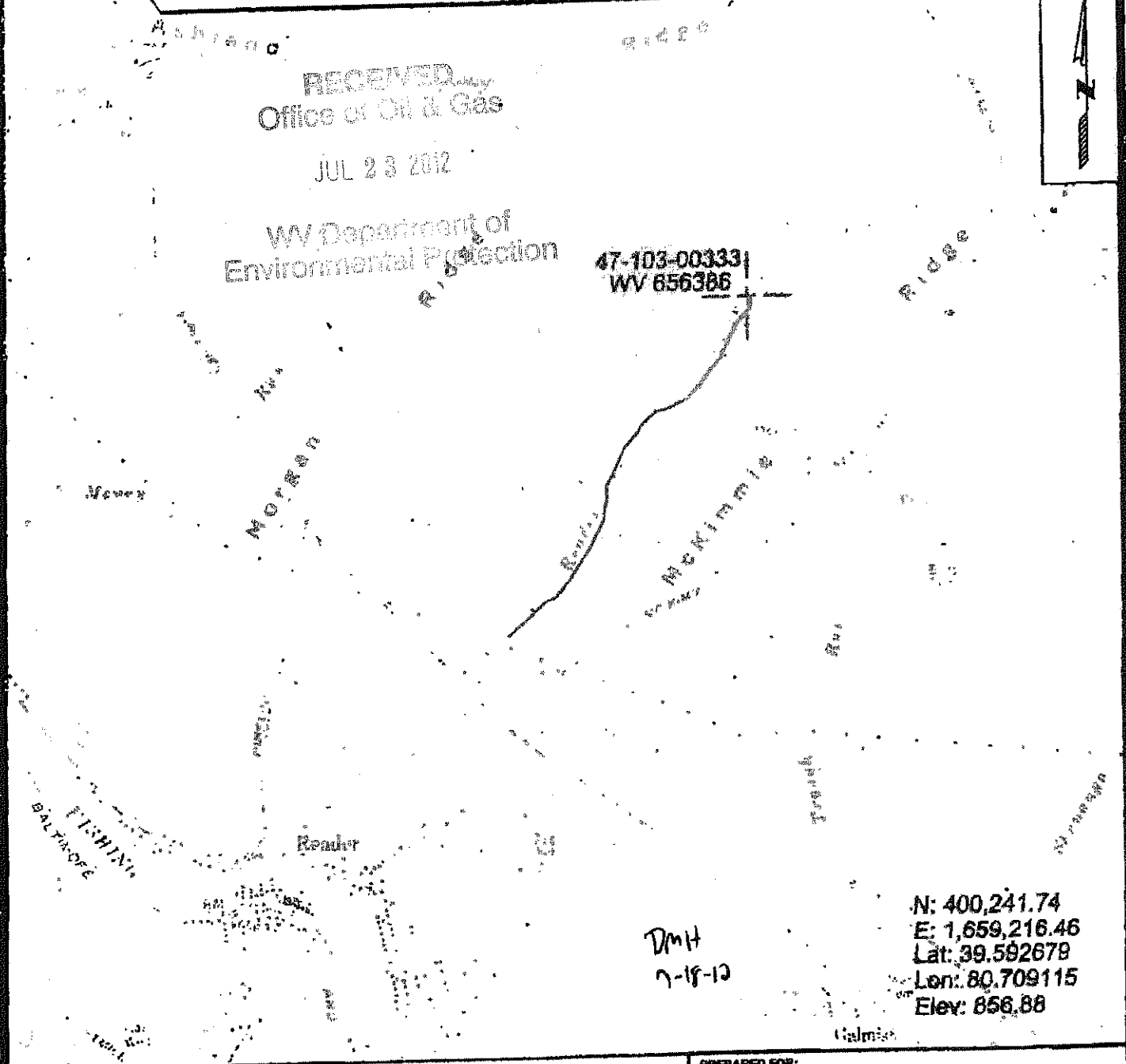
Topo

RECEIVED
Office of Oil & Gas

JUL 23 2012

WV Department of
Environmental Protection

47-103-00333
WV 656386



N: 400,241.74
 E: 1,659,216.46
 Lat: 39.592679
 Lon: 80.709115
 Elev: 856.88

DMH
7-18-12



SURVEYING AND MAPPING SERVICES PERFORMED BY:
ALLEGHENY SURVEYS, INC.

1-800-482-8606
 P.O. BOX 438
 BIRCH RIVER, WV 26610
 PH: (304) 649-8606
 FAX: (304) 649-8608

PREPARED FOR:

EQT Production Company

1710 Pennsylvania Ave.
 Charleston, WV 25302