

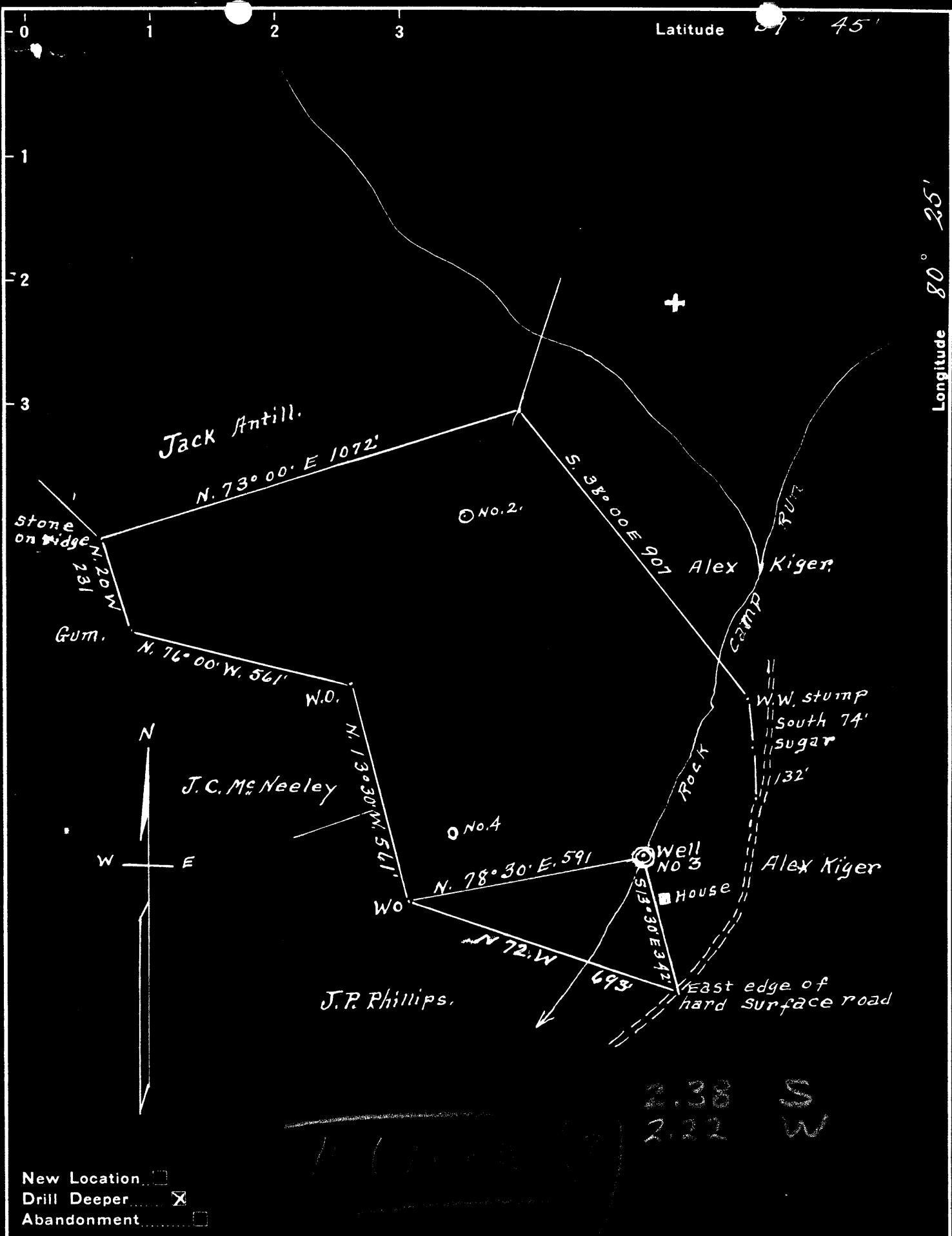
New Location
 Drill Deeper
 Abandonment

Company Haught Oil Co
 Address Hundred W. Va.
 Farm Jack Antill
 Tract one Acres 27 1/2 Lease No. 22939
 Well (Farm) No. 3 Serial No. _____
 Elevation (Spirit Level) 1080'
 Quadrangle Mannington NW
 County Weizel District Church
 Engineer A. L. Herdley
 Engineer's Registration No. _____
 File No. _____ Drawing No. _____
 Date 4-2-1948 Scale 1 inch = 300 ft

STATE OF WEST VIRGINIA
 DEPARTMENT OF MINES
 OIL AND GAS DIVISION
 CHARLESTON

WELL LOCATION MAP
 FILE NO. Wet-343

+ Denotes location of well on United States Topographic Maps, scale 1 to 62,500, latitude and longitude lines being represented by border lines as shown.
 - Denotes one inch spaces on border line of original tracing.



Company Haught Oil Co
 Address Hundred W. Va.
 Farm Jack Antill
 Tract one Acres 27 1/2 Lease No. 22939
 Well (Farm) No. 3 Serial No. _____
 Elevation (Spirit Level) 1080'
 Quadrangle Mannington
 County Wetzel District Church
 Engineer A. L. Headley
 Engineer's Registration No. _____
 File No. _____ Drawing No. _____
 Date 4-2-1948 Scale 1 inch = 300 ft

STATE OF WEST VIRGINIA
 DEPARTMENT OF MINES
 OIL AND GAS DIVISION
 CHARLESTON

WELL LOCATION MAP
 FILE NO. Wet-3,3

+ Denotes location of well on United States Topographic Maps, scale 1 to 62,500, latitude and longitude lines being represented by border lines as shown.

- Denotes one inch spaces on border line of original tracing.

WEST VIRGINIA DEPARTMENT OF MINES
OIL & GAS DIVISION
W E L L R E C O R D

Permit No. Wet 343 D
Mannington Quad.
Company
Address
Farm
Location
Well No.
District
Surface
Mineral
Commenced
Completed

Haught Oil Co. A.M. Snider Opr.
Hundred, W.Va.
Jack Antill Acres 27½
Rock Camp
3 Elev. 1080
Church Wetzel County

Dry Hole
CASING & TUBING

	13	198'8	Pld.
	10	1397'5	"
	8½	1802'4	"
	6 5/8	2094'2	2094'2
	5 3/16	2709'6	2709'6

Coal at 830' 72"

May 26, 1948 Deepened
June 2, 1948 "

DRILLED DEEPER

Pittsburgh Coal	830	836	
Dunkard Sand	1365	1435	
Gas Sand	1565	1590	
Salt Sand	1665	1755	
Little Lime	2002	2030	
Big Lime	2030	2094	Gas 2100
Big Injun	2094	2350	
30' Sand	2680	2700	
50' Sand	2837	2859	
Gordon Sand (Stray)	2835	2905	Oil 2898--2903
Total Depth		2909	

2030
1000
750

On May 26, 1948 started to deepen at 2909 and well record is as follows:

Gordon Sand	2932	2957	
4th Sand	2985	2998	
5th Sand	3040	3069	
Total Depth		3117	Dry Hole

On June 2, 1948 well was finished at total depth of 3117

Original drilling date-- Sept 4, 1905, Commenced
Sept. 24, 1905 Completed

WEST VIRGINIA DEPARTMENT OF MINES
OIL & GAS DIVISION
W E L L R E C O R D

Permit No. Wet 343
Mannington Quad.
Company
Address
Farm
Location
Well No.
District
Surface
Mineral
Commenced
Completed

Haught Oil Co. A.M. Snider Opr.
Hundred, W.Va.
Jack Antill Acres 27½
Rock Camp
3 Elev. 1080
Church County Wetzel

May 26, 1948 Deepened
June 2, 1948

Dry Hole
CASING & TUBING

13	198'8	Pld.
10	1397'5	"
8½	1802'4	"
6 5/8	2094'2	2094'2
5 3/16	2709'6	2709'6

Coal at 830' 72"

Pittsburgh Coal	830	836	
Hunkard Sand	1365	1435	
Gas Sand	1565	1590	
Salt Sand	1665	1755	
Little Lime	2002	2030	
Big Lime	2030	2094	
Big Injun	2094	2350	
20' Sand <i>bene</i>	2680	2700	
50' Sand	2837	2859	Gas 2100
Gordan Sand (Stray)	2885	2905	Oil 2898-2903
Total Depth		2909	

On May 26, 1948 started to deepen at 2909 and well record is as follows:

Gordan Sand	2932	2957	
4th Sand	2985	2998	
5th Sand	3049	3069	
Total Depth		3117	Dry Hole

On June 2, 1948 well was finished at total depth of 3117

1080
830

2030
130

2160
1080

1080

2030
1080

950

1080
830

250

3117
2909

208

3117
2957

160

2100
236

1324