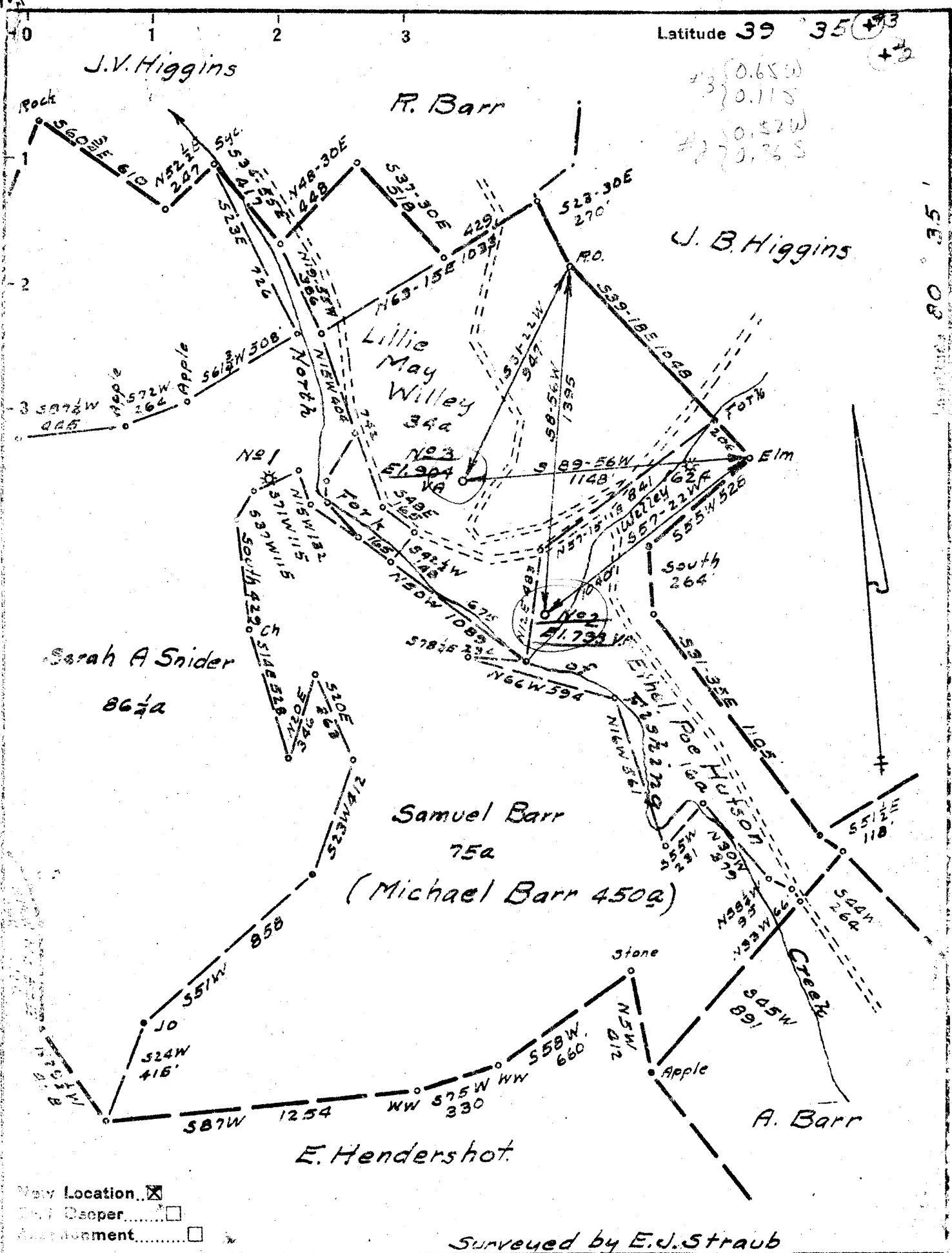


Latitude 39 35 33



New Location
 Oil Seep
 Encroachment

Surveyed by E.J. Straub

Company Louis F. Silhol et al
 Address Pittsburgh Pa.
 Farm Michael Barr et al
 Tract _____ Acres 450 Lease No. 2876
 Well (Farm) No. 293 Serial No. _____
 Elevation (Spirit Level) As Shown
 Quadrangle Littleton SE 13-4
 County Wetzel District Grant
 Engineer James D. Jeffries
 Engineer's Registration No. 1084
 File No. _____ Drawing No. _____
 Date 6-27-49 Scale 1"=500'

STATE OF WEST VIRGINIA
 DEPARTMENT OF MINES
 OIL AND GAS DIVISION
 CHARLESTON

WELL LOCATION MAP

FILE NO. Wet-356-#2
Wet-357-#3

+ Denotes location of well on United States Topographic Maps, scale 1 to 62,500, latitude and longitude lines being represented by border lines as shown.
 - Denotes one inch spaces on border line of original tracing.

WEST VIRGINIA DEPARTMENT OF MINES
OIL & GAS DIVISION
W E L L R E C O R D

356

Permit No. Wet ~~357~~
Littleton Quad.
Company
Address
Farm
Location
Well No.
District
Surface
Mineral

Gas Well
CASING & TUBING

Louis F. Silhol et al
316 Akron Ave. Pghl, 16, Pa. 10 21'8 21'8
Michael Barr et al A 450 8 1/2 122 122
Fishing Creek 6 5/8 466
2 (V. & L. Willey #1) Elev. 793'
Grant Wetzel County
Jesse Snider Heirs, Pine Grove, W.Va.
Imperial Oil & Gas Products Co.
704 2nd Ave., Pgh., Pa.

Commenced
Completed
Open flow

July 29, 1949
Aug. 5, 1949
8/10ths W in (Mapletown Coal) 1" ^{24 mcf} Casing not cemented
60/10ths W (Pitts. Coal) 1" ^{21 mcf}
60 lbs. 13 Min.
37' HF
None

No liners used

Rock Pressure
Fresh Water
Salt Water

Coal at 381'; 384';
478'

Clay	0	8
Sand & Gravel	8	26
Sandstone (blue)	26	40
Rock	40	45
Slate & Lime	46	60
Slate	60	70
Coal	70	71
Slate (Dark)	71	85
Lime	85	106
Coal	106	107
Lime	107	128
Slate	128	140
Sand	140	145
Slate & Lime	145	177
Red Rock	177	185
Lime (Hard)	185	197
Red Rock	197	205
Slate & Lime	205	276
Lime Broken	276	300
Lime Hard	300	373
Slate	373	381
Coal Mapletown Show of gas	381	384
Slate	384	387
Lime	387	393
Lime & Slate	393	458
Lime	458	470
Slate	470	476
Lime	476	478
Pitts. Coal Gas 482	478	488
Lime & Slate	488	515
T.D.		515

Steel shoe on bottom of 6 5/8" casing
Collar on bottom of 8 1/4" casing

904
381
373
904
418
476