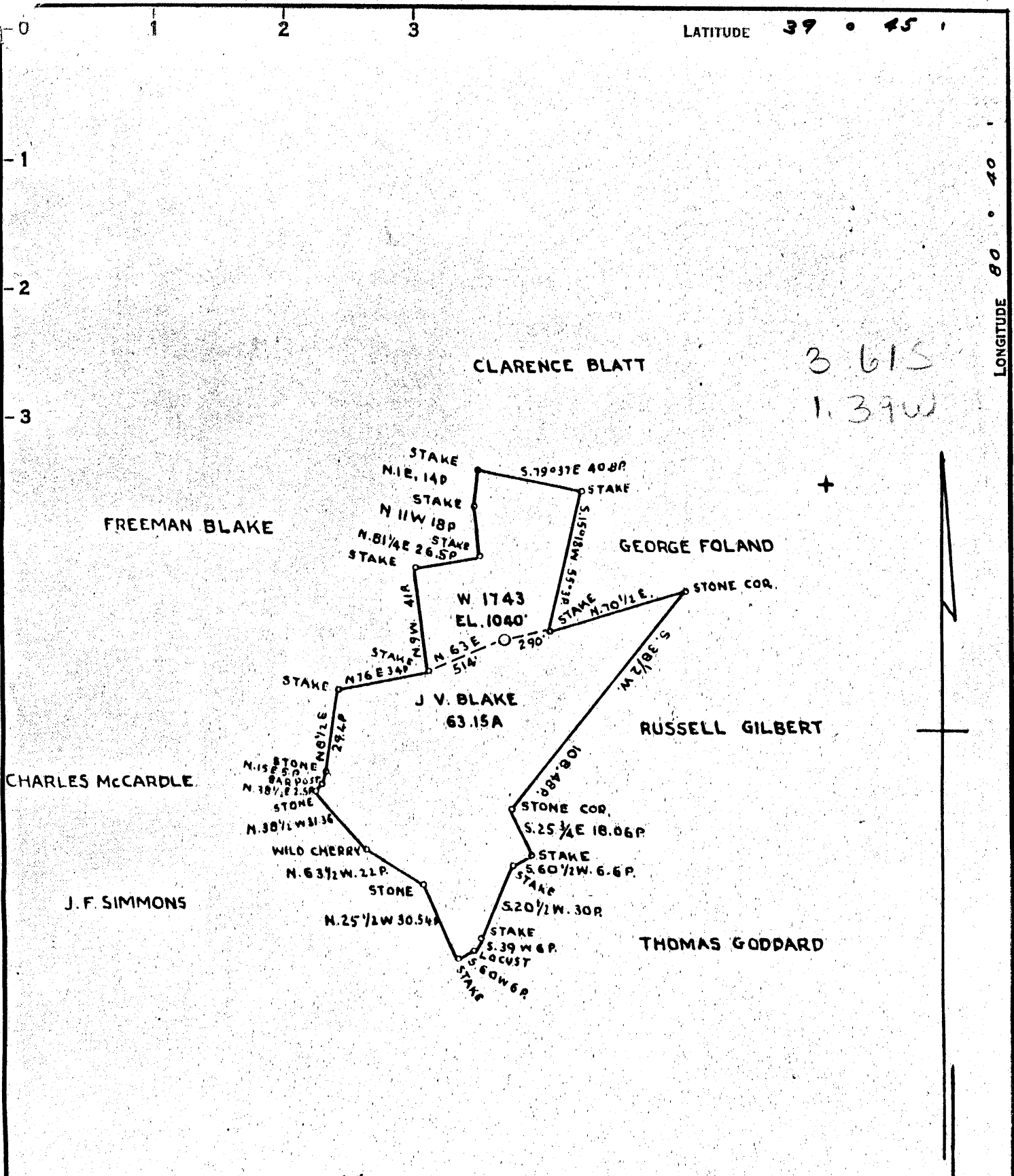


LATITUDE 39 ° 45 ' 1

LONGITUDE 80 ° 40 ' 1



3.615
1.39W

+

COAL OWNED BY Roosevelt Coal & Coke Co.
Reopened x

NEW LOCATION.....

DRILL DEEPER.....

ABANDONMENT.....

COMPANY The Manufacturers Light & Heat Co

ADDRESS 800 Union Trust Bldg. Pgh. Pa.

FARM J.V. Blake

TRACT _____ ACRES 63.15 LEASE NO. 26531

WELL (FARM) NO. 1 SERIAL NO. 1743

ELEVATION (SPIRIT-LEVEL) 1040'

QUADRANGLE Littleton

COUNTY Wetzel DISTRICT Proctor

ENGINEER John A. London

ENGINEER'S REGISTRATION NO. 12710

FILE NO. _____ DRAWING NO. Y-13-875

DATE 18 Aug. 1953 SCALE 1"=800'

STATE OF WEST VIRGINIA
DEPARTMENT OF MINES
OIL AND GAS DIVISION
CHARLESTON

WELL LOCATION MAP

FILE NO. Wet-395-Redrill

+ DENOTES LOCATION OF WELL ON UNITED STATES TOPOGRAPHIC MAPS. SCALE 1 TO 62,500. LATITUDE AND LONGITUDE LINES BEING REPRESENTED BY BORDER LINES AS SHOWN.

- DENOTES ONE INCH SPACES ON BORDER LINE OF ORIGINAL TRACING.

0
-1
-2
-3

CLARENCE BLATT

FREEMAN BLAKE

GEORGE FOLAND

W. 1743
EL. 1040'

J. V. BLAKE
63.15A.

RUSSELL GILBERT

CHARLES McCARDLE

J. F. SIMMONS

THOMAS GODDARD

COAL OWNED BY ROOSEVELT COAL & COKE CO.

1.17 1.2 W
334 3.38 Q

ABANDONMENT

COMPANY THE MANUFACTURERS LIGHT AND HEAT CO.
 ADDRESS 800 UNION TRUST BLD'G PITTSBURGH PA.
 FARM J.V. BLAKE
 TRACT ACRES 6315 LEASE NO. 4906
 WELL (FARM) NO. 1 SERIAL NO. 1743
 ELEVATION 1040'
 QUADRANGLE LITTLETON
 COUNTY WETZEL DISTRICT PROCTOR
 ENGINEER *J. L. H. Co.*
 ENGINEER'S REGISTRATION NO.
 FILE NO. DRAWING NO. Y-10-973
 DATE DECEMBER 10-1943 SCALE 1"=800'

STATE OF WEST VIRGINIA
 DEPARTMENT OF MINES
 OIL AND GAS DIVISION
 CHARLESTON
 WELL LOCATION MAP
 FILE NO. ~~WET-461A~~
 now - 395
 + DENOTES LOCATION OF WELL ON UNITED STATES TOPO-
 GRAPHIC MAPS, SCALE 1 TO 62,500, LATITUDE AND LONGITUDE
 LINES BEING REPRESENTED BY BORDER LINES AS SHOWN
 - DENOTES ONE INCH SPACES ON BORDER LINE OF ORIG-
 INAL TRACING

J. V. BLAKE No. 1 (1743) - M. L. & H. Co. - WET-461-A



STATE OF WEST VIRGINIA
DEPARTMENT OF MINES
OIL AND GAS DIVISION

Littleton

WELL RECORD

Permit No. WET-395-Redrill

Oil or Gas Well Stop
(KIND)

Company <u>THE MANUFACTURERS LIGHT AND HEAT COMPANY</u>	Casing and Tubing	Used in Drilling	Left in Well	Packers
Address <u>800 UNION TRUST BLDG., PGH., PENNA.</u>				
Farm <u>J.V.Blake</u> Acres <u>63</u>	Size			
Location (waters) _____	16			Kind of Packer _____
Well No. <u>1743</u> Elev. <u>1040'</u>	13		<u>172'2"</u>	
District <u>Proctor</u> County <u>Wetzel</u>	10		<u>1068'0"</u>	Size of _____
The surface of tract is owned in fee by _____	8 7/8 <u>7</u>		<u>1461'0"</u>	Depth set _____
Address _____	6 5/8		<u>1823'0"</u>	Perf. top _____
Mineral rights are owned by _____	5 3/16			Perf. bottom _____
Address _____	3			Perf. top _____
Drilling commenced <u>November 1, 1952</u>	2			Perf. bottom _____
Drilling completed <u>March 2, 1955</u>	Liners Used			
Date Shot _____ From _____ To _____				
With _____				
Open Flow <u>2 /10ths Water in 1/8</u> Inch				
<u>/10ths Merc. in</u> Inch				
Volume <u>.173</u> Cu. Ft.				
Rock Pressure _____ lbs. _____ hrs.				
Oil _____ bbls., 1st 24 hrs.				
Fresh water _____ feet _____ feet				
Salt water _____ feet _____ feet				

CASING CEMENTED _____ SIZE _____ No. Ft. _____ Date _____

COAL WAS ENCOUNTERED AT _____ FEET _____ INCHES

_____ FEET _____ INCHES _____ FEET _____ INCHES

_____ FEET _____ INCHES _____ FEET _____ INCHES

Formation	Color	Hard or Soft	Top	Bottom	Oil, Gas or Water	Depth Found	Remarks
✓ Top of Maxton Sand			1825		Schlumberger	Measurement	
Bottom of Maxton Sand				1862			
Show of Gas				1845	5 1/2" Delivery	String set at 1809'	
Lead Plug set at				1862			
Total Depth				1862	10-3/4 casing cemented with 415 bags cement		
					7" casing cemented with 400 bags cement		
					5 1/2" casing cemented with 200 bags cement		
					3560 bags cement used to fill cave hole		

30

STATE OF WEST VIRGINIA
DEPARTMENT OF MINES
OIL AND GAS DIVISION

911

WELL RECORD

Permit No. 461-A Drilled in 1912

Oil or Gas Well Gas
(KIND)

Company The Manufacturers Light & Heat Company
 Address 800 Union Trust Bldg., Pittsburgh, Pa.
 Farm J. V. Blake Acres 68
 Location (waters) _____
 Well No. 1-1743 Elev. 1039 ft.
 District Proctor County Netzel
 The surface of tract is owned in fee by Ogal V. Blake
 Address Bebes, W. Va.
 Mineral rights are owned by The Mfrs Light & Heat Co.
800 Union Trust Bldg. Address Pittsburgh, Pa.
 Drilling commenced 11/7/12
 Drilling completed 1/31/13
 Date Shot _____ From _____ To _____
 With _____
 Open Flow 57 /10ths Water in _____ 2 _____ Inch
5 /10ths Merc. in _____ 2 _____ Inch
 Volume _____ Cu. Ft.
 Rock Pressure 187 lbs. 3 48 hrs.
 Oil _____ bbls., 1st 24 hrs.
 Fresh water _____ feet _____ feet
 Salt water _____ feet _____ feet

Casing and Tubing	Used in Drilling	Left in Well	Packers
Size			
16			Kind of Packer
18	161'		?
10	1186'		Size of
8 1/4	1110'	1110'	Depth set
6 1/2	1625	1625'	Perf. top
5 3/16			Perf. bottom
3			Perf. top
2			Perf. bottom
Liners Used			

CASING CEMENTED _____ SIZE _____ No. Ft. _____ Date _____
 COAL WAS ENCOUNTERED AT 100 FEET ? INCHES
730 FEET 60 INCHES 826 FEET 84 INCHES
1255 FEET 60 INCHES _____ FEET _____ INCHES

Formation	Color	Hard or Soft	Top	Bottom	Oil, Gas or Water	Depth Found	Remarks
Waynesburg Coal				400			
Mapletown Coal			730	735			
Pittsburgh Coal			826	833			
Lime			833	875			
Slate			875	880			
Sand			880	900			
Lime			900	925			
Sand			925	950			
Lime			950	965			
Sand			965	985			
Lime			985	1008			
Red Rock			1008	1028			
Lime			1028	1040			
Slate			1040	1050			
Red Rock			1050	1067			
Slate			1067	1110			
Red Rock			1110	1125			
Lime			1125	1140			
Slate			1140	1150			
Lime			1150	1170			
Little Dunkard			1170	1207			
Red Rock			1207	1230			
Sand			1230	1240			
Slate			1240	1255			
Coal			1255	1260			
Big Dunkard			1260	1280			
Slate			1280	1300			
Red Rock			1300	1310			
Sand			1310	1330			
Slate			1330	1345			
Sand			1345	1360			
Slate			1360	1385			
Gas Sand			1385	1435			
Slate			1435	1455			
Sand			1455	1475			
Slate			1475	1485			
Sand			1485	1500			
Slate & Shells			1500	1555			
Salt Sand			1555	1600	Water at 1560'		
Slate & Lime			1600	1630			
Slate			1630	1690			

DEC 1943
WEST VIRGINIA
DEPARTMENT OF MINES

Formation	Color	Hard or Soft	Top	Bottom	Oil, Gas or Water	Depth Found	Remarks
Salt Sand	<i>salt</i>		1690	1745			
Slate			1745	1805			
Mason Sand			1805	1837	Gas at	1830 ft.	
Slate			1837	1861			
Total depth				1861			

Date December 6th, 1943

APPROVED THE MANUFACTURERS LIGHT & HEAT CO., Owner

By *Harry H. Fowler*
 Land Dept. (Title) Office Mgr.