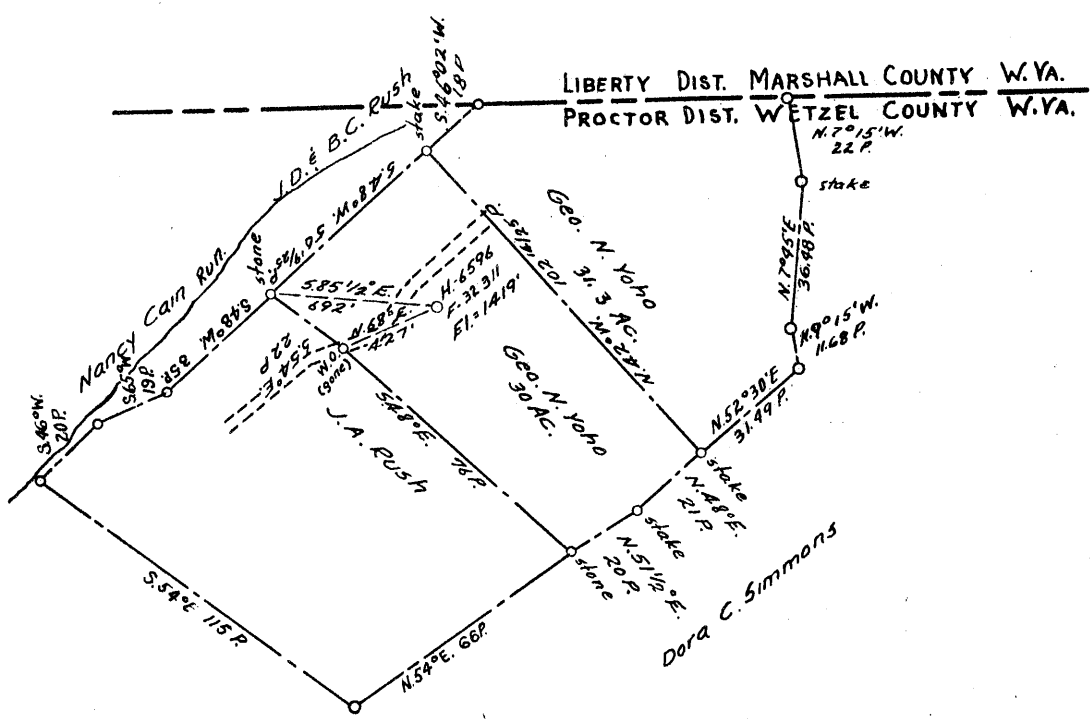


2.19 S  
4.36 W



COAL OWNED BY \_\_\_\_\_  
Clean out

NEW LOCATION...   
DRILL DEEPER...   
ABANDONMENT...

COMPANY The Manufacturers Light & Heat Co.  
 ADDRESS 800 Union Trust Bldg. Pgh. Pa.  
 FARM George N. Yoho  
 TRACT \_\_\_\_\_ ACRES 30 LEASE No. 26393  
 WELL (FARM) No. 1 SERIAL No. F-32311  
 ELEVATION (SPIRIT LEVEL) 1419'  
 QUADRANGLE Littleton  
 COUNTY Wetzel DISTRICT Proctor  
 ENGINEER Thomas E. Tugin - S.M.  
 ENGINEER'S REGISTRATION No. 1503  
 FILE No. \_\_\_\_\_ DRAWING No. Y-15-287  
 DATE 3 Aug. 1955 SCALE 1" = 800'

STATE OF WEST VIRGINIA  
 DEPARTMENT OF MINES  
 OIL AND GAS DIVISION  
 CHARLESTON

### WELL LOCATION MAP

FILE No. Wet-418-Redrill

+ DENOTES LOCATION OF WELL ON UNITED STATES TOPOGRAPHIC MAPS, SCALE 1 TO 62,500, LATITUDE AND LONGITUDE LINES BEING REPRESENTED BY BORDER LINES AS SHOWN.

- DENOTES ONE INCH SPACES ON BORDER LINE OF ORIGINAL TRACING.

9-0 36



STATE OF WEST VIRGINIA  
DEPARTMENT OF MINES  
OIL AND GAS DIVISION

Quadrangle Rixleton

WELL RECORD

Permit No. WET-418

Oil or Gas Well Gas  
(KIND)

Company THE MANUFACTURERS LIGHT AND HEAT COMPANY  
Address 800 UNION TRUST BUILDING, PGH., PA.  
Farm George N. Yoho Acres 30  
Location (waters) \_\_\_\_\_  
Well No. 4347 (F-32311) Elev. 1419'  
District Proctor County Wetzel  
The surface of tract is owned in fee by \_\_\_\_\_  
Address \_\_\_\_\_  
Mineral rights are owned by \_\_\_\_\_  
Address \_\_\_\_\_  
Drilling commenced Sept. 28, 1955  
Drilling completed Dec. 20, 1955  
Date Shot \_\_\_\_\_ From \_\_\_\_\_ To \_\_\_\_\_  
With \_\_\_\_\_  
Open Flow 0.010ths Water in 3/8" Inch  
\_\_\_\_\_ /10ths Merc. in \_\_\_\_\_ Inch  
Volume 0.000 Cu. Ft.  
Rock Pressure \_\_\_\_\_ lbs. \_\_\_\_\_ hrs.  
Oil \_\_\_\_\_ bbls., 1st 24 hrs.  
Fresh water \_\_\_\_\_ feet \_\_\_\_\_ feet  
Salt water \_\_\_\_\_ feet \_\_\_\_\_ feet

Casing and Tubing	Used in Drilling	Left in Well	Packers
Size			Kind of Packer
16			
13			
10		1217' 4"	Size of
8 1/4		1564' 7"	
7"		2089' 10"	Depth set
5 3/8" 4"		2285' 3"	
3			Perf. top
2			Perf. bottom
Liners Used			Perf. top
			Perf. bottom

CASING CEMENTED \_\_\_\_\_ SIZE \_\_\_\_\_ No. Ft. \_\_\_\_\_ Date \_\_\_\_\_

COAL WAS ENCOUNTERED AT \_\_\_\_\_ FEET \_\_\_\_\_ INCHES  
\_\_\_\_\_ FEET \_\_\_\_\_ INCHES \_\_\_\_\_ FEET \_\_\_\_\_ INCHES  
\_\_\_\_\_ FEET \_\_\_\_\_ INCHES \_\_\_\_\_ FEET \_\_\_\_\_ INCHES

Formation	Color	Hard or Soft	Top	Bottom	Oil, Gas or Water	Depth Found	Remarks
Cleaned out to Filled with cement Total Depth Maxton Sand			2200	2317 2250 2250 2233	Schlumberger Measurement		10 3/4" casing Point 1207' 4". Cemented with 300 bag cement and 10 bag Gel. No. return of Cement but return of Gel. to surface.  8 5/8" Casing Point 1551' 11". Cemented with 300 bag cement and 10 bag of gel. No return to surface.  7" Casing Point 2073' 7". Cemented with 180 bag of cement and 2 bag of Gel. Good return to surface.  4 1/2" Tubing Point 2265' 1". Cemented with 225 bags cement and 1 bag Gel. Good return to surface.  Centralizers set at following depths 1 - 2200      5 - 1000 2 - 2000      6 - 500 3 - 1700      7 - 100 4 - 1400  Perforated 12/20/55. Shaped Charge 2 shots per foot from 2233 to 2210.

