

C145WP

225

COAL OWNED BY _____

RECOMMENDATION FOR STORAGE

NEW LOCATION

DRILL DEEPER

ABANDONMENT

COMPANY THE MANUFACTURERS LIGHT & HEAT CO.

ADDRESS 800 UNION TRUST BLDG. PGH PA.

FARM HERBERT SIVERT

TRACT _____ ACRES 17 LEASE No. 26722

WELL (FARM) No. 1 SERIAL No. F-15872

ELEVATION (SPIRIT LEVEL) 1270.2'

QUADRANGLE LITTLETON NC

COUNTY WETZEL DISTRICT PROCTOR

ENGINEER Robert M. Neill

ENGINEER'S REGISTRATION NO. 361 E

FILE No. _____ DRAWING No. Y-15-290

DATE 9 AUGUST 1955 SCALE 1" = 800'

STATE OF WEST VIRGINIA
DEPARTMENT OF MINES
OIL AND GAS DIVISION
CHARLESTON

WELL LOCATION MAP

FILE No. Wet-420-Redrill

+ DENOTES LOCATION OF WELL ON UNITED STATES TOPOGRAPHIC MAPS, SCALE 1 TO 62,500, LATITUDE AND LONGITUDE LINES BEING REPRESENTED BY BORDER LINES AS SHOWN.

— DENOTES ONE INCH SPACES ON BORDER LINE OF ORIGINAL TRACING.

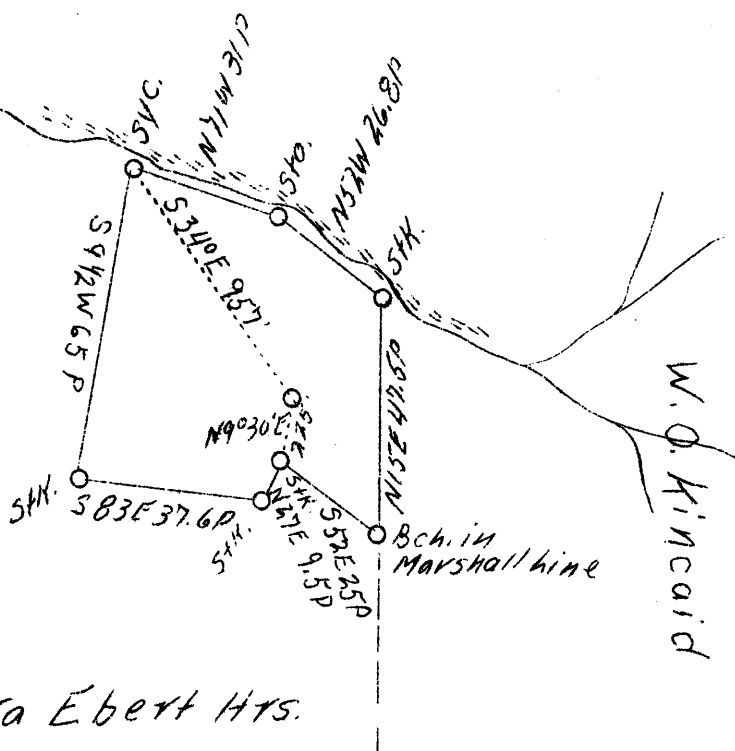
LATITUDE 39°45'

LONGITUDE 80°35'

Robert Simmons Hrs.



Harry Ebert



Barbra Ebert Hrs.

W - 4.5
S - 2.98

New location

Company	Busch & Ferrell
Address	Grantsville, W. Va.
Farm	Sivert Hrs.
Tract	Lot G
Acres	17
Well (Farm) No.	1
Elevation (S.L.)	1270
Quadrangle	Littleton NC
County	Wetzel
District	Proctor
Engineer	Bruce Ferrell, Jr.
Date	May 25, 1939
Scale	40 poles - 1"

STATE OF WEST VIRGINIA
 Department of Mines
 OIL & GAS DIVISION
 Charleston

WELL LOCATION MAP

File No. Wet-225 → 420

x Denotes location of well on U. S. Topographic Maps, scale 1 to 62,500, latitude and longitude lines being represented by border lines as shown.

- Denotes one inch spaces on border line of original tracing.

WEST VIRGINIA DEPARTMENT OF MINES
OIL & GAS DIVISION
W E L L R E C O R D

Permit No. Wet-225
Littleton Quad.

→ 420

Gas Well

Company J. H. Farrell
Address Grantsville, W. Va.
Farm Sivert Hrs. ACRES 17
Location Lynn Camp
District Proctor - W Metzel County
Surface & Mineral Sivert Hrs., Parkersburg, W. Va.
Commenced March 22, 1939
Completed April 18, 1939 *911270'*
Shot Not shot
Open Flow 70/10ths Merc. in 2 inch
Volume 1,312,000 c.f.
Rock Pressure 240 lbs. - hrs.
Fresh Water 240
Salt Water 1860

CASING & TUBING
10 335 None
8-1/4 1540 None
5-3/16 2015 2015

Coal at 1055

Clay	yl	s	0	12	Sand	dk	s	1960	1970	
Sand	yl	s	12	70	Lime	wh	h	1970	1990	
Slate	wh	s	70	100	Sand	dk	s	1990	2005	
Red Rock	yl	s	100	120	Slate	bk	h	2005	2010	
Sand	yl	s	120	260	Sand <i>Mudstone</i>	bk	s	2010	2040	Gas 2050-2060
Lime	wh	h	260	280						
Slate	bk	s	280	290	Sand	wh	s	2040	2060	
Red Rock	rd	s	290	300	Total Depth				2060	
Slate&Shells		s	300	350						
Slate	wh	s	350	390						
Lime Shells		s	390	440						
Red Rock	rd	s	440	450						
Slate	wh	s	450	510						
Lime	h		510	520						
White Slate		s	520	590						
Red Rock	rd	s	590	600						
Slate Shells	wh		600	650						
Lime	wh	s	650	775						
Red Rock	rd	s	775	785						
Slate	wh	s	785	800						
Lime	wh	h	800	945						
✓ Mt. Coal	bk	s	945	948						
Slate	wh	h	948	975						
Lime	wh	h	975	1055						
✓ P. Coal	bk	s	1055	1058						
Slate	wh		1058	1068						
Lime	wh	s	1068	1083						
Red Rock	rd	s	1083	1100						
Sand	wh	s	1100	1125						
Slate	bk	h	1125	1135						
Lime	wh	h	1135	1155						
Red Rock	rd	s	1155	1240						
Lime	wh	s	1240	1250						
Slate	bk	s	1250	1300						
Lime	wh	h	1300	1310						
Slate	bk	h	1310	1330						
Lime	wh	s	1330	1375						
Sand	yl	s	1375	1405						
Slate	bk	h	1405	1410						
Lime&Slate	h		1410	1535						
Red Rock	rd	s	1535	1540						
Lime	wh	h	1540	1560						
Slate	bk	s	1550	1590						
Sand	wh	s	1590	1600						
Slate&Lime	h		1600	1850						
✓ Sand <i>1st set</i>	dk	h	1850	1865	W 1860					
Sand	wh	s	1865	1875						
Lime	wh	h	1875	1900						
Slate	bk	h	1900	1940						
Sand	dk	s	1940	1955						
Shale	bn	s	1955	1960						

1270
1055
215