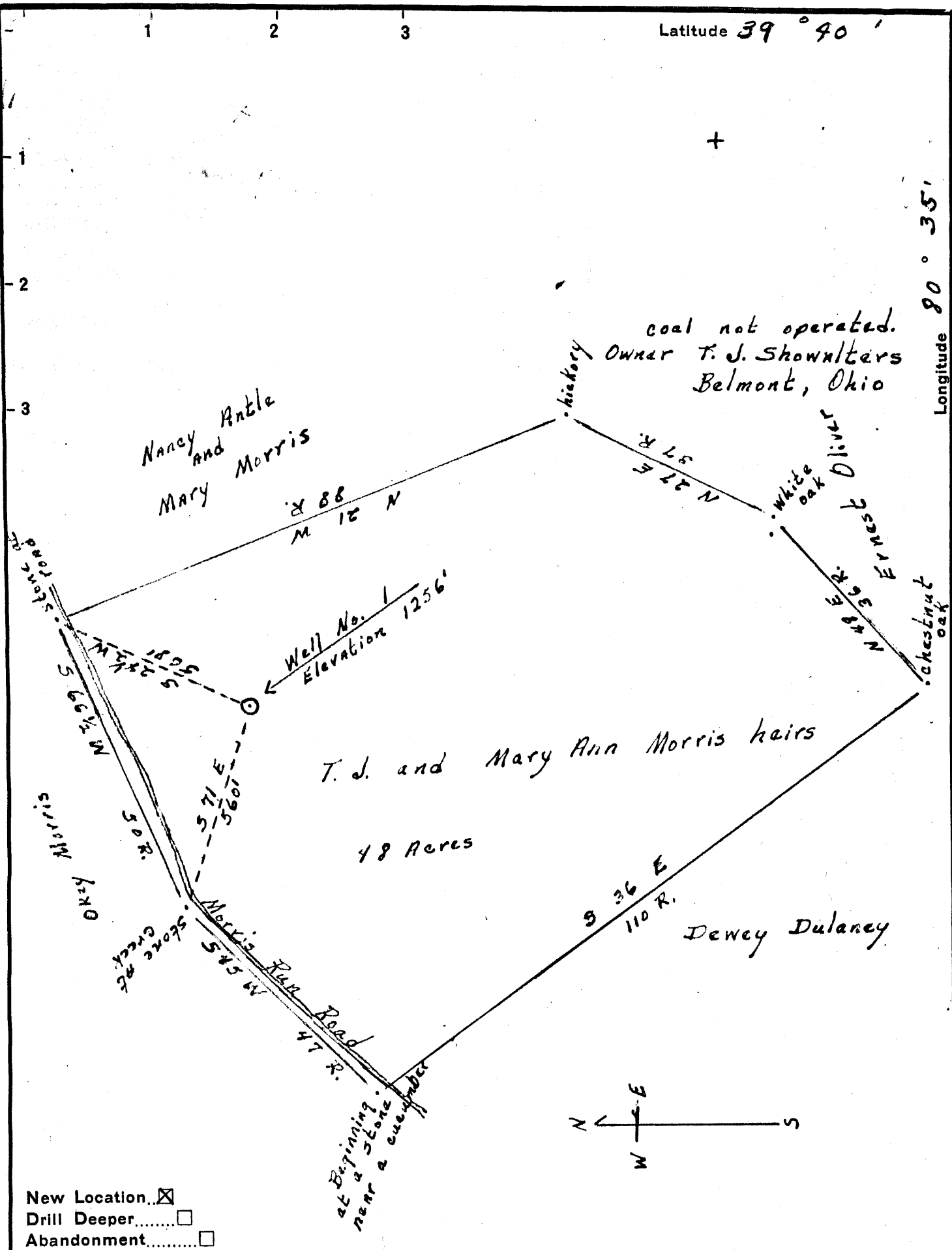


Latitude 39° 40'

Longitude 80° 35'



New Location   
 Drill Deeper   
 Abandonment

Company Roy Guthrie  
 Address Charleston, W. Va.  
 Farm T.J. and Mary Morris Heirs  
 Tract One Acres 48 Lease No. \_\_\_\_\_  
 Well (Farm) No. 1 Serial No. \_\_\_\_\_  
 Elevation (Spirit Level) 1256'  
 Quadrangle Littleton  
 County Wetzel District Center  
 Engineer J.M. Cochran  
 Engineer's Registration No. Co. Switzer  
 File No. \_\_\_\_\_ Drawing No. \_\_\_\_\_  
 Date 8-10-1955 Scale 1 inch = 330'

STATE OF WEST VIRGINIA  
 DEPARTMENT OF MINES  
 OIL AND GAS DIVISION  
 CHARLESTON

**WELL LOCATION MAP**  
 FILE NO. Wet-422

+ Denotes location of well on United States Topographic Maps, scale 1 to 62,500, latitude and longitude lines being represented by border lines as shown.  
 - Denotes one inch spaces on border line of original tracing.