

COAL OWNED BY M. A. Hanna Coal Company

NEW LOCATION.....  
 DRILL DEEPER.....  
 ABANDONMENT..... *issued 9-19-70*

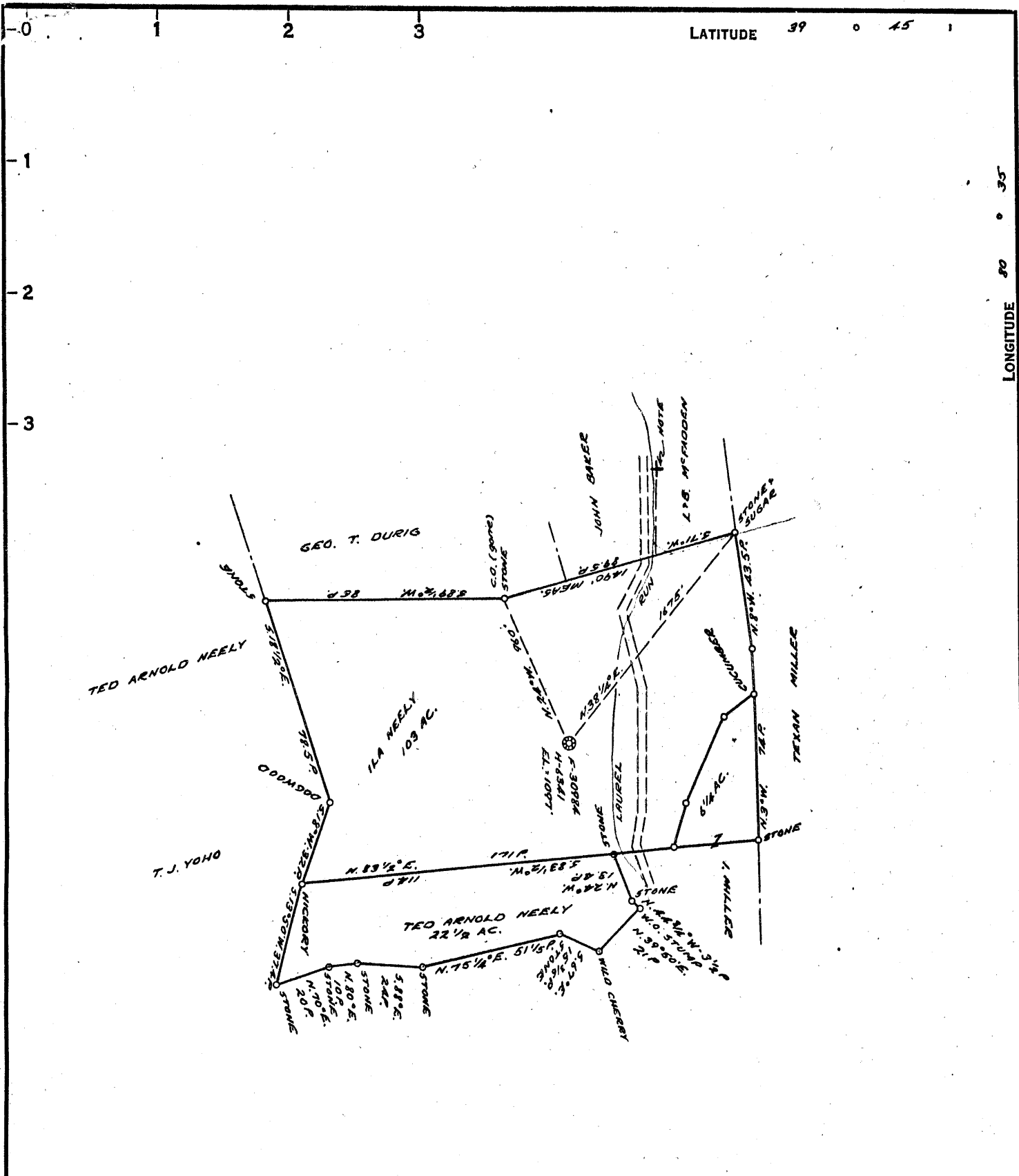
COMPANY THE MANUFACTURERS LIGHT & HEAT CO.  
 ADDRESS 800 UNION TRUST BLDG. PSH. PA.  
 FARM QA  
ILA & NEELY  
 TRACT \_\_\_\_\_ ACRES 103 (125.5) LEASE NO. 2640  
L-4882 N-6341  
 WELL (FARM) No. 1 SERIAL No. F-3098A  
 ELEVATION (SPIRIT LEVEL) 1097'  
 QUADRANGLE LITTLETON NC  
 COUNTY WETZEL DISTRICT CENTER  
 ENGINEER Thomas F. King  
 ENGINEER'S REGISTRATION No. 2113  
 FILE No. \_\_\_\_\_ DRAWING No. Y 14 940  
 DATE 8 NOVEMBER 1955 SCALE 1" = 800'

STATE OF WEST VIRGINIA  
 DEPARTMENT OF MINES  
 OIL AND GAS DIVISION  
 CHARLESTON

WELL LOCATION MAP

FILE No. Wet-425-P

+ DENOTES LOCATION OF WELL ON UNITED STATES TOPOGRAPHIC MAPS SCALE 1" = 62,500' LATITUDE AND LONGITUDE LINES BEING REPRESENTED BY DOTTED LINES AS SHOWN  
 - DENOTES ONE INCH SPACES ON BORDER LINE OF ORIGINAL TRACING.



COAL OWNED BY M. A. Hanna Coal Company  
 RECONSTRUCTION

NEW LOCATION.....   
 DRILL DEEPER.....   
 ABANDONMENT.....

COMPANY THE MANUFACTURERS LIGHT & HEAT CO.  
 ADDRESS 800 UNION TRUST BLDG. PCH. PA.  
 FARM ILA NEELY  
 TRACT            ACRES 103 (125.5) LEASE NO. 26420  
 WELL (FARM) No. 1 SERIAL No. H-6341 F-30984  
 ELEVATION (SPIRIT LEVEL) 1097'  
 QUADRANGLE LITTLETON  
 COUNTY WETZEL DISTRICT CENTER  
 ENGINEER Thomas E. Virgin - J.M.  
 ENGINEER'S REGISTRATION No. 1503  
 FILE No.            DRAWING No. V-15-320  
 DATE 8 NOVEMBER 1955 SCALE 1" = 800'

STATE OF WEST VIRGINIA  
 DEPARTMENT OF MINES  
 OIL AND GAS DIVISION  
 CHARLESTON

### WELL LOCATION MAP

FILE No. Wet-425

+ DENOTES LOCATION OF WELL ON UNITED STATES TOPOGRAPHIC MAPS. SCALE 1 TO 62,500. LATITUDE AND LONGITUDE LINES BEING REPRESENTED BY BORDER LINES AS SHOWN.

— DENOTES ONE INCH SPACES ON BORDER LINE OF ORIGINAL TRACING.



STATE OF WEST VIRGINIA  
DEPARTMENT OF MINES  
OIL AND GAS DIVISION

Quadrangle Littleton

Permit No. Wet 425

WELL RECORD

Oil or Gas Well Storage Gas  
(KIND)

Company THE MANUFACTURERS LIGHT AND HEAT COMPANY  
Address 800 UNION TRUST BUILDING, PITTSBURGH, PA.  
Farm I. & A. Neeley Acres 125 1/2  
Location (waters) \_\_\_\_\_  
Well No. (F30984) L-4382 Elev. 1097'  
District Center County Wetzel W. Va.  
The surface of tract is owned in fee by \_\_\_\_\_  
Address \_\_\_\_\_  
Mineral rights are owned by \_\_\_\_\_  
Address \_\_\_\_\_  
Drilling commenced May 4, 1956  
Drilling completed July 7, 1956  
Date Shot \_\_\_\_\_ From \_\_\_\_\_ To \_\_\_\_\_  
With \_\_\_\_\_

Casing and Tubing	Used in Drilling	Left in Well	Packers
Size			Kind of Packer
16		80'8"	
13		945'6"	Size of
10		1361'6"	
8 3/4		1924'8"	Depth set
6 3/4			
5 3/16			
3			Perf. top
2			Perf. bottom
Liners Used			Perf. top
			Perf. bottom

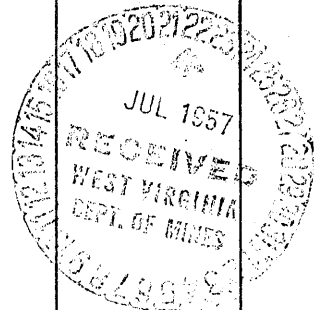
Open Flow \_\_\_\_\_ /10ths Water in \_\_\_\_\_ Inch  
\_\_\_\_\_ /10ths Merc. in \_\_\_\_\_ Inch  
Volume \_\_\_\_\_ Cu. Ft.  
Rock Pressure \_\_\_\_\_ lbs. \_\_\_\_\_ hrs.  
Oil \_\_\_\_\_ bbls., 1st 24 hrs.  
Fresh water \_\_\_\_\_ feet \_\_\_\_\_ feet  
Salt water \_\_\_\_\_ feet \_\_\_\_\_ feet

CASING CEMENTED \_\_\_\_\_ SIZE \_\_\_\_\_ No. Ft. \_\_\_\_\_ Date \_\_\_\_\_

COAL WAS ENCOUNTERED AT \_\_\_\_\_ FEET \_\_\_\_\_ INCHES  
\_\_\_\_\_ FEET \_\_\_\_\_ INCHES \_\_\_\_\_ FEET \_\_\_\_\_ INCHES  
\_\_\_\_\_ FEET \_\_\_\_\_ INCHES \_\_\_\_\_ FEET \_\_\_\_\_ INCHES

Formation	Color	Hard or Soft	Top	Bottom	Oil, Gas or Water	Depth Found	Remarks
Clg. out to Stone & Cement			2058	2058			Schlumberger Measurement
8" Lead Plug			2003	2000			Casing point 13" Casing 79'11"
Cement			2000	1960			Not cemented.
Total Depth				1960			
Maxton Sand			1910	1960			Casing point 10 3/4" casing 937/9"
							Cemented with 2 bag gel and 310 bag cement. No return of cement.
							Casing point 8 5/8" casing 1450' Cemented with 1 bag gel and 280 bag cement. No return of cement.
							Casing point 7" casing 1910' Cemented with 200 bag cement. Good return to surface

RECONDITIONED FOR STORAGE ON WORK ORDER NO. 1551-L-992-4



1910  
1097  
- 913  
55  
- 86854