

Latitude 39° 35'

Longitude 80° 35'

0.57 S
3.50 W

N.A. JOLLIFFE OR S.A. HETZEL 43A.

BERR WEST 20A

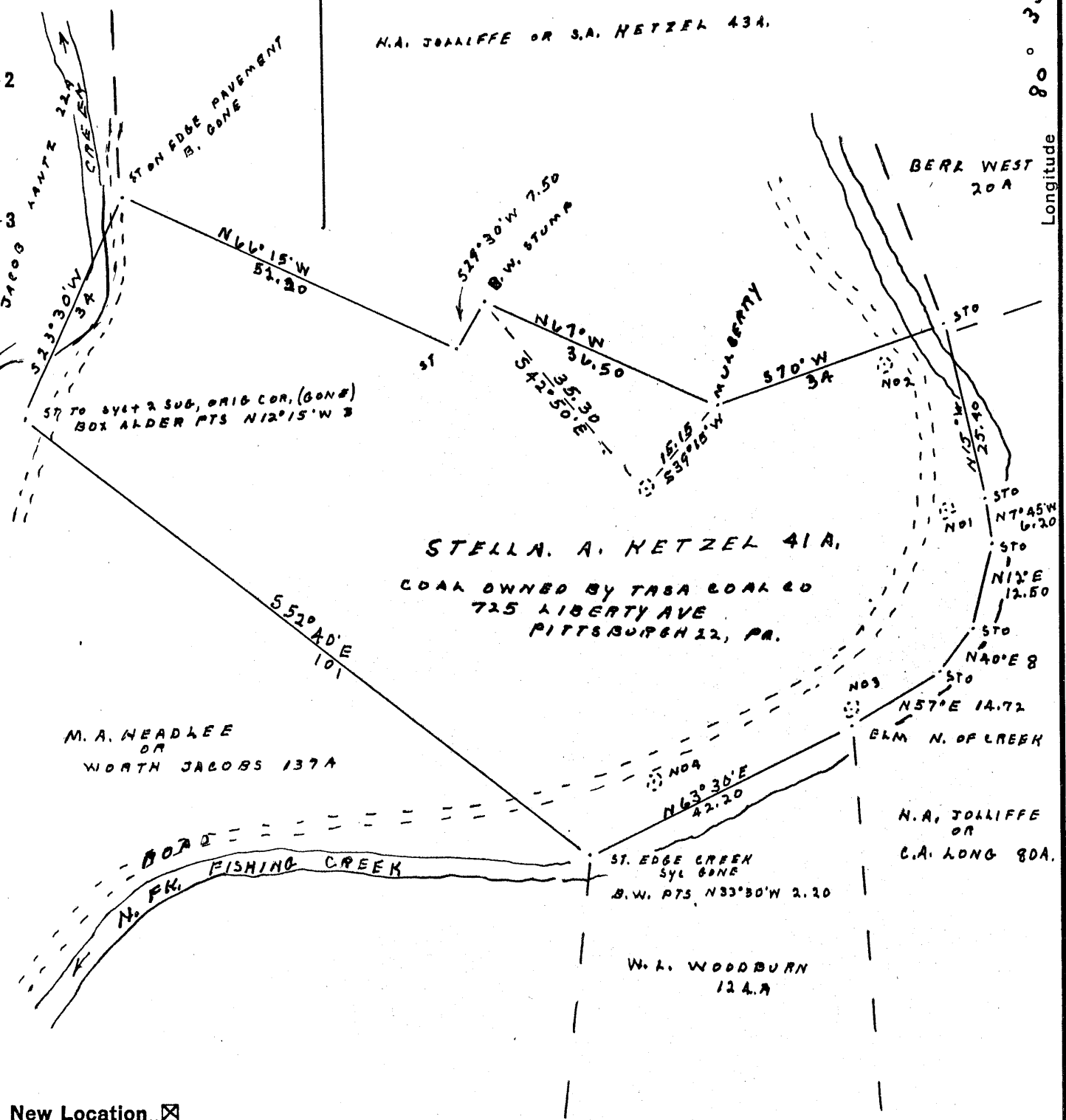
STELLA A. HETZEL 41A,

COAL OWNED BY TASA COAL CO
725 LIBERTY AVE
PITTSBURGH 22, PA.

M. A. HEADLEE
OR
WORTH JACOBS 137A

N.A. JOLLIFFE
OR
C.A. LONG 80A.

W. L. WOODBURN
124A



New Location..
 Drill Deeper.....
 Abandonment.....

A. B. LOWMYER NGT
 Company PINE RUN DEVELOPMENT CO
 Address MIDDLEBORNE W. VA
 Farm STELLA A. HETZEL
 Tract 1 Acres 41 Lease No. _____
 Well (Farm) No. 5 Serial No. _____
 Elevation (Spirit Level) 878.5
 Quadrangle LITTLETON
 County WETZEL District GRANT
 Engineer G. L. McInlira
 Engineer's Registration No. 1187
 File No. _____ Drawing No. _____
 Date 2-11-57 Scale 1" = 20 FOO

STATE OF WEST VIRGINIA
 DEPARTMENT OF MINES
 OIL AND GAS DIVISION
 CHARLESTON

WELL LOCATION MAP
 FILE NO. Wet-444

+ Denotes location of well on United States Topographic Maps, scale 1 to 62,500, latitude and longitude lines being represented by border lines as shown.
 - Denotes one inch spaces on border line of original tracing.

WEST VIRGINIA DEPARTMENT OF MINES
OIL AND GAS DIVISION

WELL RECORD

Sidleton
Permit No. *Net 444*

Oil or Gas Well *Gas*
(Kind)

Company *Pine Run Development Co.*
Address *A. B. Lowther Agt., Middlebourne, W. Va.*
Farm *Stella Ketzal* Acres
Location (waters) *North Fork of Fishing Creek*
Well No. *#5* Elev. *278.5*
District *Grant* County *Wetzel*
The surface of tract is owned in fee by *Stella Ketzal*
Address *Pine Grove, W. Va.*
Mineral rights are owned by *Same (oil & Gas);*
Coal - Taza Coal Co Address *Pgh. Pa.*
Drilling commenced *Feb. 25, 1957*
Drilling completed *March 9, 1957*
Date shot *Not shot* Depth of shot
Open Flow *6* /10ths Water in *1* Inch
1 /10ths Merc. in *1* Inch
Volume *29 M* Cu. Ft.
Rock Pressure *Not taken* lbs. hrs.
Oil *None* bbls., 1st 24 hrs.
Fresh water *85* feet
Salt water *None* feet

Casing and Tubing	Used in Drilling	Left in Well	Packers
Size			Kind of Packer
16			
13			Size of
10			
8 1/4			Depth set
6 5/8	<i>177 ft.</i>	<i>None</i>	
5 3/16	<i>596</i>	<i>596</i>	
3			Perf. top
2			Perf. bottom
Liners Used			Perf. top
			Perf. bottom

CASING CEMENTED *None* SIZE *None* No. FT. *None* Date
COAL WAS ENCOUNTERED AT *245* FEET *12* INCHES
525 FEET *12* INCHES *604* FEET *24* INCHES
None FEET *None* INCHES *None* FEET *None* INCHES

Formation	Color	Hard or Soft	Top	Bottom	Oil Gas or Water	Depth Found	Remarks
Soil			0	20			
Slate & Shel;			20	84			
Sand			84	90			
Slate & Shells			90	160			
Redrock			160	165			
Slate & Shells			165	245			
Coal			245	246			
Slate & Lime			246	525			
Coal			525	526			
Slate			526	535	<i>879</i>		
Lime			535	550	<i>604</i>		
Slate			550	575	<i>275</i>		
Lime			575	590			
Slate			590	604			
Coal <i>208</i>			604	608			
Total Depth			608				

