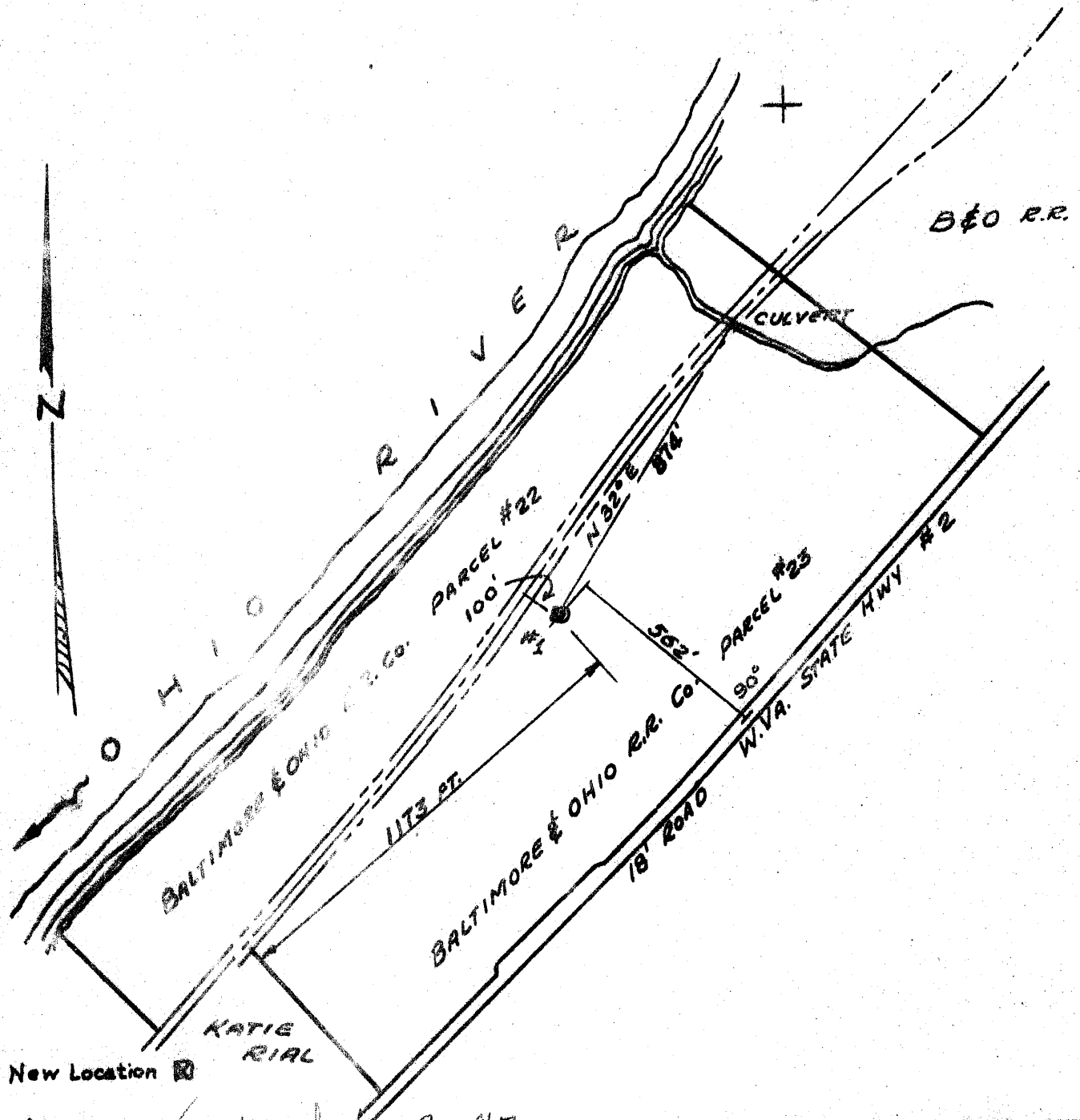


Latitude 39° 40'

Longitude 80° 50'

3.185  
231W



ABANDONED ✓ Issued June 30, 1967

Company	CARL S. MOORE
Address	PROCTOR RT. #2
Farm	BALTIMORE & OHIO R.R.
Tract	23 Acres
Lease No.	
Well (Farm) No.	1
Serial No.	
Elevation (Spirit Level)	622
Quadrangle	NEW MARTINSVILLE
County	WETZEL
District	MAGNOLIA
Engineer	R. A. Warden
Engineer's Registration No.	13920 (OHIO)
File No.	
Drawing No.	
Date	12-8-58
Scale	1" = 400'

STATE OF WEST VIRGINIA  
DEPARTMENT OF MINES  
OIL AND GAS DIVISION  
CHARLESTON

WELL LOCATION MAP  
FILE NO. WET-463-P

+ Denotes location of well on United States Topographic Maps, scale 1 to 62,500, latitude and longitude lines being represented by border lines as shown.

- Denotes one inch spaces on border line of original tracing.



STATE OF WEST VIRGINIA  
DEPARTMENT OF MINES  
OIL AND GAS DIVISION //

Quadrangle Magnolia

Permit No. WET-463

**WELL RECORD**

Oil or Gas Well Dry Hole  
(KIND)

Company <u>Carl S. Moore</u>	Casing and Tubing	Used in Drilling	Left in Well	Packers
Address <u>Route #3,</u>	Size			
Farm <u>Baltimore &amp; Ohio</u> Acres	16			Kind of Packer
Location (waters) <u>Ohio River</u>	13 <u>55</u>		<u>55'</u>	
Well No. <u>One</u> Elev. <u>538</u>	10			Size of
District <u>Magnolia</u> County <u>Wetzel</u>	8 1/4 <u>298</u>		<u>298'</u>	Depth set
The surface of tract is owned in fee by <u>B &amp; O Railroad Co.</u>	6 3/8 <u>881</u>		<u>881'</u>	
Mineral rights are owned by <u>Railroad</u>	5 3/16			Perf. top
Address	3			Perf. bottom
Drilling commenced <u>January 7th. 1959.</u>	2			Perf. top
Drilling completed <u>Not completed</u>	Liners Used			Perf. bottom
Date Shot From To				
With				
Open Flow /10ths Water in. Inch				
/10ths Merc. in. Inch				
Volume Cu. Ft.				
Rock Pressure lbs. hrs.				
Oil bbls., 1st 24 hrs.				
WELL ACIDIZED				
WELL FRACTURED				

CASING CEMENTED \_\_\_\_\_ SIZE \_\_\_\_\_ No. Ft. \_\_\_\_\_ Date \_\_\_\_\_

COAL WAS ENCOUNTERED AT \_\_\_\_\_ FEET \_\_\_\_\_ INCHES  
 \_\_\_\_\_ FEET \_\_\_\_\_ INCHES \_\_\_\_\_ FEET \_\_\_\_\_ INCHES  
 \_\_\_\_\_ FEET \_\_\_\_\_ INCHES \_\_\_\_\_ FEET \_\_\_\_\_ INCHES

RESULT AFTER TREATMENT \_\_\_\_\_

ROCK PRESSURE AFTER TREATMENT \_\_\_\_\_

Fresh Water 57 Feet Salt Water \_\_\_\_\_ Feet

Formation	Color	Hard or Soft	Top	Bottom	Oil, Gas or Water	Depth	Remarks
SOIL		SOFT	0	10		10	
CLAY		"	10	20		10	
Garvel		"	20	55		35	
Lime			55	70		15	
Rock	Pink		70	86		16	
Lime	<del>Hard</del>	Hard	86	138		52	
Rock	Pink		138	150		12	
Lime			150	156		6	
Rock	Red		156	180		24	
Lime			180	190		10	
Shells			190	200		10	
Rock	Red		200	206		6	
Lime		Hard	206	232		26	
Sand			232	270		38	
Rock	Pink		270	290		20	
Lime			290	310		20	
Slate	Pink		310	340		30	
Slate	Red		340	380		40	
Sand			380	392		12	
Slate	Black		392	402		10	
Slate	Gray		402	442		40	Coal Blossom
Lime			442	470		28	6" inches
Slate	Blue		470	480		10	
Rock	Pink		480	490		10	
Lime			490	500		10	
Rock	Pink		500	514		14	
Lime			514	524		10	
Slate	Red		524	536		12	
Lime			536	578		42	

(over)

Formation	Color	Hard or Soft	Top //	Bottom	Oil, Gas or Water	Depth Found	Remarks
Slate	Red		570	620		12	
Lime		Hard	620	650		30	
Slate	Red		650	664		41	
Lime		Hard	664	725		61	
Slate	Pink		725	750		25	
Lime			750	761		11	
Sand			761	775		14	
Slate			775	782		7	
Sand			782	785		3	
Slate			785	787		2	
Sand			787	800		13	
Slate	Gray		800	815		15	
Slate	Pink		815	920		105	
Lime			920	940		20	
Sand			940	952		12	
Lime			952	985		33	
Slate	Black		985	1010		25	
Lime			1010	1016		6	
Slate	Black		1040	1110		70	
Lime			1110	1150		40	
Sand			1150	1200		50	
Slate			1200	1235		35	
Sand		Hard	1235				
<i>Total depth October, 1962</i>				1570	<i>- fishing</i>		

Date March 29th. 1961., 19

APPROVED Carl A. Moore, Owner

By Carl A. Moore  
(Title)