

New Location
 Drill Deeper.....
 Redrill.....
 Abandonment..... issued 7/24/74
Small Oil Drilling Co.

Imperial Oil Company
 Company IMPERIAL OIL COMPANY
 Address CARLTON HOUSE SUITE 504
PITTSBURGH 19 PA. Rockersburg
 Farm PITTSBURGH COAL & LUMBER CO.
J. B. DEWHURST TRACT
 Tract _____ Acres 3108 Lease No. _____
 Well (Farm) No. 13 Serial No. _____
 Elevation (Spirit Level) 931'
 Quadrangle CENTER POINT ~~NE~~ 1-NC
 County WETZEL District GRANT
 Engineer Harry A. Thresher
 Engineer's Registration No. 2470
 File No. _____ Drawing No. _____
 Date APRIL 11, 1960 Scale 1" = 500'

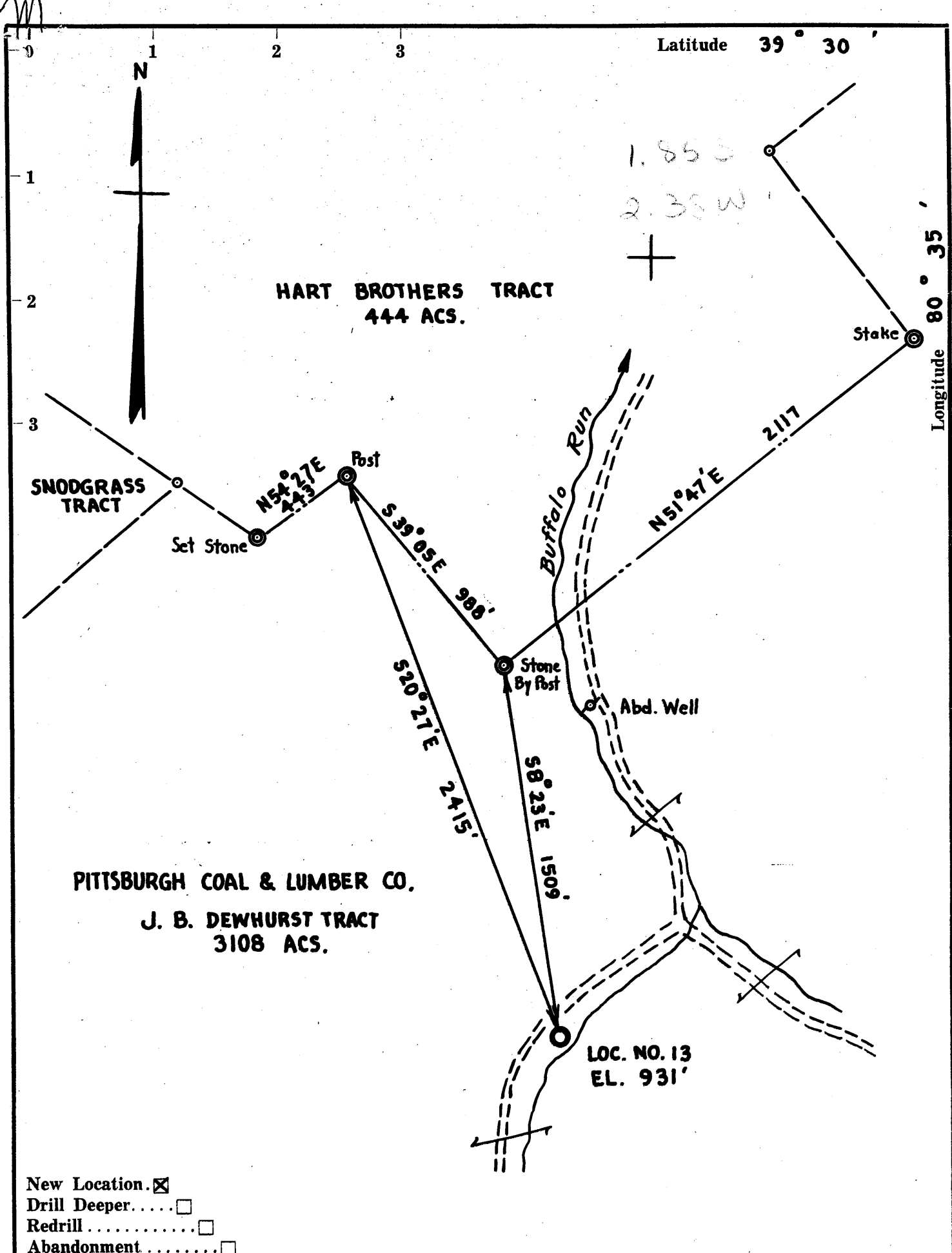
STATE OF WEST VIRGINIA
 DEPARTMENT OF MINES
 OIL AND GAS DIVISION
 CHARLESTON

WELL LOCATION MAP
 FILE NO. WET-480-P

+ Denotes location of well on United States Topographic Maps, scale 1 to 62,500, latitude and longitude lines being represented by border lines as shown.

— Denotes one inch spaces on border line of original tracing.

47-103 AUG 26 1974



- New Location.
- Drill Deeper.....
- Redrill.....
- Abandonment.....

Company	IMPERIAL OIL COMPANY	
Address	CARLTON HOUSE SUITE 504 PITTSBURGH 19 PA.	
Farm	PITTSBURGH COAL & LUMBER CO. J. B. DEWHURST TRACT	
Tract	Acres 3108	Lease No.
Well (Farm) No.	13	Serial No.
Elevation (Spirit Level)	931'	
Quadrangle	CENTER POINT NE 1 ¹ / ₂ NE	
County	WETZEL	District GRANT
Engineer	<i>Henry A. Thrasher</i>	
Engineer's Registration No.	2470	
File No.	Drawing No.	
Date	APRIL 11, 1960	Scale 1" = 500'

STATE OF WEST VIRGINIA
DEPARTMENT OF MINES
OIL AND GAS DIVISION
CHARLESTON

WELL LOCATION MAP
FILE NO. WET-480

+ Denotes location of well on United States Topographic Maps, scale 1 to 62,500, latitude and longitude lines being represented by border lines as shown.

— Denotes one inch spaces on border line of original tracing.



STATE OF WEST VIRGINIA
DEPARTMENT OF MINES
OIL AND GAS DIVISION 15

Quadrangle Centerpoint
Permit No. WET-480

WELL RECORD

Oil or Gas Well Oil
(KIND)

Company IMPERIAL OIL COMPANY
Address 504 Carlton House, Pittsburgh 19, Pa.
Farm J. B. Dewhurst Acres 2200
Location (waters) Buffalo Run
Well No. Thirteen (13) Elev. 931
District Grant County Wetzel
The surface of tract is owned in fee by Same as other wells
Address _____
Mineral rights are owned by Same as other wells
Address _____
Drilling commenced June, 1960
Drilling completed October 26, 1960
Date Shot _____ From _____ To _____
With _____
Open Flow _____ /10ths Water in _____ Inch
_____ /10ths Merc. in _____ Inch
Volume _____ Cu. Ft.
Rock Pressure 130 lbs. Estimated hrs.
Oil _____ bbls., 1st 24 hrs.
WELL ACIDIZED _____
WELL FRACTURED Yes - Berea Sand, Gordon Sand and Fifth Sand

Casing and Tubing	Used in Drilling	Left in Well	Packers
Size			Kind of Packer _____
16			
13 3/8	24'		
10	355'		Size of _____
8 5/8	1268'		
6 3/4			Depth set _____
5 1/2	3148'	3148'	
3			Perf. top _____
2	(approx. 3150'		Perf. bottom _____
Liners Used			Perf. top _____
			Perf. bottom _____

CASING CEMENTED 5 1/2 SIZE No. Ft. 10/28 Date _____
200 sks. Cement - Halliburton Service

COAL WAS ENCOUNTERED AT _____ FEET _____ INCHES
_____ FEET _____ INCHES FEET _____ INCHES
_____ FEET _____ INCHES FEET _____ INCHES

RESULT AFTER TREATMENT 40 barrels oil daily -
ROCK PRESSURE AFTER TREATMENT _____
Fresh Water 35 Feet Salt Water None Feet

Formation	Color	Hard or Soft	Top	Bottom	Oil, Gas or Water	Depth	Remarks
gravel			0	12			
red rock			12	30			
sand			30	80			
slate			80	115			
sand			115	150			
red rock			150	180			
white slate			180	425			
red rock			425	440			
slate			440	485			
lime			485	625			
slate			625	718			
Coal blossom <u>Pbg</u>			718	719			
lime			719	755			
slate & shells			755	830			
red rock			830	835			
sand			835	875			
slate			875	907			
red rock			907	935			
lime			935	970			
red rock			970	1005			
slate			1005	1125			
Little Dunkard			1125	1143			
red rock			1143	1160			
lime			1160	1180			
slate			1180	1259			
Big Dunkard			1259	1288			
slate			1288	1380			

Formation	Color	Hard or Soft	Top 15'	Bottom	Oil, Gas or Water	Depth Found	Remarks
sand			1380	1470			
slate			1470	1550			
broken sand			1550	1610			
slate			1610	1665			
sand			1665	1704			
slate			1704	1774 1777			
sand			1777	1808			
black slate			1808	1872		2008	
sand			1872	1890		931	
pink rock			1890	1974		<u>1077</u>	
slate			1974	1980			
lime L.L.			1980	2000			
slate P.C.			2000	2008			
lime B.L.			2008	2092			
sand B.I.			2092	2250			
slate & shell			2250	2600			
sand			2600	2608	Berea		(oil & gas show)
slate & shells			2608	2821			
sand			2821	2847	Gordon		(oil show)
slate			2847	3124			
sand			3124	3130	Fifth Sand		
sand			3130	3138			
sandy shale			3138	3148			
TOTAL DEPTH				3148			

Date December 15, 1960

APPROVED IMPERIAL OIL COMPANY, Owner

By R. M. Jordan
R. M. Jordan (Title) President