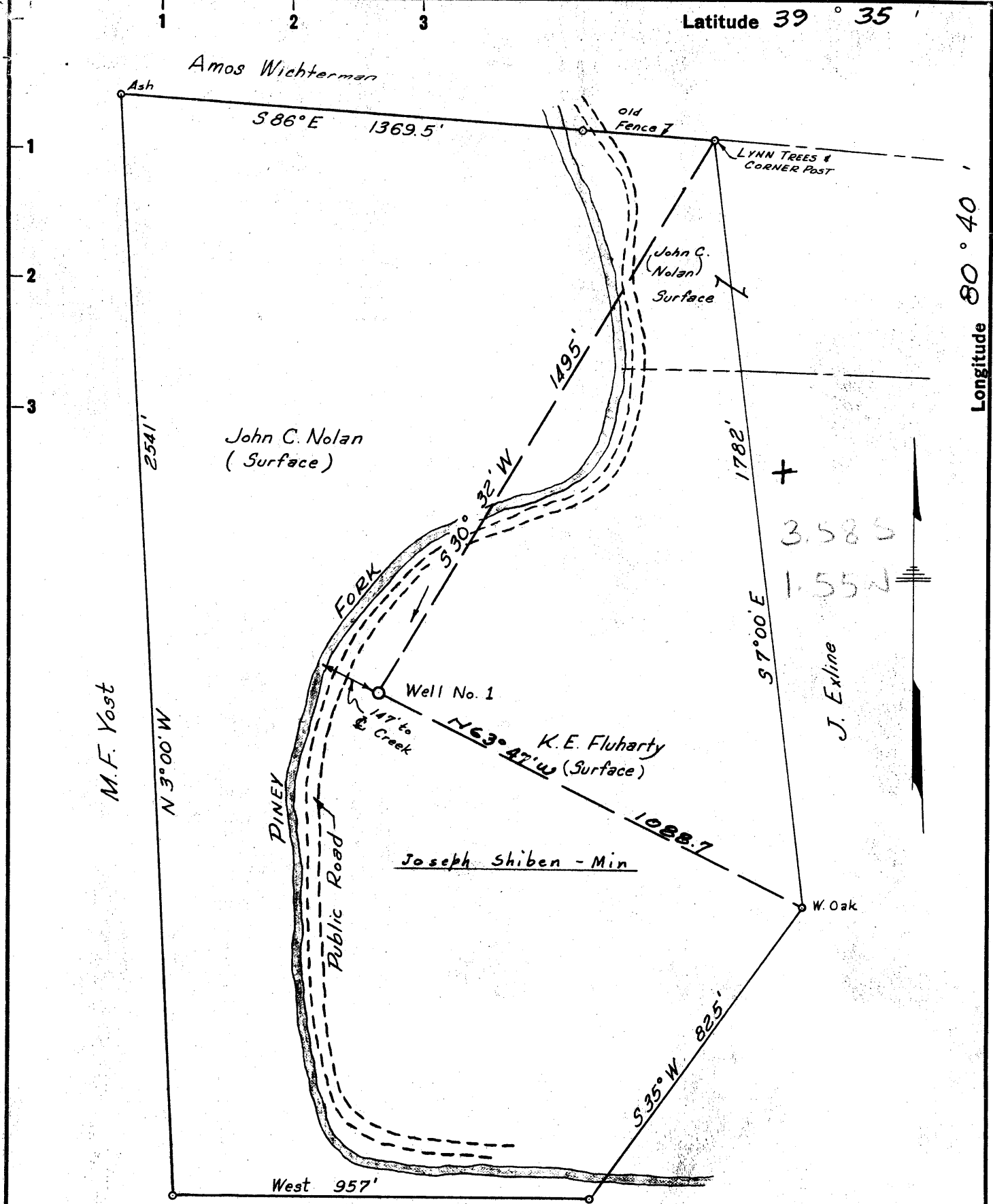


M



Latitude 39 ° 35 '

Longitude 80 ° 40 '

- New Location
- Drill Deeper
- Abandonment

Charles G. Ice

Company UNION CARBIDE OLEFINS Co., % KENNETH R. Gosnell

Address BLDG. 82, ROOM 932, SOUTH CHARLESTON, W.VA.

Farm Joseph Shiben

Tract 2 Acres 76 Lease No. _____

Well (Farm) No. ONE Serial No. 18-11

Elevation (Spirit Level) 747 SW (7)

Quadrangle LITTLETON ~~100~~

County WETZEL District GREEN

Engineer L.G. Merrill

Engineer's Registration No. 152

File No. _____ Drawing No. _____

Date MAR 1, 1961 Scale 1" = 300

STATE OF WEST VIRGINIA
DEPARTMENT OF MINES
OIL AND GAS DIVISION
CHARLESTON

WELL LOCATION MAP

FILE NO. WET-501-D
1-26-62

+ Denotes location of well on United States Topographic Maps, scale 1 to 62,500, latitude and longitude lines being represented by border lines as shown.

- Denotes one inch spaces on border line of original tracing.



STATE OF WEST VIRGINIA
DEPARTMENT OF MINES
OIL AND GAS DIVISION 24

Gas Shows ✓

Quadrangle Littleton

Permit No. WET-501-D

WELL RECORD

Oil or Gas Well Dry
(KIND)

Company Union Carbide Oerins Co.,
Attn. K. R. Gosnell
Address P. O. Box 8004, South Charleston, W. Va.
Farm Joseph Shiben Acres 76
Location (waters) Piney Fork
Well No. 1, Serial No. 18-11 Elev. 747
District Green County Wetzel
The surface of tract is owned in fee by Mr. K. E. Fluharty
Piney Address West Virginia
Mineral rights are owned by Mr. Paul J. Shiben, Adm.
Est. Joseph Shiben Address New Martinsville, W. Va.
Drilling commenced DD- Feb. 16, 1962
Drilling completed DD- Apr. 8, 1962
Date Shot _____ From _____ To _____
With _____
Open Flow BF/10ths Water in _____ Inch
/10ths Merc. in _____ Inch
Volume Injun - Show; Gordon - Show Cu. Ft.
Rock Pressure _____ lbs. _____ hrs.
Oil Show - Injun bbls., 1st 24 hrs.
WELL ACIDIZED _____

Casing and Tubing	Used in Drilling	Left in Well	Packers
Size			Kind of Packer
16	26'	26'	
13	222'	Pulled	
10	988'	Pulled	Size of
8 3/4	1687'	Pulled	
6 3/4			Depth set
5 3/16	1982'	1982'	
3	2718	2718	Perf. top See
2			Perf. bottom Back
Liners Used			Perf. top Page
			Perf. bottom

CASING CEMENTED 5 1/2" SIZE No. Ft. 8/29/61 Date
Cemented with 80 sacks of high Early Cement,
Preceded with 20 sacks of Aquagel.
3 1/2" casing cemented 4/8/62 w/25 sacks 600'
COAL WAS ENCOUNTERED AT _____ FEET _____ INCHES
_____ FEET _____ INCHES _____ FEET _____ INCHES
_____ FEET _____ INCHES _____ FEET _____ INCHES

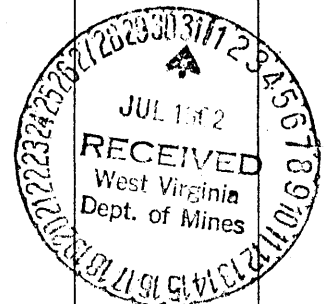
WELL FRACTURED See other side

RESULT AFTER TREATMENT Injun 189 MCF - Cemented (See note reverse side) Gordon 2000 cu. ft.

ROCK PRESSURE AFTER TREATMENT Injun 5 Day RP 280%, Gordon - 2 weeks 15 Psi

Fresh Water 28', 195', 855' Feet Salt Water 1385' Feet 2030'

Formation	Color	Hard or Soft	Top	Bottom	Oil, Gas or Water	Depth	Remarks
Sand & Gravel			0	23			
Slate			23	162	Water	28'	Hole Full
Red Rock			162	174			
Slate			174	193			
Sand			193	215	Water	195'	Hole Full
Slate			215	230			
Gritty Lime			230	251			
Slate			251	253			
Lime			253	262			
Red Rock			262	287			
Lime			287	355			
Lime & Slate			355	504			
Broken Sand			504	551			
Red Rock			551	560			
Lime			560	580			
Sand			580	606			
Slate			606	627			
Red Rock			627	637			
Slate & Shells			637	652			
Sand			652	672			
Lime			672	682			
Red Rock			682	700			
Slate			700	855			
Little							
Dunkard Sand			855	917	Water	855'	1/2 Bailer/Hr.
Slate			917	927			
Pink Rock			927	947			
Slate			947	998			
Pink Rock			998	1003			
Slate & Shells			1003	1080			



Formation	Color	Hard or Soft	Top ²⁴	Bottom	Oil, Gas or Water	Depth Found	Remarks
✓ Big Dunkard Sand			1080	1095			
Slate			1095	1138			
Lime			1138	1194			
Sand			1194	1235			
Slate & Shells			1235	1295			
Sand			1295	1308			
Slate & Shells			1308	1348			
Gritty Lime			1348	1358			
✓ Salt Sand			1358	1523	Water	1385	2 1/2 Bailers/Hr.
Slate & Shells			1523	1620			
✓ Maxton Sand			1627	1643			
Slate			1643	1651			
✓ Little Lime			1651	1661			
✓ Slate			1661	1674			
✓ Big Lime			1674	1740			
✓ Injun Sand			1740	1953	Gas	1837	Show
					Gas	1842-1850	Show
Slate			1953	2002	Oil	1850-1857	Show
					Oil	1865-1901	Show
				TD 2002			
Perforated Injun Sand 8/31/61 with 20 crack jets from 1838-1843 and 20 crack jets from 1888-1893. Could not break down. Reperforated w/bullets - 16 shots 1838-1842.5, 16 shots 1888.5-1892.5. Fractured with 56,000# 20-40 Sand, 500# 12-20 Tuf-Prop, 39,500 gal. water. No results after treatment.							
Ran tracer survey and found channels. Squeeze cemented upper zone with 25 sacks cement. Notched Injun Sand at 1890' w/Big 3" charge.							
Fractured with 27,200 gal. water, 30,000# 20-40 sand. Results after treatment 189 MCF. 5 day RP-280#.							
<u>Record of Drill Deeper</u>							
Slate & Shell			2002	2118	Water	2030	Hole Full
Sand & Shale			2118	2160			
Slate & Shell			2160	2322			
Sand			2322	2329			
Shale			2329	2339			
Sand			2339	2344			
Slate & Shell			2344	2532			
✓ Gordon Stray			2532	2552			
Shale			2552	2564	Gas	2532-2552	28 MCF
✓ Gordon Sand			2564	2578			
Shale			2578	2582			
Sand			2582	2586			
Shale			2586	2592			
Sand			2592	2597			
Shale			2597	2720			
Sand			2720	2725			
Slate & Shell			2725	2907			
				TD 2907			2907 2002 405
Perforated Gordon Sand 2574-2578 16 capsule Jets. Fractured with 20,000 gal. water, 13,500# sand. Results after fracture - 2,000 cubic feet.							
Note: Injun Sand squeeze cemented during drilling deeper due to water break through.							

Date July 23, 1962

APPROVED UNION CARBIDE OLEFINS COMPANY, Owner
 By Kenneth R Gosnell
 Dist. Prod. (Title) Engr.



STATE OF WEST VIRGINIA
DEPARTMENT OF MINES
OIL AND GAS DIVISION **25**

Quadrangle Littleton

Permit No. WET-501

WELL RECORD

Oil or Gas Well Gas
(KIND)

Company Union Carbide Olefins Co.
Attn: K. R. Gosnell
Address P. O. Box 8004 - South Chas., W. Va.
Farm Joseph Shiben Acres 76
Location (waters) Piney Fork
Well No. 1, Serial No. 18-11 Elev. 747
District Green County Wetzel
The surface of tract is owned in fee by Mr. K. E. Fluharty
Piney, West Virginia Address _____
Mineral rights are owned by Mr. Paul J. Shiben, Adm.
estate Joseph Shiben Address New Martinsville, W. Va.
Drilling commenced July 21, 1961
Drilling completed August 24, 1961
Date Shot _____ From _____ To _____
With _____
Open Flow BF /10ths Water in _____ Inch
_____ /10ths Merc. in _____ Inch
Volume Show _____ Cu. Ft.
Rock Pressure _____ lbs. _____ hrs.
Oil Show _____ bbls., 1st 24 hrs.
WELL ACIDIZED _____

Casing and Tubing	Used in Drilling	Left in Well	Packers
Size			Kind of Packer
16	26'	26'	
13	222'	Pulled	
10	988'	Pulled	Size of
8 1/4	1687'	Pulled	
6 1/4			Depth set
5 3/16	1982'	1982'	
3			Perf. top See
2			Perf. bottom Back
Liners Used			Perf. top Page
			Perf. bottom

CASING CEMENTED 5-1/2" SIZE No. Ft. 8-29-61 Date
Cemented with 80 sacks of High Early Cement,
Preceeded with 20 sacks of Aquagel.

COAL WAS ENCOUNTERED AT _____ FEET _____ INCHES
_____ FEET _____ INCHES FEET _____ INCHES
_____ FEET _____ INCHES FEET _____ INCHES

WELL FRACTURED See other side.

RESULT AFTER TREATMENT 189 MCF

ROCK PRESSURE AFTER TREATMENT 5 Day RP 280#.

Fresh Water 28', 195', 855' Feet Salt Water 1385' Feet

Formation	Color	Hard or Soft	Top	Bottom	Oil, Gas or Water	Depth	Remarks
Sand & Gravel			0	23			
Slate			23	162	Water	28'	Hole full.
Red Rock			162	174			
Slate			174	193			
Sand			193	215	Water	195'	Hole full.
Slate			215	230			
Gritty Lime			230	251			
Slate			251	253			
Lime			253	262			
Red Rock			262	287			
Lime			287	355			
Lime & Slate			355	504			
Broken Sand			504	551			
Red Rock			551	560			
Lime			560	580			
Sand			580	606			
Slate			606	627			
Red Rock			627	637			
Slate & Shells			637	652			
Sand			652	672			
Lime			672	682			
Red Rock			682	700			
Slate			700	855			
Little							
Dunkard Sand			855	917	Water	855'	L/2 Bailer/Hr.
Slate			917	927			
Pink Rock			927	947			
Slate			947	998			
Pink Rock			998	1003			
Slate & Shells			1003	1080			
Big Dunkard							
Sand			1080	1095			

Formation	Color	Hard or Soft	Top 25	Bottom	Oil, Gas or Water	Depth Found	Remarks
Slate			1095	1138			
Lime			1138	1194			
Sand			1194	1235			
Slate & Shells			1235	1295			
Sand			1295	1308			
Slate & Shells			1308	1348			
Gritty Lime			1348	1358			
Salt Sand			1358	1523	Water	1385	2-1/2 Bailers/Hr.
Slate & Shells			1523	1620			
Maxton Sand			1627	1643			
Slate			1643	1651			
Little Lime			1651	1661			
Slate			1661	1674			
Big Lime			1674	1740			
Injun Sand			1740	1953	Gas	1837	Show
					Gas	1842-1850	Show
Slate			1953	2002	Oil	1850-1857	Show
					Oil	1865-1901	Show
				TD 2002			
<p>Perforated Injun Sand 8-31-61 with 20 crack jets from 1838-1843 and 20 crack jets from 1888-1893. Could not break down. Reperforated w/bullets - 16 shots 1838.5-1842.5, 16 shots 1888.5-1892.5. Fractured with 56,000# 20-40 Sand, 500# 12-20 Tuf-Prop, 39,500 gal water. No results after treatment.</p> <p>Ran tracer survey and found channels. Squeeze cemented upper zone with 25 sacks cement. Notched Injun Sand at 1890' w/Big 3" charge.</p> <p>Fractured with 27,200 gal water, 30,000# 20-40 sand. Results after treatment 189 MCF. 5 Day RP-280#.</p>							

Date October 30, 19 61

APPROVED Union Carbide Olefins Co. Owner

By Kenneth R. Gosnell
 Kenneth R. Gosnell (Title)
 District Production Engineer
 Natural Resources - Ohio - W. Va.