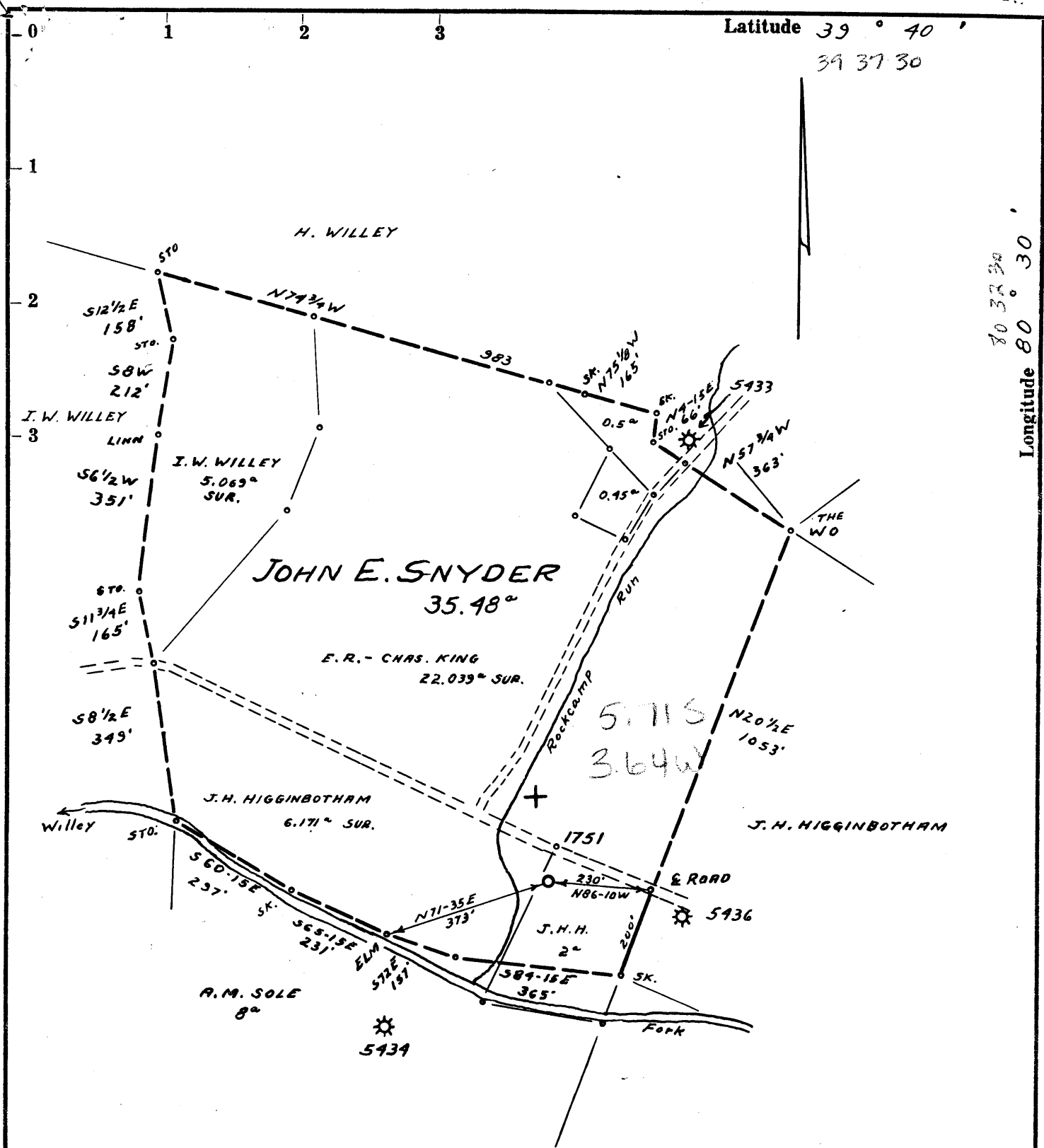


Latitude 39 ° 40 '

39 37 30

Longitude 80 ° 30 ' 30



- Redrill.....
- New Location.
- Drill Deeper.....
- Abandonment.....

PARTIAL PLUG

Company EQUITABLE GAS CO. W.VA. DIV.
 Address PITTSBURGH, PA.
 Farm JOHN E. SNYDER
 Tract _____ Acres 35.48 Lease No. 6285
 Well (Farm) No. _____ Serial No. 1751
 Elevation (Spirit Level) 829'
 Quadrangle LITTLETON SC
 County WETZEL District GRANT
 Engineer JAMES P. DEWINE
 Engineer's Registration No. 1084
 File No. 200/106 Drawing No. _____
 Date 4-25-62 Scale 1" = 300'

STATE OF WEST VIRGINIA
 DEPARTMENT OF MINES
 OIL AND GAS DIVISION
 CHARLESTON

WELL LOCATION MAP
 FILE NO. WET-1143-PP
WET-533-RECONDITION

+ Denotes location of well on United States Topographic Maps, scale 1 to 62,500, latitude and longitude lines being represented by border lines as shown.

— Denotes one inch spaces on border line of original tracing.

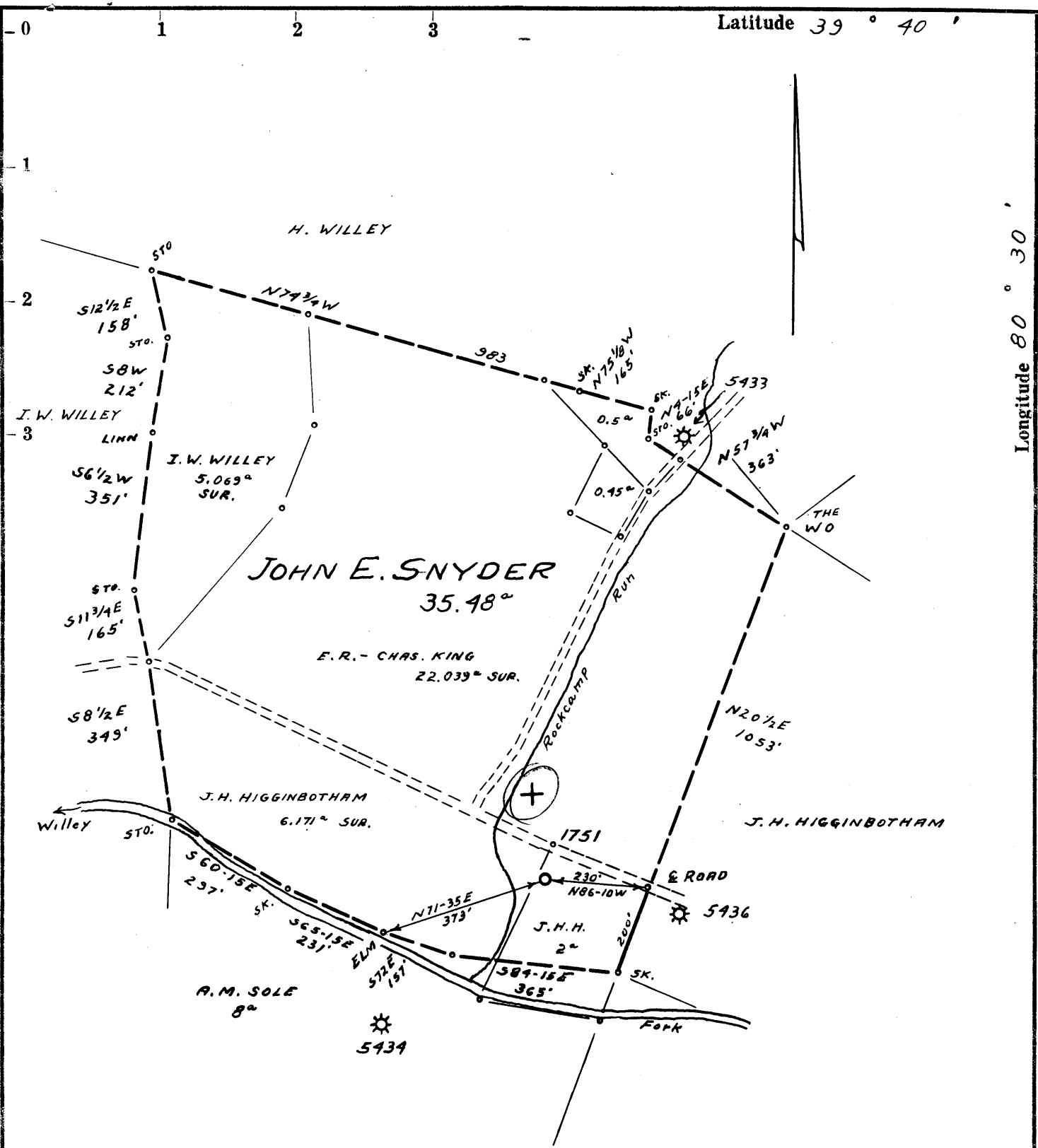
9-0 45

SD

RDM^s

Latitude 39 ° 40 '

Longitude 80 ° 30 '



- Redrill.....
- New Location.
- Drill Deeper.....
- Abandonment.....

MAY 20 1962

PARTIAL PLUG

3.64
 3.7 W
 57 58

Company	EQUITABLE GAS CO. W.VA. DIV.	
Address	PITTSBURGH, PA.	
Farm	JOHN E. SNYDER	
Tract	Acres 35.48	Lease No. 6285
Well (Farm) No.	Serial No. 1751	
Elevation (Spirit Level)	829'	
Quadrangle	LITTLETON SE13	
County	WETZEL District GRANT	
Engineer	<i>Jamaal Deffen</i>	
Engineer's Registration No.	1084	
File No.	200/106	Drawing No.
Date	4-25-62	Scale 1" = 300'

STATE OF WEST VIRGINIA
 DEPARTMENT OF MINES
 OIL AND GAS DIVISION
 CHARLESTON

WELL LOCATION MAP
 FILE NO. WET-1143-PP

+ Denotes location of well on United States Topographic Maps, scale 1 to 62,500, latitude and longitude lines being represented by border lines as shown.
 — Denotes one inch spaces on border line of original tracing.

RDM^s

JOHN E. SNYDER No. 1751 - EQUITABLE GAS CO., W.VA. DIV. - WET-1143-PP



STATE OF WEST VIRGINIA
DEPARTMENT OF MINES
OIL AND GAS DIVISION

Quadrangle Littleton SE 1.4

**PARTIAL PLUG AND RECONDITION
WELL RECORD**

Permit No. WET-533

Oil or Gas Well Gas Storage
(KIND)

Company Equitable Gas Company
Address 420 Blvd. of Allies, Pittsburgh 19, Pa.
Farm J. E. Snider Acres 40
Location (waters) Littleton SE 1.4
Well No. 1751 Elev. 829
District Grant County Wetzel
The surface of tract is owned in fee by J. H. Higginbotham
Address Big Run, West Va.
Mineral rights are owned by Paul Shiben et al; G. B. Myers et al; N.C. Conner, et al, New Martinsville
Address West Va.
Repair Drilling commenced May 7, 1962
Repair Drilling completed Dec. 13, 1962
Date Shot -- From -- To --
With --
Open Flow -- /10ths Water in -- Inch
-- /10ths Merc. in -- Inch
Volume -- Cu. Ft.
Rock Pressure -- lbs. -- hrs.
Oil -- bbls., 1st 24 hrs.
WELL ACIDIZED --
WELL FRACTURED --

Casing and Tubing	Used in Drilling	Left in Well	Packers
Size			Kind of Packer
16			<u>None</u>
13			Size of
10			Depth set
8 3/4	<u>1274</u>	<u>1274</u>	Perf. top
6 3/4	<u>1569</u>	<u>1569</u>	Perf. bottom
5 3/16	<u>1764</u>	<u>1764</u>	Perf. top
3			Perf. bottom
2			
Liners Used			

CASING CEMENTED 5-3/16" No. Ft. -- Date --
Cement 1764' to 1562' - Aquagel 1562' to surface.
COAL WAS ENCOUNTERED AT 520 FEET 60 INCHES
-- FEET -- INCHES -- FEET -- INCHES
-- FEET -- INCHES -- FEET -- INCHES

RESULT AFTER TREATMENT --
ROCK PRESSURE AFTER TREATMENT --
Fresh Water -- Feet -- Salt Water -- Feet --

Formation	Color	Hard or Soft	Top	Bottom	Oil, Gas or Water	Depth	Remarks
✓ Pgh. Coal			520	525			Driller
✓ Murphy Sand			650	704			
✓ Murphy Sand	<u>15GR.</u>		738	804			
✓ E. Dunkard Sand			900	1000			
✓ Gas Sand			1122	1207			
✓ Salt Sand			1258	1287			
✓ Salt Sand			1317	1348			
✓ Salt Sand			1395	1499			
✓ Salt Sand			1525	1560			
✓ Maxton Sand			1668	1693	Gas	1673-80	Temp. Survey
✓ Big Lime			1708	1760	Gas	1716	" "
✓ Big Injun Sand			1766	1819			
✓ Big Injun Sand			1827	1840			
✓ Big Injun Sand			1843	1850	Gas	1788	" "
✓ Big Injun Sand			1860	1883	Gas	1883	" "
✓ Big Injun Sand			1900	1921			
✓ Cleaned Out to Cement			1814	1921			
✓ Completed Total Depth				1814			

Note: Log shown from Gamma Ray Survey except where noted.
Well located in Mobley Gas Storage Pool Area.



Record of Well No. 1751 Located on J. E. Snyder Farm Sept. 1902
 District Wetzel County W. Va. State
 Division D. District No. 12 Drilled under well Order 245
 Rig built by John Craig Began Sept. 26 1902 Completed Oct. 21 1902
 Well drilled by J. P. Fishell Began Oct. 27 1902 Completed Dec. 11 1902
 Depth of Well 1928 feet Size of Hole 5 3/16. Producing Gas.
 Elev: 829

CASED WITH			REMARKS
AMOUNT	SIZE	KIND	
205	10"	Old	
1274	8 1/4"	"	
1675	6 5/8"	600 new	
1822	5 7/16"	715 old new,	

COAL VEINS Pgh. 520-527

NAME	FORMATIONS						REMARKS
	TOP	BOTTOM	OIL	GAS	WATER		
Gas sand	1200	1225					
Salt "	1260	1310					
" "	1320	1558		1330 = 25'			
Big Lime	1710			1773			
Big Sulfur	1770	1785		1780			
				1785			
				1913			

J. E. Rough commenced drilling deeper at 1720 ft May 19-1917 W.O. 725
 Commenced June 13, 1907

PRESSURE TEST IN		CASING	REMARKS
30 Sec.	270	lbs. 5 7/8	June 1918. 9W 2" = 160-42 lbs. 1430/6
1 Min.	400	" 10	
2 "	500	" 18	
5 "		" 41	
10 "		" 75	
15 "		" 125	
30 "		" 152	
Rock Pressure		" in 210 - 12 hrs.	
Taken Dec. 16 - 1902		19	June 13 - 1917.
By			

WELL TUBED AND PACKED 19.....
 VIZ:- 1824 ft. 4" Tubing.
 Reclaimed.

FIRST PRESSURE TEST IN		TUBING	REMARKS
30 Sec.		lbs.	
1 Min.		"	
2 "		"	
5 "		"	
10 "		"	
15 "		"	
30 "		"	
Rock Pressure		" in	
Taken		19	
By			

MATERIAL FOR THIS WELL RECEIVED FROM FOLLOWING SOURCES:

Rig timbers from	Wm. Roper
Timber	A. G. Higgenbotham
Rig Irons.	Phy. & Reel Co.
Casing	South Chester Tube Wks.