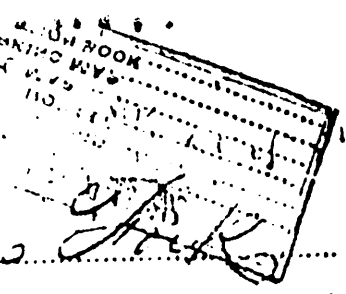


LOCATION FOR WELL No. 1249



On Lot 1 Farm, or waters of Arches Fork District Putnam County, West Virginia

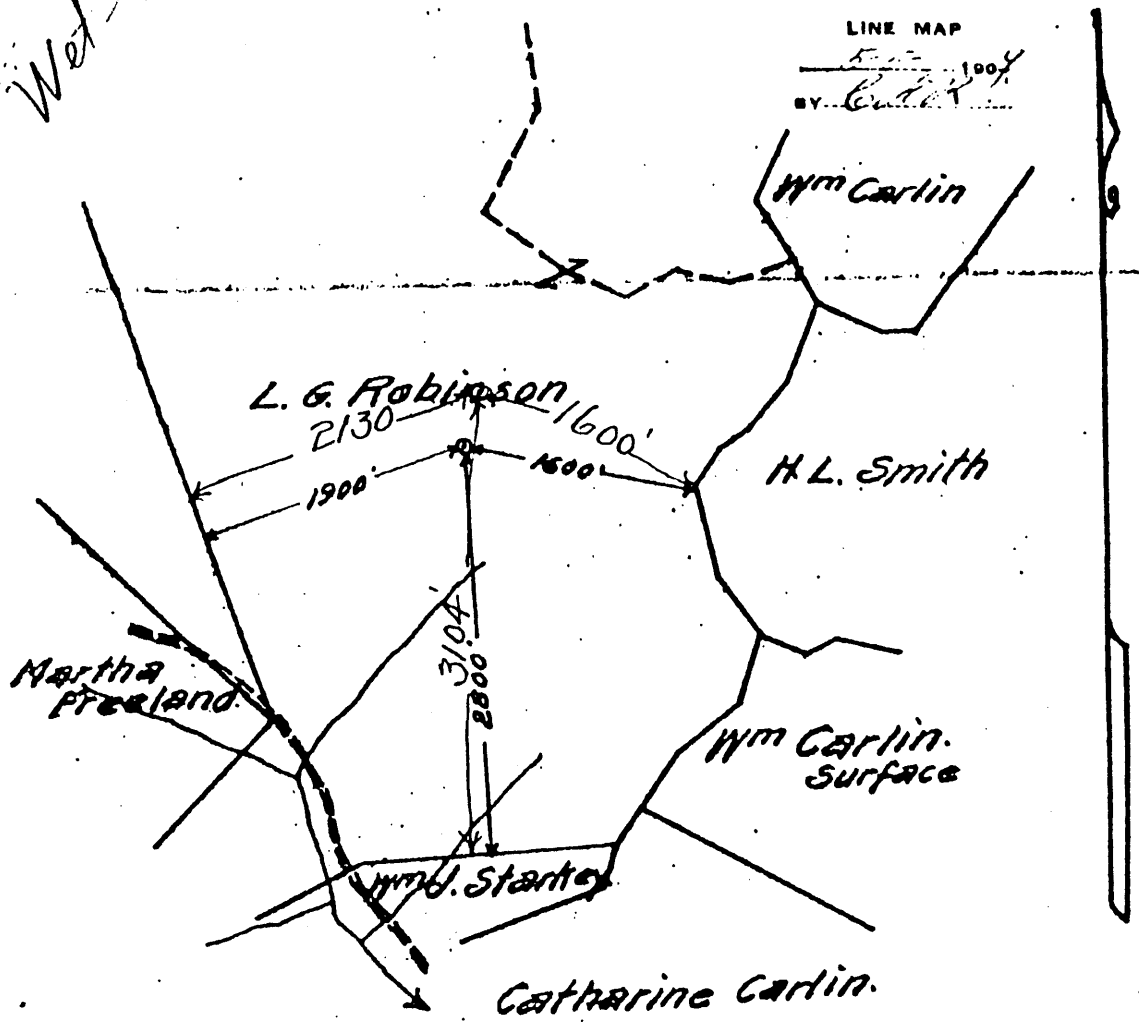
Lease No. 732 Acres 13 1/4 N. 2 S. E. 3 W. Scale: one inch equals 5000 feet Sent to M. S. C. 4-15-1909

Location to be 1600 feet from corner of H. L. Smith farm and 2800 feet from Arm J. Stackey farm line.

ENTERED
WELL BOOK
LEASE RECORD
LEASE LIST
WELL MAP <u>4-15-09</u>
WORKING MAP
LOCATION BOOK

ENTERED
LINE MAP
<u>5000</u> Feet
BY <u>Scott</u>

Wet-682



RESERVE None

SPECIAL INSTRUCTIONS Some lease numbers are located under 924 and 987

Location made 4/22-1909 by P. Scott As per plat, except as noted. On field map 4-24-1909 Returned to Pittsburgh 1911

Location changed on account of Rough ground

Authorized by J. Blomin Date 4/23 1909 Signed P. Scott

Wet-682

REPAIR RECORD

Mannington Distr

Well No. 1249

N 2 S E 3 W

Farm Name L. G. Robinson

Nature of Work Clean Out

Date First Work Done Feb. 12, 1968

Completed: Cleaning Out May 17, 1968

Commenced: Cleaning Out Feb. 19, 1968

Drilling Deeper

Abandoning

Drilling Deeper

Abandoning

CASING AND TUBING RECORD

Size	Below Repairs		Pulled		Put In Well		After Repairs		Weight
	Tally	Steel Line	Tally	Steel Line	Tally	Steel Line	Tally	Steel Line	
10"	550'						550'		
8-1/4"	1613'		1'		1'		1613'		
6-5/8"	2398'						2398'		
2-3/8"	2505'		2505'		2556'		2556'		
3-1/2"	46' 10"		46' 10"						

RECORD OF TREATING FORMATIONS

Date	Sand	DEPTH		TEST BEFORE			TEST AFTER				BHOT
		From	To	Read.	Liq.	Opn.	Read.	Liq.	Opn.	Hrs.	
(SHOT)				Quartz	Shooting Agent	Open or Tamped					
(ACIDIZED)				Gallons	Acid Used						ACIDIZED
(HYDRAFRAC)				Bbls.	Lbs.	Agent	Max. Press.				HYDRAFRAC
				Breakdown	X						
				Treating	X						
				Flushing	X						
				Breakdown	X						
				Treating	X						
				Flushing	X						

RECORD OF ANY DEEPER DRILLING

PACKER RECORD

Formation	Top	Bottom	Oil at	Gas at	Size	Kind	Seal (Steel)
Commenced drilling at Depth of					2" X 6"	Anchor	2437
Total Depth							

VOLUME AND PRESSURE REPORT

BEFORE CLEANING OUT (Take Test When Ready to Clean Out)

Date of Test	Flow Meter or Open Flow	Reading	Liquid Used	Opening	CUBIC FEET	Sands Gas From	
Feb. 19, 1968	F.M.	10/10	Water	1/2"	5,923	Injun	4

AFTER CLEANING OUT

Date of Test	Flow Meter or Open Flow	Reading	Liquid Used	Opening	CUBIC FEET	Sands Gas From	
May 17, 1968	F.M.	18/10	Water	1"	31,950	Injun	6

AFTER DRILLING OUT

Date of Test	Flow Meter or Open Flow	Reading	Liquid Used	Opening	CUBIC FEET	Sands Gas From	

PRESSURE TEST

ROCK

Date of Test	Opening	1 Min.	2 Min.	3 Min.	4 Min.	5 Min.	10 Min.	30 Min.	60 Min.	Hrs.	Lbs.	Days	Lbs.
5-17-68	2 • Casing • Tubing	3	5	7	8	9	14	22	26	24	30	4	30

ON OTHER SIDE OF THIS FORM, MAKE DETAILED REPORT OF WORK DONE, TOGETHER WITH NAMES OF DRILLERS, TOOL DRESSERS, C. O. CREW, ETC.

E. W. Shaff

Wet-682

Farm _____ Acres _____
 District _____ County _____ State _____

Well No. _____

Rig Commenced 190 }
 Rig Completed 190 } Contractor.
 Drilling Commenced *Oct 3 1909* }
 Drilling Completed 190 } Contractor.

ROCK FORMATION.	TOP	BOTTOM.	REMARKS.
	2940		

Well-682

CASING RECORD.

Size.	Charged to Well.		Put in Well.		Pulled Out.		Left in Well.		Transferred Before Completion.		Left at Well, Not in Use.	
	Feet.	In.	Feet.	In.	Feet.	In.	Feet.	In.	Feet.	In.	Feet.	In.

Production First 24 hours

I. N. P. ...
 WELL BOOK
 LEASE RECORD
 LEASE CHECK
 LEASE MAP
 LEASE BOOK

Approved by

J. G. ... Supt.

Proof—Sum of Feet and Inches columns equals First or "Charged to Well."
 Use as many sheets as necessary to make a complete record.
 In making out this record please use copying ink or an indelible pencil.