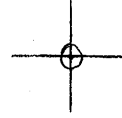


LATITUDE 39° 30' 00"

80° 32' 30"

LONGITUDE



7'5 OGIS topo location

7.5' loc 1.43 S 15' loc _____
' 0.54 W (calc.) _____

Company _____

Farm _____

Quad FOLSOM 7 1/2'

County WETZEL

District GRANT

WELL LOCATION MAP

File No. 103 - 0701

(101)

HOPE NATURAL GAS COMPANY
LOCATION FOR WELL No. 4610

HOPE NATURAL GAS COMPANY

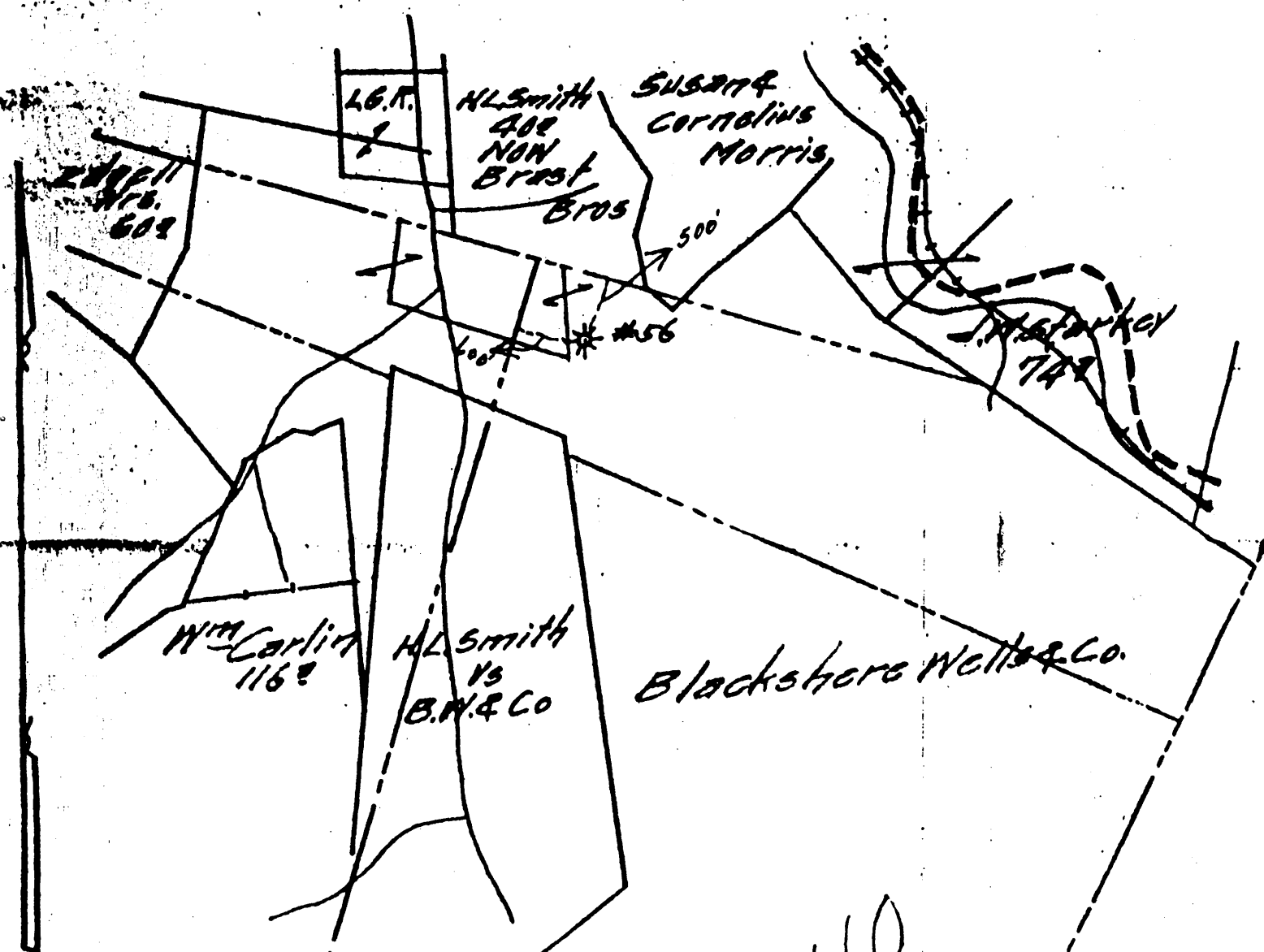
LOCATION FOR WELL No. 4610

c 7-5 p
Instructions

Blackshere Wells Co Farm, or waters of Ten Mile Fork
District, Shetzel County, West Virginia

Grant District, Shetzel County, West Virginia
N 729 Ac. 3800 N. 3 S. E. 4 W.

Location made in Pittsburgh Oct. 31, 1916 Sent to Clarkeburg Nov 1, 1916



Well Book.....
Lease Book.....
Wall Map NOV 22 1916 J.C.L.
Line Map JAN 3 1917 A.J.D.
Sheets NOV 29 1916 W.F.F.

40
PERMIT no. 103-0701

TITLE _____ RESERVE _____

SPECIAL INSTRUCTIONS: COMPLETE WELL ON OR BEFORE

Same Lease on which are located Well No. 389-628-4609 Purchased from Blackshere Wells Co

Oct 27, 1916 at Clarkeburg West Virginia

Location made 11-15-16 by S.P.R. Co. Engrs. As per plat, except as noted. On field map

