



West Virginia Department of Environmental Protection  
Office of Oil and Gas  
**WELL LOCATION FORM: GPS**

API: 47-103-00709 WELL NO.: WV 453471 (Clipgate #W-4897)

FARM NAME: Clipgate

RESPONSIBLE PARTY NAME: EQT Production Company

COUNTY: Wetzel DISTRICT: Grant

QUADRANGLE: Pine Grove 7.5'

SURFACE OWNER: Dominion Transmissions, Inc

ROYALTY OWNER: Thomas L. Kimble et. al.

UTM GPS NORTHING: 4,377,273

UTM GPS EASTING: 527,859 GPS ELEVATION: 326 m (1068 ft)

The Responsible Party named above has chosen to submit GPS coordinates in lieu of preparing a new well location plat for a plugging permit or assigned API number on the above well. The Office of Oil and Gas will not accept GPS coordinates that do not meet the following requirements:

1. Datum: NAD 1983, Zone: 17 North, Coordinate Units: meters, Altitude: height above mean sea level (MSL) – meters.
2. Accuracy to Datum – 3.05 meters
3. Data Collection Method:  
Survey grade GPS     : Post Processed Differential       
Real-Time Differential       
Mapping Grade GPS X: Post Processed Differential X  
Real-Time Differential
4. Letter size copy of the topography map showing the well location.

I the undersigned, hereby certify this data is correct to the best of my knowledge and belief and shows all the information required by law and the regulations issued and prescribed by the Office of Oil and Gas.

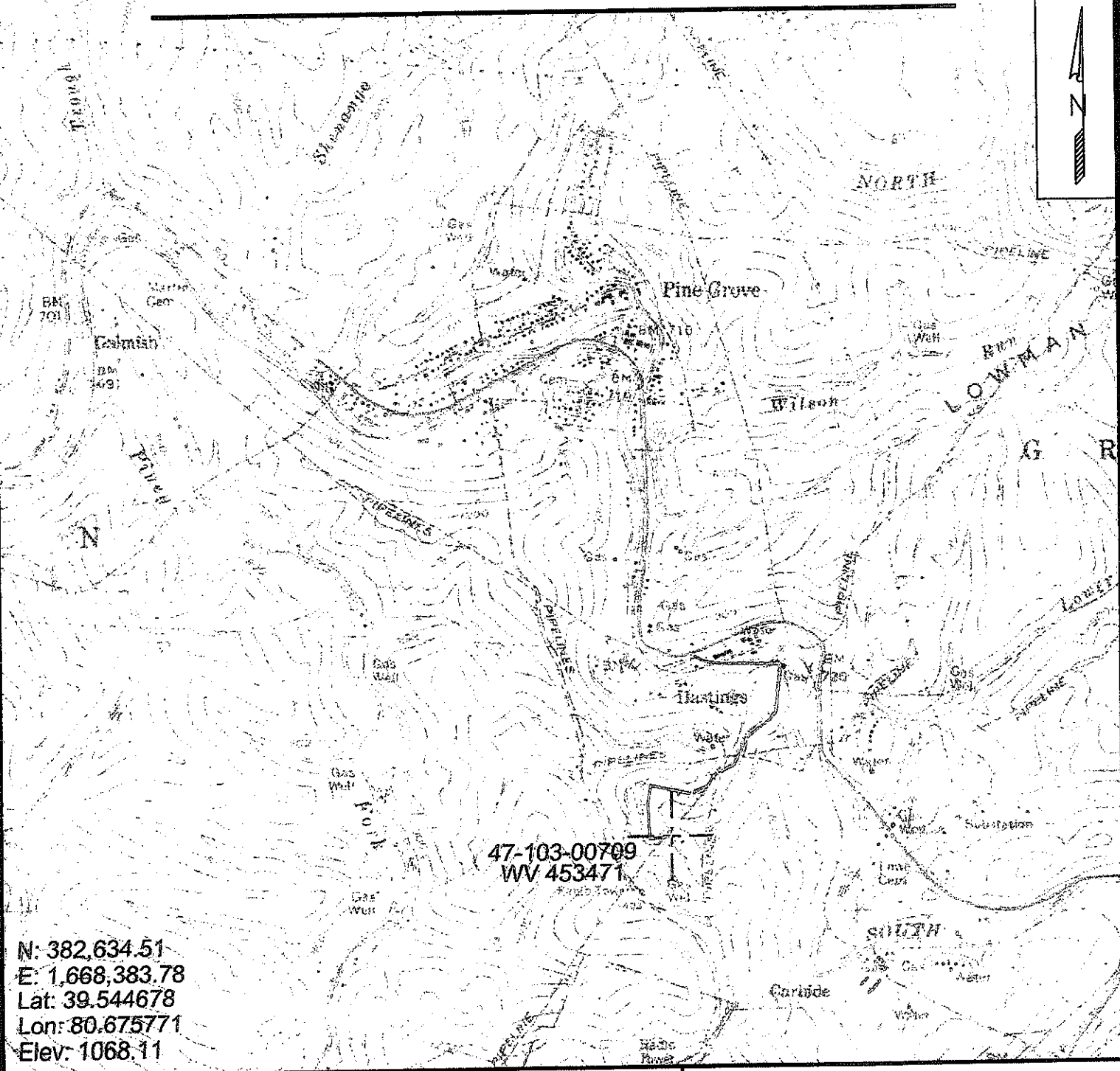
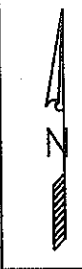
Ben R. Singleton  
Signature  
9-9-11  
Date

P.S. 2092  
Title

Topo Quad: Pine Grove Scale: 1" = 2000' 103-00709P  
 County: Wetzel Date: Aug. 3, 2011  
 District: Grant Project No: 40-34-00-09

**47-103-00709 (WV 453471)**

Topo



N: 382,634.51  
 E: 1,668,383.78  
 Lat: 39.544678  
 Lon: 80.675771  
 Elev: 1068.11



SURVEYING AND MAPPING SERVICES PERFORMED BY:  
**ALLEGHENY SURVEYS, INC.**  
 1-800-482-8606  
 P.O. BOX 438  
 BIRCH RIVER, WV 26610  
 PH: (304) 649-8606  
 FAX: (304) 649-8608

PREPARED FOR:  
**EQT Production Company**  
 1710 Pennsylvania Ave.  
 Charleston, WV 25302