

The Manufactures Light & Heat Co.

LOCATION FOR WELL No. 2029

Lease No. 6381 for 100 Acres, Hundred District.

DESCRIPTION

Well No. 1 on farm of Wm. Stoneking

Church Dis't. Twp. Wetzel County W. Va.

300 feet from South line of Mary A. Teagarden Farm

feet from line of Farm

367 feet north of well on Wm. Stoneking Farm

As shown on Sketch below. Scale of sketch: 1" equals 800 feet

Location made Oct. 10, 1916 Signed H.D. O'Connor, Engr.

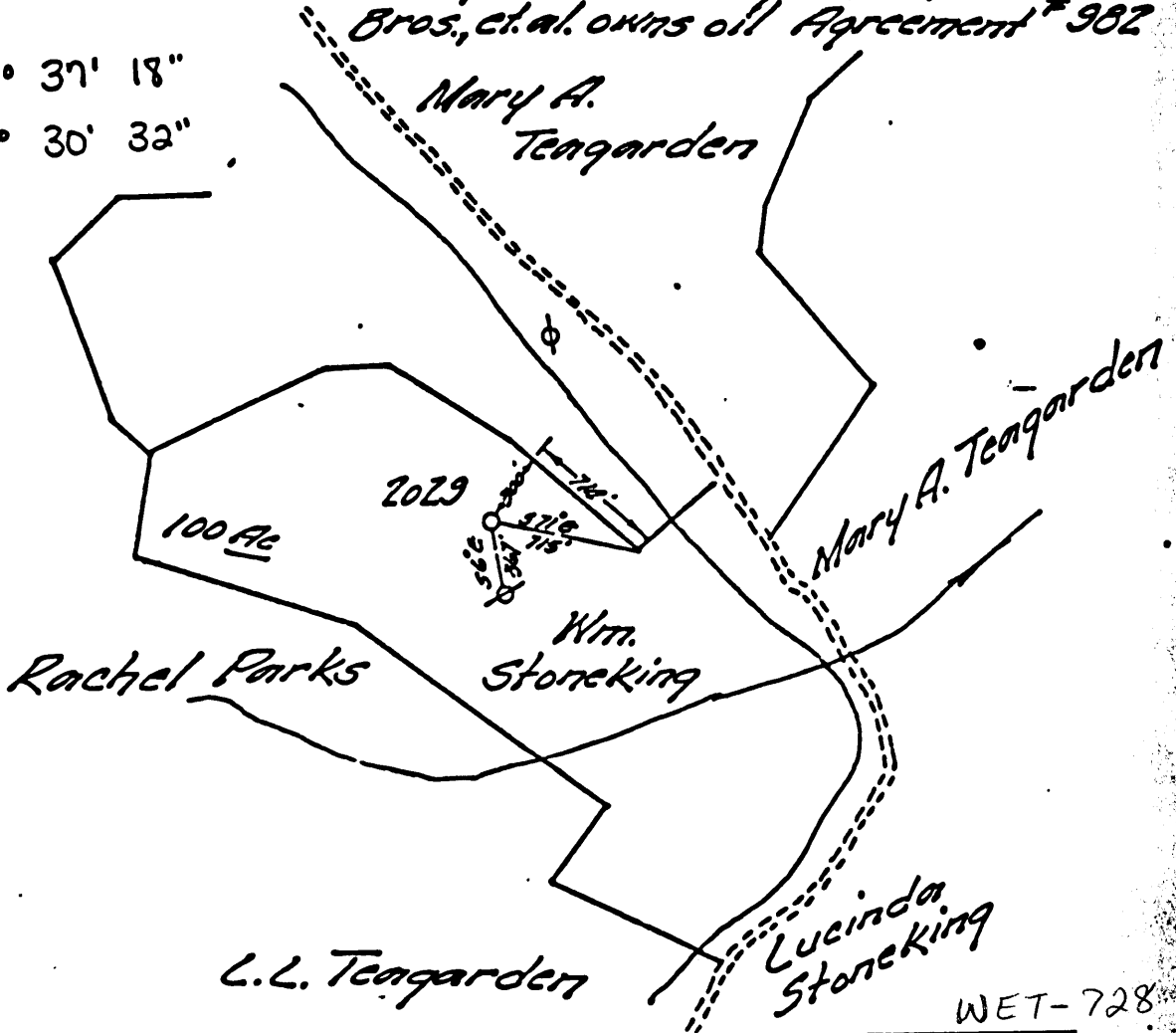
Reservation around Buildings, 300 feet. H.F. Walsh, Foreman

SPECIAL CONDITIONS:-

M.L. & H. Co. owns gas, Schaffer Bros., et al. owns oil Agreement # 982

Lat. 39° 37' 18"

Long. 80° 30' 32"



WET-728

H.F. Walsh Dis't. Supt. Pittsburgh, Pa., Oct. 11, 1916

Hundred, W. Va.

You are hereby authorized to commence work on above well at once, as well must be commenced by at once 101, and must be completed by as soon as possible 191.

All charges for labor and material incident to above well must be charged to this well No. 2029, and when work is completed report must be filled out on reverse side

The Manufacturers Light & Heat Co.

Farmers Bank Building, Pittsburgh, Penna.

Record of Well No. **7220** on **Wm. Loncking** Farm **100** Acres
 Municipality **Field Church** District **Wetzel** County **W. Va.** State
 Rig commenced **Oct. 25** 191**6**, Completed **Nov. 2** 191**6**
 Drilling commenced **Nov 11** 191**6**, Completed **Dec 22** 191**6**
 Cost per foot **\$1.40** Contractor **Chaffner Bros** Address **Haywood W. Va.**
 Driller's names **F. L. Kuefer, J. L. Robey**

| BOILER | | | ENGINE | | | RIG | | |
|----------------|-----|---------------|--------|-----|---------------|-----|-----|--------|
| S. P. | No. | Name of Maker | S. P. | No. | Name of Maker | Row | Col | Height |
| | | | | | | Yes | | 64 |
| Name of Boiler | | | | | | | | |

| CONDUCTOR AND CASING USED IN DRILLING | | | | | | | | | |
|---------------------------------------|---------|---------|------------|------------|------------|------------|-------------|--------|--------|
| Conductor | 12 inch | 10 inch | 8 1/4 inch | 6 3/4 inch | 6 1/4 inch | 5 1/2 inch | 5 3-16 inch | 5 inch | 4 inch |
| 16 | | 207'8" | 1500'7" | 222'0" | | | | | |

| CONDUCTOR AND CASING LEFT IN WELL | | | | | | | | | |
|-----------------------------------|---------|---------|------------|------------|------------|------------|-------------|--------|--------|
| Conductor | 12 inch | 10 inch | 8 1/4 inch | 6 3/4 inch | 6 1/4 inch | 5 1/2 inch | 5 3-16 inch | 5 inch | 4 inch |
| 16 | | None | 1500'7" | 222'0" | | | | | |

| OIL WELL | | | | | GAS WELL | | | | | |
|-----------|-----------------|----------------------|---------|------|----------|----------------|-----------|-------------|----------------------|--------------|
| When Shut | Size of Tapline | 1st Tap's Production | Tapping | Rate | Tests | Size of Packer | Depth Set | Packed with | 1st Month's Pressure | 2nd Pressure |
| | | | | | | 5 1/2 | 16x65/6 | | 35 | 350 |

| FORMATION | | Top | Bottom | Thickness | REMARKS |
|-------------|----------------------|------|--------|-----------|-------------------------------|
| Sand | Bluff white soft | 615 | 645 | 30 | |
| Coal | | 645 | 648 | 3 | |
| Coal | Pittsburgh white | 926 | 1005 | 79 | |
| Sand | big dunkard soft | 1455 | 1545 | 90 | |
| Sand | gas white hard | 1695 | 1720 | 25 | |
| Sand | 1st salt white hard | 1758 | 1878 | 120 | water 1790 1/2 bailer per hr. |
| Sand | 2nd salt white hard | 1785 | 2030 | 245 | |
| Lime | big white hard | 2100 | 2265 | 165 | |
| Sand | big Injun light hard | 2265 | 2480 | 215 | Gas very little 2300 & 2340 |
| Sand | Squar gray hard | 2535 | 2610 | 75 | |
| Sand | 30ft gray hard | 2625 | 2650 | 25 | |
| Sand | 50ft light hard | 2630 | 2945 | 315 | |
| Sand | Gordon Stray | 3030 | 3044 | 14 | dark hard |
| Sand | Gordon | 3065 | 3090 | 25 | |
| Sand | 4th hard | 3110 | 3142 | 32 | Gas at 3140 |
| Total Depth | | | 3142 | | |

WET-728

J. P. Walsh
Superintendent of Co.

Examine above information and measurements and found to be correct by *J. P. Walsh* Superintendent of Co.
 The above blank must be filled out carefully by the Contractor, with a complete and accurate record of the Well and accompany, when presented for payment.
 All formations and known sands must be given by their proper name, with steel line measurements, and under the head of "Remarks" must be recorded in what sand and at what depth Oil, Gas or Water was found, the quantity of same, the quality of the sand, and thickness of pay.
 Make no memorandum of boiler and engine if owned by Contractor.

0002 0532

Division _____ Company _____
 Record of Well No. **2027** on _____ Farm _____ Acres _____
 Field _____ District _____ County _____ State _____
 Rig Commenced 19 _____ Completed 19 _____
 Drilling Commenced 19 _____ Completed 19 _____
 Contractor _____ Address _____
 Driller's Name _____

CASING AND TUBING RECORD

| Conductor | 13" | 10" | 8 1/2" | 7" | 6 1/2" | 5 1/2" | 4" | 3" |
|------------------|-----|-----|--------|----|--------|--------|----|----|
| Used in Drilling | | | | | | | | |
| Left in Well | | | | | | | | |

PACKER RECORD

SHOOTING RECORD

| Size | Depth Set | Type Packer | Date | Type Explosive | Amount | DEPTH | | Volume Before Co. Ft. | Volume After Co. |
|------|-----------|-------------|------|----------------|--------|-------|--------|-----------------------|------------------|
| | | | | | | Top | Bottom | | |
| | | | | | | | | | |

VOLUME AND PRESSURE

| Date | Reading in Inches | Liquid | Size (inches) | Volume | Head | PRESSURE IN MIN. | | | | | 24 Hr. H. P. | Max. H. P. | |
|------|-------------------|--------|---------------|--------|------|------------------|---|----|----|----|--------------|------------|--|
| | | | | | | 1 | 5 | 10 | 20 | 30 | | | |
| | | | | | | | | | | | | | |

TOTAL INITIAL OPEN FLOW

CUBIC FEET PER 24 HOURS

| FORMATION | TOP | BOTTOM | THICKNESS | REMARKS | | |
|----------------------|-------|--------|-----------|------------------------|------|------|
| | | | | slate white soft | 2030 | 2030 |
| shale red soft | 0 | 20- | 25' | lime white hard | 2030 | 2060 |
| sand white " | 20- | 50 | 25' | Red Rock soft | 2060 | 2090 |
| slate " soft | 50 | 100 | 100 | lime white hard | 2090 | 2120 |
| shale white close | 150 | 105- | 5' | lime white hard | 2120 | 2140 |
| shale red soft | 155- | 615- | 460 | slate black soft | 2140 | 2150 |
| slate blue soft | 648 | 750 | 102 | lime white hard | 2150 | 2170 |
| lime white broken | 750 | 850 | 100 | similar black soft | 2170 | 2177 |
| lime white close | 850 | 920 | 70 | slate white soft | 2177 | 2190 |
| slate black soft | 920 | 928 | 8 | slate black soft | 2190 | 2529 |
| lime white soft | 1000- | 1045 | 45 | slate black soft | 2529 | 2730 |
| lime white close | 1045- | 1078 | 33 | slate black soft | 2730 | 2777 |
| shale red soft | 1078 | 1120 | 42 | sand shells white hard | 2777 | 2780 |
| lime white close | 1120 | 1160 | 40 | slates white soft | 2780 | 3030 |
| slate pink soft | 1160 | 1186 | 26 | slate pink soft | 3030 | 3065 |
| lime white close | 1186 | 1200 | 14 | slate dark soft | 3065 | 3110 |
| shale red soft | 1200 | 1200 | 0 | | | |
| lime white close | 1200 | 1260 | 60 | | | |
| slate " soft | 1260 | 1270 | 10 | | | |
| shale red soft | 1270 | 1320 | 50 | | | |
| L. Dunham white hard | 1320 | 1440 | 120 | | | |
| shale black soft | 1440 | 1470 | 30 | | | |
| lime white hard | 1470 | 1480 | 10 | | | |
| shale black soft | 1480 | 1500 | 20 | | | |
| lime white broken | 1500 | 1600 | 100 | | | |
| shale black soft | 1600 | 1620 | 20 | | | |
| slate white soft | 1620 | 1670 | 50 | | | |
| slate black soft | 1670 | 1720 | 50 | | | |

WET-728

Examined above information and measurements and found to be correct by _____
 Contractor _____ Field Superintendent _____
 NOTE: The above blank must be filled out carefully by the contractor, with a complete and accurate record of the well, and accompany when presented for pass of the well for drilling. All formations and known sands must be given by their proper name, with steel line measurements, and under the head of "Remarks" it is to be reported in what sand and at what depth Oil, Gas or Water was found, the quantity of same, the quality of the sand, and thickness of pay.

0002 0533