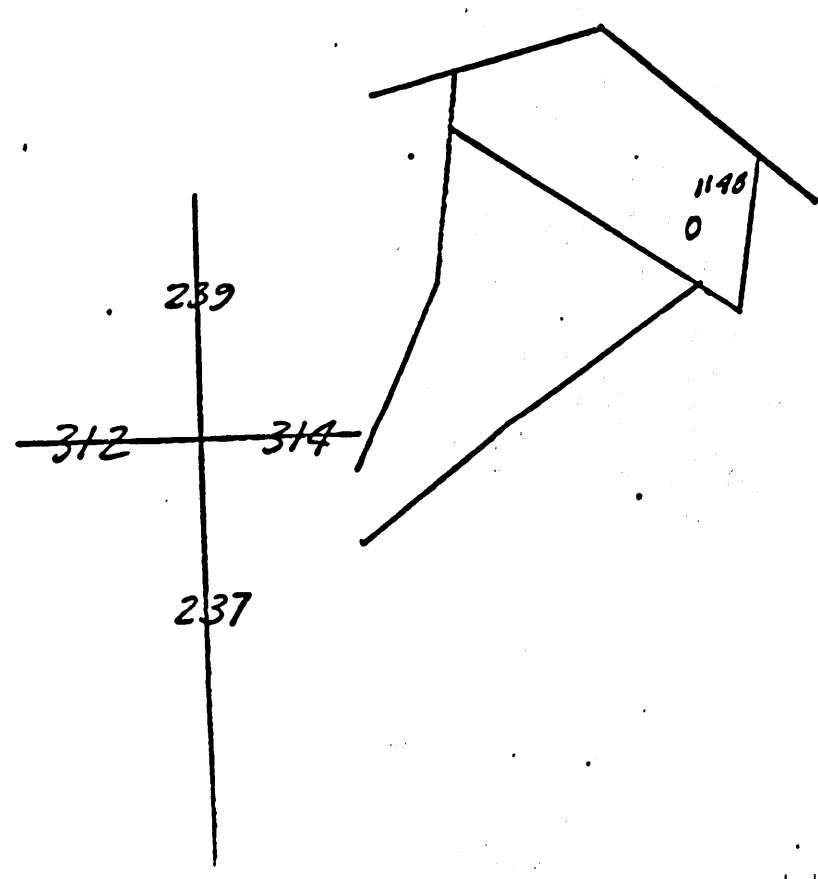


COMPANY COLUMBIA GAS TRANSMISSION CORPORATION MAP NO. Hundred
FARM R.L. Mapel et al. WELL NO. 601198
DISTRICT Church COUNTY Wetzel STATE WV
SCALE 1" = 1320' LONG. 80° 26' 11" LAT. 39° 40' 46"



WET-741

The Manufacturers Light & Heat Co.

Farmers Bank Building, Pittsburg, Penna.

Record of Well No. 1-1148 on 1st Maple Farm, W. Va. State
 Field Church District Wetzel County W. Va.
 Rig commenced 190 Completed 190
 Drilling commenced Sept 15th 1904 Completed Aug 30 1905
 Cost per foot 2.25 Contractor Keese Heasley & Meals Address Waynesburg
 Drillers' names Dick Potter, Jno. Hariff, J.A. Eakin, F. Roy

BOILER			ENGINE			RIG		
No.	Name of Maker	H. P.	No.	Name of Maker	H. P.	Height	Name of Builder	
35	10730	F&T	25	14720	F&T	82A		

CONDUCTOR AND CASING USED IN DRILLING									
Conductor	12 inch	10 inch	8 1/2 inch	8 inch	6 1/2 inch	6 inch	5 1/2 inch	5 inch	4 inch
12		220	1450	2330					

CONDUCTOR AND CASING LEFT IN WELL									
Conductor	12 inch	10 inch	8 1/2 inch	8 inch	6 1/2 inch	6 inch	5 1/2 inch	5 inch	4 inch
12			1450	2330					3315

OIL WELL										GAS WELL		
When Shot	Size of Torpedo	1st Day's Production	Tubing	Rods	Tanks	Size of Packer	Depth Set	Packed With	1st Month's Pressure	Back Pressure		
Aug 31 st	50 lbs					6 3/4"	254 ft	4 ft	80 #	51		

FORMATION	Top	Bottom	Thickness	REMARKS
Maple town coal	1030	1034	4'	Used a better Packer
Cillsbury coal	1130	1138	8'	
Little Cumberland	1530	1560	30'	
Big Cumberland	1620	1680	60'	
Gas sand	1890	1910	20'	
Salt sand	2030	2140	110'	
Mason "	2230	2294	64'	
Gas		2235		
Big Limestone	2297	2345	48'	
Big Inyan	2345	2600	255'	
Gas		2370		
Slate & shells	2600	3146	546'	
Sand	3146	3176	30'	
Gas		3166		
Oval Rock	3176	3182	6'	
Sand shell	3182	3186	4'	
Slate & shells	3186	3243	57'	
Gordon sand	3243	3243	50'	
Gas at		3272	9275	
Total Depth		3243		just through sand into slate.

Examined above information and measurements and found to be correct by Keese Heasley & Meals Contractor.
 Examined and approved by H. L. Snyder Superintendent of Co.
 NOTE - The above blank must be filled out carefully by the Contractor, with a complete and accurate record of the Well, and accompany when presented for payment the bill for drilling.
 All formations and known sands must be given by their proper name, with steel line measurements, and under the head of "Remarks" must be recorded in what sand and at what depth Oil, Gas or Water was found, the quantity of same, the quality of the sand, and thickness of any.

0002 0678