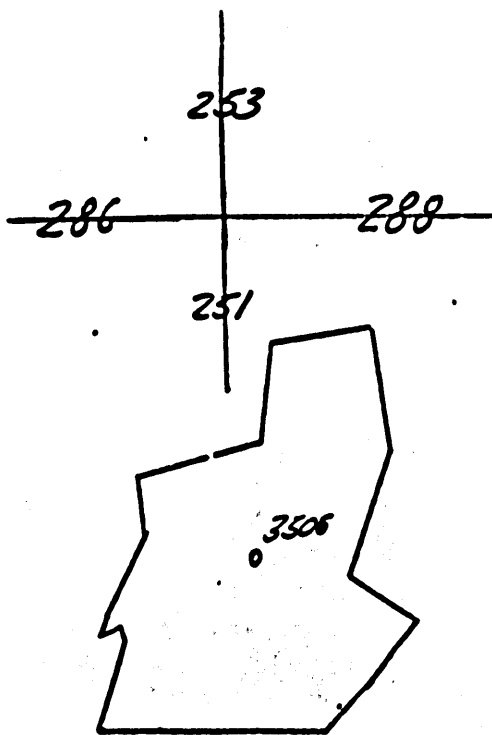


COMPANY **COLUMBIA GAS TRANSMISSION CORPORATION** MAP NO. *Ken. Mar. 1911*  
FARM *J. Carl Palmer* WELL NO. **603506**  
DISTRICT *Proctor* COUNTY *Wetzel* STATE *WV*  
SCALE: **1" = 1320'** LONG. **80° 47' 59"** LAT. **37° 41' 29"**



WET-746

LATITUDE 39° 42' 30"

LONGITUDE 88° 47' 30"



7'5 OGIS topo location

7.5' loc	<u>1735</u>	15' loc	_____
	<u>0.41W</u>	(calc.)	_____

Company \_\_\_\_\_

Farm \_\_\_\_\_

Quad NEW MARTINSVILLE 7 1/2'

County WETZEL

District PROCTOR

WELL LOCATION MAP

File No. 103 - 0746

(023)

3506  
 248 Fourth Ave., Pittsburgh, Pa.  
 Company

District \_\_\_\_\_ Farm \_\_\_\_\_ Area \_\_\_\_\_  
 State \_\_\_\_\_  
 Record of Well No. \_\_\_\_\_  
 Field \_\_\_\_\_  
 Rig Commenced \_\_\_\_\_ 19 \_\_\_\_\_ Completed \_\_\_\_\_ 19 \_\_\_\_\_  
 Drilling Commenced \_\_\_\_\_ 19 \_\_\_\_\_ Completed \_\_\_\_\_ 19 \_\_\_\_\_  
 Contractor \_\_\_\_\_ & Taylor \_\_\_\_\_ Address \_\_\_\_\_  
 Cost per Foot \_\_\_\_\_  
 Driller's Name \_\_\_\_\_

BOILER				ENGINE				RIG			
M. P.	No.	Name of Maker	H. P.	No.	Name of Maker	New	% OM	Height	Name of Builder		

CONDUCTOR AND CASING USED IN DRILLING										
Conductor	2 1/2 inch	3 inch	3 1/2 inch	4 inch	4 1/2 inch	5 inch	5 1/2 inch	6 inch	6 1/2 inch	7 inch

CONDUCTOR AND CASING LEFT IN WELL										
Conductor	2 1/2 inch	3 inch	3 1/2 inch	4 inch	4 1/2 inch	5 inch	5 1/2 inch	6 inch	6 1/2 inch	7 inch

OIL WELL						GAS WELL				
When Shot	Size of Torpedo	1st Day's Production	Tubing	Size	Length	Size of Packer	Depth Set	Packed with	1st Minute Pressure	Surf Pressure

FORMATION	Top	Bottom	Thickness	REMARKS
Top Coal	310	310	0'	
Big Dunker	310	315	5'	
Gas Sand	315	320	5'	
Salt Sand	1040	1090	50'	10 Boiler water
Shalt Sand	1090	1130	40'	
Shalt Sand	1130	1305	175'	
Shalt Sand	1305	1385	80'	
Shalt Sand	1385	1425	40'	
Shalt Sand	1425	1450	25'	
Shalt Sand	1450	1550	100'	water at 1550
Shalt Sand	1550	1710	160'	
Shalt Sand	1710	1760	50'	
Shalt Sand	1760	1885	125'	
Shalt Sand	1885	1970	85'	
Shalt Sand	1970	2000	30'	
Shalt Sand	2000	2060	60'	
Shalt Sand	2060	2115	55'	
Shalt Sand	2115	2130	15'	
Shalt Sand	2130	2150	20'	
Shalt Sand	2150	2170	20'	
Shalt Sand	2170	2185	15'	

Well shot Nov 11 - 1922

Have no record of casing pulled out of well

The 10" and 6 1/2" casing is visible at top of hole

Proven Oil ... 1922 ...  
 24 27 29 31 33 35

WET-746

Examined above information and measurements and found to be correct by \_\_\_\_\_  
 Examined and approved by \_\_\_\_\_  
 Superintendent of Co. \_\_\_\_\_

NOTE:—The above blank must be filled out carefully by the Contractor, with a complete and accurate record of the Well and operations, when presented for payment of the bill for drilling.

All directions and known sands must be given by their proper name, with steel line measurements, and under the head of "Remarks" must be recorded in what sand and at what depth Oil, Gas or Water was found, the quantity of same, the quality of the sand, and thickness of pay.

Make no memoranda of holes and casing if cased by contractor.