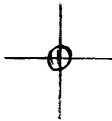


LATITUDE 39° 32' 30"

00, 04, 08
LONGITUDE



7'5 OGIS topo location

7.5' loc 1.27 S 15' loc _____
 1.48 W (calc.) _____

Company _____

Farm _____

Quad PINE GROVE 7 1/2'

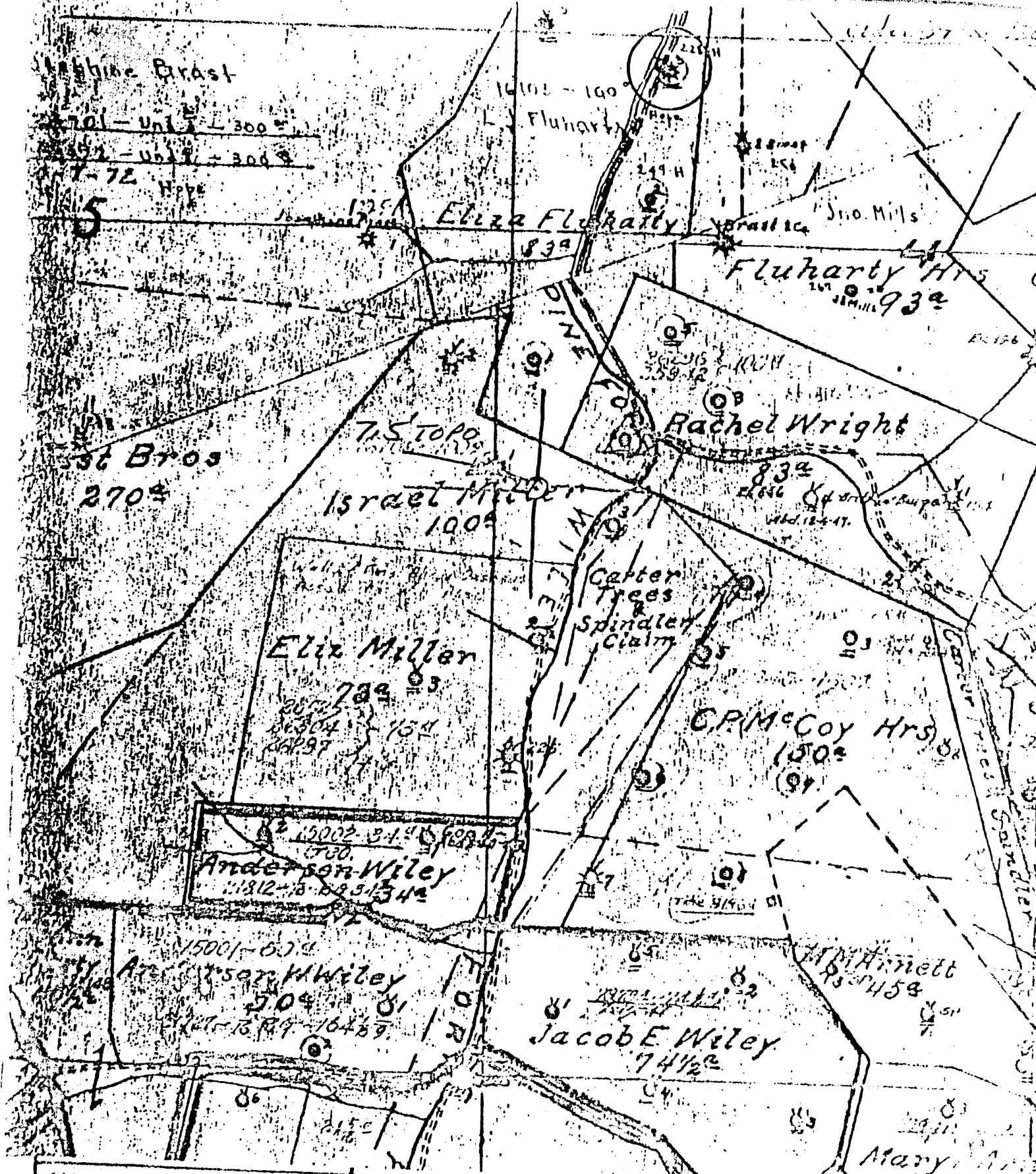
County WETZEL

District GREEN

WELL LOCATION MAP

File No. 103 - 0911

(095)



(+) DEMOTES LOCATION OF WELL ON UNITED STATES TOPOGRAPHIC MAPS

FORM IV-6
(8-78)
NS7NGWA



DATE 1-4-19
OPERATOR'S WELL NO. 3
API WELL NO. 47-103-0911
STATE COUNTY PERMIT

STATE OF WEST VIRGINIA
DEPARTMENT OF MINES
OIL AND GAS DIVISION

WELL TYPE: OIL GAS LIQUID INJECTION WASTE DISPOSAL
(IF "GAS", PRODUCTION STORAGE DEEP SHALLOW
LOCATION: ELEVATION NH WATER SHED PINEY FORK
DISTRICT GREENE COUNTY WETZEL
QUADRANGLE PINE GROVE 7.5!

SURFACE OWNER _____ ACREAGE _____
OIL & GAS ROYALTY OWNER _____ LEASE NO. _____ LEASE ACREAGE _____

PROPOSED WORK: DRILL CONVERT DRILL DEEPER REORILL FRACTURE OR STIMULATE PLUS OFF OLD FORMATION PERFORATE NEW FORMATION OTHER PHYSICAL CHANGE IN WELL (SPECIFY) _____

PLUS AND ABANDON CLEAN OUT AND REPLUG
TARGET FORMATION _____ ESTIMATED DEPTH _____
WELL OPERATOR Pennzoil Company DESIGNATED AGENT James G. ...
ADDRESS P. O. Box 1588 ADDRESS P. O. Box 1588
Parkersburg, WV 26101 Parkersburg, WV 26101

L.S. Fluharty - 3

No. 1 SOUTH PENN OIL COMPANY—COMPLETION

SERIAL NO. _____ FARM Louisa J. Fluharty. WELL NO. 3.
 ELEVATION _____ N. 6. S. _____ W. 4.
 LEASE NO. _____ ACRES 88.
 WATERS OF Piney.
 DISTRICT Greene. COUNTY Wetzel. STATE W. Va.
 DRILLING COMMENCED 11/18-1899. COMPLETED 3/4-1900 DEPTH 2890'

SANDS	TOP	BOTTOM	ELEV. TOP	CASING
POH. COAL on the LINE	518'			
Big Injun Sand.	1800'	2000'		10" 160'
Stray Sand.	2571'			8 1/4" 910'
Gordon Sand.	2593'	2612'		6-5/8" 1938'

INITIAL PROD. 40 Bbls. SAND Gordon. DEPTH 2102'

GAS TEST
 SHOT 10/2-1900 QUARTS 30. 5/2-1902--20qts. 6/8-1911--
 REMARKS 120qts.

Pay of gas in Stray Sand at 2575'
 REPORTED BY Piney District. ABANDONED _____

103-911

47. 103-0911