

WW-7
8-30-06



West Virginia Department of Environmental Protection
Office of Oil and Gas

WELL LOCATION FORM: GPS

API: 47-103-01433 WELL NO.: 7516

FARM NAME: J.L. STEVENS

RESPONSIBLE PARTY NAME: WEST VIRGINIA LAND RESOURCES INC.

COUNTY: WETZEL DISTRICT: GRANT

QUADRANGLE: BIG RUN W.VA

SURFACE OWNER: DOUGLAS JOE SMITH

ROYALTY OWNER: _____

UTM GPS NORTHING: 4,373,865 m

UTM GPS EASTING: 542,195 m GPS ELEVATION: 307 m

The Responsible Party named above has chosen to submit GPS coordinates in lieu of preparing a new well location plat for a plugging permit or assigned API number on the above well. The Office of Oil and Gas will not accept GPS coordinates that do not meet the following requirements:

1. Datum: NAD 1983, Zone: 17 North, Coordinate Units: meters, Altitude: height above mean sea level (MSL) – meters.
2. Accuracy to Datum – 3.05 meters
3. Data Collection Method:

Survey grade GPS _____ : Post Processed Differential _____

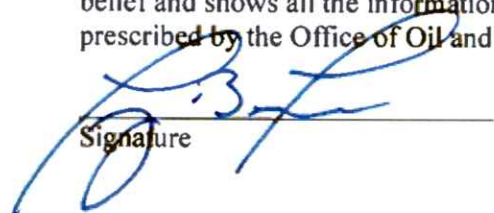
Real-Time Differential _____

Mapping Grade GPS : Post Processed Differential

Real-Time Differential _____

4. Letter size copy of the topography map showing the well location.

I the undersigned, hereby certify this data is correct to the best of my knowledge and belief and shows all the information required by law and the regulations issued and prescribed by the Office of Oil and Gas.


Signature

PS 2002
Title

JANUARY 1, 2024

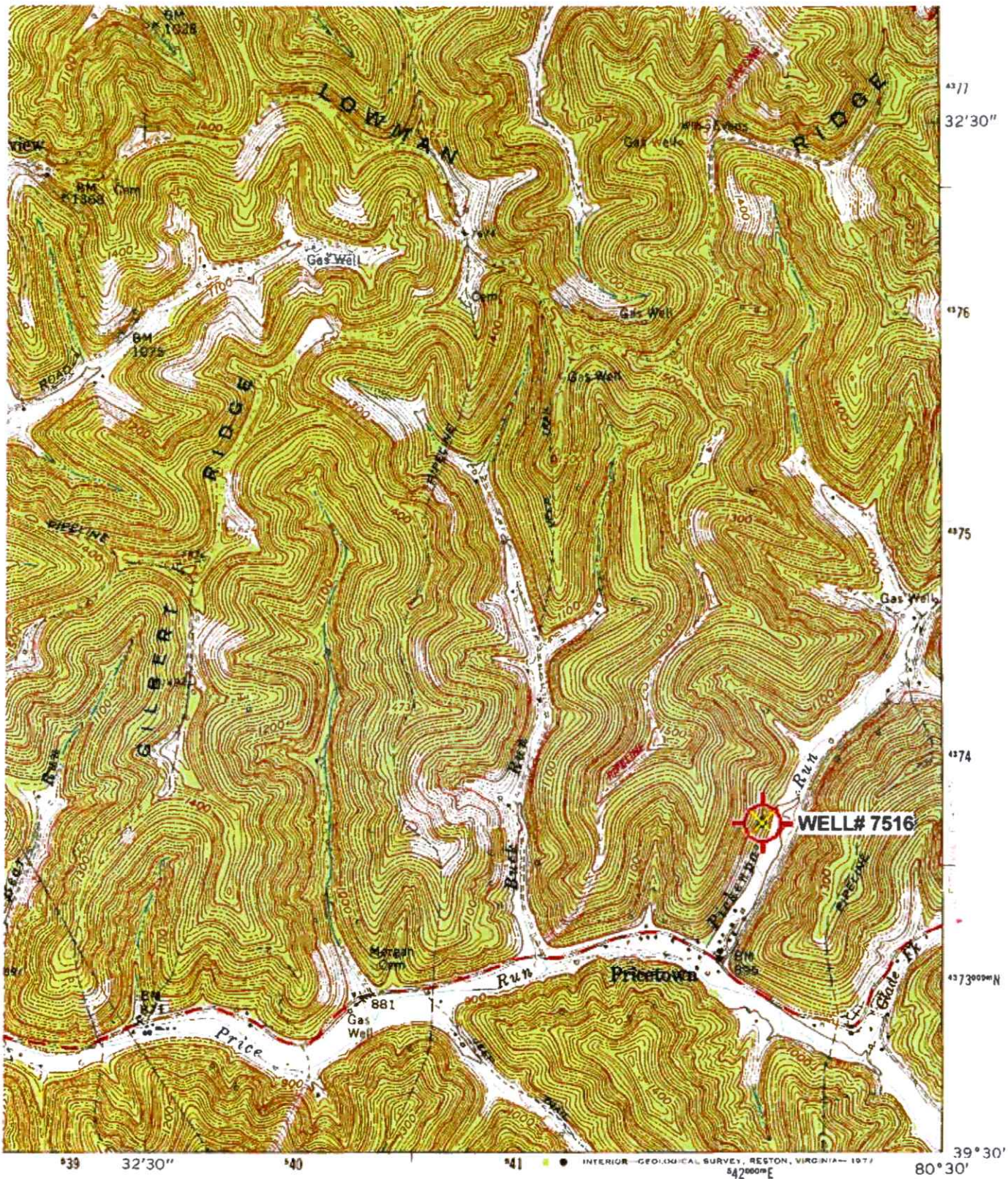
Date

RECEIVED
Office of Oil and Gas

JAN 08 2024

WV Department of
Environmental Protection

01/26/2024



ROAD CLASSIFICATION

- Heavy-duty —————
- Medium-duty ————
- Light duty - - - - -
- Unimproved dirt - - - - -
- Slate Route ————

(WALLACE)
4582 N NW

RECEIVED
Office of Oil and Gas

JAN 08 2024

BIG RUN, W. VA. WV Department of
SE/4 LITTLETON 15' QUADRANGLE
N3930—W8030/7.5

Revisions shown in purple compiled in cooperation with
'Big Run: WV Scale: 1" = 0.379Mi 610Mt 2.000Ft. 1 Mi = 2.640" . 1 cm = 240Mt

1960

01/26/2024

Well# 7516
BIG RUN WV 7.5' Quad
Scale: 1" = 500'



1100

1500

Run

Well# 7516

Pickenpaw

1300

PIPELINE

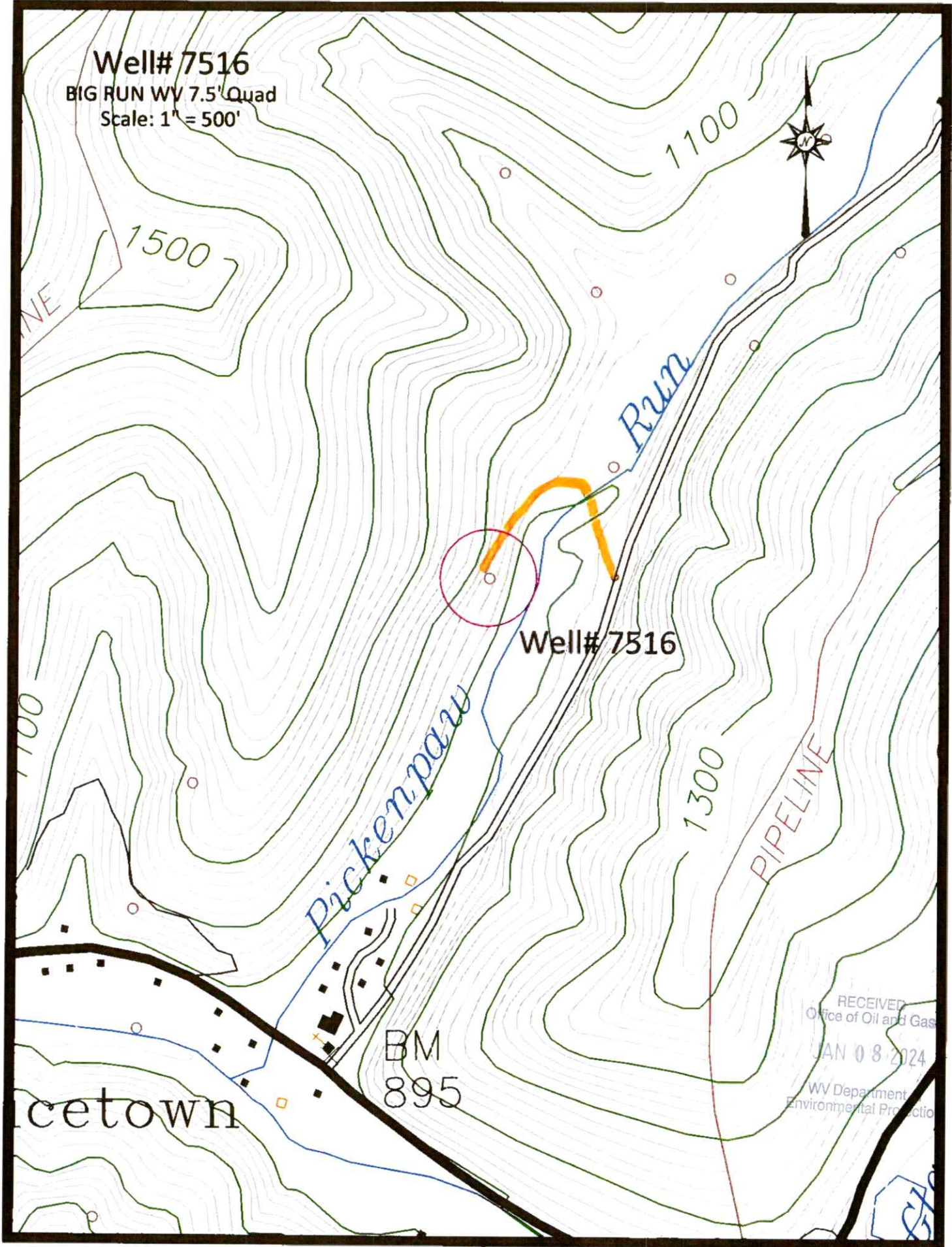
BM
895

cetown

RECEIVED
Office of Oil and Gas
JAN 08 2024
WV Department
Environmental Protection

Access from J

01/26/2024



Well# 7516
BIG RUN WV 7.5' Quad
Scale: 1" = 2000'

Well# 7516

Acres land

01/26/2024

