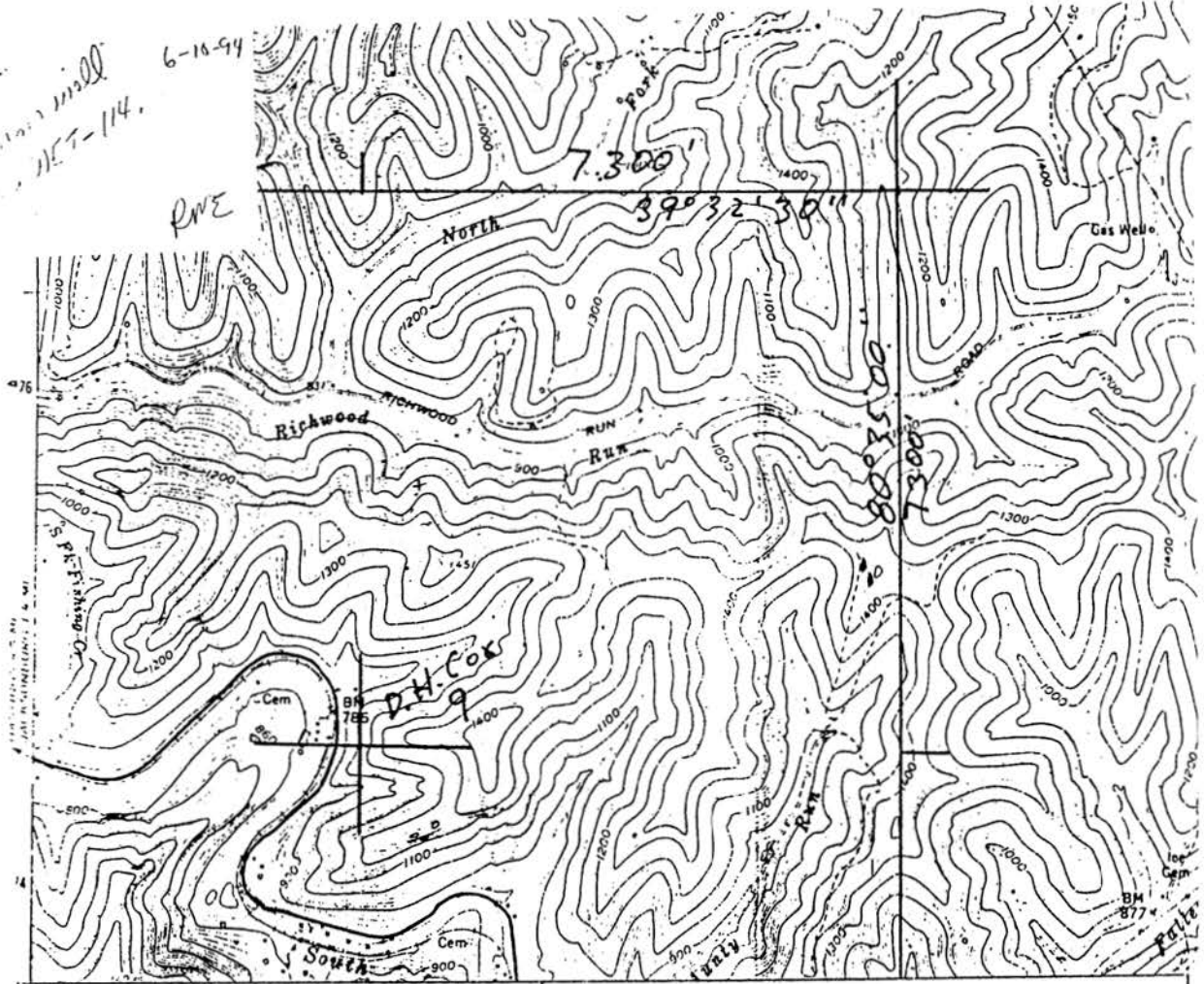


6-18-94
NET-114



I, the undersigned, Hereby certify that this plat is correct to the best of my knowledge and belief.

SIGNED Curtis A. Lucas
Curtis A. Lucas
TITLE Supervisor
Surveying & Mapping

RECEIVED
APR 11 1988

DIVISION OF OIL & GAS
DEPARTMENT OF ENERGY

STATE OF WEST VIRGINIA
DEPARTMENT OF ENERGY
OIL AND GAS DIVISION

DATE March 31, 19 88

OPERATORS WELL NO. D.H. Co. 9

API WELL NO. 047-103-1455

Connelly
See: 103-0114

WELL TYPE: OIL GAS LIQUID INJECTION WASTE DISPOSAL
(if "GAS" PRODUCTION STORAGE DEEP SHALLOW

LOCATION: ELEVATION 1040.62 WATER SHED South Fork of Fishing Cr
DISTRICT Grant COUNTY Wetzel
QUADRANGLE Big Run

SURFACE OWNER _____ ACREAGE _____

OIL & GAS ROYALTY OWNER _____ LEASE ACREAGE 436
LEASE NO. 53140-50

PRODUCING FORMATION Gordon TOTAL DEPTH 2926'

WELL OPERATOR PENNZOIL PRODUCTS COMPANY DESIGNATED AGENT J. A. Crews

ADDRESS P.O. Box 5519 ADDRESS P.O. Box 5519

Vienna, West Virginia 26105-5519 Vienna, WV 26105-5519

LATITUDE 39 3230

8035

LONGITUDE

OGIS
7.5' loc

7.5 OGIS topo location

7.5' loc	<u>1.38S</u>	15' loc	<u>1.26S</u>
	<u>1.38W</u>	(calc.)	<u>1.38W</u>

Company _____

Farm _____

Quad Big Run Littleton SC

County _____

District Grant

WELL LOCATION MAP

File No. Well 114

Now 103-1455

Grant District, Wetzel County, W. Va.
 By South Penn Oil Co., Chamber of Commerce Bldg., Pittsburgh, Pa.
 On 436 acres, surface owned by Richard B. Anderson, Jacksonburg,
 W. Va., and mineral rights by Joe Shiben, New Martinsville,
 W. Va.

Elevation, 1040.62' L.
 16" conductor; 10" casing, 402' 7"; 8 1/2", 1364' 3"; 6-5/8", 2077' 9";
 5-3/16", 2350'.

Coal was encountered at 832-837'.

Abandonment reported to Dept. of Mines April 13, 1936.

Well was shot April 24, 1909, with 40 qts., and Dec. 6, 1916,
 with 60 qts.

Salt water at 2236'.

Oil well.

WET-114

	Top.	Bottom.
✓ Pittsburgh Coal	832	- 837
✓ Little Dunkard Sand	1165	- 1185
✓ Big Dunkard Sand	1350	- 1370
✓ Gas Sand	1420	- 1500
✓ Salt Sand	1610	- 1700
✓ Little Line	2059	- 2064
✓ Big Line	2069	- 2123
✓ Big Injun Sand (gas, 2224'; oil and gas, 2229'; water, 2236')	2123	
Total depth		2238
DRILLED DEEPER:		
Bottom Big Injun Sand		2338
Sand	2876	- 2891
Slate	2891	- 2895
✓ Stray Sand (light show oil, 2900'; oil and gas, good show, 2905')	2895	
✓ Gordon Sand (oil, 2912'; oil and gas, 2924')	2909	
Total depth		2926

2926