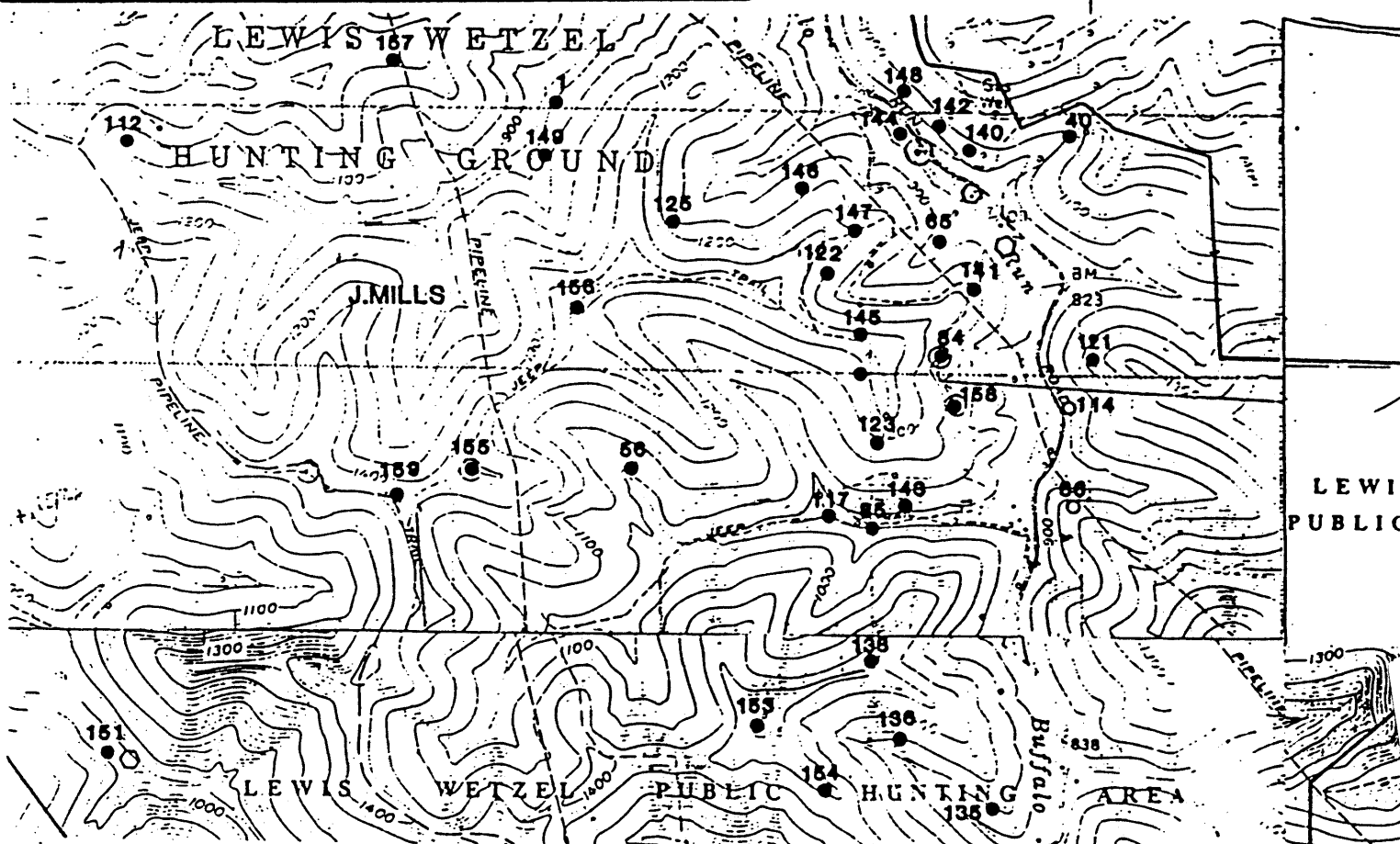


*Please assign
API #, 1507*

1) Attach a photo copy of the location of the well on a 7.5 minute Quadrangle with the corresponding Longitude and Latitude.
2) Designate the location of the well with the symbol(+).



I, the undersigned, hereby certify that this plat is correct to the best of my knowledge and belief.

SIGNED *Duane Club*
TITLE District Manager

DATE July 25, 1990
OPERATORS WELL NO. J. Mills #114
API WELL NO. 103-1507

STATE OF WEST VIRGINIA
DEPARTMENT OF ENERGY
OIL AND GAS DIVISION

WELL TYPE: OIL GAS LIQUID INJECTION WASTE DISPOSAL
(IE "GAS" PRODUCTION STORAGE DEEP SHALLOW

LOCATION: ELEVATION 885' WATER SHED Buffalo Run
DISTRICT Grant COUNTY Wetzel
QUADRANGLE Pine Grove

SURFACE OWNER Mills - Wetzel Lands, Inc. ACREAGE 5451 AC.

OIL & GAS ROYALTY OWNER Mills - Wetzel Lands, Inc. LEASE ACREAGE 5451 AC.
LEASE NO. W-195

PRODUCING FORMATION Gordon TOTAL DEPTH 2926'

WELL OPERATOR Quaker State Corporation DESIGNATED AGENT Frank Rotunda

ADDRESS P.O. Box 189 ADDRESS P.O. Box 823
Belpre, OH 45714 Parkersburg, WV 26102

JUL 21 1992
Pine Grove

LATITUDE 39° 32' 30"

80° 37' 30"

LONGITUDE

7.5 OGIS topo location

7.5' loc 2.36 S 15' loc _____
 .42 W (calc.) _____

Company _____

Farm J Mills 114 _____

Quad Pine Grove _____

County Wetzel _____

District Grant _____

WELL LOCATION MAP

File No. 103-1507