

WW-7
8-30-06

4710301572P



West Virginia Department of Environmental Protection
Office of Oil and Gas
WELL LOCATION FORM: GPS

API: 47-103-01572 WELL NO.: 7236

FARM NAME: I. D. MORGAN

RESPONSIBLE PARTY NAME: WEST VIRGINIA LAND RESOURCES INC.

COUNTY: WETZEL DISTRICT: GRANT

QUADRANGLE: BIG RUN W.VA

SURFACE OWNER: MAGNOLIA LAND PARTNERS LLC.

ROYALTY OWNER: _____

UTM GPS NORTHING: 4,372,762 m 1079.12'

UTM GPS EASTING: 539,719 m GPS ELEVATION: 329 m

The Responsible Party named above has chosen to submit GPS coordinates in lieu of preparing a new well location plat for a plugging permit or assigned API number on the above well. The Office of Oil and Gas will not accept GPS coordinates that do not meet the following requirements:

1. Datum: NAD 1983, Zone: 17 North, Coordinate Units: meters, Altitude: height above mean sea level (MSL) – meters.
2. Accuracy to Datum – 3.05 meters
3. Data Collection Method:

Survey grade GPS _____ : Post Processed Differential _____

Real-Time Differential _____

Mapping Grade GPS X : Post Processed Differential X

Real-Time Differential _____

4. Letter size copy of the topography map showing the well location.

I the undersigned, hereby certify this data is correct to the best of my knowledge and belief and shows all the information required by law and the regulations issued and prescribed by the Office of Oil and Gas.

[Signature]
Signature

Professional Surveyor
Title

MAY 24, 2021
Date

RECEIVED
Office of Oil and Gas

JUL 26 2021

WV Department of
Environmental Protection

08/27/2021

Well# 7236

BIG RUN WV 7.5' Quad

Scale: 1" = 500'



BM
871

Price

Well# 7236

900

1200

RECEIVED
Office of Oil and Gas

JUL 26 2021

WV Department of
Environmental Protection

1485

PIPELINE

PIPELINE

08/27/2021

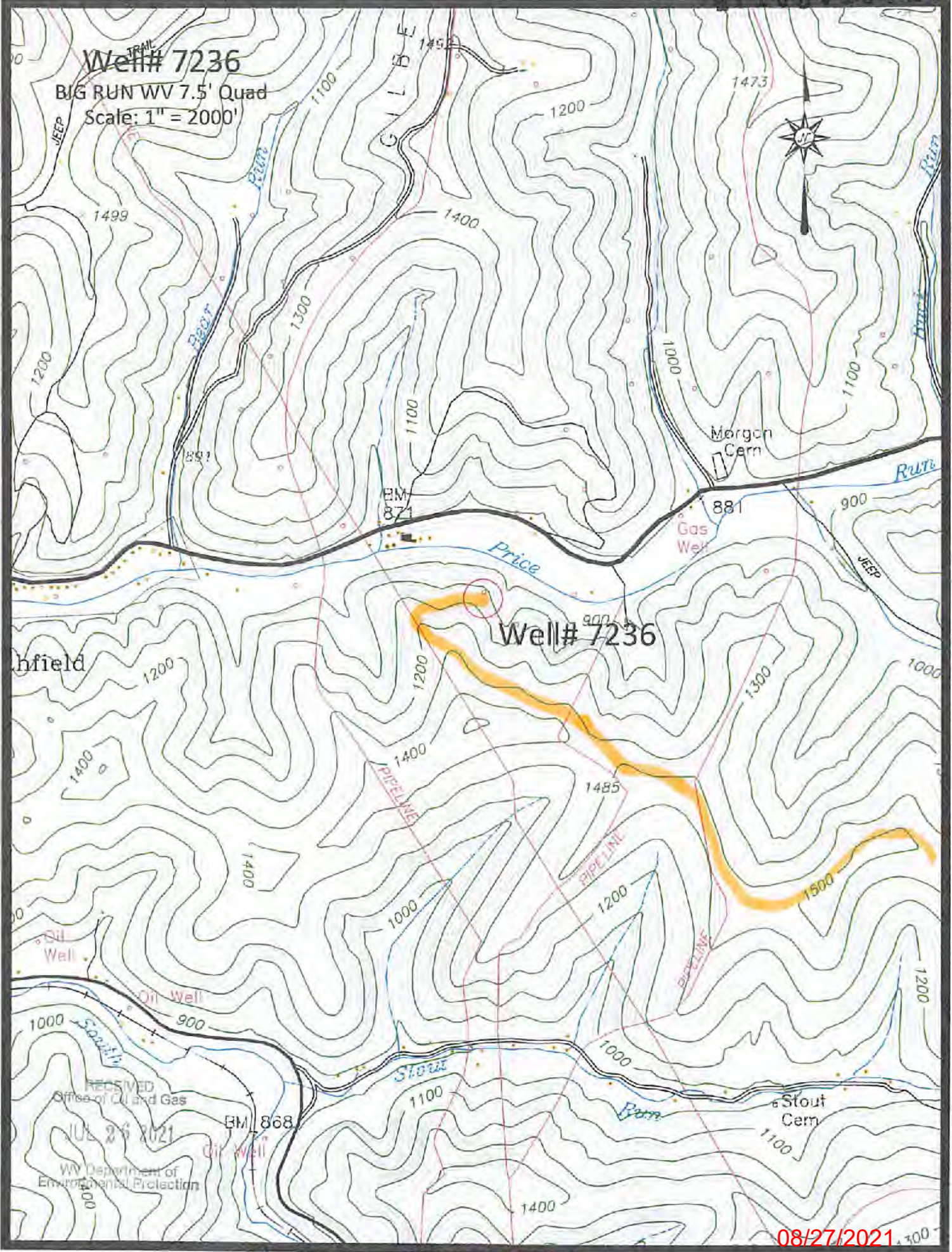
Aricee Road



Well# 7236

BIG RUN WV 7.5' Quad

Scale: 1" = 2000'



08/27/2021

Arrow Road

4710301572P

32'30"

76

75

74

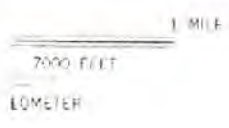
73

39° 30'

(WALLACE)
682 14 20




WELL #7236
 900'








RECEIVED
Office of Oil and Gas

JUL 26 2021

WV Department of
Environmental Protection

ROAD CLASSIFICATION

- Heavy-duty 
- Medium-duty 
- Light-duty 
- Unimproved dirt 
- Slate Route 

BIG RUN, W. VA.

SECTION 14 LITTLETON 15' QUADRANGLE

"Big Run; WV" Scale: 1" = 0.379Mi 610Mt 2,000Ft, 1 Mi = 2,640', 1 cm = 240Mt

08/27/2021