

West Virginia Department of Environmental Protection
Office of Oil & Gas
WELL LOCATION FORM: GPS

API: 47- 103 - 1648 P WELL NO: No.21
FARM NAME: L.S. Hoyt
RESPONSIBLE PARTY NAME: East Resources, Inc.
COUNTY: Wetzel DISTRICT: Grant
QUADRANGLE: Pine Grove 7.5'
SURFACE OWNER: Dallison Lumber Inc.
ROYALTY OWNER: East Resources, Inc. et al.
UTM GPS NORTHING: 4,383,472 (NAD 27)
UTM GPS EASTING: 530,236 (NAD 27) GPS ELEVATION: 292 m.

The Responsible Party named above has chosen to submit GPS coordinates in lieu of preparing a new well location plat for a plugging permit on the above well. The Office of Oil & Gas will not accept GPS coordinates that do not meet the following requirements:

1. Datum: NAD 1983, Zone:17 North, Coordinate Units: meters, Altitude: height above mean sea level (MSL) - meters.
2. Accuracy to Datum - 3.05 meters
3. Data Collection Method:

Survey Grade GPS Post Processed Differential
Real-Time Differential
Mapping Grade GPS Post Processed Differential
Real-Time Differential

RECEIVED
Office of Oil & Gas
JUN 16 2011
West Virginia Department of Environmental Protection

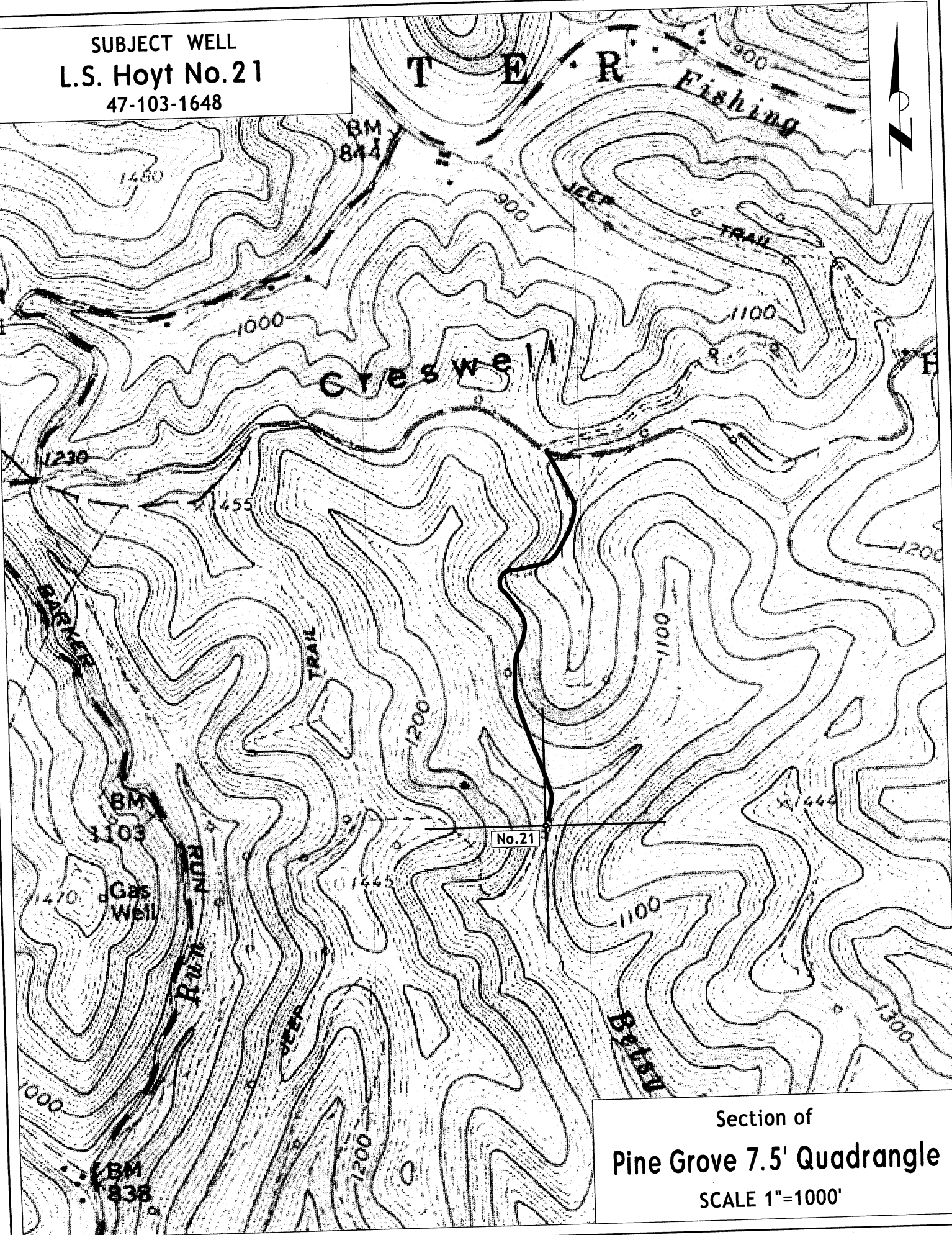
I the undersigned, hereby certify this data is correct to the best of my knowledge and belief and shows all the information required by law and the regulations issued and prescribed by the Office of Oil and Gas.

 Timothy P. Roush
Signature

Professional Surveyor
Title

June 9, 2011
Date

SUBJECT WELL
L.S. Hoyt No. 21
47-103-1648



Section of
Pine Grove 7.5' Quadrangle
SCALE 1"=1000'