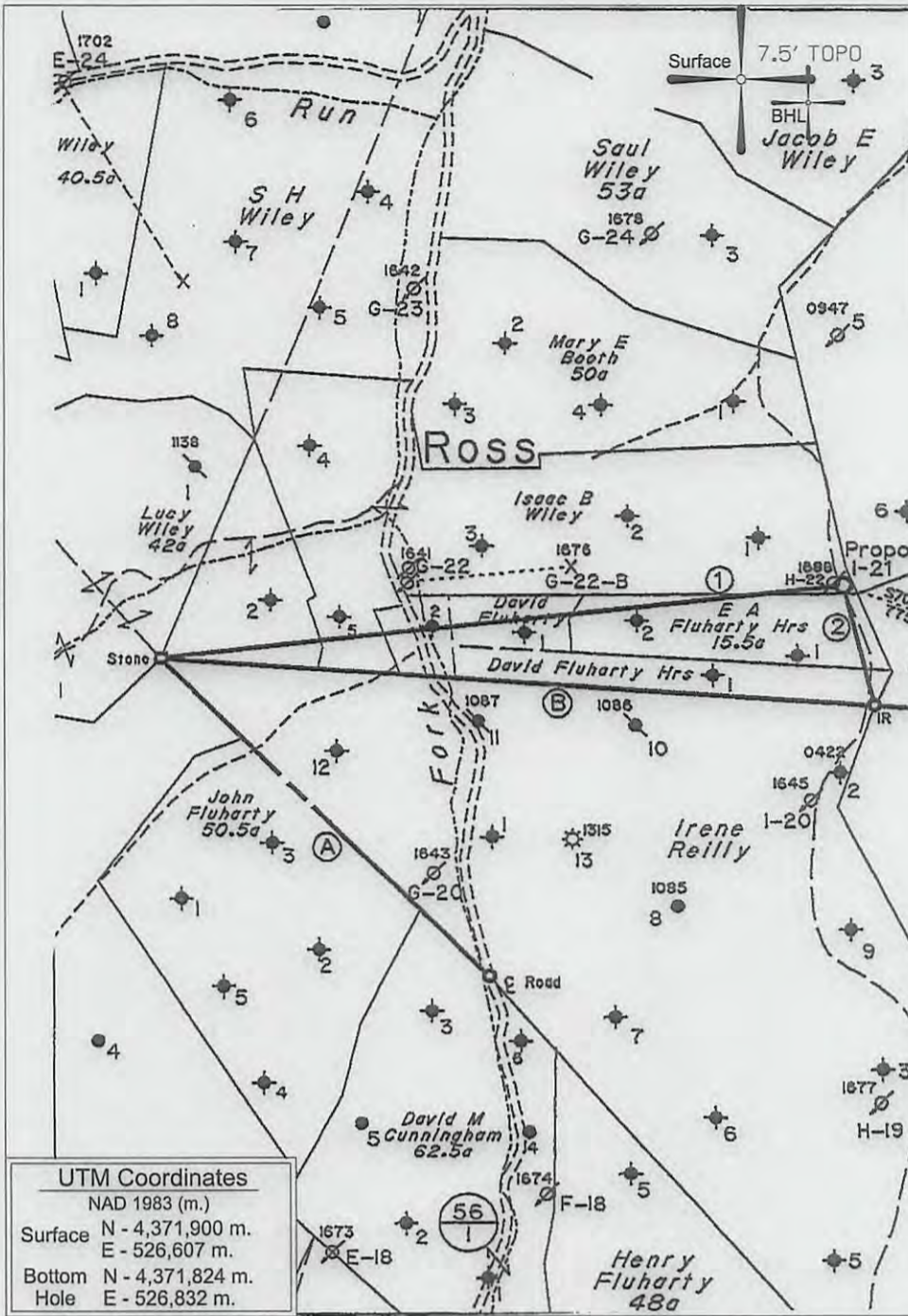


PLAT NOTES

- The drawing shown hereon is from the original drilling permit plat dated 6-3-97.
- This plat has been updated to show current surface ownership and as-drilled Latitude & Longitude.
- Latitude & Longitude shown was measured by DGPS - Sub-Meter Mapping Grade (NAD 1927)



**UTM Coordinates**  
 NAD 1983 (m.)  
 Surface N - 4,371,900 m.  
 E - 526,607 m.  
 Bottom N - 4,371,824 m.  
 Hole E - 526,832 m.

**CALL TABLE**

(A)	N41° 30'W	2584'
(B)	S86° 13'E	3910.5'
(C)	S86° 13'E	5307.0'

**WELL TIES**

(1)	N83° 48'E	3753'
(2)	N14° 30'W	685'

**LOCATION REFERENCES**

— DENOTES LOCATION OF WELL ON UNITED STATES TOPOGRAPHIC MAPS.

FILE NO. \_\_\_\_\_  
 MAP NO. \_\_\_\_\_ N \_\_\_\_\_ S \_\_\_\_\_ E \_\_\_\_\_ W \_\_\_\_\_  
 SCALE \_\_\_\_\_ 1" = 1000'  
 MINIMUM DEGREE OF ACCURACY \_\_\_\_\_ Sub-Meter  
 PROVEN SOURCE OF ELEVATION \_\_\_\_\_ DGPS Survey  
 (Sub-Meter Mapping Grade)

I THE UNDERSIGNED, HEREBY CERTIFY THAT THIS PLAT IS CORRECT TO THE BEST OF MY KNOWLEDGE AND BELIEF AND SHOWS ALL THE INFORMATION REQUIRED BY LAW AND THE REGULATIONS ISSUED AND PRESCRIBED BY THE DEPARTMENT OF MINES.

(SIGNED) *[Signature]*  
 TIMOTHY P. ROUSH PS 793



WEST VIRGINIA  
 Division of Environmental Protection  
 Office of Oil and Gas  
 601 57th Street  
 Charleston, West Virginia 25304



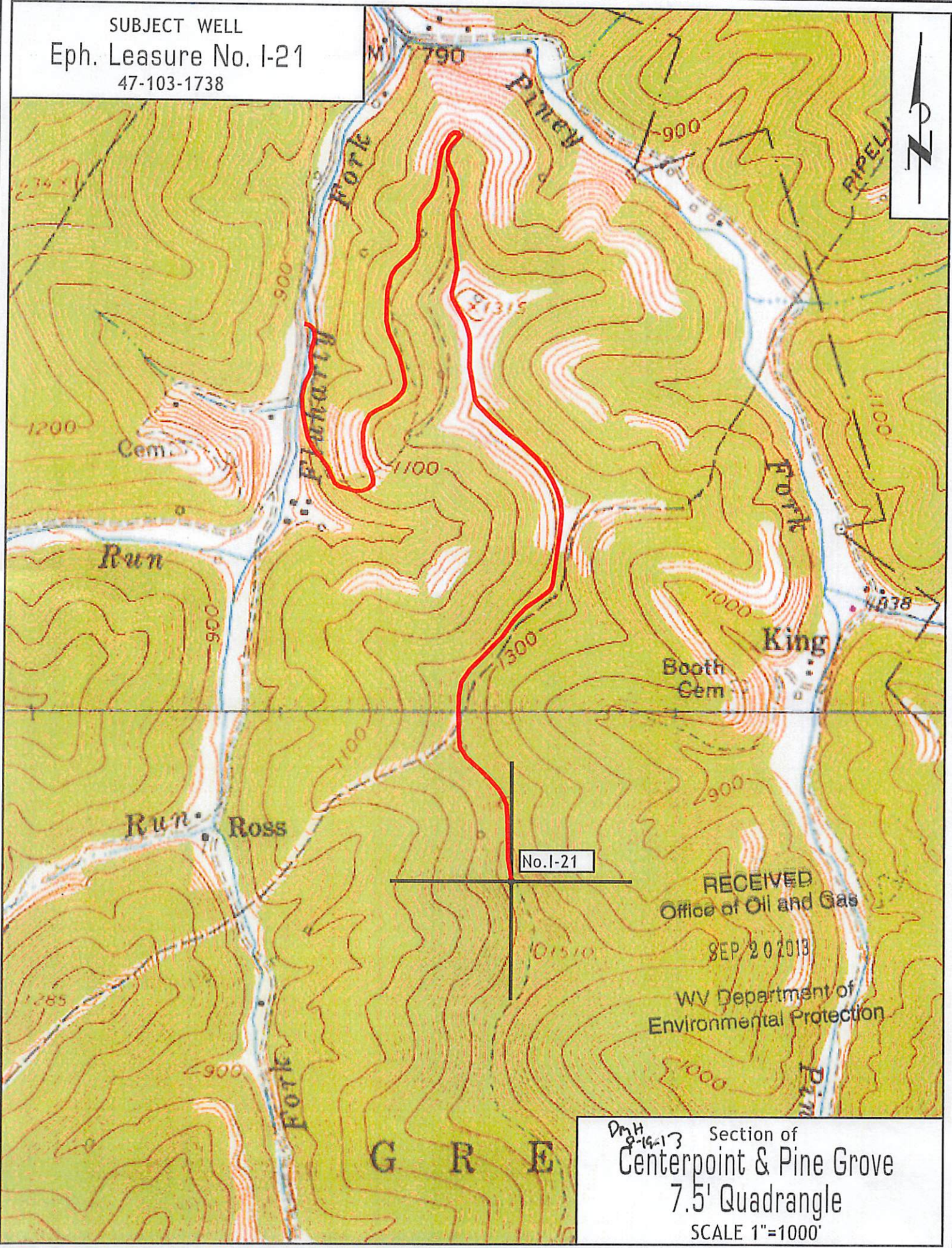
DATE August 7, 2013  
 FARM Eph. Leasure No. 1-21  
 API WELL NO. 47-103-017385

WELL TYPE: OIL \_\_\_\_\_ GAS \_\_\_\_\_ LIQUID INJECTION  WASTE DISPOSAL \_\_\_\_\_  
 (IF "GAS") PRODUCTION \_\_\_\_\_ STORAGE \_\_\_\_\_ DEEP \_\_\_\_\_ SHALLOW \_\_\_\_\_  
 LOCATION: ELEVATION 1,439' WATERSHED Fluharty Fork  
 DISTRICT Green COUNTY Wetzel  
 QUADRANGLE Centerpoint 7.5'  
 SURFACE OWNER John Knight et al ACREAGE 65 Ac.  
 OIL & GAS ROYALTY OWNER HG Energy LLC et al LEASE ACREAGE 101 Ac.  
 LEASE NO. Fee 2837-00  
 PROPOSED WORK: DRILL \_\_\_\_\_ CONVERT \_\_\_\_\_ DRILL DEEPER \_\_\_\_\_ REDRILL \_\_\_\_\_ FRACTURE OR STIMULATE \_\_\_\_\_ PLUG OFF OLD FORMATION \_\_\_\_\_ PERFORATE NEW FORMATION \_\_\_\_\_ OTHER PHYSICAL CHANGE IN WELL (SPECIFY) Convert To Liquid Injection  
 PLUG AND ABANDON \_\_\_\_\_ CLEAN OUT AND REPLUG \_\_\_\_\_  
 TARGET FORMATION Gordon ESTIMATED DEPTH 3,578' MD  
 WELL OPERATOR HG Energy, LLC DESIGNATED AGENT Mike Kirsch  
 ADDRESS 5260 Dupont Road ADDRESS 5260 Dupont Road  
 Parkersburg, WV 26101 Parkersburg, WV 26101

10/25/2013

103017383

SUBJECT WELL  
Eph. Lease No. I-21  
47-103-1738



RECEIVED  
Office of Oil and Gas  
SEP 20 2013  
WV Department of  
Environmental Protection

DmH  
8-19-13 Section of  
Centerpoint & Pine Grove  
7.5' Quadrangle  
SCALE 1"=1000'