

Lat. - 39° 30' 30.0"

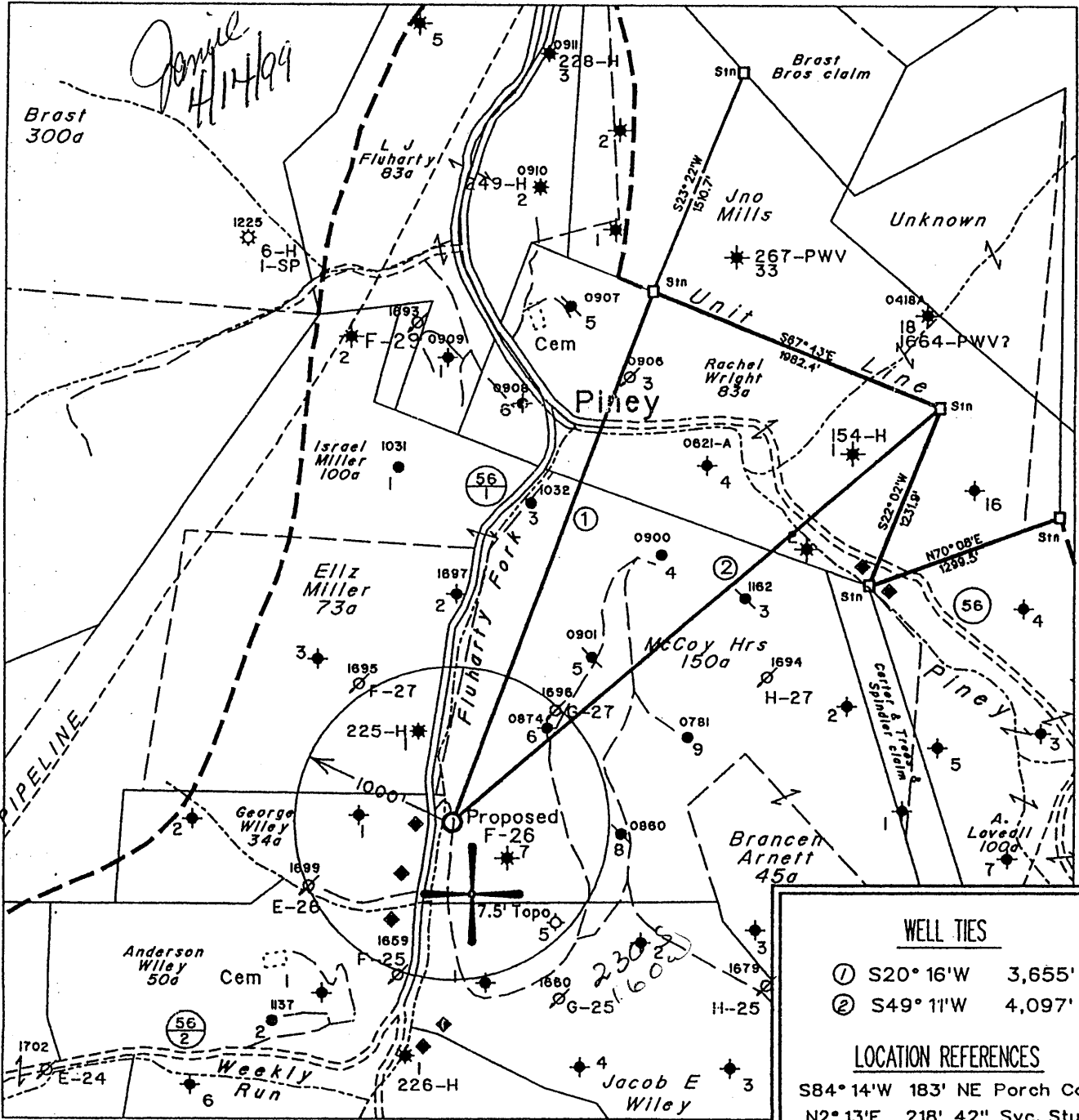
8,425'

LATITUDE 39° 32' 30"

LONGITUDE 80° 40' 00"

12,125'

Long. = 80° 41' 47.6"



Note: All Known Water Supply Sources Located Within 1000' Of Proposed Well Are Shown

Denotes a Water Supply Source

**WELL TIES**

① S20° 16' W 3,655'

② S49° 11' W 4,097'

**LOCATION REFERENCES**

S84° 14' W 183' NE Porch Corn.  
 N2° 13' E 218' 42" Syc. Stump  
 S14° 50' W 171' 8" W. Cherry

⊙ DENOTES LOCATION OF WELL ON UNITED STATES TOPOGRAPHIC MAPS

FILE NO. 1431

MAP NO. N57 N 5 S E W 4

SCALE 1" = 1000'

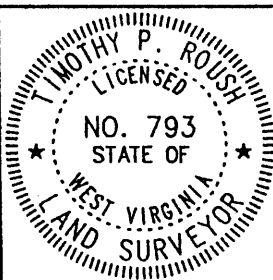
MINIMUM DEGREE OF ACCURACY 1 in 200

PROVEN SOURCE OF ELEVATION USGS BM - 902

I THE UNDERSIGNED, HEREBY CERTIFY THAT THIS PLAT IS CORRECT TO THE BEST OF MY KNOWLEDGE AND BELIEF AND SHOWS ALL THE INFORMATION REQUIRED BY LAW AND THE REGULATIONS ISSUED AND PRESCRIBED BY THE DEPARTMENT OF MINES.

(SIGNED) [Signature]

TIMOTHY P. ROUSH PS 793



**WEST VIRGINIA**  
 Division of Environmental Protection  
 Office of Oil and Gas  
 \*10 McJunkin Road  
 Nitro, West Virginia 25143-2506



DATE February 11, 19 99

FARM McCoy Heirs NO. F-26

API WELL NO. 47-103-01771

WELL TYPE: OIL  GAS  LIQUID INJECTION  WASTE DISPOSAL

(IF "GAS") PRODUCTION  STORAGE  DEEP  SHALLOW

LOCATION: ELEVATION 805' WATERSHED Fluharty Fork

DISTRICT Green COUNTY Wetzel

QUADRANGLE Pine Grove

SURFACE OWNER Coastal Lumber Co. ACREAGE 2.526 Ac.

OIL & GAS ROYALTY OWNER Pennzoil E. & P. Co. et al. LEASE ACREAGE 150 Ac.

LEASE NO. 25040-50

PROPOSED WORK: DRILL  CONVERT  DRILL DEEPER  REDRILL  FRACTURE OR STIMULATE  PLUG OFF OLD FORMATION  PERFORATE NEW FORMATION  OTHER PHYSICAL CHANGE IN WELL (SPECIFY) \_\_\_\_\_

PLUG AND ABANDON  CLEAN OUT AND REPLUG

TARGET FORMATION Gordon ESTIMATED DEPTH 2800'

WELL OPERATOR Pennzoil E. & P. Co. DESIGNATED AGENT Philip S. Ondrusek

ADDRESS P. O. Box 5519 ADDRESS P. O. Box 5519

Vienna, W.Va. 26105 Vienna, W.Va. 26105

APR 19 1999

WET 1771

State of West Virginia  
Division of Environmental Protection  
Section of Oil and Gas

Ar 17

Well Operator's Report of Well Work

Farm name: Coastal Lumber Co

Operator Well No.: McCoy Heirs F-26

LOCATION: Elevation: 805'

Quadrangle: Pine Grove

District: Green  
Latitude: 12,125 Feet south of  
Longitude: 8,425 Feet west of

County: Wetzel  
39 Deg 32 Min 30 Sec.  
80 Deg 40 Min 40 Sec.

Company: EAST RESOURCES, INC.  
P.O. BOX 5519  
VIENNA, WV 26105-5519

Agent: MICHAEL MCCOWN

Inspector: Mike Underwood

Permit Issued: 04/16/99

Well work Commenced: 05/27/99

Well work Completed: 07/15/99

Verbal plugging

permission granted on:

Rotary X Cable      Rig     

Total Depth (feet) 2,814

Fresh water depths (ft) 30'

Salt water depths (ft) NA

Is coal being mined in area (Y/N) N

Coal Depths (ft): NA

Casing & Tubing Size	Used in Drilling	Left in Well	Cement Fill Up Cu. Ft.
8 5/8"	209.00	209.00	135 sks
4 1/2"	2784.20'	2784.20'	275 sks

OPEN FLOW DATA \* waterflood producer

Producing formation Gordon Pay zone depth (ft) 2660-2672  
 Gas: Initial open flow      \* MCF/d Oil: Initial open flow      \* Bbl/d  
 Final open flow      \* MCF/d Final open flow      \* Bbl/d  
 Time of open flow between initial and final tests      Hours  
 Static rock pressure      \* psig (surface pressure) after      \* Hours

Second producing formation      Pay zone depth (ft)       
 Gas: Initial open flow      MCF/d Oil: Initial open flow      Bbl/d  
 Final open flow      MCF/d Final open flow      Bbl/d  
 Time of open flow between initial and final tests      Hours  
 Static rock pressure      psig (surface pressure) after      Hours

NOTE: ON BACK OF THIS FORM, PUT THE FOLLOWING: 1) DETAILS OF PERFORATED INTERVALS, FRACTURING OR STIMULATING, PHYSICAL CHANGE, ETC. 2) THE WELL LOG WHICH IS A SYSTEMATIC DETAILED GEOLOGICAL RECORD OF ALL FORMATIONS, INCLUDING COAL ENCOUNTERED BY THE WELLBORE.

For: EAST RESOURCES, INC.  
By: Ben Alden  
Date: 1/23/02

APR 5 2002

NET 1771

Treatment :

Treated Gordon Perfs 2664-2674 w/500 gals 15% HCl, 256 bbls gelled water and 11000 # 20/40 sand

Well Log :

Sand and Shale	0	352
Sand	352	370
Shale	370	404
Sand	404	454
Shale	454	564
Sand	564	583
Shale	583	1000
Sand	1000	1042
Shale	1042	1102
Sand	1102	1176
Shale	1176	1201
Sand	1201	1244
Shale	1244	1483
Sand	1483	1510
Shale	1510	1584
Sand	1584	1614
Shale	1614	1790
Lime	1790	1900
Big Injun	1900	2050
Shale	2050	2632
Gordon Stray	2632	2650
Shale	2650	2660
Gordon	2660	2672
Shale	2672	2814
TD	2814	