

INSTRUCTIONS

- 1) Attach a photo copy of the location of the well on a 7.5 minute Quadrangle with the corresponding Longitude and Latitude.
- 2) Designate the location of the well with the symbol(+).



RECEIVED
 Environmental Protection
 FEB 23 1998
 Permitting
 Office of Oil & Gas

7400' 80°35'00"

I, the undersigned, hereby certify that this plat is correct to the best of my knowledge and belief.

SIGNED Charles E. Horner
TITLE OWNER

DATE Feb. 18, 1998
OPERATORS WELL NO. 1
API WELL NO. 103-1779-N

STATE OF WEST VIRGINIA
DEPARTMENT OF ENERGY
OIL AND GAS DIVISION

WELL TYPE: OIL GAS LIQUID INJECTION WASTE DISPOSAL
(If "GAS" PRODUCTION STORAGE DEEP SHALLOW

LOCATION: ELEVATION 1220 (est.) (V) WATER SHED Laurel Run
DISTRICT Center COUNTY Wetzel
QUADRANGLE Littleton 438

SURFACE OWNER Coastal Lumber Co. ACREAGE _____
OIL & GAS ROYALTY OWNER List Attached LEASE ACREAGE 54
LEASE NO. _____

PRODUCING FORMATION Gordon Sand TOTAL DEPTH 3196

WELL OPERATOR Charles Horner DESIGNATED AGENT _____

ADDRESS RDS Box 195 ADDRESS _____

Cameron W. 4 26023 ADDRESS _____

Office of Oil and Gas
1356 Hansford Street
Charleston, WV 25301
Phone: (304) 558-6075
Phone: (304) 558-6076
Fax: (304) 558-6047

West Virginia Department of Environmental Protection

Bob Wise,
Governor

Michael O. Callaghan
Secretary

April 01, 2002

FINAL INSPECTION REPORT

WELL PERMIT RELEASED

HORNER, CHARLES,

The FINAL INSPECTION REPORT for the permit, API Well Number: 47-10301779, issued to HORNER, CHARLES, and listed below has been received in this office, and reclamation requirements approved. The well designated by the permit number below has been released under reclamation and will remain under your bond.



James Martin
Chief,
Office of Oil and Gas
4/1/02

Operator: HORNER, CHARLES

Operator's Well No: PYLES 1

Farm Name: PYLES, CHARLES

API Well Number: 47-10301779

Date Issued: 05/21/1999

39° 42' 30"

LATITUDE

80° 08'

LONGITUDE

+

7'5 OGIS topo location

7.5' loc _____ 15' loc _____
_____ (calc.) _____

Company CHARLES E. HORNER

Farm Charlie Pyles

Quad Littleton

County Wetzel

District Center

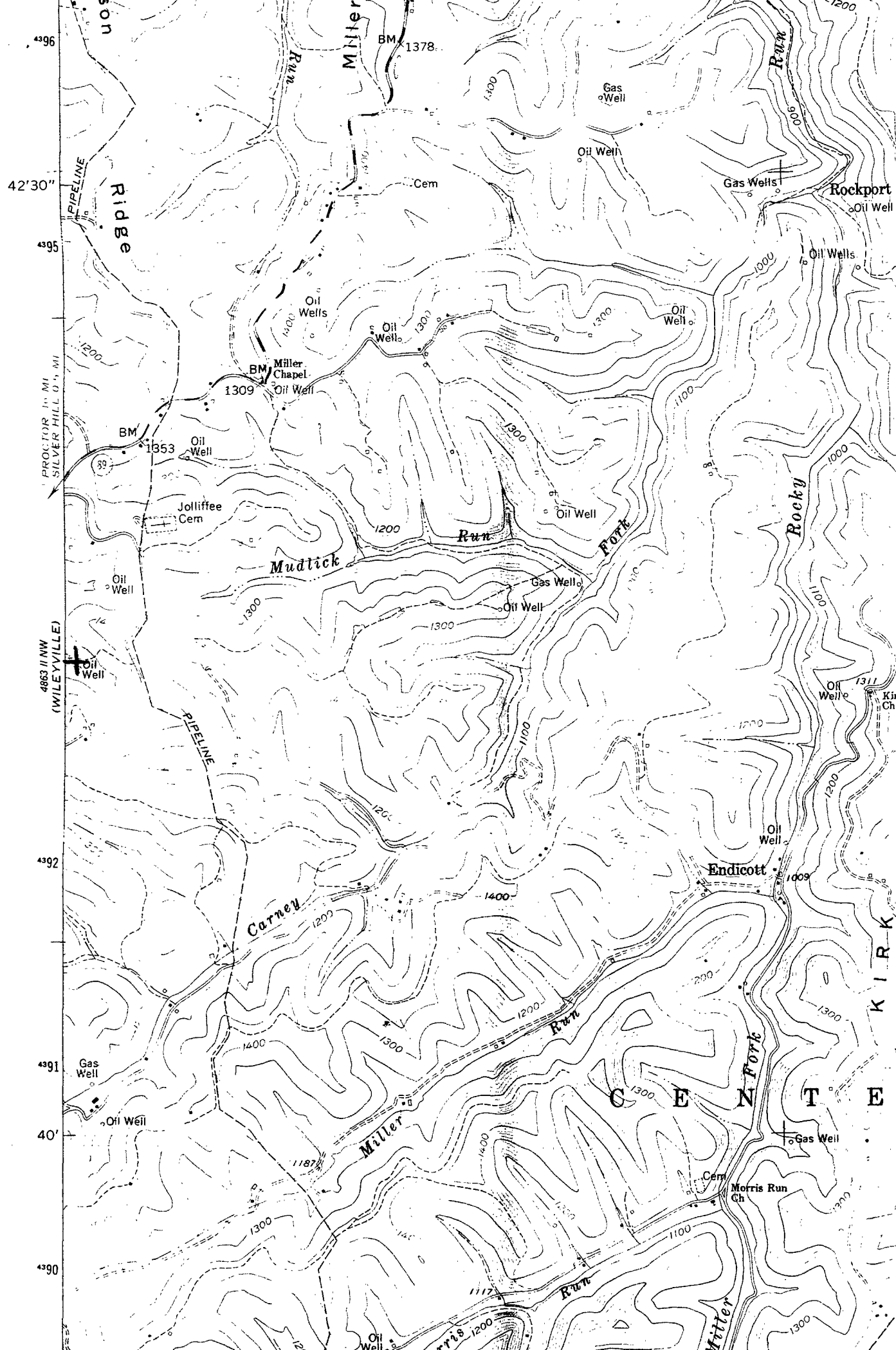
WELL LOCATION MAP

File No. _____

Charlie Pyles

Elva A. Chambers ETAL

Wilda H. Allen



4396

42°30'

4395

PROCTOR 1/4 MI
SILVER HILL 0 1/4 MI

4863 II NW
(WILEYVILLE)

4392

4391

40'

4390

Ridge

Mudtick Run

Carney Run

Miller Run

Miller Run

Run

Run

Fork

Run

Rocky Run

Endicott

C E N T E

K I R K

Rockport

BM 1378

BM Miller Chapel
1309

BM 1353

1311

1009

1187

1117

Oil Well

Gas Wells

Oil Well

Oil Wells

Oil Wells

Oil Well

Oil Well

Jolliffe Cem

Gas Well

Oil Well

Oil Well

Oil Well

Oil Well

Oil Well

Gas Well

Oil Well

Gas Well

Cem

Morris Run Ch

Oil Well

Oil Well

son

PIPELINE

Run

Oil Wells

Oil Well

Oil Well

Oil Well

Oil Well

Oil Well

Oil Well

Oil Well

Oil Well

Run

Run

Run

Run

Run

Run

Run

Run

Run

Run

Cem

Oil Well

Oil Well

Oil Well

Oil Well

Oil Well

Oil Well

Oil Well

Oil Well

Oil Well

Gas Well

Oil Well

Oil Well

Oil Well

Oil Well

Oil Well

Oil Well

Oil Well

Oil Well

Oil Well

Oil Well

Oil Well

Oil Well

Oil Well

Oil Well

Oil Well

Oil Well

Oil Well

Oil Well

Oil Well

Gas Wells

Oil Well

Oil Well

Oil Well

Oil Well

Oil Well

Oil Well

Oil Well

Oil Well

Oil Well

Oil Well

Oil Well

Oil Well

Oil Well

Oil Well

Oil Well

Oil Well

Oil Well

Oil Well

Oil Well

Oil Well

Oil Well

Oil Well

Oil Well

Oil Well

Oil Well

Oil Well

Oil Well

Oil Well

Oil Well

Oil Well

Oil Well

Oil Well

Oil Well

Oil Well

Oil Well

Oil Well

Oil Well

Oil Well

Oil Well

RECEIVED
Division of
Environmental Protection

FEB 23 1983

Permitting
Office of Oil & Gas