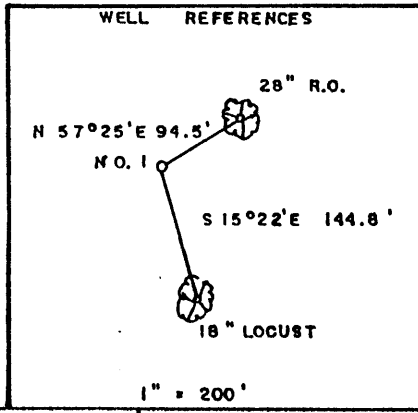
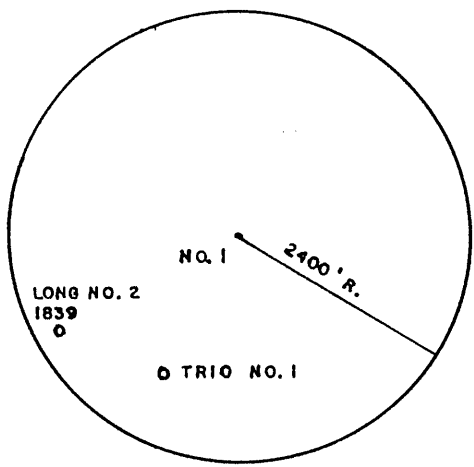
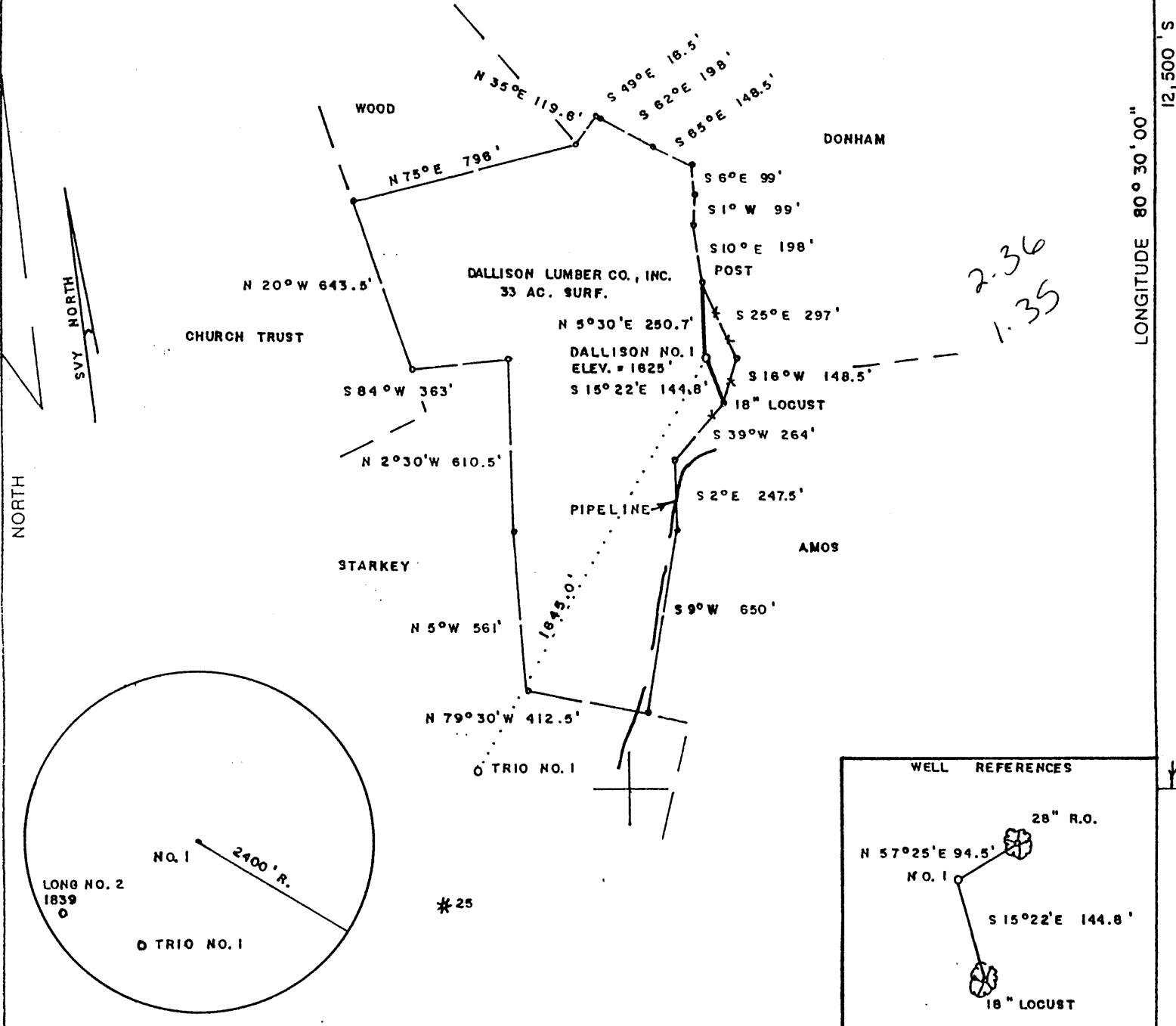


7180' W

LATITUDE 39° 40' 00"

# DALLISON LEASE 33 AC.



(+) DENOTES LOCATION OF WELL ON UNITED STATES TOPOGRAPHIC MAPS

FILE NO. \_\_\_\_\_  
 DRAWING NO. \_\_\_\_\_  
 SCALE 1" = 500'  
 MINIMUM DEGREE OF ACCURACY 1/200  
 PROVEN SOURCE OF ELEVATION BM - SW of LEASE  
 ELEV. = 1322'

I THE UNDERSIGNED, HEREBY CERTIFY THAT THIS PLAT IS CORRECT TO THE BEST OF MY KNOWLEDGE AND BELIEF AND SHOWS ALL THE INFORMATION REQUIRED BY LAW AND THE REGULATIONS ISSUED AND PRESCRIBED BY THE DEPARTMENT OF ENERGY.  
 (SIGNED) Mark C. Echard  
 R.P.E. \_\_\_\_\_ L.L.S. 490



STATE OF WEST VIRGINIA  
 Division of Environmental Protection  
 OFFICE OF OIL AND GAS

DATE JULY 10, 2001  
 OPERATOR'S WELL NO. NO. 1  
 API WELL NO. 47 103 01857

WELL TYPE: OIL \_\_\_ GAS  LIQUID INJECTION \_\_\_ WASTE DISPOSAL \_\_\_  
 (IF "GAS") PRODUCTION  STORAGE \_\_\_ DEEP \_\_\_ SHALLOW \_\_\_  
 LOCATION: ELEVATION 1625' WATERSHED SUGAR RUN OF FISH CREEK  
 DISTRICT CENTER COUNTY WETZEL  
 QUADRANGLE LITTLETON 7.5'

SURFACE OWNER DALLISON LUMBER CO., INC. ACREAGE 33  
 OIL & GAS ROYALTY OWNER DALLISON LUMBER CO., INC. LEASE ACREAGE 33  
 LEASE NO. \_\_\_\_\_

PROPOSED WORK: DRILL  CONVERT  DRILL DEEPER \_\_\_ REDRILL \_\_\_ FRACTURE OR  
 STIMULATE \_\_\_ PLUG OFF OLD FORMATION \_\_\_ PERFORATE NEW  
 FORMATION \_\_\_ OTHER PHYSICAL CHANGE IN WELL (SPECIFY) \_\_\_\_\_

PLUG AND ABANDON \_\_\_ CLEAN OUT AND REPLUG \_\_\_  
 TARGET FORMATION SPEECHLEY ESTIMATED DEPTH 3900'  
 WELL OPERATOR D.A.C. DESIGNATED AGENT KENNETH MASON  
 ADDRESS P.O. BOX 99 ADDRESS P.O. BOX 99  
ALMA, WV 26320 ALMA, WV 26320

COUNTY NAME WETZEL  
PERMIT 1857

6-6 45

AUG 10 2001

State of West Virginia  
Department of Environmental Protection  
Office of Oil and Gas

*Aut*

Well Operator's Report of Well Work

Farm name: Dallison Lumber Co., Inc. Operator Well No. Dallison #1

LOCATION: Elevation: 1625' Quadrangle: Littleton 7.5'

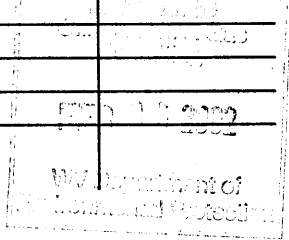
District: Center County: Wetzel

Latitude: 12.500 Feet South of 39 Deg. 40 Min. 00 Sec.

Longitude 7180' Feet West of 80 Deg. 30 Min. 00 Sec.

Company: D.A.C.

	Casing & Tubing	Used in drilling	Left in well	Cement fill up Cu. Ft.
Address: P.O. Box 99	9-5/8"	200'	200'	55 sks
Alma, WV 26320	7"	1925'	1925'	100 sks
Agent: Kenneth Mason	4-1/2"	3900'	3900'	160 sks
Inspector: Randal Mick				
Date Permit Issued: 8/8/2001				
Date Well Work Commenced: 10/27/01				
Date Well Work Completed: 11/03/01				
Verbal Plugging:				
Date Permission granted on:				
Rotary X Cable Rig				
Total Depth (feet): 3685'				
Fresh Water Depth (ft.): 219				
Salt Water Depth (ft.):				
Is coal being mined in area (N/Y)? N				
Coal Depths (ft.): 1348'				



OPEN FLOW DATA

Producing formation Gordon Pay zone depth (ft) 3456-3550  
 Gas: Initial open flow 82 MCF/d Oil: Initial open flow \_\_\_\_\_ Bbl/d  
 Final open flow 400 MCF/d Final open flow \_\_\_\_\_ Bbl/d  
 Time of open flow between initial and final tests \_\_\_\_\_ Hours  
 Static rock Pressure 625 psig (surface pressure) after \_\_\_\_\_ Hours

Second producing formation Big Injun Pay zone depth (ft) 2688-2756  
 Gas: Initial open flow \* \_\_\_\_\_ MCF/d Oil: Initial open flow \_\_\_\_\_ Bbl/d  
 Final open flow \* \_\_\_\_\_ MCF/d Final open flow \_\_\_\_\_ Bbl/d  
 Time of open flow between initial and final tests \_\_\_\_\_ Hours  
 Static rock Pressure \* \_\_\_\_\_ psig (surface pressure) after \_\_\_\_\_ Hours

\* = commingled zones

NOTE: ON BACK OF THIS FORM PUT THE FOLLOWING: 1). DETAILS OF PERFORATED INTERVALS, FRACTURING OR STIMULATING, PHYSICAL CHANGE, ETC. 2). THE WELL LOG WHICH IS A SYSTEMATIC DETAILED GEOLOGICAL RECORD OF ALL FORMATIONS, INCLUDING COAL ENCOUNTERED BY THE WELLBORE.

Signed: D.A.C.  
 By: Kenny Mason

MAR 03 2002

WET 1857

API # 47-103-01857

Dallison #1

Stage #1	Perfs	sand sks
Gordon/4 <sup>th</sup> Sd	3456-3550	106 sks
Big Injun	2684-2742	305 sks

ISIP = 2300#

Drillers Log

Electric Log Tops

Sand	0-30'
Sd/Sh	30'-330'
RR	330'-336'
Sd/Sh	336'-448'
RR	448'-670'
Sd/Sh	670'-689'
RR	689'-735'
Sd/Sh	735'-830'
RR	830'-852'
Sd/Sh	852'-1006'
RR	1006'-1020'
Sand	1020'-1348'
Coal	1348'-1432'
Sd/Sh	1432'-1917'
RR/Sh	1917'-1926'
Sh/Coal	1926'-2605'
B.Lime	2605'-2835'
Injun	2835'-2850'
Sand	2850'-3430'
Sd/Sh	3430'-3460'
Gordon	3430'-3460'
Sd/Sh	3460'-3529'
4 <sup>th</sup> Sand	3529'-3555'
Sd/Sh	3555'-3885'
TD	3885'

Big Lime	2602
Gordon	3448

damp 2219'  
gas ck @ 2737 = 81 mcfs  
gas ck @ 2829 = 735 mcfs  
gas ck @ 3489 = 735 mcfs