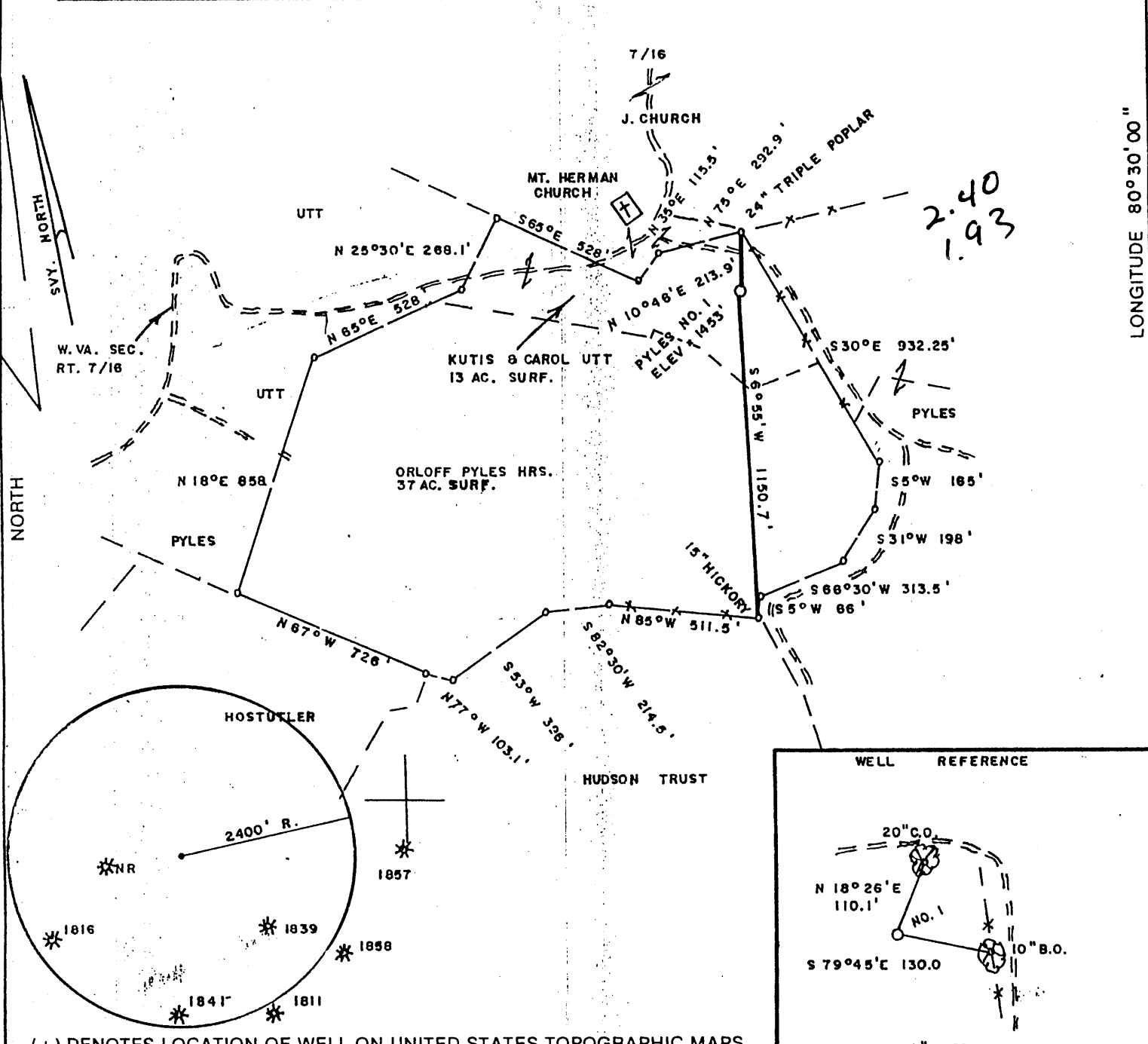
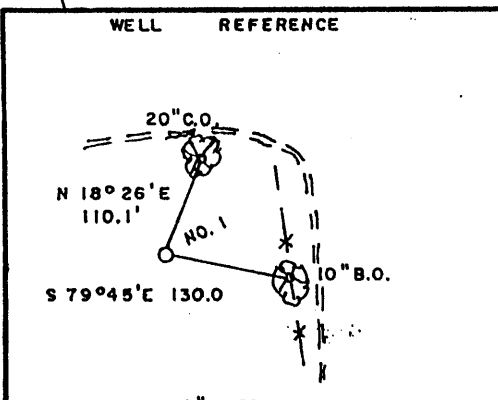
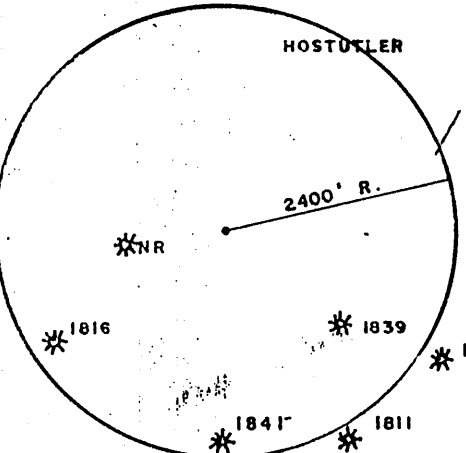


**PYLES LEASE 50 AC.**



LONGITUDE 80° 08' 00\"/>

2.40  
1.93



(+) DENOTES LOCATION OF WELL ON UNITED STATES TOPOGRAPHIC MAPS

FILE NO. \_\_\_\_\_  
DRAWING NO. \_\_\_\_\_  
SCALE 1" = 500'  
MINIMUM DEGREE OF ACCURACY 1/200  
PROVEN SOURCE OF ELEVATION BM SOUTH OF LEASE  
ELEV. = 1322'

I THE UNDERSIGNED, HEREBY CERTIFY THAT THIS PLAT IS CORRECT TO THE BEST OF MY KNOWLEDGE AND BELIEF AND SHOWS ALL THE INFORMATION REQUIRED BY LAW AND THE REGULATIONS ISSUED AND PRESCRIBED BY THE DEPARTMENT OF ENERGY.  
(SIGNED) Mark C. Echard  
R.P.E. \_\_\_\_\_ L.L.S. 490

MARK C. ECHARD  
LICENSED  
260,400  
STATE OF WEST VIRGINIA  
LAND SURVEYOR  
PLACE SEAL HERE

STATE OF WEST VIRGINIA  
Division of Environmental Protection  
OFFICE OF OIL AND GAS

DATE JUNE 10, 2002  
OPERATOR'S WELL NO. PYLES NO. 1  
API WELL NO. 47 103 01885

WELL TYPE: OIL  GAS  LIQUID INJECTION  WASTE DISPOSAL   
(IF "GAS,") PRODUCTION  STORAGE  DEEP  SHALLOW   
LOCATION: ELEVATION 1453' WATERSHED KNOB FORK  
DISTRICT CENTER COUNTY WETZEL  
QUADRANGLE LITTLETON 7.5'

SURFACE OWNER KURTIS and CAROL UTT ACREAGE 13  
OIL & GAS ROYALTY OWNER ORLOFF PYLES HRS. LEASE ACREAGE 50  
LEASE NO. \_\_\_\_\_

PROPOSED WORK: DRILL  CONVERT  DRILL DEEPER  REDRILL  FRACTURE OR STIMULATE  PLUG OFF OLD FORMATION  PERFORATE NEW FORMATION  OTHER PHYSICAL CHANGE IN WELL (SPECIFY) \_\_\_\_\_

PLUG AND ABANDON  CLEAN OUT AND REPLUG   
TARGET FORMATION SPEECHLEY ESTIMATED DEPTH 3900'  
WELL OPERATOR D.A.C. DESIGNATED AGENT MR. KENNETH MASON  
ADDRESS P.O. BOX 99 ADDRESS P.O. BOX 99  
ALMA, WV 26320 ALMA, WV 26320

COUNTY NAME WET  
PERMIT 1885

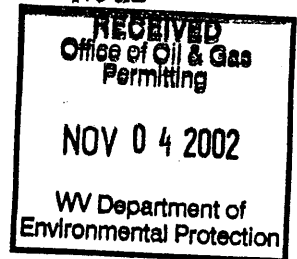
State of West Virginia  
Division of Environmental Protection  
Section of Oil and Gas

Reviewed Ar 13

Well Operators Report of Well Work

Farm name: Pyles Operator Well #: Pyles #1  
 Location: Elevation: 1,453' Quadrangle: Littleton 7.5'  
 District: Center County: Wetzel  
 Latitude 12,650 feet south of 39 Deg. 40 Min. 00 Sec.  
 Longitude 10,200 feet west of 80 Deg. 30 Min. 00 Sec.  
 Company: Drilling Appalachian Corporation  
 P.O. Box 99  
 Alma WV 26320

Agent:	Kenneth Mason	Casing	Used in Drilling	Left in Well	Cement Fill up
Inspector:	Randall Mick				
Permit Issued:	07-02-02	9 5/8	225	215	68 sks
Well Work Commenced:	07-15-02				
Well Work Completed:	07-22-02	6 5/8	1775	1727	100 sks
Verbal Plugging					
Permission granted on:		4 1/2	3784	3528	170 sks
Rotary X Cable	___ Rig				
Total Depth (ft)	3784'				
Fresh water depth (ft)	48'				
Salt water depth (ft)	N/A				
Is coal being mined in are (Y/N)	N				
Coal depths (ft)	N/A				



OPEN FLOW DATA

Producing formation	4 <sup>th</sup> /	Pay zone depths (ft)	3350'-3362'
Gas: Initial open flow	odor mcf/d	Oil: Initial open flow	bbls/day
Final open flow	160 mcf/d	Final open flow	bbls/day
Time of open flow between initial and final tests			48 Hours
Static rock pressure	250# psig (surface pressure) after		48 Hours

Other producing formation		Pay zone depths (ft)	
Gas: Initial open flow	x mcf/day	Oil: Initial open flow	bbls/day
Final open flow	x mcf/day	Final open flow	bbls/day
Time of open flow between initial and final tests			48 Hours
Static rock pressure	psig (surface pressure) after		48 Hours

X = commingled zones

For: Drilling Appalachian Corporation

By: Kenneth R. Mason  
Date: 10-30-02

NOV 27 2002

MET 1885

Fyles  
07-16-02

Stage #1	perfs	sand	avg rate	isip
4 <sup>th</sup> Gordon	3304-3360 15 holes	300 sks	24 bpm	3020#

Drillers Log

SD/Sh	0	10
Sd	10	320
RR	320	330
Sd/Sh	330	1302
RR	1302	1360
Sd/Sh	1360	1450
RR	1450	1476
Sd/Sh	1476	2149
Lime	2149	2167
Sd/Sh	2167	2425
Big Lime	2425	2528
Sd	2528	2553
Sd/Sh	2553	3285
Sd	3285	3317
Sd/Sh	3317	3784
Td	3629	

damp @ 620'

gas ck @ 3108 - odor

gas ck @ 3748' =60mcfs

Electric Log Tops

Big Lime	2420
Berca	2820
Gordon	3253

