

WW-7
5-02

RECEIVED
Office of Oil & Gas
Permitting
AUG 01 2002
WV Department of
Environmental Protection



West Virginia Department of Environmental Protection
Office of Oil and Gas
WELL LOCATION FORM: GPS

API: 103-01900-N-P WELL NO.: # 66

FARM NAME: MILLS

RESPONSIBLE PARTY NAME: QUAKER STATE OIL REF. CORP.

COUNTY: WETZEL DISTRICT: GRAFT 4

QUADRANGLE: PINE GROVE 648

SURFACE OWNER: WVDNR

ROYALTY OWNER: WVDNR

UTM GPS NORTHING: N 39° 30.724 4,373,674,460

UTM GPS EASTING: W 80° - 38.446 530896.69 GPS ELEVATION: 1010 FT.

Well presumed plugged
Monument erected on approximate location

The Responsible Party named above has chosen to submit GPS coordinates in lieu of preparing a new well location plat for a plugging permit on the above well. The Office of Oil and Gas will not accept GPS coordinates that do not meet the following requirements:

1. Datum: NAD 1983, Zone: 17 North, Coordinate Units: meters, Altitude: height above mean sea level (MSL) - meters.
2. Accuracy to Datum - 3.05 meters
3. Data Collection Method:

Survey grade GPS _____: Post Processed Differential _____
Real-Time Differential _____

Mapping Grade GPS _____: Post Processed Differential _____
Real-Time Differential _____

calc 7.5' loc

1905 39° 32' 30"

0,836 80° 37' 30"

I the undersigned, hereby certify this data is correct to the best of my knowledge and belief and shows all the information required by law and the regulations issued and prescribed by the Office of Oil and Gas.

Robert J. Payne
Signature

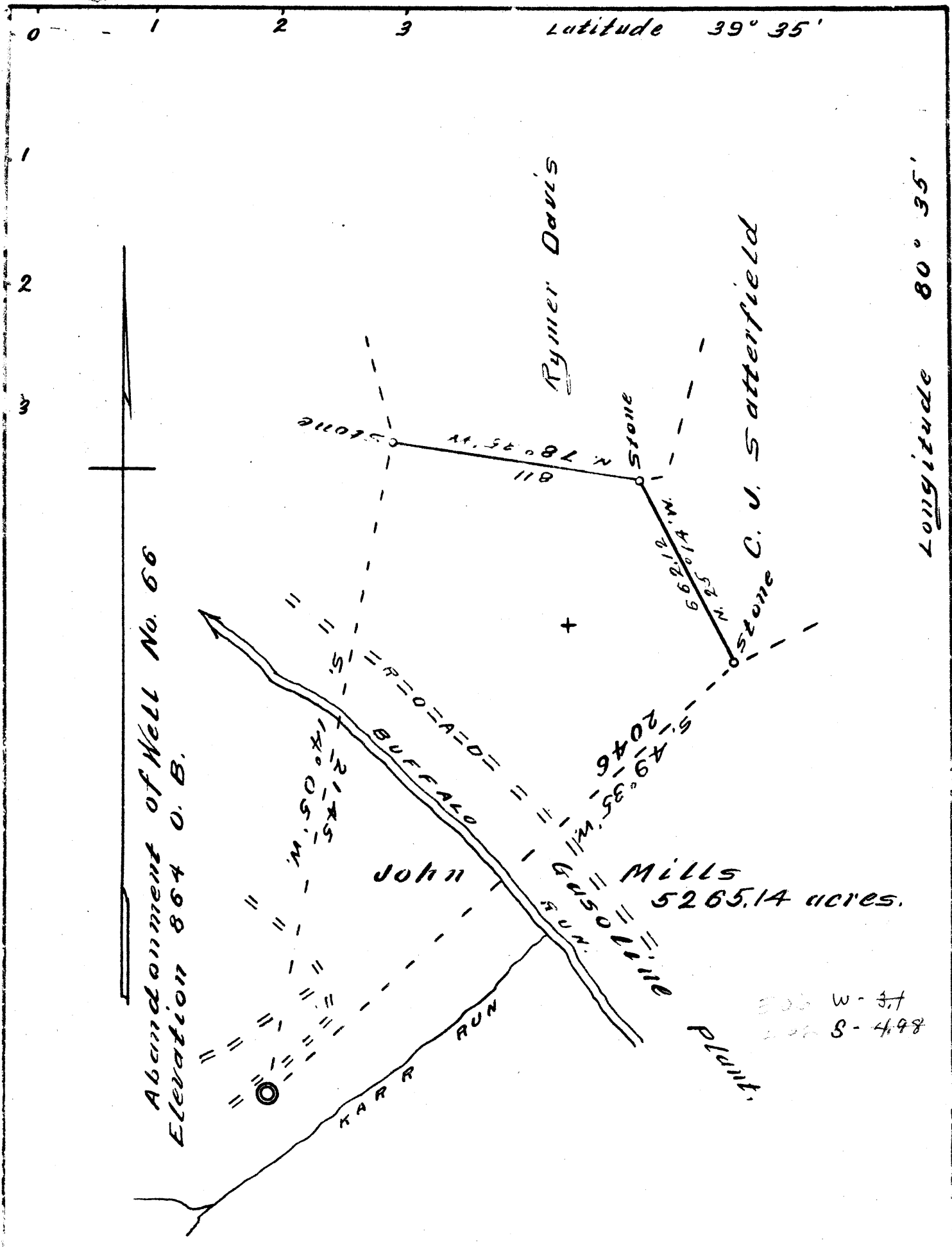
PZH-QS PRJ. Supt.
Title

7-11-02
Date

was 103 30 319 ✓

*WR-38 rec'd at WDEP
9/24/02*

WET 1900-P



COMPANY E.H. Jennings Bro's
 ADDRESS Pittsburgh, Penn.
 FARM John Mills
 TRACT One Acres 5265.14
 WELL No. 66 abandonment
 QUADRANGLE Littleton
 COUNTY Wetzel
 DISTRICT Grant
 ENGINEER David Weed
 REGISTRATION No. 233-16-5767
 DATE April 3rd 1940
 SCALE 1 inch = 400 feet.

State of West Virginia
 Department of Mines
 Oil & Gas Division
 Charleston
 Well Location Map
 File No. WET-319A
 Nov 1950

Grant District, Wetzel County, W. Va.

Nov 1950

Kanawha Oil Co.

Completed, July 14, 1900.

Elevation, 965'±

10" casing, 359'; 8", 1265'; 6-5/8", 2030'; 5-3/16", 2172'

Orig. prod. 75 bbls. per hour; 2212 bbls.

Present prod. 3 bbls. in B. I.

	Top.	Bottom.
Pittsburgh Coal	735	740
Big Injun Sand (oil and gas, 2069')	2049	2253
Stray Sand	2836	
Gordon Sand (oil and gas, 2853'; big pay, 2860')	2847	
Total depth		2861

WET-319-A(?)