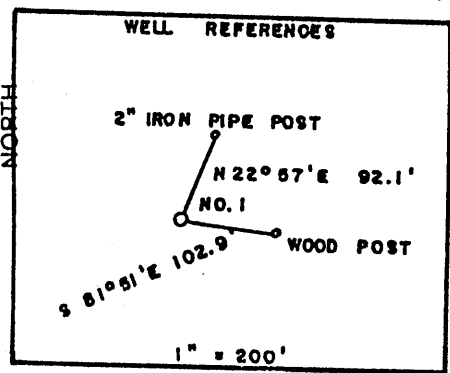
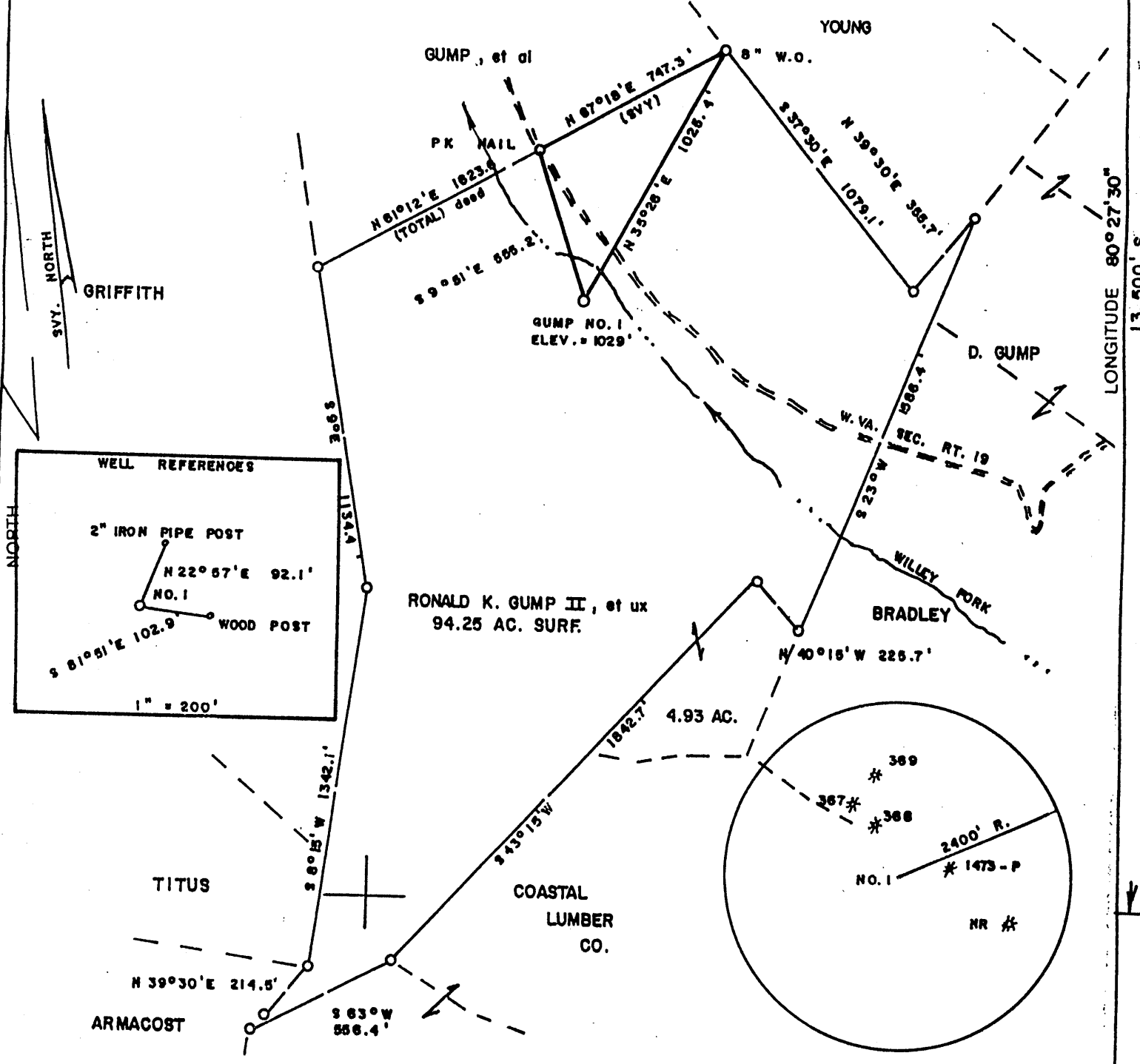
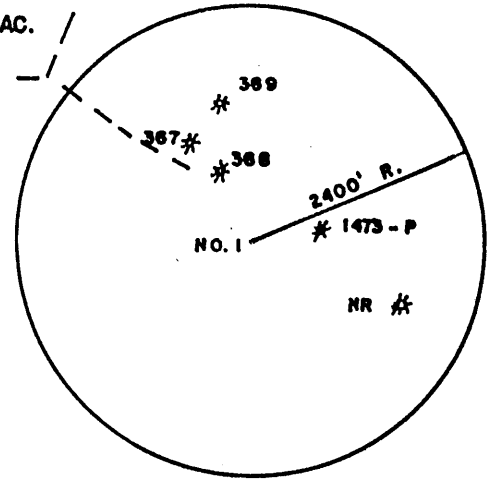


**GUMP LEASE 94.25 AC.**

10,500' W  
LATITUDE 39°37'30"



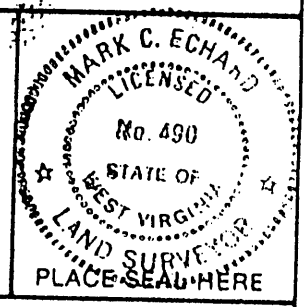
RONALD K. GUMP II, et ux  
94.25 AC. SURF.



(+) DENOTES LOCATION/OF WELL ON UNITED STATES TOPOGRAPHIC MAPS

FILE NO. \_\_\_\_\_  
DRAWING NO. \_\_\_\_\_  
SCALE 1" = 500'  
MINIMUM DEGREE OF ACCURACY 1/200  
PROVEN SOURCE OF ELEVATION BM WEST of LEASE  
ELEV. = 951'

I THE UNDERSIGNED, HEREBY CERTIFY THAT THIS PLAT IS CORRECT TO THE BEST OF MY KNOWLEDGE AND BELIEF AND SHOWS ALL THE INFORMATION REQUIRED BY LAW AND THE REGULATIONS ISSUED AND PRESCRIBED BY THE DEPARTMENT OF ENERGY.  
(SIGNED) Mark C. Echard  
R.P.E. \_\_\_\_\_ L.L.S. 490



STATE OF WEST VIRGINIA  
Division of Environmental Protection  
OFFICE OF OIL AND GAS

DATE JUNE 9, 2003  
OPERATOR'S WELL NO. GUMP NO. 1  
API WELL NO. 47-103-01966  
STATE COUNTY PERMIT

WELL TYPE: OIL  GAS  LIQUID INJECTION  WASTE DISPOSAL   
(IF "GAS,") PRODUCTION  STORAGE  DEEP  SHALLOW

LOCATION: ELEVATION 1029' WATER SHED WILLEY FORK  
DISTRICT GRANT COUNTY WETZEL  
QUADRANGLE GLOVER GAP 7.5'

SURFACE OWNER RONALD K. GUMP II, et ux ACREAGE 94.25  
OIL & GAS ROYALTY OWNER RONALD K. GUMP II, et ux et al LEASE ACREAGE 94.25  
LEASE NO. \_\_\_\_\_

PROPOSED WORK: DRILL  CONVERT  DRILL DEEPER  REDRILL  FRACTURE OR STIMULATE  PLUG OFF OLD FORMATION  PERFORATE NEW FORMATION  OTHER PHYSICAL CHANGE IN WELL (SPECIFY) \_\_\_\_\_

PLUG AND ABANDON  CLEAN OUT AND REPLUG   
TARGET FORMATION SPEECHLEY ESTIMATED DEPTH 3900'  
WELL OPERATOR D.A.C. DESIGNATED AGENT KENNETH MASON  
ADDRESS P.O. BOX 99 ADDRESS P.O. BOX 99  
ALMA, WV 26320 ALMA, WV 26320

COUNTY NAME WETZEL  
PERMIT 1966

State of West Virginia  
Department of Environmental Protection  
Office of Oil and Gas

Well Operator's Report of Well Work

Farm name: Gump

Operator Well No.: Gump #1

LOCATION: Elevation: 1,029'

Quadrangle: Glover Gap

District: Grant

County: Wetzel

Latitude: 13,500 Feet South of

39 Deg. 37 Min. 30 Sec.

Longitude 10,500 Feet West of

80 Deg. 27 Min. 30 Sec.

Company:

Drilling Appalachian Corporation	Casing & Tubing	Used in drilling	Left in well	Cement fill up Cu. Ft.
<b>Address:</b>				
<b>P.O. Box 99 Alma WV 26320</b>	9 5/8	230	215	68 sks
<b>Agent: Kenneth Mason</b>				
<b>Inspector: Mike Underwood</b>	6 5/8	1350	1339	100 sks
<b>Date Permit Issued: 06/19/2003</b>				
<b>Date Well Work Commenced: 08/20/03</b>	4 1/2	3289	3163	170 sks
<b>Date Well Work Completed: 08/26/03</b>				
<b>Verbal Plugging:</b>				
<b>Date Permission granted on:</b>				
<b>Rotary X Cable Rig</b>				
<b>Total Depth (feet): 3289</b>				
<b>Fresh Water Depth (ft.): 1,580'</b>				
<b>Salt Water Depth (ft.): N/A</b>				
<b>Is coal being mined in area (N/Y)? N</b>				
<b>Coal Depths (ft.): N/A</b>				

OPEN FLOW DATA

Producing formation Gordon Pay zone depth (ft) 2830-2910  
 Gas: Initial open N/S MCF/d Oil: Initial open flow \_\_\_\_\_ Bbl/d  
 Final open flow 800 MCF/d Final open flow \_\_\_\_\_ Bbl/d  
 Time of open flow between initial and final tests \_\_\_\_\_ Hours  
 Static rock Pressure 475# psig (surface pressure) after 48 Hours

Second producing formation Big Injun Pay zone depth (ft) 1950-1970  
 Gas: Initial open flow \* \_\_\_\_\_ MCF/d Oil: Initial open flow \_\_\_\_\_ Bbl/d  
 Final open flow \* \_\_\_\_\_ MCF/d Final open flow \_\_\_\_\_ Bbl/d  
 Time of open flow between initial and final tests \_\_\_\_\_ Hours  
 Static rock Pressure \_\_\_\_\_ psig (surface pressure) after \_\_\_\_\_ Hours

\* = commingled zones

NOTE: ON BACK OF THIS FORM PUT THE FOLLOWING: 1). DETAILS OF PERFORATED INTERVALS, FRACTURING OR STIMULATING, PHYSICAL CHANGE, ETC. 2). THE WELL LOG WHICH IS A SYSTEMATIC DETAILED GEOLOGICAL RECORD OF ALL FORMATIONS,

Signed: Kenneth R. Mason  
 By: \_\_\_\_\_

NOV 14 2003

WET 1966

Gump #1  
09-02-03

Stage #1	perfs	sand	avg rate	isip
Gordon 4 <sup>th</sup>	2840-2910 15 holes	200 sks	28 bpm	2445#
Stage #2 Big Injun	1954-1980 15 holes	200 sks	28 bpm	2642#

Drillers Log

Sh	0	15	
Sd/Sh	15	310	
Sd	310	330	
Sd/Sh	330	571	
Sd	571	576	
Sd/Sh	576	990	1 strm 1580'
RR	990	1100	
Sd/Sh	1100	1400	
RR	1400	1420	
Sd/Sh	1420	1550	
Sd	1550	1600	
Sd/Sh	1600	1804	
Lime	1804	1819	
Sh	1819	1860	
Lime	1860	1954	
Sd	1954	2608	
Sd/Sh	2608	2717	gas ck @ 2,011 = 267 mcfs
Sd	2717	2733	
Sd/Sh	2733	2860	
Sd	2860	2920	
Sd/Sh	2920	3289	
Td	3289		gas ck @ TD = 267 mcfs

Electric Log Tops

Big Lime	1875
Berea	2248
Gordon	2760