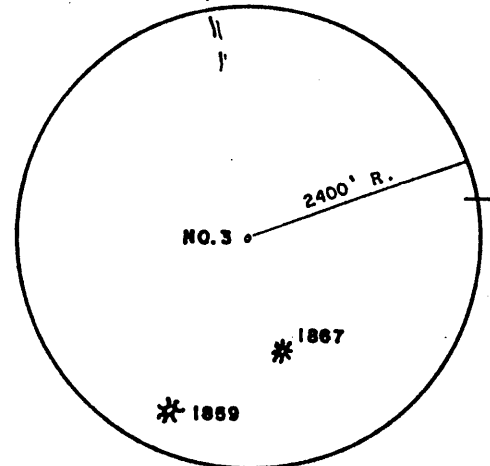
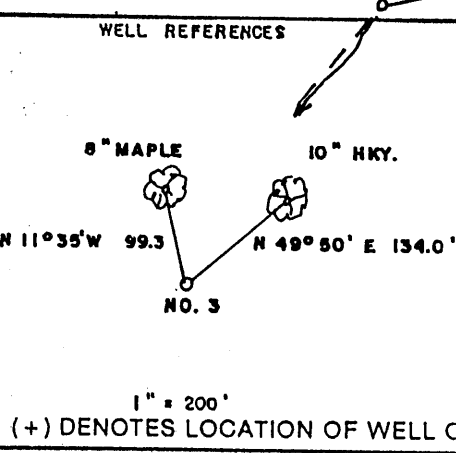
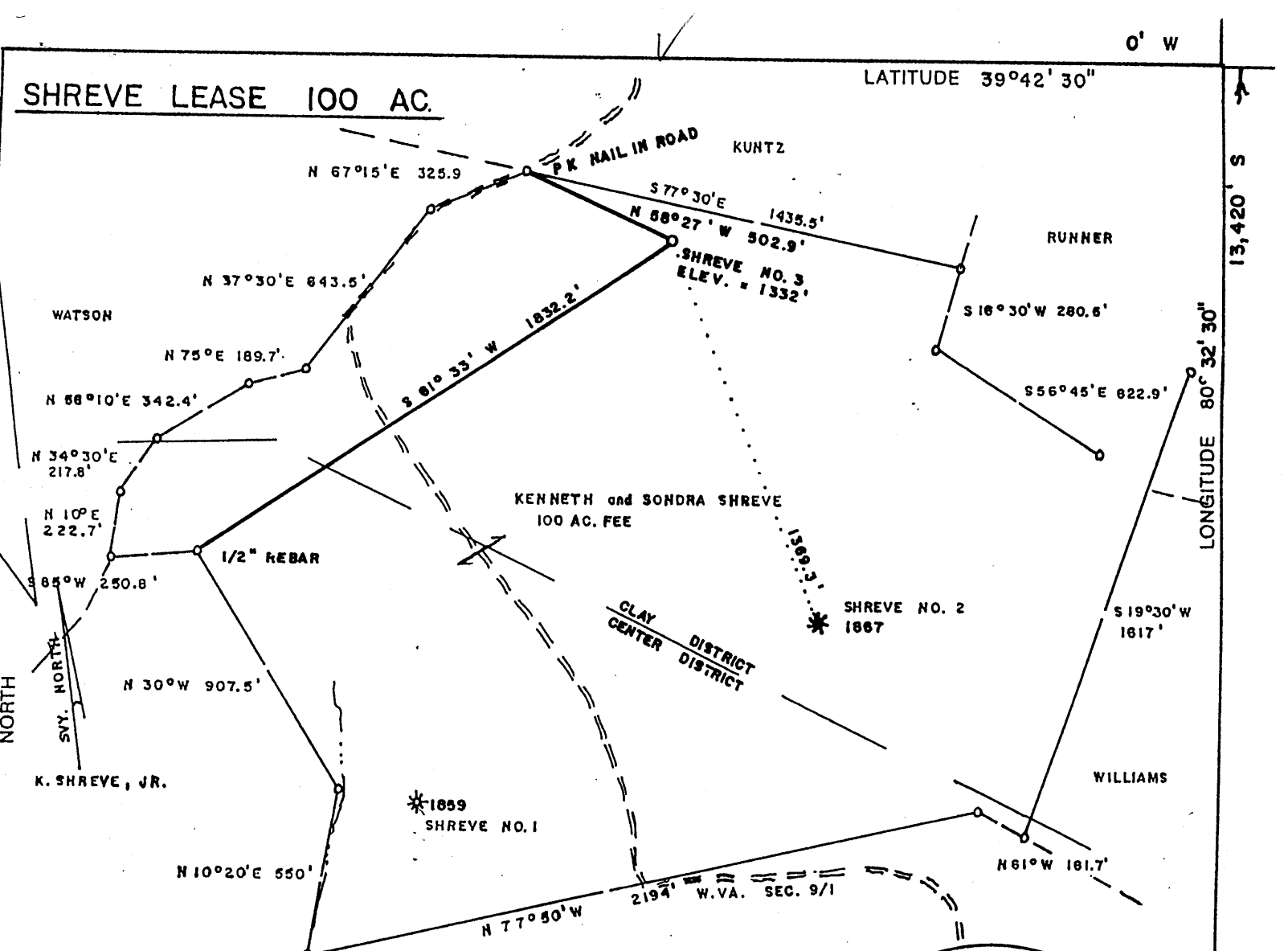


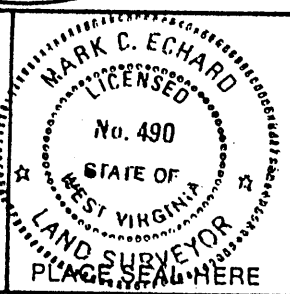
SHREVE LEASE 100 AC.

LATITUDE 39°42'30"



FILE NO. \_\_\_\_\_  
 DRAWING NO. \_\_\_\_\_  
 SCALE 1" = 500'  
 MINIMUM DEGREE OF ACCURACY 1/200  
 PROVEN SOURCE OF ELEVATION JCT. OF ROADS NW EDGE OF LEASE ELEV. = 1419'

I THE UNDERSIGNED, HEREBY CERTIFY THAT THIS PLAT IS CORRECT TO THE BEST OF MY KNOWLEDGE AND BELIEF AND SHOWS ALL THE INFORMATION REQUIRED BY LAW AND THE REGULATIONS ISSUED AND PRESCRIBED BY THE DEPARTMENT OF ENERGY.  
 (SIGNED) Mark C. Echard  
 R.P.E. \_\_\_\_\_ L.L.S. 490



STATE OF WEST VIRGINIA  
 Division of Environmental Protection  
 OFFICE OF OIL AND GAS

DATE NOVEMBER 6, 2003  
 OPERATOR'S WELL NO. SHREVE NO. 3  
 API WELL NO. \_\_\_\_\_

WELL TYPE: OIL  GAS  LIQUID INJECTION  WASTE DISPOSAL   
 (IF "GAS,") PRODUCTION  STORAGE  DEEP  SHALLOW   
 LOCATION: ELEVATION 1332' WATERSHED LISTON HOLLOW OF SUGAR RUN  
 DISTRICT CLAY COUNTY WETZEL  
 QUADRANGLE LITTLETON 7.5'

SURFACE OWNER KENNETH AND SONDR A SHREVE ACREAGE 100  
 OIL & GAS ROYALTY OWNER KENNETH AND SONDR A SHREVE LEASE ACREAGE 100  
 LEASE NO. \_\_\_\_\_

PROPOSED WORK: DRILL  CONVERT  DRILL DEEPER  REDRILL  FRACTURE OR STIMULATE  PLUG OFF OLD FORMATION  PERFORATE NEW FORMATION  OTHER PHYSICAL CHANGE IN WELL (SPECIFY) \_\_\_\_\_

PLUG AND ABANDON  CLEAN OUT AND REPLUG   
 TARGET FORMATION SPEECHLEY ESTIMATED DEPTH 3900'  
 WELL OPERATOR D.A.C. DESIGNATED AGENT KENNETH MASON  
 ADDRESS P.O. BOX 99 ADDRESS P.O. BOX 99  
ALMA, WV 26320 ALMA, WV 26320

COUNTY NAME WET  
 PERMIT 2015

6-6 KNOR FORK (43)

NOV 9 1 2003

State of West Virginia  
Department of Environmental Protection  
Office of Oil and Gas

*brs*

Well Operator's Report of Well Work

Farm name: Shreeve

Operator Well No.: Shreeve #3

LOCATION: Elevation: 1,322'

Quadrangle: Littleton 7.5'

District: Clay

County: Wetzel

Latitude: 210 Feet South of

39 Deg. 42 Min. 30 Sec.

Longitude: 0 Feet West of

80 Deg. 32 Min. 30 Sec.

Company: \_\_\_\_\_

| Drilling Appalachian Corporation            | Casing & Tubing | Used in drilling | Left in well | Cement fill up Cu. Ft. |
|---|-----------------|------------------|--------------|------------------------|
| <b>Address:</b>                             |                 |                  |              |                        |
| <b>P.O. Box 99 Alma WV 26320</b>            | 9 5/8           | 230              | 215          | 85 sks                 |
| <b>Agent: Kenneth Mason</b>                 |                 |                  |              |                        |
| <b>Inspector: Mike Underwood</b>            | 6 5/8           | 1675             | 1640         | 100 sks                |
| <b>Date Permit Issued: 11/18/2003</b>       |                 |                  |              |                        |
| <b>Date Well Work Commenced: 12/11/03</b>   | 4 1/2           | 3590             | 3563         | 170 sks                |
| <b>Date Well Work Completed: 12/16/03</b>   |                 |                  |              |                        |
| <b>Verbal Plugging:</b>                     |                 |                  |              |                        |
| <b>Date Permission granted on:</b>          |                 |                  |              |                        |
| <b>Rotary X Cable Rig</b>                   |                 |                  |              |                        |
| <b>Total Depth (feet): 3590</b>             |                 |                  |              |                        |
| <b>Fresh Water Depth (ft.): 1,220'</b>      |                 |                  |              |                        |
| <b>Salt Water Depth (ft.): N/A</b>          |                 |                  |              |                        |
| <b>Is coal being mined in area (N/Y)? N</b> |                 |                  |              |                        |
| <b>Coal Depths (ft.): N/A</b>               |                 |                  |              |                        |

OPEN FLOW DATA

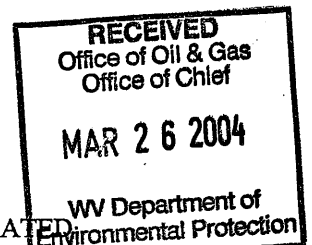
Producing formation Gordon Pay zone depth (ft) 3130-3208  
 Gas: Initial open show \_\_\_\_\_ MCF/d Oil: Initial open flow \_\_\_\_\_ Bbl/d  
 Final open flow 180 MCF/d Final open flow \_\_\_\_\_ Bbl/d  
 Time of open flow between initial and final tests \_\_\_\_\_ Hours  
 Static rock Pressure 575# psig (surface pressure) after 48 Hours

Second producing formation Big Injun Pay zone depth (ft) 2382-2450  
 Gas: Initial open flow \_\_\_\_\_ \* \_\_\_\_\_ MCF/d Oil: Initial open flow \_\_\_\_\_ Bbl/d  
 Final open flow \_\_\_\_\_ \* \_\_\_\_\_ MCF/d Final open flow \_\_\_\_\_ Bbl/d  
 Time of open flow between initial and final tests \_\_\_\_\_ Hours  
 Static rock Pressure \_\_\_\_\_ psig (surface pressure) after \_\_\_\_\_ Hours

\* = commingled zones

NOTE: ON BACK OF THIS FORM PUT THE FOLLOWING: 1). DETAILS OF PERFORATED INTERVALS, FRACTURING OR STIMULATING, PHYSICAL CHANGE, ETC. 2). THE WELL LOG WHICH IS A SYSTEMATIC DETAILED GEOLOGICAL RECORD OF ALL FORMATIONS.

Signed: Drilling Appalachian Corporation  
 By: Kenneth L. Mason



WET 2015

MAR 21 2004

Shreeve #3

| Stage #1                  | perfs                 | sand    | avg rate | isip  |
|---------------------------|-----------------------|---------|----------|-------|
| Gordon<br>4 <sup>th</sup> | 3200-3514<br>15 holes | 200 sks | 24 bpm   | 3250# |
| Stage #2<br>Big Injun     | 2378-2448<br>15 holes | 250 sks | 28 bpm   | 2150# |

Drillers Log

|       |      |      |
|-------|------|------|
| Sh    | 0    | 15   |
| Sd/Sh | 15   | 465  |
| RR    | 465  | 498  |
| Sd/Sh | 498  | 1105 |
| Sd    | 1105 | 1135 |
| Sd/Sh | 1135 | 162  |
| Coal  | 1162 | 1166 |
| Sd/Sh | 1166 | 1530 |
| RR    | 1530 | 1545 |
| Sd/Sh | 1545 | 2000 |
| Sd    | 2000 | 2450 |
| Lime  | 2295 | 2365 |
| Sd    | 2365 | 2600 |
| Sd/Sh | 2600 | 3160 |
| Sd    | 3160 | 3225 |
| Sd/Sh | 3225 | 3320 |
| Sd    | 3320 | 3355 |
| Sd/Sh | 3355 | 3590 |
| Td    | 3590 |      |

Electric Log Tops

|          |      |
|----------|------|
| Big Lime | 2296 |
| Berea    | 2720 |
| Gordon   | 3160 |