

RECEIVED
Office of Oil and Gas

DEC 03 2015

WV Department of
Environmental Protection

WW-7
8-30-06



West Virginia Department of Environmental Protection
Office of Oil and Gas

WELL LOCATION FORM: GPS

API: 47-103-02526 WELL NO.: Leasure #2
FARM NAME: Leasure, Delbert L. & Ruth
RESPONSIBLE PARTY NAME: Stone Energy Corporation
COUNTY: Wetzel DISTRICT: Green
QUADRANGLE: Porters Falls
SURFACE OWNER: Leasure, Delbert L.
ROYALTY OWNER: Leasure, Delbert L.
UTM GPS NORTHING: 4,384,035 meters
UTM GPS EASTING: 518,738 meters GPS ELEVATION: 940 feet

The Responsible Party named above has chosen to submit GPS coordinates in lieu of preparing a new well location plat for a plugging permit or assigned API number on the above well. The Office of Oil and Gas will not accept GPS coordinates that do not meet the following requirements:

- 1. Datum: NAD 1983, Zone: 17 North, Coordinate Units: meters, Altitude: height above mean sea level (MSL) – meters.
- 2. Accuracy to Datum – 3.05 meters
- 3. Data Collection Method:

Survey grade GPS : Post Processed Differential

Real-Time Differential

Mapping Grade GPS : Post Processed Differential

Real-Time Differential

- 4. Letter size copy of the topography map showing the well location.

I the undersigned, hereby certify this data is correct to the best of my knowledge and belief and shows all the information required by law and the regulations issued and prescribed by the Office of Oil and Gas.

Guy Zoff
Signature

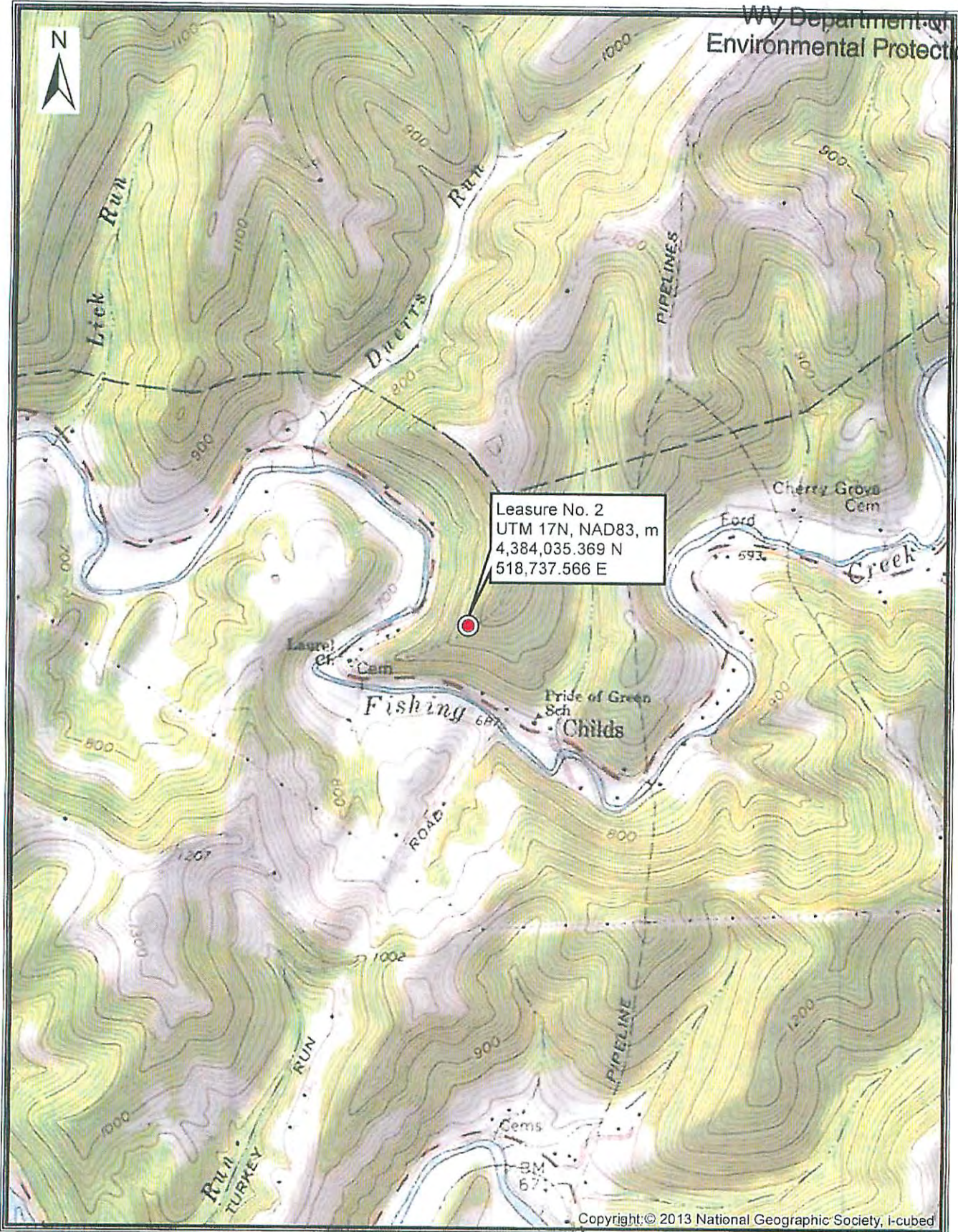
Drilling Engineer
Title

12/1/2015
Date

Leasure No. 2, API # 47-103-02526
Green District, Wetzel County, West Virginia

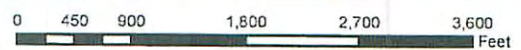
DEC 03 2015

WV Department of
Environmental Protection



Copyright © 2013 National Geographic Society, i-cubed

STONE ENERGY Stone Energy Corporation
1300 Fort Pierpont Drive, Suite 201
Morgantown, WV 26508
(304) 225-1600



Date: 12/2/2015

01/01/2016