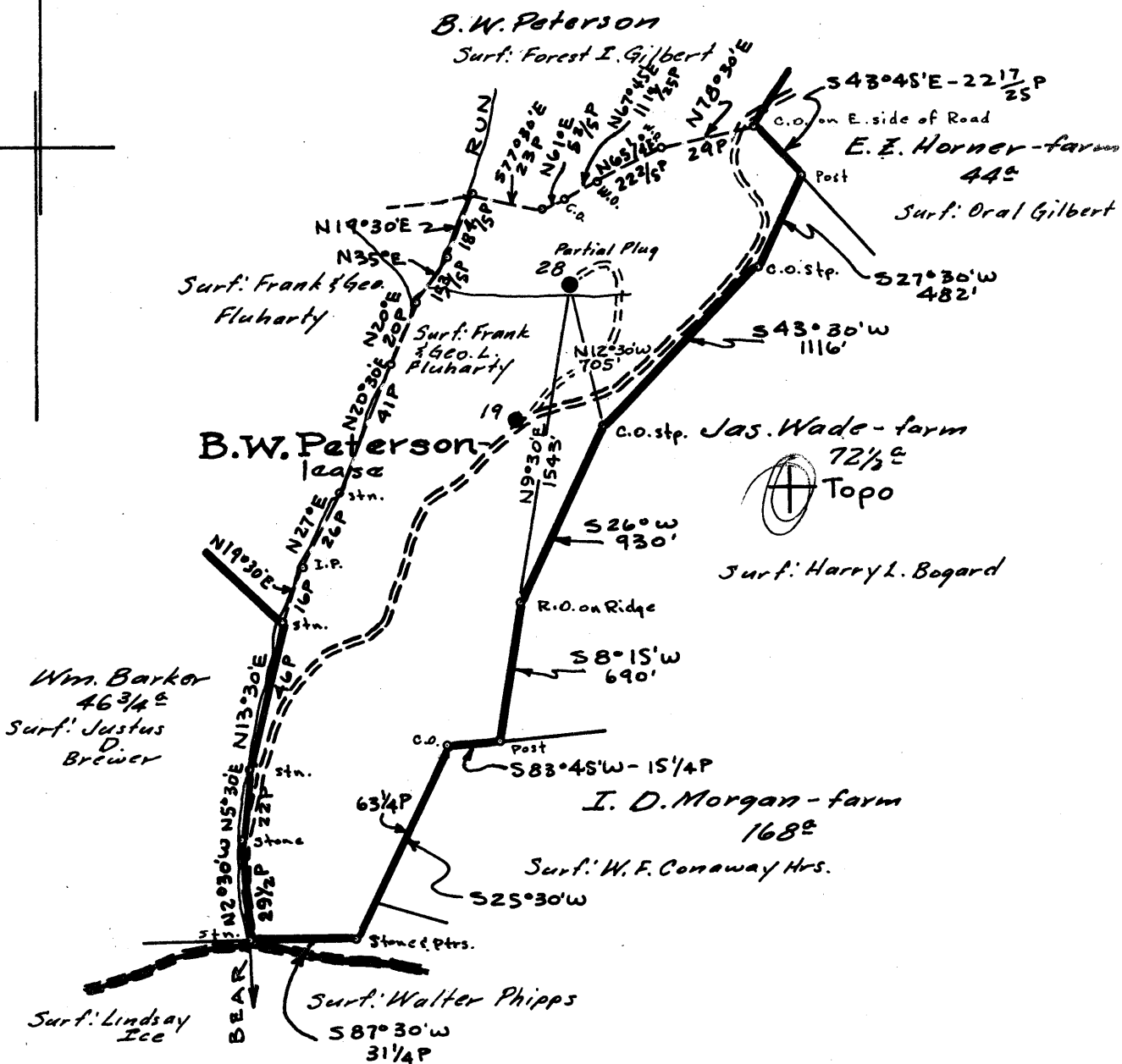
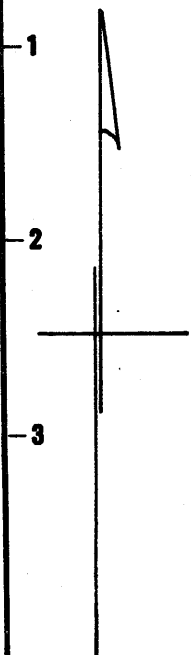




Latitude  $39^{\circ} 35'$

Longitude  $80^{\circ} 30'$



Surf: Frank & Geo. Fluharty, Smithfield, W.Va.

Coal: Benj. G. Reeder, Trustee  
170 Chancery Row  
Morgantown, W.Va.

New Location ..   
Drill Deeper .....   
Abandonment.....  Partial

SEP 25 1962

MAP N59 N5 E5

214 W  
Y. S. J.

Company SOUTH PENN OIL CO.

Address PARKERSBURG, W.Va.

Farm B.W. Peterson

Tract 84# of 4248.17# Lease No. 10052

Well (Farm) No. 28 Serial No. \_\_\_\_\_

Elevation (Spirit Level) 1088.96 cas. hd

Quadrangle LITTLETON

County WETZEL District GRANT

Engineer A.C. Nibert

Engineer's Registration No. 2534

File No. 577 Drawing No. \_\_\_\_\_

Date Sept. 6, 1962 Scale 1" = 800'

STATE OF WEST VIRGINIA  
DEPARTMENT OF MINES  
OIL AND GAS DIVISION  
CHARLESTON

WELL LOCATION MAP

FILE NO. WET-1150-A

+ Denotes location of well on United States Topographic Maps, scale 1 to 62,500, latitude and longitude lines being represented by border lines as shown.

- Denotes one inch spaces on border line of original tracing.