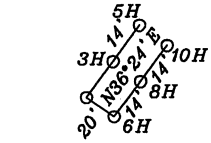
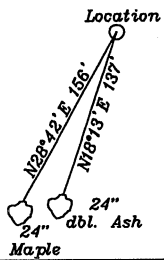


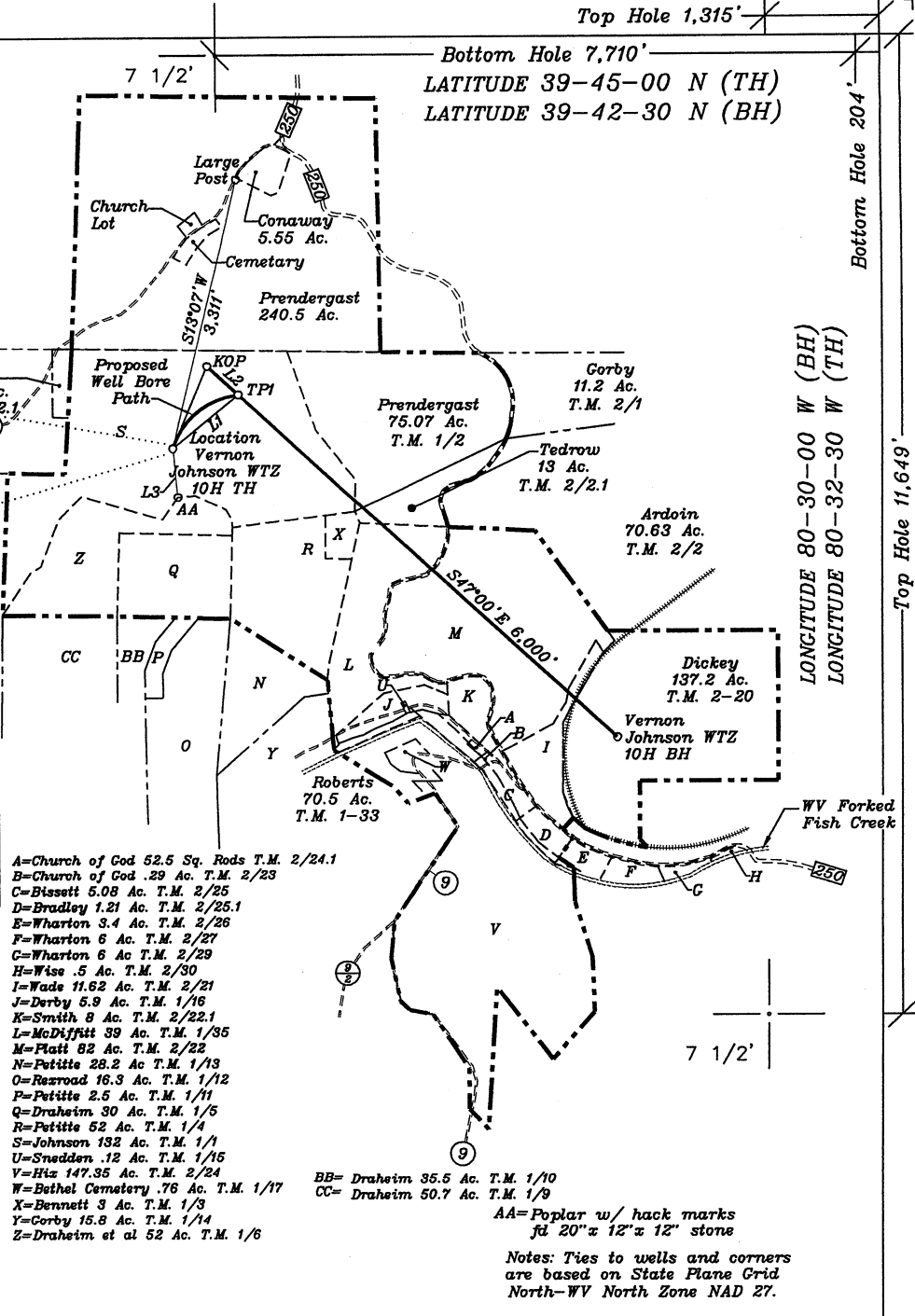
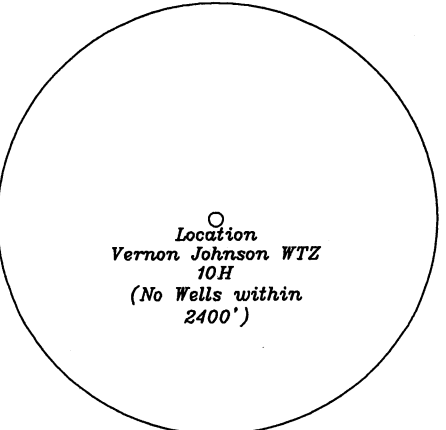
References



NTS.

NUMBER	DIRECTION	DISTANCE
L1	N50°13' E	994'
L2	S47°00' E	500'
L3	N05°59' W	583'

<b>Top Hole</b> NAD 27-39.717977 N, 80.545860 W State Plane NAD 27-445327.7 N. 1705802.9 E
<b>TPI</b> NAD 27-39.719747 N, 80.543171 W State Plane NAD 27-445964 N. 1706567 E
<b>KOP</b> NAD 27-39.720672 N, 80.544485 W State Plane NAD 27-446305 N. 1706201 E
<b>Bottom Hole</b> NAD 27-39.708652 N, 80.527405 W State Plane NAD 27-441872 N. 1710955 E



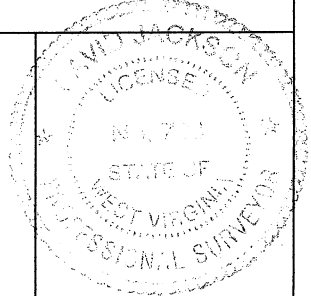
- A=Church of God 52.5 Sq. Rods T.M. 2/24.1
- B=Church of God .29 Ac. T.M. 2/23
- C=Bissett 5.08 Ac. T.M. 2/25
- D=Bradley 1.21 Ac. T.M. 2/25.1
- E=Wharton 3.4 Ac. T.M. 2/26
- F=Wharton 6 Ac. T.M. 2/27
- G=Wharton 6 Ac. T.M. 2/29
- H=Wise .5 Ac. T.M. 2/30
- I=Wade 11.62 Ac. T.M. 2/21
- J=Derby 5.9 Ac. T.M. 1/16
- K=Smith 8 Ac. T.M. 2/22.1
- L=McDuffitt 39 Ac. T.M. 1/35
- M=Platt 82 Ac. T.M. 2/22
- N=Petitte 28.2 Ac. T.M. 1/13
- O=Rezroad 16.3 Ac. T.M. 1/12
- P=Petitte 2.5 Ac. T.M. 1/11
- Q=Draheim 30 Ac. T.M. 1/5
- R=Petitte 62 Ac. T.M. 1/4
- S=Johnson 132 Ac. T.M. 1/1
- U=Snadden .12 Ac. T.M. 1/15
- V=Hix 147.35 Ac. T.M. 2/24
- W=Bethel Cemetery .76 Ac. T.M. 1/17
- X=Bennett 8 Ac. T.M. 1/3
- Y=Corbey 15.8 Ac. T.M. 1/14
- Z=Draheim et al 52 Ac. T.M. 1/6
- BB= Draheim 35.5 Ac. T.M. 1/10
- CC= Draheim 50.7 Ac. T.M. 1/9

AA=Poplar w/ hack marks  
fd 20"x 12"x 12" stone  
Notes: Ties to wells and corners are based on State Plane Grid North-WV North Zone NAD 27.

(+) DENOTES LOCATION OF WELL ON UNITED STATES TOPOGRAPHIC MAPS

FILE NO. \_\_\_\_\_  
DRAWING NO. 1  
SCALE 1" = 2000'  
MINIMUM DEGREE OF ACCURACY 1 in 200  
PROVEN SOURCE OF ELEVATION GPS  
submeter unit

I THE UNDERSIGNED, HEREBY CERTIFY THAT THIS PLAT IS CORRECT TO THE BEST OF MY KNOWLEDGE AND BELIEF AND SHOWS ALL THE INFORMATION REQUIRED BY LAW AND THE REGULATIONS ISSUED AND PRESCRIBED BY THE DEPARTMENT OF ENERGY.  
(SIGNED) David L Jackson  
R.P.E. \_\_\_\_\_ L.L.S. 708



STATE OF WEST VIRGINIA  
Division of Environmental Protection  
OFFICE OF OIL AND GAS

DATE August 19, 2011  
OPERATOR'S WELL NO. Vernon Johnson WTZ 10H  
API WELL NO. \_\_\_\_\_

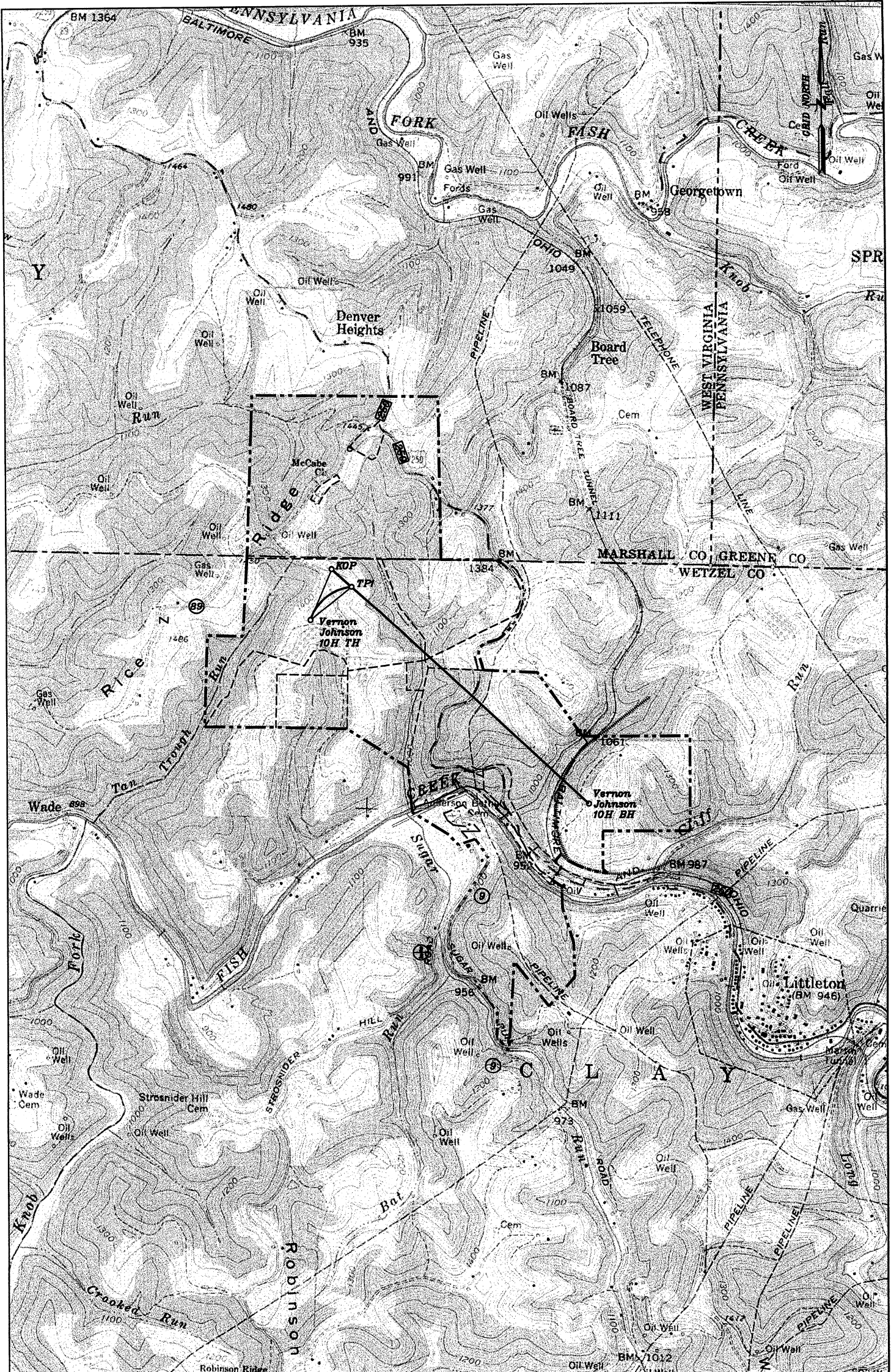
WELL TYPE: OIL \_\_\_ GAS X LIQUID INJECTION \_\_\_ WASTE DISPOSAL \_\_\_ STATE 47 COUNTY 103 PERMIT 02714H  
(IF "GAS") PRODUCTION X STORAGE \_\_\_ DEEP \_\_\_ SHALLOW X

LOCATION: ELEVATION 1438' WATER SHED WV Fork of Fish Creek & Tan Trough Run  
DISTRICT Clay COUNTY Wetzel  
QUADRANGLE Littleton 7 1/2'

SURFACE OWNER Vernon S. Johnson ACREAGE 132 ac.  
OIL & GAS ROYALTY OWNER Vernon S. Johnson LEASE ACREAGE 450.89 ac  
LEASE NO. 1-253654-001 to 008 (TM 1/15), 1-242373-001 & 002 (TM 1/2), 1-287893-001 & 002 (TM 2/2.1) 1-242979-001 & 002 (TM 2/22), TCO Ls 27882 1-242977-001 & 002, 1-292576-001, WY000221 (TM 2/21) (TM 2-20 is a 3rd party assignment from Drilling Appalachian Corp. in D.B. 94A/788)

PROPOSED WORK: DRILL X CONVERT \_\_\_ DRILL DEEPER \_\_\_ REDRILL \_\_\_ FRACTURE OR STIMULATE \_\_\_ PLUG OFF OLD FORMATION \_\_\_ PERFORATE NEW FORMATION X OTHER PHYSICAL CHANGE IN WELL (SPECIFY) \_\_\_\_\_  
PLUG AND ABANDON \_\_\_ CLEAN OUT AND REPLUG \_\_\_  
TARGET FORMATION Marcellus ESTIMATED DEPTH 7675'+ Horizontal leg  
WELL OPERATOR Chesapeake Appalachia, L.L.C. DESIGNATED AGENT Eric B. Gillespie  
ADDRESS P.O. Box 18496 Oklahoma City, OK 73154-0496 ADDRESS P.O. Box 6070 Charleston, WV 25362





Well: Vernon Johnson WTZ 10H  
 Quad: Littleton 7 1/2'  
 District: Clay  
 County: Wetzel

