

# MILLS WETZEL #5H

LATITUDE 39°32'30"

LONGITUDE 80°40'00"

LAT. 39°31'39.3"

MILLS WETZEL #5H  
STATE PLANE COORDINATES  
NORTH ZONE  
(N) 376433  
(E) 1668849

MILLS WETZEL #5H  
L & L DECIMAL  
39.52759  
80.67401

MILLS WETZEL #5H  
UTM (NAD 83)  
4375386  
528032

COASTAL LUMBER COMPANY  
60 ACRES±  
MAP 21  
PARCEL 14

STONE  
N 76° W  
2012'

MILLS WETZEL #5H

MILLS WETZEL #3H  
(47-103-02560)  
S 24° E  
20'

WV CONSERVATION COMMISSION  
5104.5 ACRES±  
MAP 21  
PARCEL 3

MILLS WETZEL #5H  
LANDING POINT  
STATE PLANE COORDINATES  
NORTH ZONE  
(N) 375161  
(E) 1668034

MILLS WETZEL #5H  
LANDING POINT

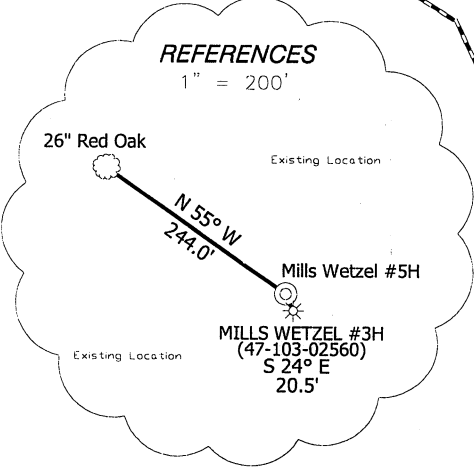
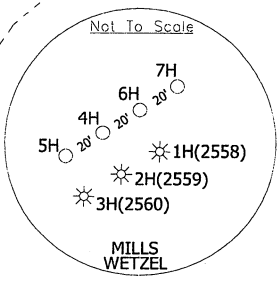
MILLS WETZEL #5H  
LANDING POINT  
L & L DECIMAL  
39.52407  
80.67684

MILLS WETZEL #5H  
LANDING POINT  
UTM (NAD 83)  
4374994  
527790

MILLS WETZEL #5H  
BOTTOM HOLE  
UTM (NAD 83)  
4374000  
528474

MILLS WETZEL #5H  
BOTTOM HOLE  
STATE PLANE COORDINATES  
NORTH ZONE  
(N) 371859  
(E) 1670222

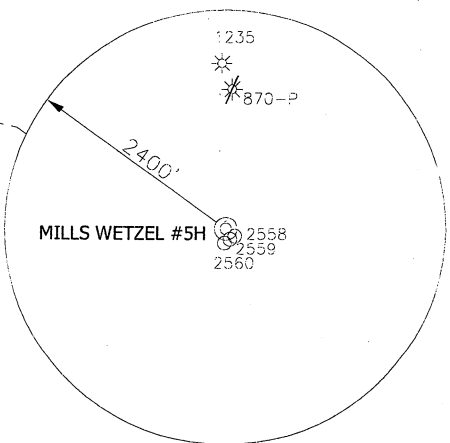
MILLS WETZEL #5H  
BOTTOM HOLE  
L & L DECIMAL  
39.51508  
80.66894



MILLS WETZEL #5H  
BOTTOM HOLE

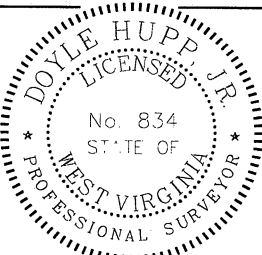
### NOTES ON SURVEY

TIES TO WELLS AND CORNERS ARE BASED ON STATE PLANE GRID NORTH WV NORTH ZONE NAD '27.  
TIES TO REFERENCES ARE BASED ON MAGNETIC NORTH 07-25-11.  
LEASE BOUNDARY SHOWN HEREON TAKEN FROM A TITLE EXAMINATION BY PATRICK N. RADCLIFF DATED NOVEMBER 7, 2009 AND INFORMATION PROVIDED BY STONE ENERGY CORPORATION.  
SURFACE OWNER AND ADJOINER INFORMATION TAKEN FROM THE ASSESSOR AND COUNTY CLERK RECORDS OF WETZEL COUNTY IN MARCH, 2011 AND INFORMATION PROVIDED BY STONE ENERGY CORPORATION.  
WELL LAT./LONG. ESTABLISHED BY SG-GPS. PLAT ORIGINAL DATE OF AUGUST 5, 2011.



I, THE UNDERSIGNED, HEREBY CERTIFY THAT THIS PLAT IS CORRECT TO THE BEST OF MY KNOWLEDGE AND BELIEF AND SHOWS ALL THE INFORMATION REQUIRED BY LAW AND THE REGULATIONS ISSUED AND PRESCRIBED BY THE DIVISION OF ENVIRONMENTAL PROTECTION.

P.S. 834  
*Doyle Hupp Jr.*  
DOYLE HUPP SURVEYING & MAPPING  
P.O. Box 647 Grantsville, WV 26147  
(304) 354-7035 EMAIL: hupp@trantier.net



(+) DENOTES LOCATION OF WELL ON UNITED STATES TOPOGRAPHIC MAPS.  
DATE OCTOBER 7, 20 11  
OPERATORS WELL NO. MILLS WETZEL #5H  
API WELL NO. 47-103-02721 H  
STATE COUNTY PERMIT

MINIMUM DEGREE OF ACCURACY 1/2500 FILE NO. W1719 (BK57-48)  
PROVEN SOURCE OF ELEVATION SG-GPS (OPUS) SCALE 1" = 1000'

STATE OF WEST VIRGINIA  
DIVISION OF ENVIRONMENTAL PROTECTION  
OFFICE OF OIL AND GAS



WELL TYPE: OIL  GAS  LIQUID INJECTION  WASTE DISPOSAL  IF "GAS" PRODUCTION  STORAGE  DEEP  SHALLOW

LOCATION: ELEVATION 1331' WATERSHED TRIBUTARY OF WYATT RUN  
DISTRICT GRANT COUNTY WETZEL QUADRANGLE PINE GROVE 7.5'

SURFACE OWNER WEST VIRGINIA CONSERVATION COMMISSION ACREAGE 5104.5 ±  
ROYALTY OWNER MILLS WETZEL LAND Inc. LEASE ACREAGE 5104.5±

PROPOSED WORK: DRILL  CONVERT  DRILL DEEPER  REDRILL  FRACTURE OR STIMULATE  PLUG OFF OLD FORMATION  PERFORATE NEW FORMATION  PLUG AND ABANDON  CLEAN OUT AND REPLUG  OTHER

PHYSICAL CHANGE IN WELL (SPECIFY) TARGET FORMATION MARCELLUS  
ESTIMATED DEPTH 7,350' TVD 13,040' MD

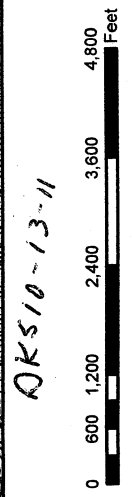
WELL OPERATOR STONE ENERGY CORPORATION DESIGNATED AGENT TIM MCGREGOR  
ADDRESS P.O. BOX 52807 LAFAYETTE, LA 70508 ADDRESS 6000 HAMPTON CENTER SUITE B MORGANTOWN WV 26505

COUNTY NAME PERMIT

Well Site Safety Plan  
Location for Proposed Mills-Wetzel #4H, 5H, 6H, and 7H wells



Base map: Pine Grove, WV USGS 7.5' topographic map  
Date Printed: 10/5/2011



OKS10-13-11

Stone Energy Corporation  
6000 Hampton Center, Suite B  
Morgantown, WV 26505  
(304) 225-1600  
DMJ  
10-17-11

