

# NORTH HENDERSON UNIT 3H

**WELL 3H STATE PLANE COORDINATES (NORTH ZONE NAD 27)**  
 N. 436,483  
 E. 1,696,624

**WELL 3H (NAD'27)**  
 LAT=(N) 39°41'36.2"  
 LONG=(W) 80°34'41.2"

**WE 3H (NAD'27)**  
 LAT=(N) 39,69340  
 LONG=(W) 80.57811

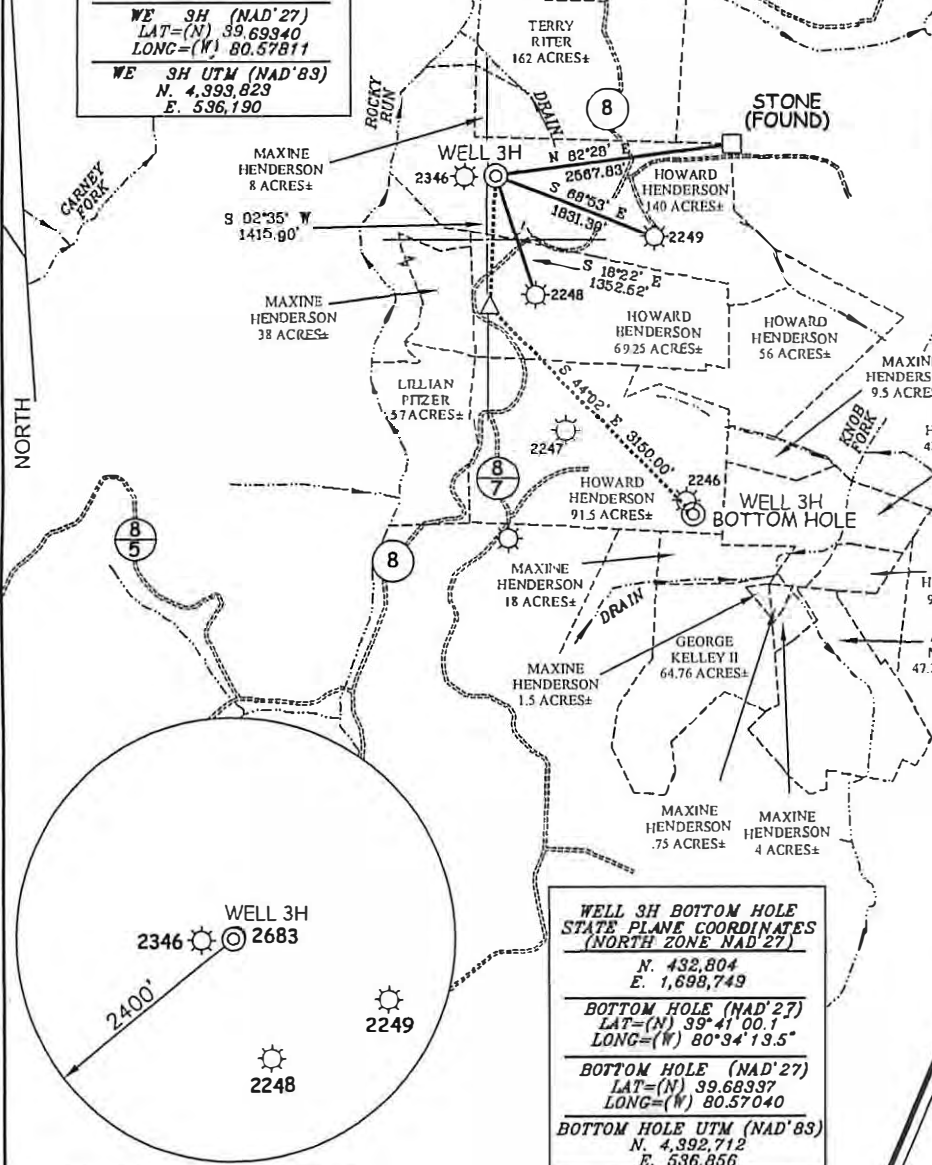
**WE 3H UTM (NAD'83)**  
 N. 4,393,823  
 E. 536,190

**WELL 3H PENETRATION POINT STATE PLANE COORDINATES (NORTH ZONE NAD 27)**  
 N. 435,069  
 E. 1,696,560

**PENETRATION POINT (NAD'27)**  
 LAT=(N) 39°41'22.2"  
 LONG=(W) 80°34'41.8"

**PENETRATION POINT (NAD'27)**  
 LAT=(N) 39,68951  
 LONG=(W) 80.57828

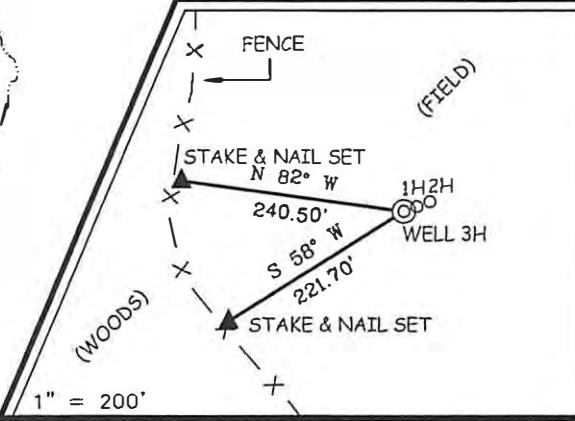
**PENETRATION POINT UTM (NAD'83)**  
 N. 4,393,391  
 E. 536,177



### NOTES ON SURVEY

1. TIES TO WELLS, REFERENCES, AND CORNERS ARE BASED ON GRID NORTH FOR THE WV STATE PLANE COORDINATE SYSTEM NORTH ZONE NAD '27.
2. TRACT BOUNDARY SHOWN HEREON TAKEN FROM DEED BOOK 77 PAGE 189 AND ADJOINING DEEDS.
3. SURFACE OWNER AND ADJOINER INFORMATION TAKEN FROM THE ASSESSOR AND COUNTY CLERK RECORDS OF WETZEL COUNTY IN JULY, 2010.
4. WELL COORDINATES ESTABLISHED BY DGPS(SURVEY GRADE).

### REFERENCES



**WELL 3H BOTTOM HOLE STATE PLANE COORDINATES (NORTH ZONE NAD 27)**  
 N. 432,804  
 E. 1,698,749

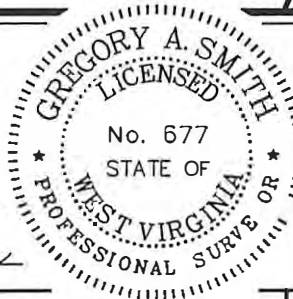
**BOTTOM HOLE (NAD'27)**  
 LAT=(N) 39°41'00.1"  
 LONG=(W) 80°34'13.5"

**BOTTOM HOLE (NAD'27)**  
 LAT=(N) 39,68937  
 LONG=(W) 80.57040

**BOTTOM HOLE UTM (NAD'83)**  
 N. 4,392,712  
 E. 536,856



I THE UNDERSIGNED, HEREBY CERTIFY THAT THIS PLAT IS CORRECT TO THE BEST OF MY KNOWLEDGE AND BELIEF AND SHOWS ALL THE INFORMATION REQUIRED BY LAW AND THE REGULATIONS ISSUED AND PRESCRIBED BY THE DIVISION OF ENVIRONMENTAL PROTECTION.



(+) DENOTES LOCATION OF WELL ON UNITED STATES TOPOGRAPHIC MAPS.  
 DATE AUGUST 29, 20 11

OPERATORS WELL NO. NORTH HENDERSON UNIT 3H  
 API WELL NO. 47-103-02750 H  
 STATE COUNTY PERMIT

MINIMUM DEGREE OF ACCURACY 1 / 200 FILE NO. 7578P3HR(343-49)  
 PROVEN SOURCE OF ELEVATION DGPS (SUBMETER MAPPING GRADE) SCALE 1" = 2,000'

STATE OF WEST VIRGINIA  
 DIVISION OF ENVIRONMENTAL PROTECTION  
 OFFICE OF OIL AND GAS

WELL TYPE: OIL  GAS  LIQUID INJECTION  WASTE DISPOSAL  IF "GAS" PRODUCTIVE  SHALLOW

LOCATION: ELEVATION 1356' WATERSHED ROCKY RUN  
 DISTRICT CENTER COUNTY WETZEL RANGE LITTLETON 7.5'

SURFACE OWNER HOWARD HENDERSON ACREAGE 140±

ROYALTY OWNER MAXINE HENDERSON ET AL LEASE ACREAGE 140, 69.25, 91.5, 42.65, 18, 64.76, 1.5, .75, 4, & 47.25±

PROPOSED WORK: LEASE NO. \_\_\_\_\_  
 DRILL  CONVERT  DRILL DEEPER  REDRILL  FRACTURE OR STIMULATE  PLUG OFF OLD FORMATION   
 PERFORATE NEW FORMATION  PLUG AND ABANDON  CLEAN OUT AND REPLUG  OTHER   
 PHYSICAL CHANGE IN WELL (SPECIFY) \_\_\_\_\_ TARGET FORMATION MARCELLUS  
 ESTIMATED DEPTH 7,597' HORIZONTAL LEG \_\_\_\_\_

WELL OPERATOR GRENADIER ENERGY PARTNERS, LLC DESIGNATED AGENT SHARON BARTH-CT CORP.  
 ADDRESS 1610 WOODSTEAD COURT, SUITE 330 ADDRESS 707 VIRGINIA ST. EAST 15TH FL.  
THE WOODLANDS, TX 77380 CHARLESTON, WV 25301