

SURFACE HOLE DECIMAL LONG: 80.54569 | 1,115'
 SURVEYED LONG. 80° 32' 44.5"

LATITUDE 39° 42' 30"

**SHREVE-WATSON UNIT 2H
 K. SHREVE LEASE
 100.0 ACRES ±**

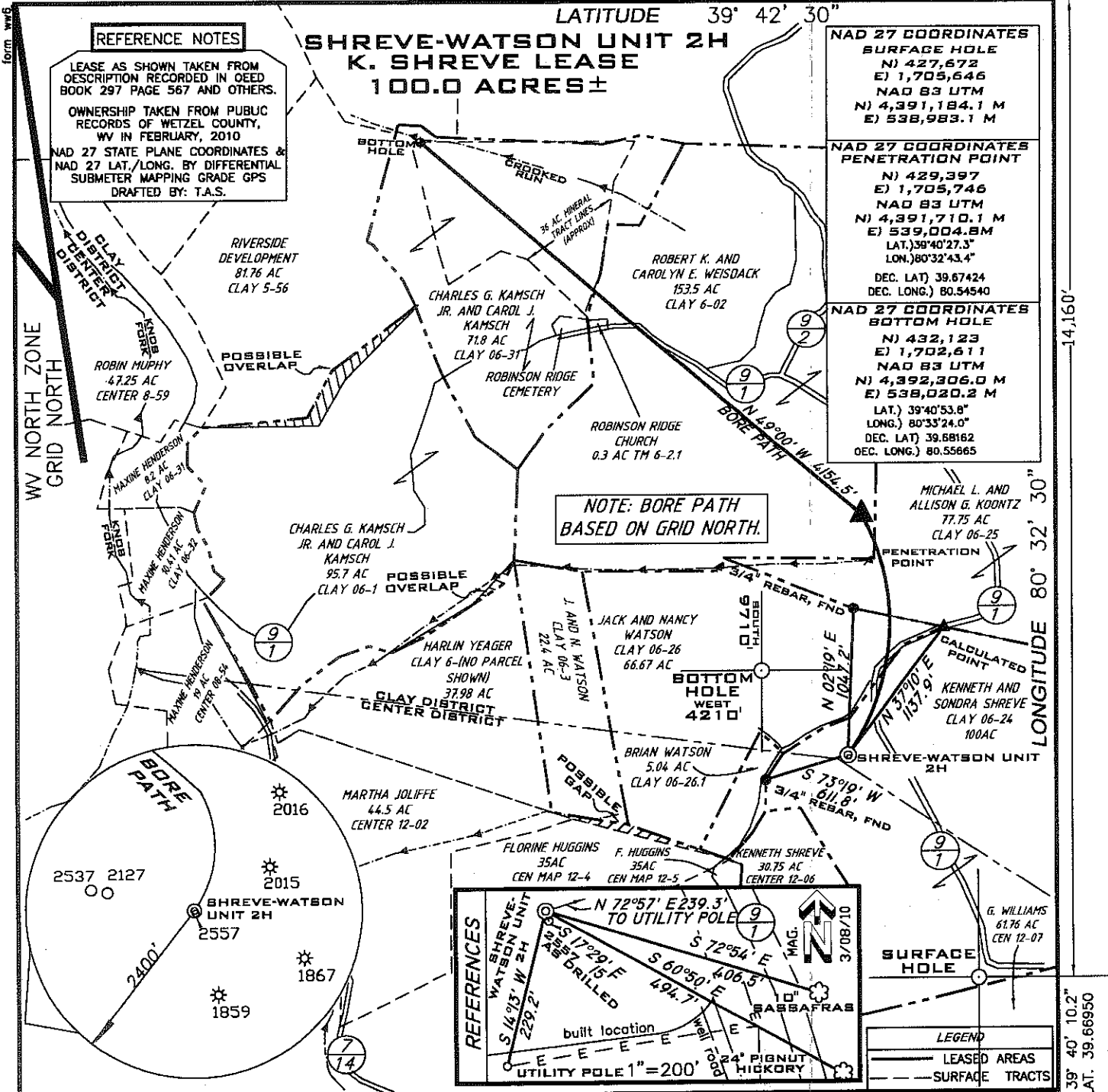
REFERENCE NOTES

LEASE AS SHOWN TAKEN FROM DESCRIPTION RECORDED IN OEDD BOOK 297 PAGE 567 AND OTHERS.
 OWNERSHIP TAKEN FROM PUBUC RECORDS OF WETZEL COUNTY, WV IN FEBRUARY, 2010
 NAD 27 STATE PLANE COORDINATES & NAD 27 LAT./LONG. BY DIFFERENTIAL SUBMETER MAPPING GRADE GPS
 DRAFTED BY: T.A.S.

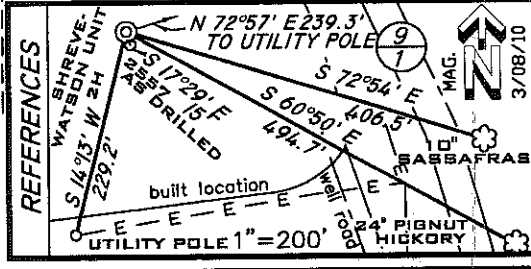
NAD 27 COORDINATES SURFACE HOLE
 N) 427,672
 E) 1,705,646
 NAD 83 UTM
 N) 4,391,184.1 M
 E) 538,983.1 M

NAD 27 COORDINATES PENETRATION POINT
 N) 429,397
 E) 1,705,746
 NAD 83 UTM
 N) 4,391,710.1 M
 E) 539,004.8M
 LAT.) 39°40'27.3"
 LONG.) 80°32'43.4"
 DEC. LAT) 39.67424
 DEC. LONG.) 80.54540

NAD 27 COORDINATES BOTTOM HOLE
 N) 432,123
 E) 1,702,611
 NAD 83 UTM
 N) 4,392,306.0 M
 E) 538,020.2 M
 LAT.) 39°40'53.8"
 LONG.) 80°33'24.0"
 DEC. LAT) 39.68162
 DEC. LONG.) 80.55665



**NOTE: BORE PATH
 BASED ON GRID NORTH.**

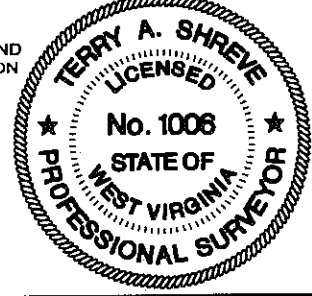


LEGEND
 — LEASED AREAS
 --- SURFACE TRACTS

FILE NUMBER G100473(WB9-51)
 DRAWING NUMBER G100473WP2H.dwg
 SCALE 1" = 1000'
 MINIMUM DEGREE OF ACCURACY 1/200
 PROVEN SOURCE OF ELEVATION SUBMETER MAPPING GRADE GPS

THE UNDERSIGNED HEREBY CERTIFY THAT THIS PLAT IS CORRECT TO THE BEST OF MY KNOWLEDGE AND BELIEF AND SHOWS ALL THE INFORMATION REQUIRED BY LAW AND THE REGULATIONS ISSUED AND PRESCRIBED BY THE DEPARTMENT OF ENVIRONMENTAL PROTECTION

P.S. 1006



**STATE OF WEST VIRGINIA
 DIVISION OF ENVIRONMENTAL PROTECTION
 OFFICE OF OIL AND GAS**

DATE: OCTOBER 26, 2011

OPERATORS WELL NO. SHREVE-WATSON
 API WELL NO. UNIT 2H
47-103-02755 H
 STATE COUNTY PERMIT

WELL TYPE: OIL GAS LIQUID INJECTION WASTE DISPOSAL
 (IF "GAS") PRODUCTION STORAGE DEEP SHALLOW
 LOCATION ELEVATION 1471' WATERSHED KNOB FORK AND LISTON HOLLOW OF SUGAR RUN
 DISTRICT CLAY COUNTY WETZEL
 QUADRANGLE LITTLETON 7.5' LEASE NUMBER

SURFACE OWNER KENNETH AND SONDR A SHREVE ACREAGE 100 ±
 OIL & GAS ROYALTY OWNER KENNETH AND SONDR A SHREVE et al LEASE ACREAGE 100, 77.95, 152.75, 36.0

PROPOSED WORK: DRILL CONVERT DRILL DEEPER REDRILL FRACTURE OR STIMULATE PLUG OFF OLD FORMATION
 PERFORATE NEW FORMATION OTHER PHYSICAL CHANGE (SPECIFY)

TARGET FORMATION MARCELLUS ESTIMATED DEPTH 7650' + Horizontal Leg

WELL OPERATOR GRENA DIER ENERGY PARTNERS, LLC. DESIGNATED AGENT SHARON BARTH - CT CORPORATION
 ADDRESS 1610 WOODSTEAD CT. SUITE 330 THE WOODLANDS, TEXAS 77380 ADDRESS 707 VIRGINIA STREET EAST 15TH FLOOR CHARLESTON, WV 25301

08/03/2012

SURFACE HOLE SURVEYED LAT. 39° 40' 10.2" DECIMAL LAT. 39.66950

Pad Site Topo Map

