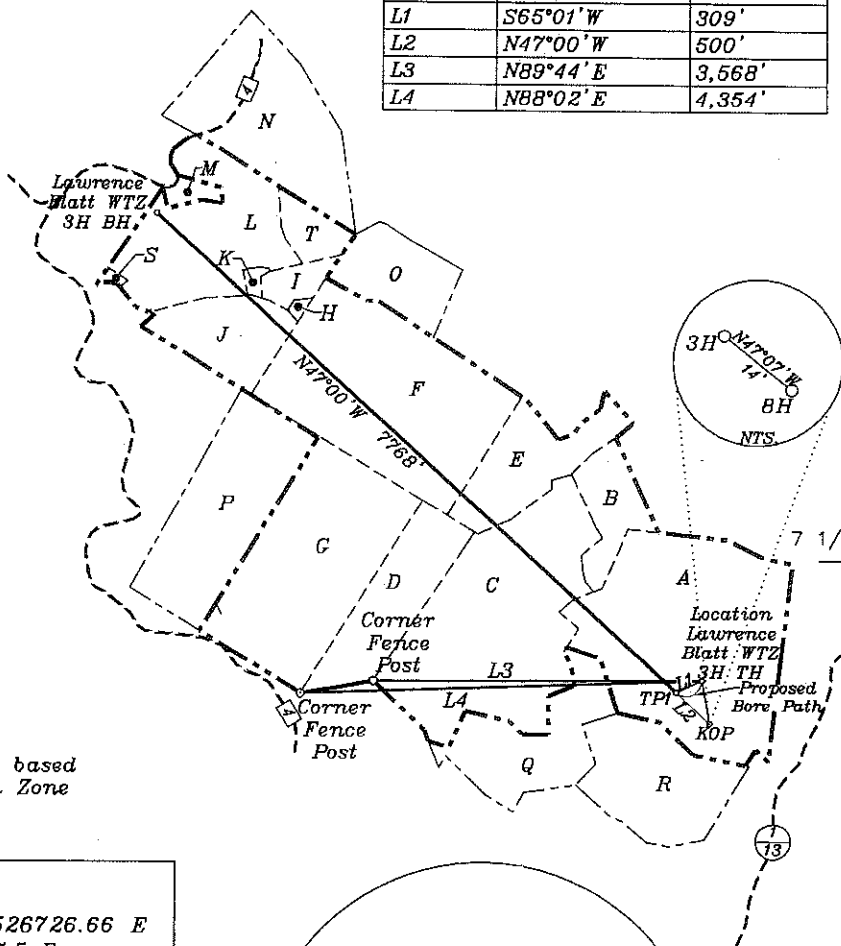


NUMBER	DIRECTION	DISTANCE
L1	S65°01'W	309'
L2	N47°00'W	500'
L3	N89°44'E	3,568'
L4	N88°02'E	4,354'



Bottom Hole 7,298'

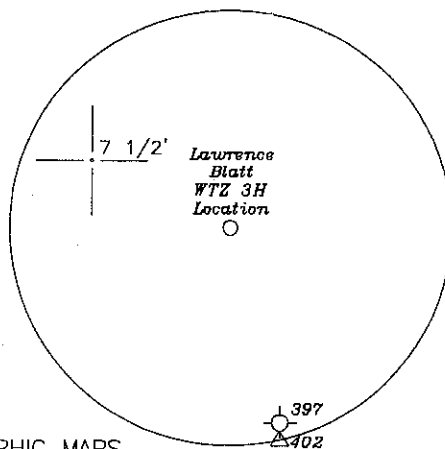
Top Hole 12,310'

LONGITUDE 80-40-00 W (TH)
LONGITUDE 80-42-30 W (BH)

- A- L. Blatt et al 108 Ac. TM.4-05
- B- M. Blair 30 Ac. TM.4-40
- C- L. Blatt et al 106.26 TM.4-4
- D- T. Blatt 16.83 Ac. TM.4-03
- E- P. Fox 25 Ac. TM.21-21
- F- T. Fox 91.21 Ac. TM.22-10
- G- P. Fox 74.75 Ac. TM.4-02
- H- Urbanek 1.0 Ac. TM.20-17.1
- I- Urbanek 5.0 Ac. TM.20-17.2
- J- Miller 24.27 Ac. TM.20-17.4
- K- C. Klug 1.336 Ac. TM.20-17.3
- L- Dennis 158 Ac. TM.20-17
- M- A. Klug 1.5 Ac. TM.20-20
- N- Kernan 49.18 Ac. TM.20-09
- O- Sapp 1.95 Ac. TM.20-16
- P- P. Fox 56 Ac. TM.4-01
- Q- A. Blatt 37 Ac. TM.4-14
- R- A. Blatt 38 Ac. TM.4-15
- S- Miller 1.0 Ac. TM.20-19
- T- Weigand 9.606 Ac. TM.20-17.5

Notes: Ties to wells and corners are based on State Plane Grid North-WV North Zone NAD 27.

<p>Top Hole</p> <p>NAD 27-39.715980 N, 80.688371 W</p> <p>UTM NAD 83 meters-4396289.87 N, 526726.66 E</p> <p>State Plane NAD 27-445099.0 N, 1665707.5 E</p>
<p>KOP</p> <p>NAD 27-39.714689 N, 80.688046 W</p> <p>UTM NAD 83 meters-4396146.6 N, 526755.0 E</p> <p>State Plane NAD 27-444627 N, 1665793 E</p>
<p>TP 1</p> <p>NAD 27-39.715611 N, 80.689362 W</p> <p>UTM NAD 83 meters-4396248.6 N, 526641.9 E</p> <p>State Plane NAD 27-444968 N, 1665427 E</p>
<p>Bottom Hole</p> <p>NAD 27-39.729947 N, 80.709809 W</p> <p>UTM NAD 83 meters-4397833.7 N, 524884.1 E</p> <p>State Plane NAD 27-450266 N, 1659746 E</p>



(+) DENOTES LOCATION OF WELL ON UNITED STATES TOPOGRAPHIC MAPS

FILE NO. _____

DRAWING NO. 1

SCALE 1" = 2000'

MINIMUM DEGREE OF ACCURACY 1 in 200

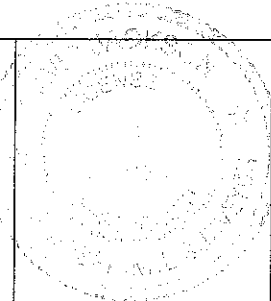
PROVEN SOURCE OF ELEVATION GPS

submeter unit

I THE UNDERSIGNED, HEREBY CERTIFY THAT THIS PLAT IS CORRECT TO THE BEST OF MY KNOWLEDGE AND BELIEF AND SHOWS ALL THE INFORMATION REQUIRED BY LAW AND THE REGULATIONS ISSUED AND PRESCRIBED BY THE DEPARTMENT OF ENERGY.

(SIGNED) David L Jackson

R.P.E. _____ L.L.S. 708



STATE OF WEST VIRGINIA
Division of Environmental Protection
OFFICE OF OIL AND GAS

DATE February 7, 2012

OPERATOR'S WELL NO. Lawrence Blatt WTZ 3H

API WELL NO. _____

WELL TYPE: OIL GAS LIQUID INJECTION WASTE DISPOSAL STATE 47 COUNTY 103 PERMIT 2768 H6A

(IF "GAS") PRODUCTION STORAGE DEEP SHALLOW

LOCATION: ELEVATION 1,282.47' WATER SHED Blake Fork

DISTRICT Proctor COUNTY Wetzel

QUADRANGLE Wileyville 7 1/2'

SURFACE OWNER Lawrence E. Blatt et al ACREAGE 108 ac.

OIL & GAS ROYALTY OWNER Lawrence E. Blatt et al LEASE ACREAGE 514.076 ac

LEASE NO. 1-288006-000 (TM. 20-17, 20-17.3), 1-282020-000 (TM.20-17.4), 1-254806-000 (TM.22-10)
1-254837-000 (TM.21-21), 1-254905-000 (TM.4-04), 1-254825-000 (TM.4-05)

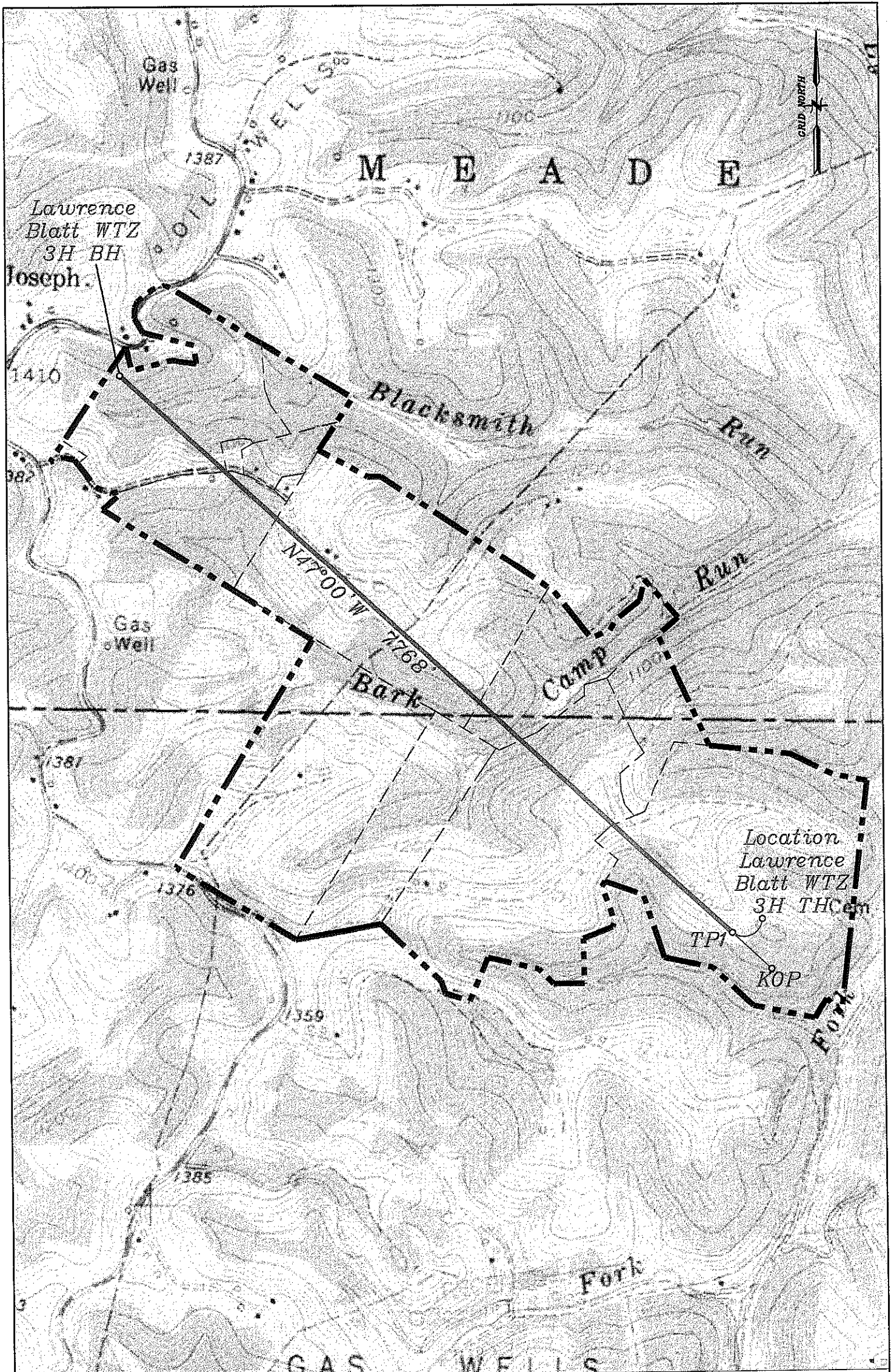
PROPOSED WORK: DRILL CONVERT DRILL DEEPER REDRILL FRACTURE OR STIMULATE PLUG OFF OLD FORMATION PERFORATE NEW FORMATION OTHER PHYSICAL CHANGE IN WELL (SPECIFY) _____

PLUG AND ABANDON CLEAN OUT AND REPLUG

TARGET FORMATION Marcellus ESTIMATED DEPTH 6965'+ Horizontal leg (TMD 14690')

WELL OPERATOR Chesapeake Appalachia, L.L.C. DESIGNATED AGENT Eric B. Gillespie

ADDRESS P.O. Box 18496 Oklahoma City, OK 73154-0496 ADDRESS P.O. Box 6070 Charleston, WV 25362



Well: Lawrence Blatt WTZ 3H
 Quad: Wileyville 7 1/2'
 District: Proctor
 County: Wetzel

