

LONG. 80°50'39.4"

3,050'

LATITUDE 39°42'30"

BOWYERS #4H (47-103-02774) REVISED

NICE, ET AL
133 ACRES ±
MAP 2
PARCEL 8

BOWYERS #4H
(47-103-02774)
REVISED
STATE PLANE
COORDINATES
NORTH ZONE
(N) 429487
(E) 1621810

BOWYERS #4H
(47-103-02774)
REVISED
L & L DECIMAL
39.67141
80.84428

BOWYERS #4H
(47-103-02774)
REVISED
UTM (NAD 83)
4391309
513371

REBAR
N 85° W
1811'

BOWYERS #4H
(47-103-02774)
REVISED
LANDING POINT

DENOON
60 ACRES ±
MAP 2
PARCEL 8.1

S 87° E
3962'

STONE

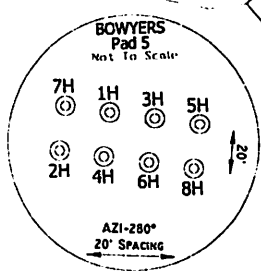
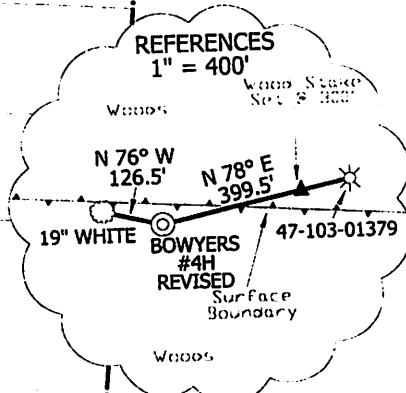
MAP 2
PARCEL 7

MAP 2
PARCEL 9

BOWYERS #4H
LANDING POINT

DENOON
72.6 ACRES ±
MAP 2
PARCEL 10

DENOON
72.6 ACRES ±
MAP 2
PARCEL 12



BOWYERS #4H
(47-103-02774)
REVISED
LANDING POINT
STATE PLANE
COORDINATES
NORTH ZONE
(N) 428694
(E) 1621117

BOWYERS #4H
(47-103-02774)
REVISED
LANDING POINT
L & L DECIMAL
39.66922
80.84599

BOWYERS #4H
(47-103-02774)
REVISED
LANDING POINT
UTM (NAD 83)
4391065
513225

MENSORE, et al
289 ACRES ±
MAP 4
PARCEL 2

NICE, ET AL
413.59 ACRES ±
MAP 5
PARCEL 1

BRIDGEMAN, et al
77 ACRES ±
MAP 4
PARCEL 7

THOMAS
85.52 ACRES ±
MAP 4
PARCEL 8

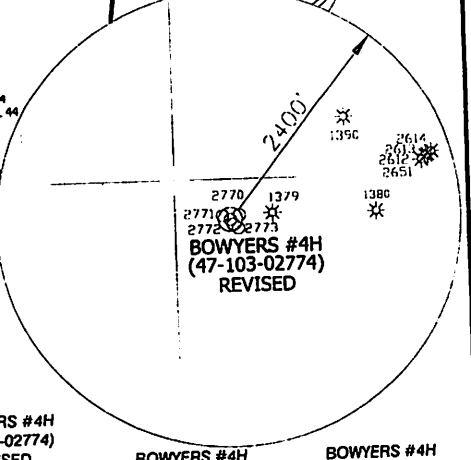
THOMAS
68.389 ACRES ±
MAP 5
PARCEL 5

NOTES ON SURVEY

THIS TO WELLS AND CORNERS ARE BASED ON STATE PLANE GRID NORTH WV NORTH ZONE NAD '27. DEED BOUNDARY SHOWN HEREON TAKEN FROM DEED BOOK 419 AT PAGE 568 AND INFORMATION PROVIDED BY STONE ENERGY. SURFACE OWNER AND ADJOINER INFORMATION TAKEN FROM THE ASSESSOR AND COUNTY CLERK RECORDS OF WETZEL COUNTY IN MARCH, 2011 AND INFORMATION PROVIDED BY STONE ENERGY CORPORATION. WELL LAT./LONG. ESTABLISHED BY SG-GPS. ORIGINAL PLAT DATE OF OCTOBER 19, 2011.

SCHEIBELHOOD
74.76 ACRES ±
MAP 4
PARCEL 17

HEINZMAN
138.24 ACRES ±
MAP 5
PARCEL 8



BOWYERS #4H
BOTTOM HOLE

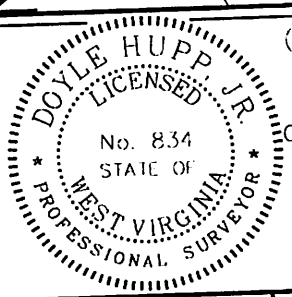
LLOYD
40.25 ACRES ±
MAP 4
PARCEL 24

BOWYERS #4H
(47-103-02774)
REVISED
BOTTOM HOLE
STATE PLANE
COORDINATES
NORTH ZONE
(N) 422568
(E) 1622672

BOWYERS #4H
(47-103-02774)
REVISED
BOTTOM HOLE
L & L DECIMAL
39.65247
80.84014

BOWYERS #4H
(47-103-02774)
REVISED
BOTTOM HOLE
UTM (NAD 83)
4389206
513730

I, THE UNDERSIGNED, HEREBY CERTIFY THAT THIS PLAT IS CORRECT TO THE BEST OF MY KNOWLEDGE AND BELIEF AND SHOWS ALL THE INFORMATION REQUIRED BY LAW AND THE REGULATIONS ISSUED AND PRESCRIBED BY THE DIVISION OF ENVIRONMENTAL PROTECTION.



(+) DENOTES LOCATION OF WELL ON UNITED STATES TOPOGRAPHIC MAPS.
DATE: AUGUST 23, 2012
OPERATORS WELL NO. BOWYERS #4H-REVISED

Doyle Hupp Jr.
HUPP Surveying & Mapping
P.O. Box 647 Grantsville, WV 26147
(304) 354-7035 EMAIL: hupp@frontiernet.net

API WELL NO. 47-103-02774-H6A
STATE COUNTY PERMIT
REVISED

MINIMUM DEGREE OF ACCURACY 1/2500
FILE NO. W2015 (BK 53 3)
PROVEN SOURCE OF ELEVATION SG-GPS(OPUS)
SCALE 1" = 1000'

STATE OF WEST VIRGINIA
DIVISION OF ENVIRONMENTAL PROTECTION
OFFICE OF OIL AND GAS

WELL TYPE: OIL GAS LIQUID WASTE IF "GAS" PRODUCTION STORAGE DEEP SHALLOW
LOCATION: ELEVATION 1,190' WATERSHED WILLIAMS RUN
DISTRICT MAGNOLIA COUNTY WETZEL QUADRANGLE NEW MARTINSVILLE 75
SURFACE OWNER JANE DENOON TRUST ACRES 60
ROYALTY OWNER DAVID BOWYERS, et al LEASE ACRES 654.48
PROPOSED WORK: DRILL CONVERT DRILL DEEPER REDRILL FRACTURE OR STIMULATE PLUG OFF OLD FORMATION
FORMATION PERFORATE NEW FORMATION PLUG AND ABANDON CLEAN OUT AND REPLUG OTHER
PHYSICAL CHANGE IN WELL (SPECIFY) TARGET FORMATION MARCHLUS
ESTIMATED DEPTH TVD 6,420' MD 13,500'

WELL OPERATOR STONE ENERGY CORPORATION DESIGNATED AGENT TIM MCCRACKEN
ADDRESS P.O. BOX 52807 LAFAYETTE, LA 70508 ADDRESS 6000 HAMPTON CENTER SUITE B MORGANTOWN WV 26609

03/01/2013