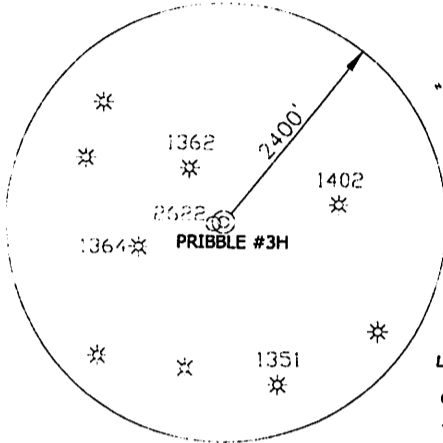


PRIBBLE #3H

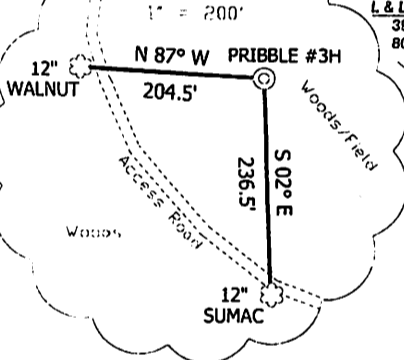
NOTES ON SURVEY

THIS TO WELLS AND CORNERS ARE BASED ON STATE PLANE GRID NORTH WV NORTH ZONE MAP 27. LEASE BOUNDARY SHOWN HEREON TAKEN FROM DEED BOOK 387 AT PAGE 74 AND INFORMATION PROVIDED BY STONE ENERGY CORPORATION. SURFACE OWNER AND ADJOINER INFORMATION TAKEN FROM THE ASSESSOR AND COUNTY CLERK RECORDS OF WETZEL COUNTY IN JUNE, 2012 AND INFORMATION PROVIDED BY STONE ENERGY CORPORATION. WELL LAT/LONG. ESTABLISHED BY SG GPS(OPUS).



PRIBBLE #3H LANDING POINT STATE PLANE COORDINATES NORTH ZONE (N) 437086 (E) 1628922

REFERENCES



PRIBBLE #3H LANDING POINT L & L DECIMAL 39.69252 80.81870

PRIBBLE #3H LANDING POINT UTM (NAD 83) 4393655 515560

CASTO 135.3 ACRES * MAP 6 PARCEL 13

47-103-01362

PRIBBLE #3H LANDING POINT

PRIBBLE #3H STATE PLANE COORDINATES NORTH ZONE (N) 436560 (E) 1628539

PRIBBLE #3H L & L DECIMAL 39.69115 80.82004

PRIBBLE #3H UTM (NAD 83) 4393499 515446

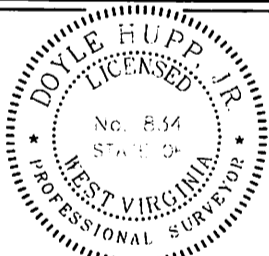
PRIBBLE #3H BOTTOM HOLE STATE PLANE COORDINATES NORTH ZONE (N) 441876 (E) 1627451

PRIBBLE #3H BOTTOM HOLE L & L DECIMAL 39.70566 80.82418

PRIBBLE #3H BOTTOM HOLE UTM (NAD 83) 4395113 515088

FANNIN 30.5 ACRES * MAP 6 PARCEL 22

HORNER 144.56 ACRES * MAP 6 PARCEL 23



(+) DENOTES LOCATION OF WELL ON UNITED STATES TOPOGRAPHIC MAPS.

DATE AUGUST 23, 2012
 OPERATORS WELL NO. PRIBBLE #3H
 AP NO. 47-103-01362
 STATE COUNTY

2835 H6A

MINIMUM DEGREE OF ACCURACY 1/2500 FILE NO. W2007 (BK 48-38)
 HORIZONTAL SOURCE SCALE 1" = 1000'
 OF ELEVATION SG-GPS (OPUS)

STATE OF WEST VIRGINIA DIVISION OF ENVIRONMENTAL PROTECTION OFFICE OF OIL AND GAS



WELL TYPE: GAS LIQUID WASTE OTHER
 LOCATION: PROCTOR DISTRICT, WETZEL COUNTY, QUADRANGLE NEA MARTINSVILLE 718
 SURFACE OWNER: RAYMOND PRIBBLE ACREAGE: 194.21
 ROYALTY OWNER: RAYMOND PRIBBLE, et al LEASE ACREAGE: 402.50
 PROPOSED WORK: CONVERSION DRILL DEEPER REPAIR RAC LIFT OR STIMULANT PLUG AND ABANDON CLEAN UP AND RE-PLUG OTHER
 PHYSICAL CHANGE IN WELL (SPECIFY): TARGET FORMATION MARCELLUS ESTIMATED DEPTH TVD 6,590' WD 12,000'

SEE OPERATOR: STONE ENERGY CORPORATION DESIGNATED AGENT: TIM MCGREGOR
 ADDRESS: P.O. BOX 52807 LAFAYETTE, LA 70508 ADDRESS: 6000 HAMPTON CENTER SUITE B MORGANTOWN WV 26505